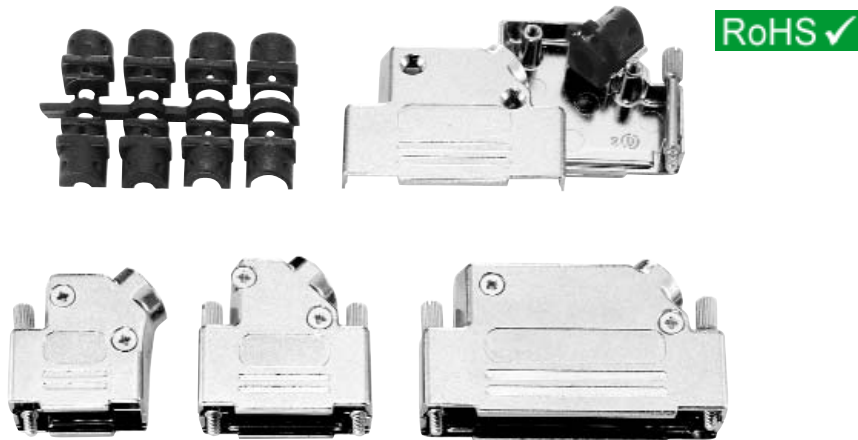


CMA 45° EXIT - METAL COVERS

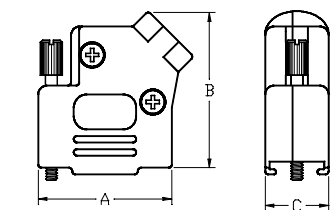


FEATURES:

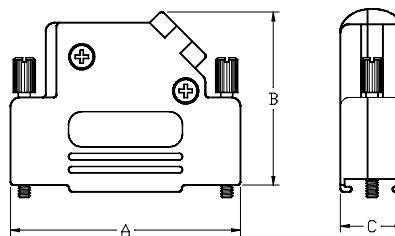
- Low Profile design allows product to be used in applications where space is at a premium.
- Lightweight durable die-cast zinc covers provide excellent shielding against EMI/RFI (up to 40 dB attenuation from 30 MHz to 1 GHz).
- Includes two-piece plastic Strain Relief System and 4-40 UNC Thumbscrews.
- Fully tapped screw holes allow for fast and easy assembly.
- Accommodates cable diameters from 0.138 in. to 0.512 in..
- Available in sizes 9, 15, 25 & 37 positions.

SPECIFICATIONS:

- Cover Material: Zinc Die-Cast.
- Cover Finish: Nickel over Copper underplate.
- Insert Material: Black Polypropylene (70 Durometer - Type D).
- Thumbscrews: Brass with Bright Zinc Finish.

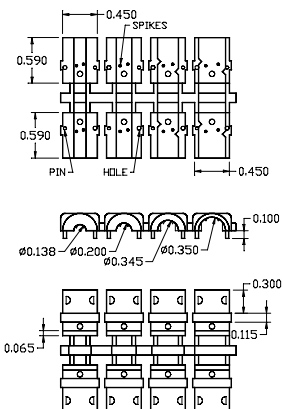


9 Position



15, 25 and 37 Positions

2 PIECE PLASTIC STRAIN RELIEF



METAL COVERS - CMA 45° EXIT SERIES - DIMENSIONS

Size	PKG	PART NUMBERS		INCHES [MM]			
		NorTech Logo	No Logo	A	B	C	D
9 Position	PKG	---	MHDE45ZK9K	1.220 [30.99]	1.430 [36.32]	0.570 [14.48]	---
15 Position	PKG	---	MHDE45ZK15K	1.560 [39.62]	1.590 [40.38]	0.570 [14.48]	1.310 [33.27]
25 Position	PKG	---	MHDE45ZK25K	2.100 [53.34]	1.590 [40.38]	0.570 [14.48]	1.850 [47.00]
37 Position	PKG	---	MHDE45ZK37K	2.740 [69.60]	1.590 [40.38]	0.570 [14.48]	2.500 [63.50]