

COM Express Module

NEW

VIA

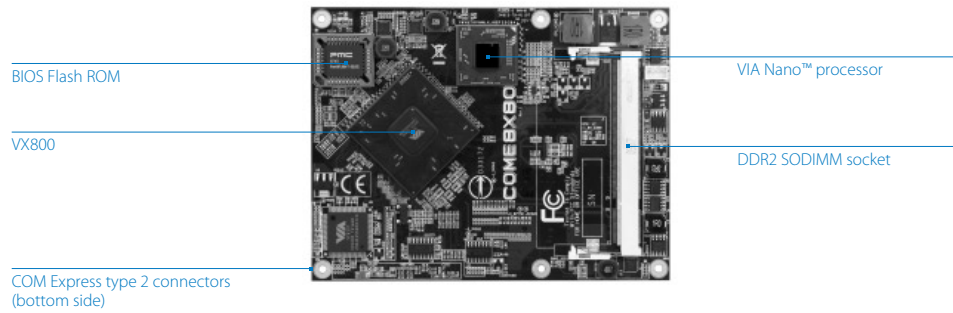
COME8X80

COM Express Module with Nano™ CPU, LVDS, USB, IDE, SATA, LAN, & PCIe

Features

- Low power VIA 64-bit Nano™ processor
- Supports one SODIMM socket for DDR2 memory (max.2GB)
- Integrated VIA Chrome9™ HC Integrated Graphics with 3D/2D and Unified Video Decoding Accelerator
- Supports one 4-lane PCIe, two 1-lane PCIe, and three PCI expansion
- Display interface in CRT, 18/24-bit dual-channel LVDS panel, and one DVP port
- Supports one 10/100 Mbps Ethernet on module
- Supports one IDE and two SATA (3 Gbps)
- Supports six USB 2.0 ports

Board Placement

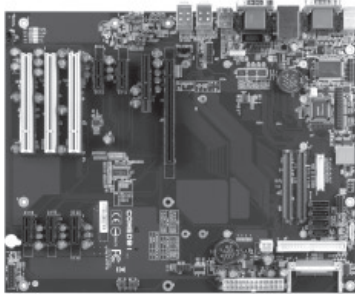


Specifications

Model Name	COME8X80-16	COME8X80-08E
Core	Processor 1.6 GHz VIA Nano™	800MHz VIA Nano™
	Chipset VX800 Unified Digital Media IGP chipset	
	System Memory 1 x DDR2 533/667 SO-DIMM socket, up to 2GB memory size	
	BIOS Award BIOS, LPC 4/8Mbit flash memory	
	Operating System Windows XP, XPe, Win CE6.0, Linux	
	Hardware Monitoring CPU temperature reading. CPU fan speed control. System Voltage monitoring	
	Watch Dog Timer Software programmable	
	Expansion Buses 1 x PCIe x4 2 x PCIe x1 3 x PCI	
Video	Chipset Integrated VIA Chrome9™ HC Integrated Graphics with 3D/2D and Unified Video Decoding Accelerator	
	CRT Interface Analog CRT support up to 1920 x 1440 resolution	
	LVDS Interface Dual-channel LVDS panel support, both 18/24-bit	
	Expansion Buses 1 x DVP port mux with PCIe x4	
Ethernet	Chipset VIA VT6107 10/100Mbps controller	
IO	USB Support up to 6 USB2.0 ports	
	SATA Support up to 2 SATA II ports	
	IDE Support up to 1 Ultra-DMA 133/100/66 IDE port	
	PCIe Support 1 PCIe x4 & 2 PCIe x1	
	PCI Support 3 PCI (32-bit, 33MHz)	
Mechanical & Environment	COM Express Pin-out Type Fully compliant to COM Express type 2	
	Dimension 95 mm x 125 mm	
	Operating Temperature 0°C~60°C	
	Storage Temperature -20°C~70°C	
	Operating Humidity 0% ~ 95% (relative humidity; non-condensing)	



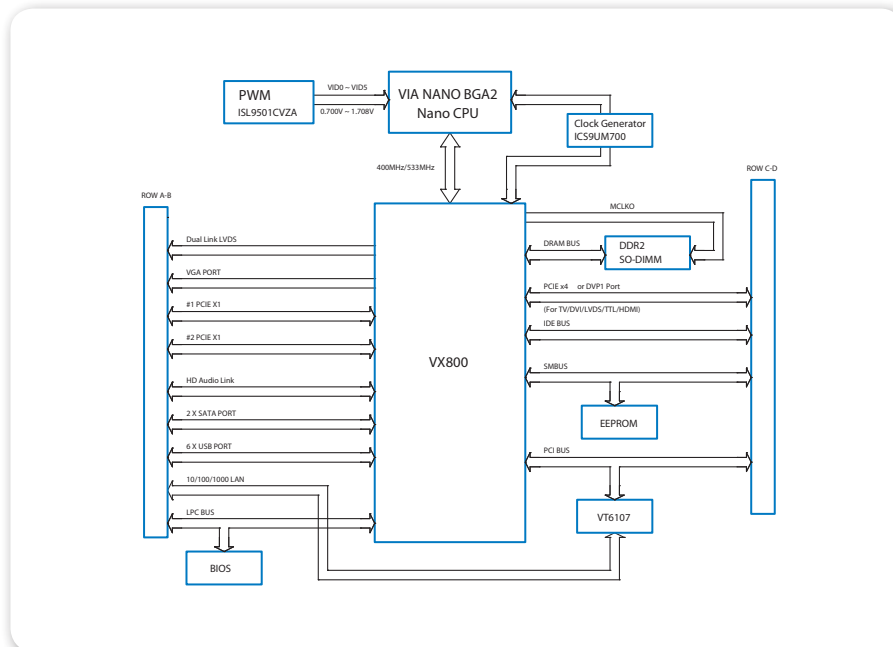
Base Board (COMEDBI)



Ordering Information

Model Name	CPU Frequency	Description
COME8X80-16	1.6 GHz Nano™	COM Express Module with 1.6 GHz Nano™ CPU, CRT, LVDS, 6 x USB, 1 x IDE, 2 x SATA, 10/100MLAN
COME8X80-08E	800MHz Nano™	COM Express Module with 800MHz Nano™ CPU, CRT, LVDS, 6 x USB, 1 x IDE, 2 x SATA, 10/100MLAN
COMEDBI	N/A	COME8X80 Evaluation Base Board

Block Diagram



* The base board is only for evaluation purpose.

** All product specifications are subject to change without notice. Update: September 15, 2010.