

Tous droits réservés. Toute réimpression ou reproduction sans autorisation écrite de FCI Electronics S.A. est formellement interdite.

All rights reserved. Reproduction or reuse in whole or in part without written authorization from FCI Electronics S.A. is expressly prohibited.

PRODUCT NUMBER
76357-YXXLF

WHEN NEEDED, SUFFIX LETTER "LF" INDICATES THE PRODUCT IS RoHS COMPATIBLE, SEE NOTE 3

01: AWG 22-30
11: AWG 20

PLATING CODE

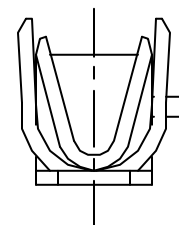
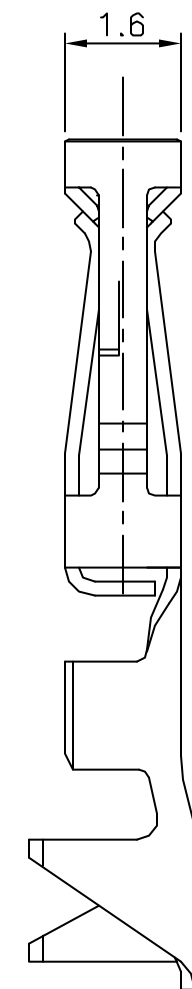
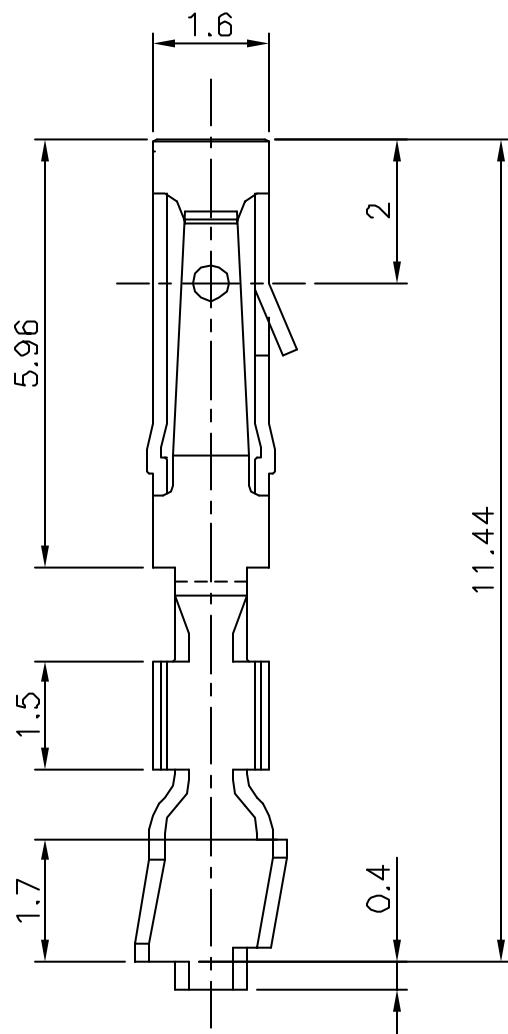
3= 0.76µm GOLD ON CONTACT AREA.
3.81µm TIN-LEAD ON TAIL.
4= 5µm TIN-LEAD ON CONTACT AREA.
3.81µm TIN-LEAD ON TAIL.

WHEN SUFFIX "LF" IS REQUIRED, 2µm MIN MATTE TIN OVER 1.27 MIN Ni IS SUPPLIED INSTEAD OF SnPb.

NOTES:

- 1 - TERMINAL MATERIAL: PHOSPHOR BRONZE.
- 2 - PRODUCT PACKED IN PLASTIC BOX (1000/BOX).
- 3 - RoHS COMPATIBLE PRODUCT SPECIFICATIONS
- a - PLATING:
 - "LF" MEANS THE PRODUCT IS LEAD-FREE, 2µm MINIMUM MATTE TIN OVER 1.27µm MINIMUM NICKEL UNDERPLATE.
- b - LABELING:
 - MEETS PACKAGING SPECS AS PER GS-14-920
- c - LEGAL STATEMENT: SEE GS-22-008

THE PRODUCT IS NOT INTENDED TO BE EXPOSED TO A MANUFACTURING SOLDER PROCESS.



WIRE DIMENSION	
AWG	OUTSIDE INSULATION DIA.
20	1.30-1.65
22-30	0.90-1.50

mat'l. code				tolerances unless otherwise specified		CUSTOMER COPY	ELECTRONICS www.fciconnect.com	
ltr	ecn no	dr	date	Linear		projection	title	
D	10759	-	88.04.05				CtW CONTACT LOOSE PIECE	
E	F00155	DLE	00.03.16	angles			product family DUBOX	
F	F10103	GCO	01.01.02				code 213	
G	F04-0373	DLE	04.11.19	dr	D LEGRAND	00.03.16	size	
H	F05-0286	DLE	05.11.07	engr	P NIZZI	00.03.16	dwg no	
				chr	JF NOTTEAU	00.03.16	sheet	
				appd	PNZ	00.03.16	1 of 1	
sheet index		revision sheet	H			scale		
		1				10:1		