

Approved	Checked	Designed	DEVELOPMENT SPECIFICATION	TEMPORARY
		T. Tabata		

T Y P E	Blue Light Emitting Diode					
A P P L I C A T I O N	Indicators					
M A T E R I A L	GaN					
O U T L I N E	Attached					
A B S O L U T E	P	*1 I _{FP}	I _{FDC}	V _R	Topr	Tstg
M A X I M U M	40	50	10	5	-25~+85	-30~+100
R A T I N G S	mW	mA	mA	V	°C	°C
C O N D I T I O N	Ta=25±3°C					

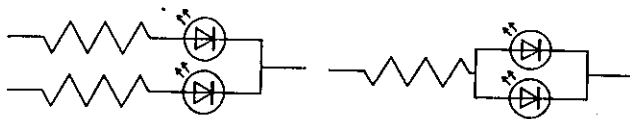
Test Specification

I t e m	Symbol	C o n d i t i o n	Typ	Limit		Unit
				Min	Max	
Forward Voltage	V _F	I _F = 5mA	3.2		3.7	V
Reverse Leakage Current	I _R	V _R = 5V			10	μA
Luminous Intensity *2	I _O	I _F = 5mA DC	12.8	6.8		mcd
Peak Emission Wavelength	λ _p	I _F = 5mA DC	470			nm
Spectral Line Half Width	Δλ	I _F = 5mA DC	30			nm

- *1. The Condition of I_{FP} is duty 10%, Pulse width 1 ms
- *2. Tolerance of luminous intensity: ±20%.

NOTE

- ★1. Please contact the Panasonic local office if you design at low current (below 1mA DC) or pulse current operation and have any questions.
- ★2. Soldering conditions...Refer to Handling note.
- ★3. Compositions of the lead Cu/Ni/Au plating
- ★4. Beware of destruction by static electricity in handling the LED.
- ★5. Circuit to operate LED.



(A) Recommended circuit.
 (B) The difference of brightness between the LED could be found due to the V_F characteristics of each LED.

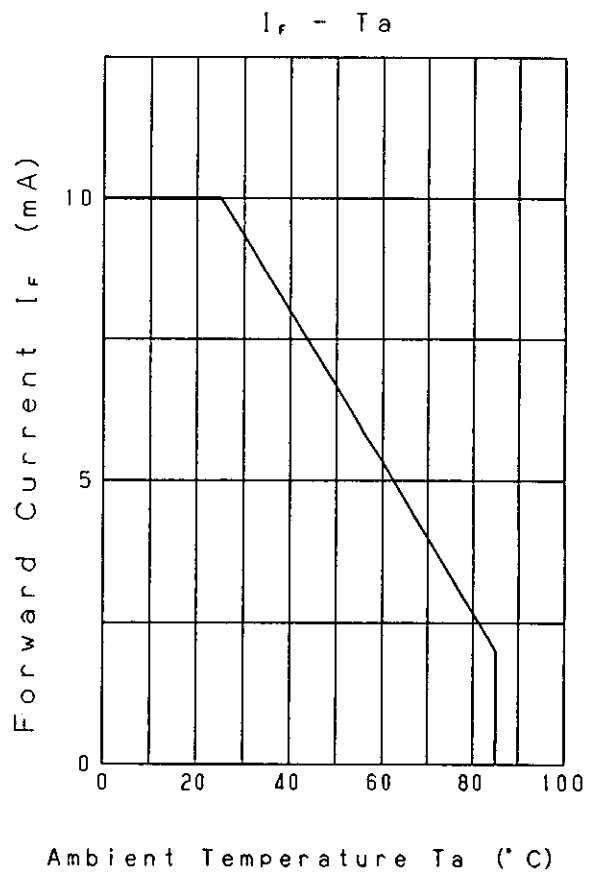
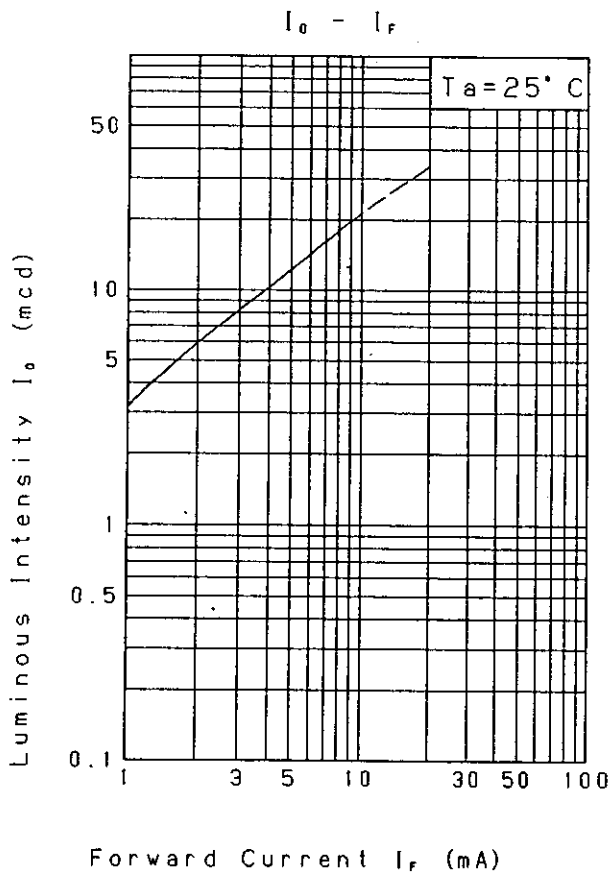
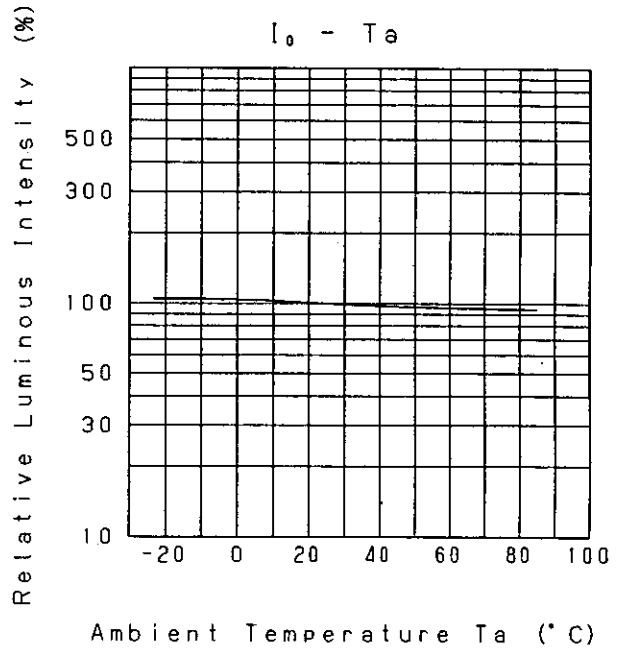
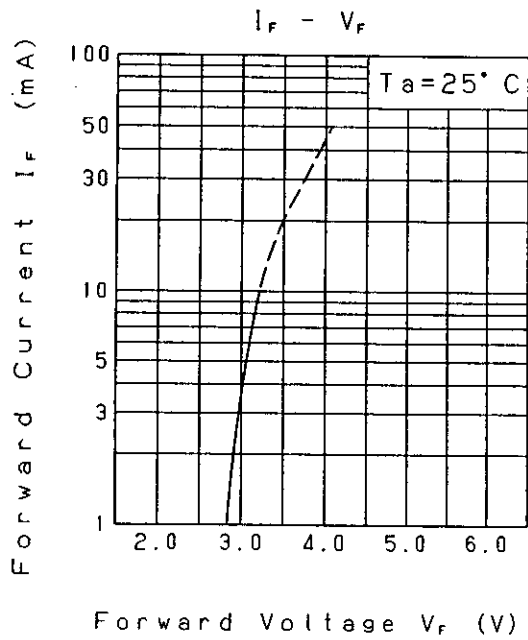
Oct. 24. 2001

Approved	Checked	Designed
		T. Tabata

DEVELOPMENT SPECIFICATION

P/N: LNJ916C8BRA

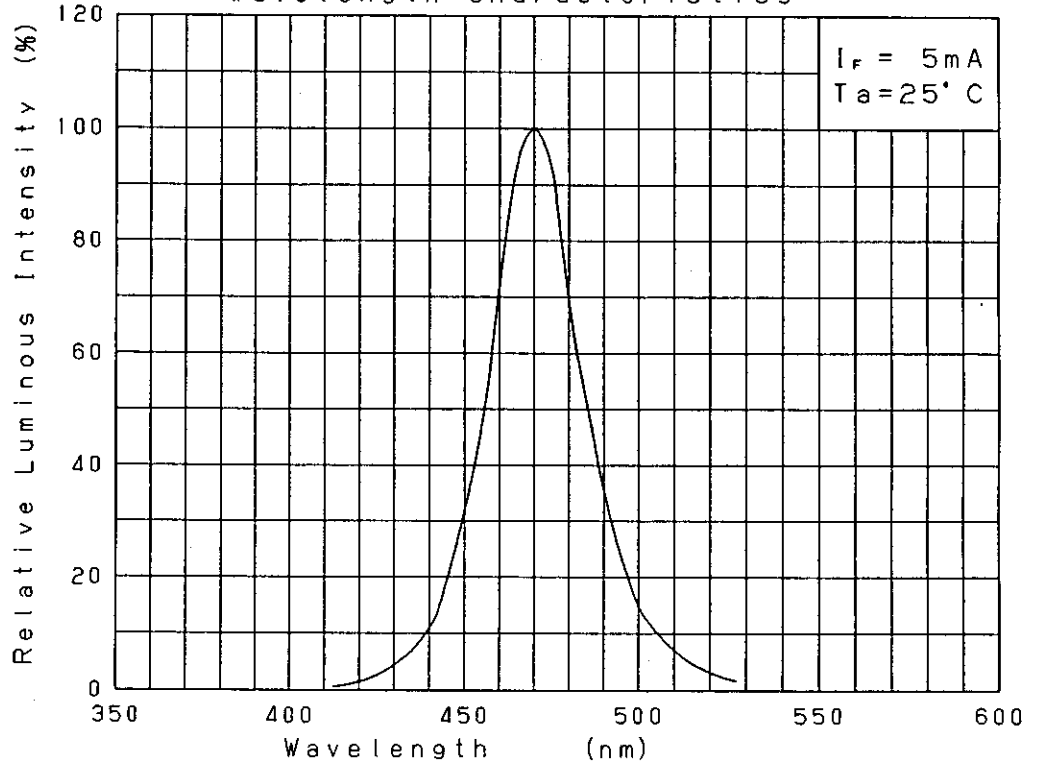
TEMPORARY



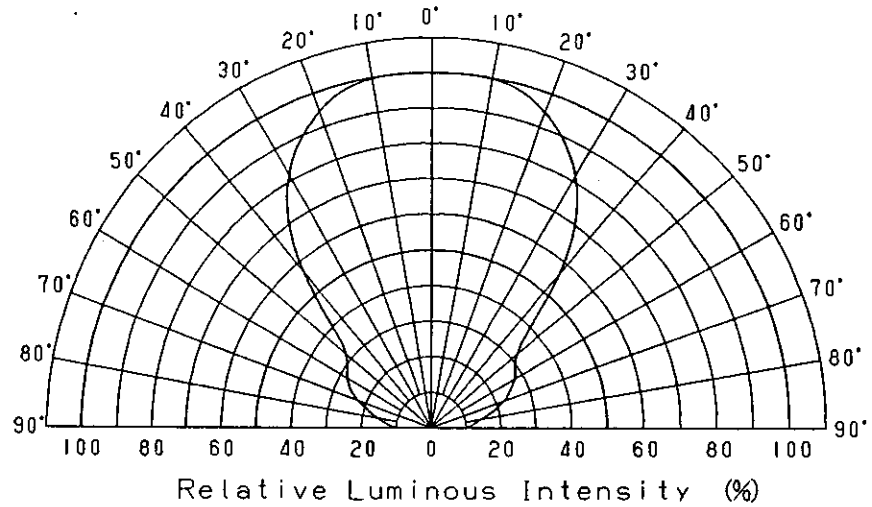
Nov. 7. 2001

Approved	Checked	Designed	DEVELOPMENT SPECIFICATION	TEMPORARY
		<i>T. Tabata</i>		

Relative Luminous Intensity
Wavelength Characteristics

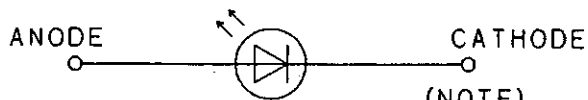
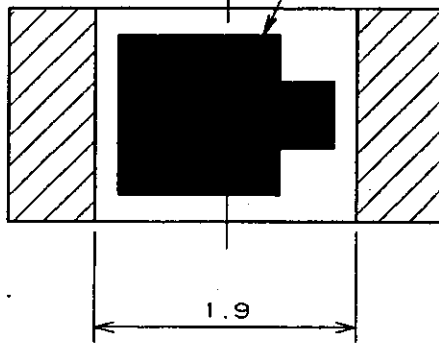
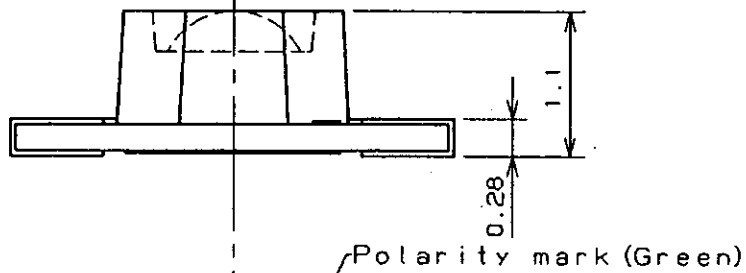
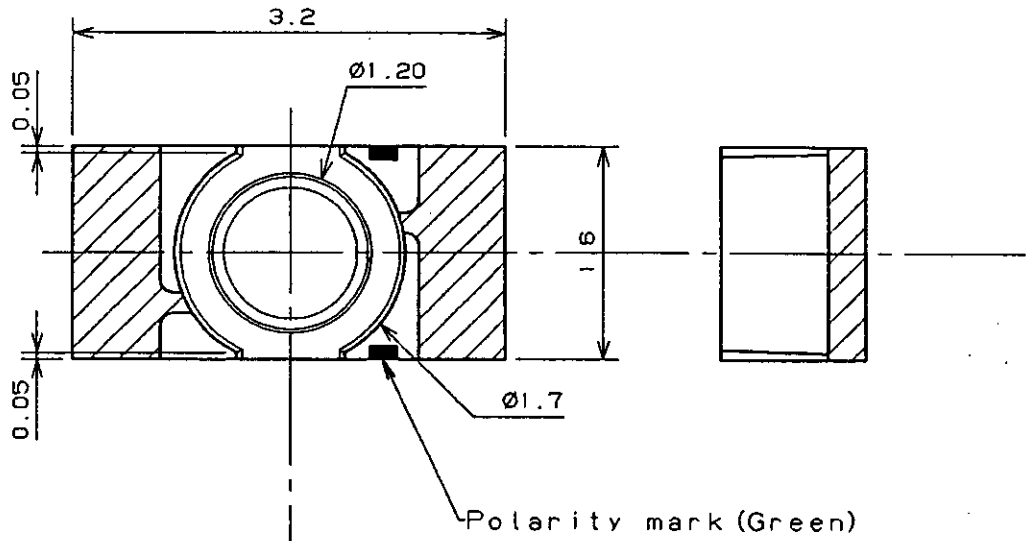


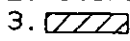
Directive Characteristics



Nov. 7. 2001

Approved <i>T. Akeda</i>	Checked <i>M. Ni</i>	Designed <i>T. Taketa</i>	DEVELOPMENT SPECIFICATION (OUTLINE) P/N:	



(NOTE)
 1. Unit: mm
 2. Tolerance unless specified is ± 0.15 .
 3.  indicate Au terminal.

Jan. 31. 2000			
---------------	--	--	--