

INPUT CHARACTERISTICS:**MAN2-3300P**

- VOLTAGE: 90 - 264 VAC FULL RANGE
- FREQUENCY: 47 - 63 Hz
- INPUT CURRENT: 6.0 / 3.0A (115 / 230 VAC)

OUTPUT CHARACTERISTICS:

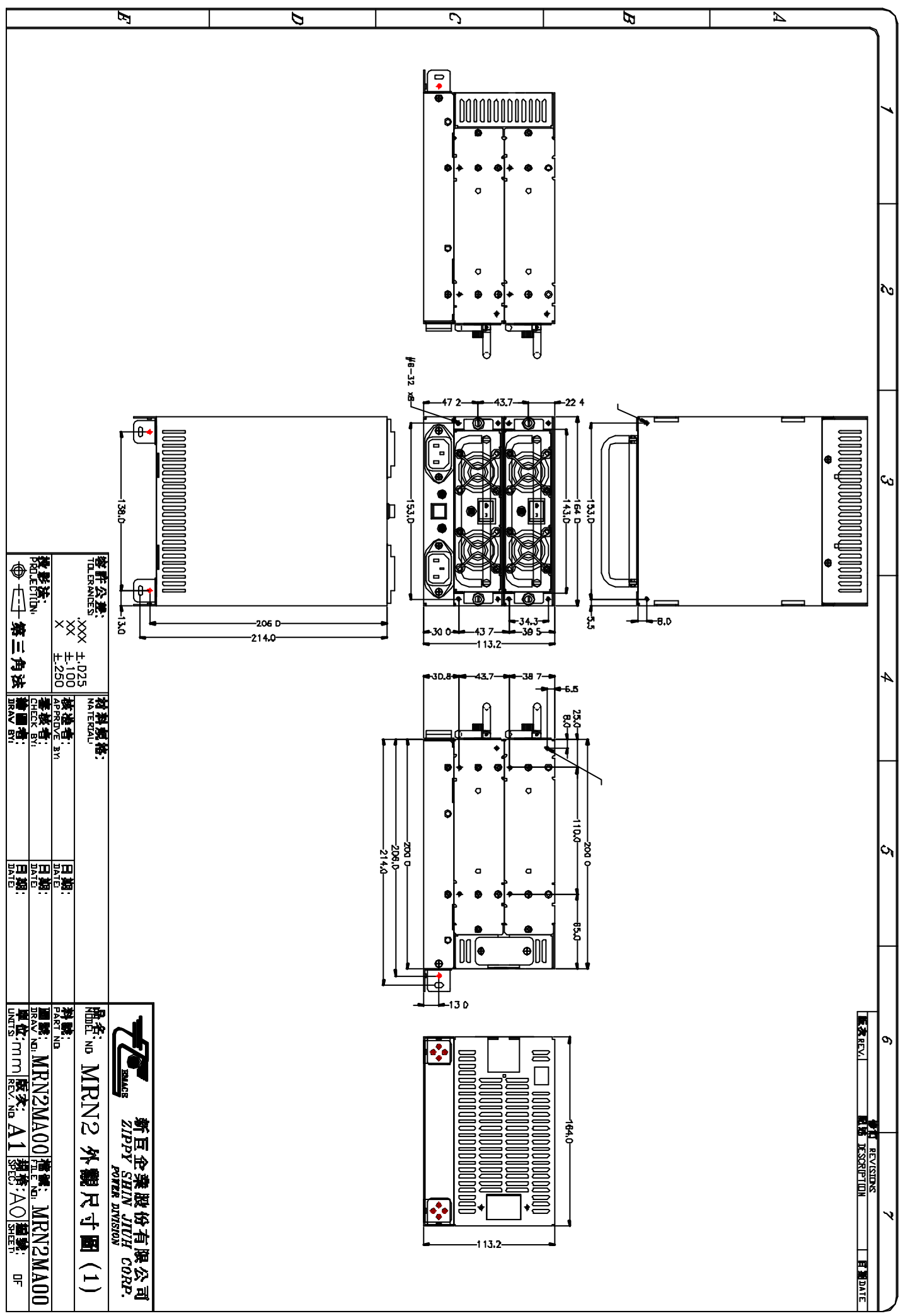
OUTPUT VOLTAGE	OUTPUT CURRENT (A)		REGULATION		OUTPUT RIPPLE & NOISE MAX. [P-P]
	MIN.	MAX.	LOAD	LINE	
5V	3	25	± 4%	± 1%	60mV
12V	1.0	17	± 4%	± 1%	120mV
+5Vsb	0.1	1.2	± 6%	± 1%	50mV

REMARKS: MAX. TOTAL OUTPUT: 300W

SPECIFICATION:

- TEMPERATURE RANGE: OPERATING 0 --- 40
- HOLD UP TIME: 16 ms MINIMUM AT FULL LOAD & NORMAL INPUT VOLTAGE
- DIELECTRIC WITHSTAND: INPUT / OUTPUT 1500 VAC FOR 1 MINUTE
INPUT TO FRAME GROUND 1500 VAC FOR 1 MINUTE
- EFFICIENCY: 72% TYPICAL
- OVER LOAD PROTECTION: 130 +/- 20%
- OVER VOLTAGE PROTECTION: **+5V → 5.7V ~ 6.8V, 12V → 13.6V ~ 15.0V,**
- SHORT CIRCUIT PROTECTION: **Shut down and latch off**
- EMI NOISE FILTER: FCC CLASS B, CISPR22 CLASS B
- SAFETY: MEET UL 1950, CSA 22.2 NO/ 950, TÜV IEC 950
- N + 1 REDUNDANCY FUNCTION
- HOT-SWAPPABLE FUNCTION
- CURRENT / BALANCE LOAD SHARING DESIGN
- ISOLATION: BUILT-IN IN EACH POWER MODULE
- CONNECTION : 48 PINS CONNECTOR (EPT PART NO. 109-40064 OR EQUIVALENT)
- ALARM METHOD : AUDIO ALARM, LEDS, POWER DEFECTIVE SIGNAL
- COOLING: TWO 40mm DC FANS IN EACH MODULE
- DIMENSION: 200 (D) x 164 (W) x 113.2 (H) mm
- POWER FACTOR CORRECTION : ACTIVE (MEET IEC-1000-3-2)

REV. NO.	REVISIONS	DATE




新巨企業股份有限公司
ZIPPY SHIN JUIH CORP.
 POWER DIVISION

品名: NO MRN2 外觀尺寸圖 (1)
 MODEL NO: MRN2

材料規格: MATERIAL:	檢驗公差: TOLERANCES:
製造者: MADE BY:	.XXX ±.025 XX ±.100 X ±.250
日期: DATE:	檢驗方法: INSPECTION:
日期: DATE:	第三角法 THIRD ANGLE

製圖者: DRAWN BY:	日期: DATE:
檢查者: CHECK BY:	日期: DATE:
繪圖者: DRAW BY:	日期: DATE:

圖號: DRAWING NO:	規格: SPEC:
MRN2MA00	AO
單位: UNIT:	圖號: DRAWING NO:
mm	A1
單位: UNIT:	規格: SPEC:
mm	AO
單位: UNIT:	圖號: DRAWING NO:
mm	A1
單位: UNIT:	規格: SPEC:
mm	AO