

Specification

1. General

PoLiFlex Cell PLF443441 incl. safety circuit
 Weight: appr. 14g
 PCM: EAP 550

2. Electrical Specification

Rated Capacity: 520 mAh min, 550 mAh typ.
 (at 0.2C from 4.2V to 3.0V at 20°C)
 Nominal Voltage: 3.7V
 Max. Operating Voltage Range: 2.75V to 4.2V
 Charging Method: Constant current + Constant voltage
 Charge Voltage [V]: 4.20 (±50mV)
 Initial charge current [mA]: Standard Charge: 260
 Rapid Charge : 520
 Charging cut-off [a) or b)]
 a) by time [h] Standard Charge: 5
 Rapid Charge : 3
 b) by min. current [mA]: 10

Max. Continuous Discharge Current: 1040 mA
 Internal Impedance (1kHz): appr. 130 mOhm
 Exp. Cycle Life: >500 cycles >70% of initial cap. (0.5C/0.5C)
 ID=3.9kOhm ±1%; NTC=10kOhm ±3%, B-Value 3435K ±3%

Cell Protection:
 Overcharge Detection: max. 4.35V
 (max. 2sec. delay, resume min. 4.0V)
 Overdischarge Detection: min. 2.2V
 (max. 250msec. delay, resume by charge)
 Overcurrent Detection: 3.0A to 5.5A (4 to 16 msec. delay)

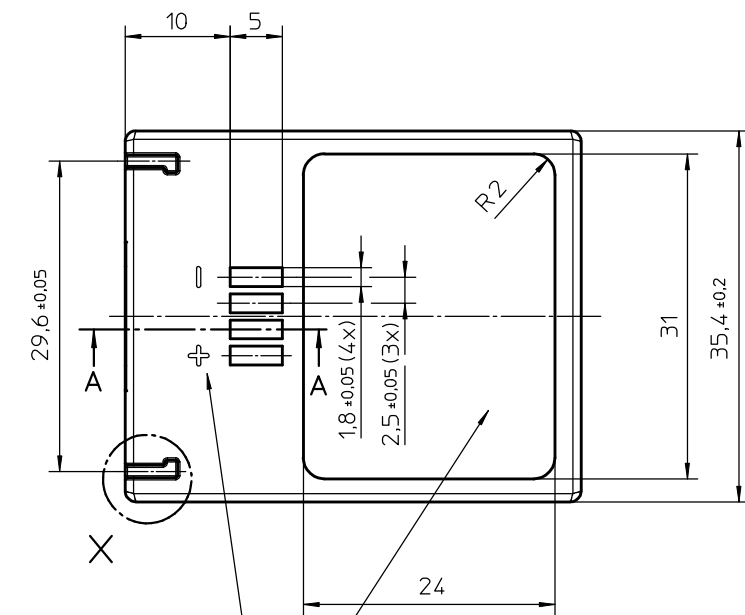
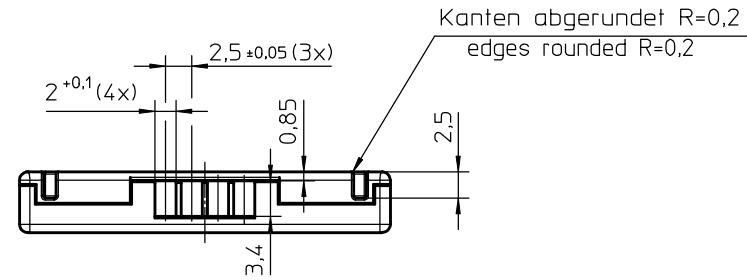
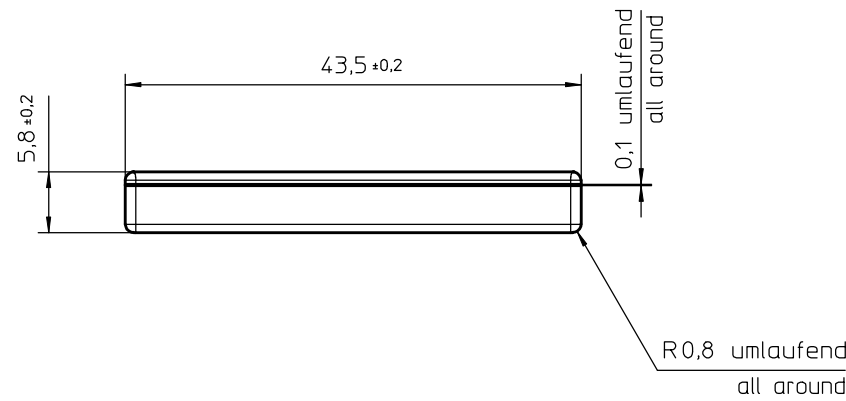
3. Ambient Conditions

Temperature Range
 -Charge: 0 to +45°C
 -Discharge: -20 to +60°C
 -Charge Retention/Storage [%]: 1 year at -20 to 20°C >70
 3 month at -20 to 45°C >70
 1 month at -20 to 60°C >70

Humidity: 65 ± 20%RH

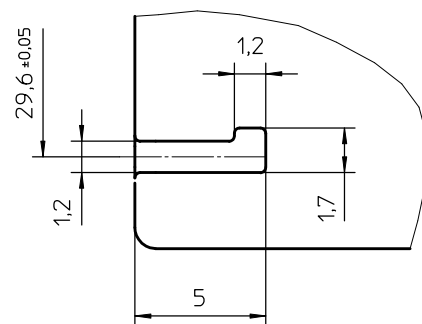
4. Safety

Please follow Handling and Safety Precautions Poliflex

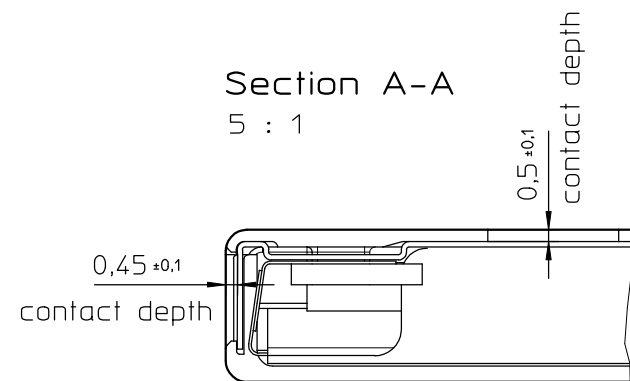


label area and
 + and - symbol to be
 recessed about 0.05mm

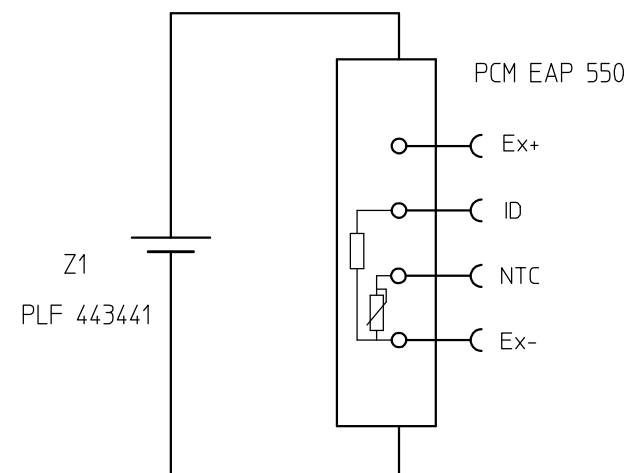
Detail X
 5 : 1



Section A-A
 5 : 1



Schaltplan
 circuit diagram



Freigabe

07	Tolerance for ID ±1%, for NTC 3% added, Specification revised	27.07.04	bschweinst
06	text "Do not handout without NDA" changed into "Patent pending"	15.07.04	bschweinst
05	Specification revised	23.06.04	bschweinst
04	Spec. updated, Dimens. contact depth add.	03.06.04	erichter

Index		Änderung / Alteration		Date	Name
Freimaßtoleranzen	Maßstab 2:1	Diese Maße werden besonders geprüft		Material	
General tolerances	Als Betriebsgeheimnis anvertraut, alle Rechte vorbehalten.	This dimensions are considered inspectable		VKB-Nr. 66590 711 099	
up to 6	± 0,1	Date	Name	Benennung / Designation	
over 6	± 0,2	Bearb. Desig.	05.02.04	1/PLF443441 PCM.KSK	
up to 30	± 0,3	Gepr. Check.	09.08.04	easy-pack-battery	
over 30	± 0,5	Proprietary data, company confidential, all rights reserved.		Zchnng. / Dwg.Nr.	
Maße in mm		Projection:	2	688819	
All dimensions are in mm		Origin: KE_1370_03	repl.f.:	repl.by:	Alloc.: VZE01

Patent pending