

Flat Panel Computer and Monitor Solutions Designed to Perform in Any Environment



Table of Contents

Introduction	3	Industrial & Rack-Mount Computers and Monitors	25
Sales Contact Information	4	• Nd61400	26
Flat Panel Computers	5	• Nd60501	27
• DisplayPac-OP	6	• Nd61220	28
• DisplayPac-PPC	7	• Nd61120	28
• Panel C	8	• Nd-M17-KB	29
• Intelligence IPC	9	• Nd-M15-KB	29
• DisplayPac-Access-12	10	• ThinView-18-RM	30
• DisplayPac-Access-10	10	Military, Marine & Custom Systems	31
• PAC-MMS	11	• Sentinel Series	32
Hazardous Area Computers & Monitors	12	• MPAC-18	33
• Survivor-Ruffneck	13	• MPAC-10	34
• Wolverine	14	General Information	
• Survivor-WildCat	15	• Directions & Accommodations	35
• Panel C	8	Custom Services	
• Intelligence IPC	9	• Custom Services	Back Cover
Thin Client & Embedded Systems	16		
• PAC-Xscale	17		
• PAC-Xscale-12	18		
• DisplayPac-ARM	19		
Industrial & OEM Flat Panel Monitors	20		
• VAMP-WN Panel-Mount and Open-Frame Series	21		
• VAMP-SlimVista-19	22		
• VAMP-SlimVista-17	22		
• VAMP-SlimVista-15	22		
• VAMP-LMV10	23		
• VAMP3-SlimVista	24		

Note: This catalog represents our newer and more popular products. We also offer many configurations and systems that do not appear in this catalog. Information on those products may be obtained from our website www.cdynamics.com. Please call our factory for details or if you have a custom configuration you would like to discuss.

Introduction

Welcome

Computer Dynamics (CDI) was established in 1981 to design and produce board-level computer products for industrial users. Since then, our product line has expanded into a full array of flat panel display-based products. In fact, we pioneered the development of the flat panel computer and flat panel monitor, and now lead the industry in both the breadth of our product line and the depth of our custom solution expertise.

In January 1999, CDI was acquired by GE Fanuc Automation Americas, Inc. In January 2004, CDI united forces with GE Fanuc's Embedded Systems group to create an enhanced solutions offering. GE Fanuc combined the product lines of VMiC and RAMiX (acquired in 2001 and 2003 respectively) to form GE Fanuc Embedded Systems.

Your operator interface solution starts with a call to one of our Applications Engineers, who will be your design partner from concept through manufacturing.

Selection of Standard Products

Comprising both flat panel computers and flat panel monitors in LCD sizes from 6.4" to 30", from open-frame to fully enclosed systems suited for hazardous areas, our standard product line is the market's broadest. As computer and display technologies evolve, we keep pace with an ever-expanding choice of systems.

Unmatched Custom Solution Capabilities

Our ability to design and manufacture systems uniquely suited to your requirements rests on these core competencies:

Electronics Design

Single board computers; custom video interfaces; enhanced brightness displays; temperature sensing and control systems.

Enclosure Design

We design and manufacture basic functional "boxes" all the way to Class I, Division 1 and 2 enclosures. We will help you attain and maintain agency compliance (medical, safety, CE, etc.) and can provide full system assembly and private labeling.

Customer Service

All our customers have an Applications Engineer as their design partner for the life of their project.

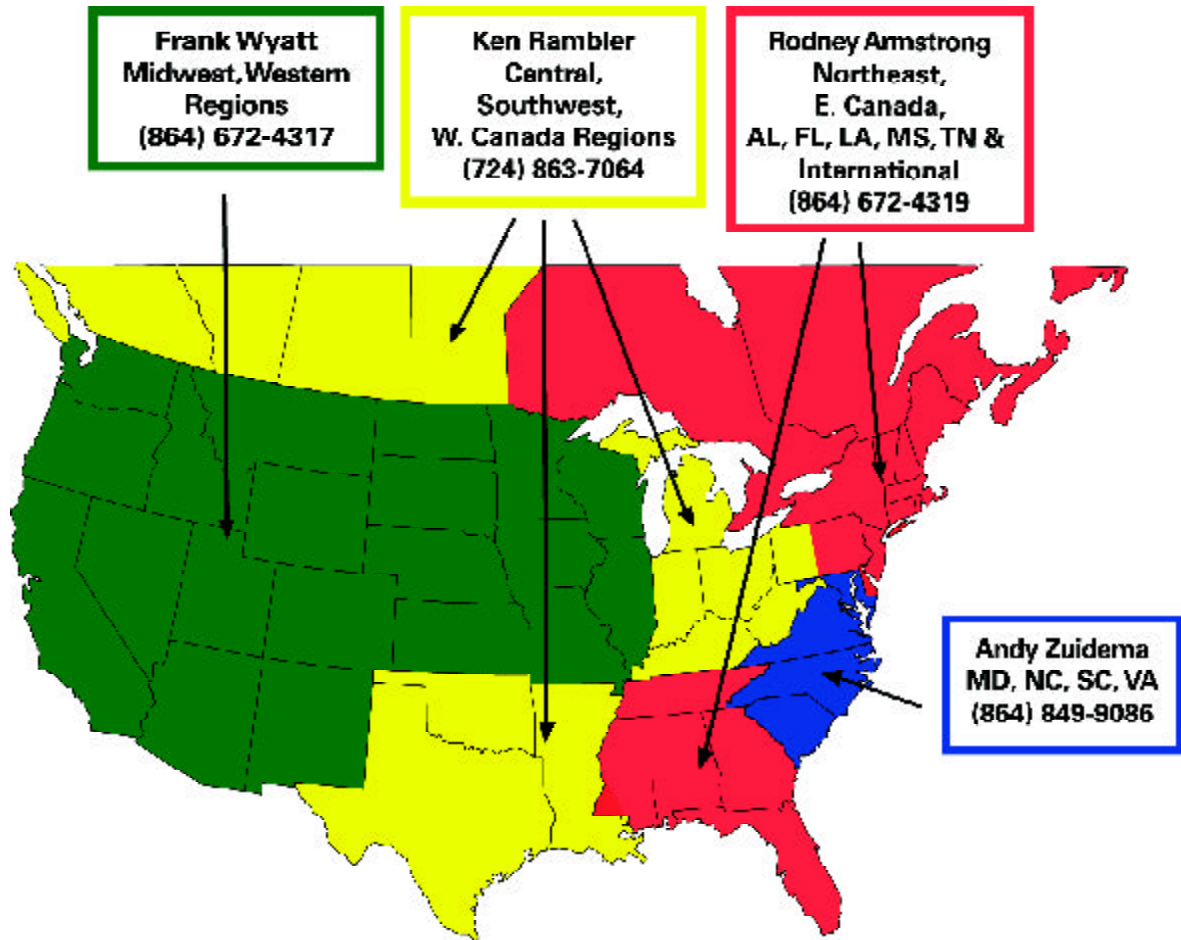
Some OEM and End-User Markets We Serve

- Medical Instrumentation
- Hazardous Location
- Marine Industry
- Outdoor Point of Sale/ Information
- Military COTS
- Semiconductor Equipment
- Industrial Plant Floor & Machine Control



Sales Contact Information

Call us for flat panel touchscreen computers and monitors, industrial PCs and custom solutions!



Area Sales Manager
Bobby Dixon (864) 672-4323

Technical Support
Scott Underwood (864) 672-4311

Inside Sales
Betty Bishop (864) 672-4306

Oil & Gas, Hazardous Area Applications
Ken Rambler (724) 863-7064

Flat Panel Computers

DisplayPac-OP

The NEMA 12 DisplayPac-OP panel-mount computer offers a choice of computing engines up to 2.8 GHz Pentium® 4; choice of display size: 12.1", 15" or 17" active matrix TFT LCD; and FCC, CE and UL approvals.



DisplayPac-PPC

The CE, UL and C-UL approved DisplayPac-PPC industrial computer features up to 3.06 GHz Pentium 4 single board computer, 15" AMTFT LCD and resistive touchscreen. The 15" stand-alone DisplayPac-PPC has a fireproof plastic enclosure.



Panel C

The Panel C features a bright 15" XGA color AMTFT LCD, and is powered by a Pentium III 1 GHz processor with up to 512M RAM. Built-in numeric keypad, side keys (PC control and CNC), and function keys (Fx and Alpha) provide human-machine interface.



Intelligence IPC

Intelligence IPC features choice of 12" or 15" AMTFT display, up to 1.4 GHz PIII processor, 512M RAM and meets CE, UL1604, NEMA 4, IP65, Class I, Division 2 certifications.



DisplayPac-Access

The DisplayPac-Access, featuring quick-release latches to permit on-site maintenance, upgrades, etc., is available with 10.4" or 12.1" display sizes.



PAC-MMS

Suitable for machine monitoring applications, the PAC-MMS offers a 15" display, resistive touchscreen, up to 1 GHz processing power, up to 512M of SDRAM and a NEMA 12 front panel.



Flat panel computer systems are the core of our business. We were among the first to introduce the concept of combining flat panel displays and touchscreens integrated with a PC compatible computer system (circa 1990). Since then we have improved on these systems by providing the latest in industrial computers, LCD displays and various touchscreen technologies. We pioneered many of the packaging and mounting techniques that make our products superior for industrial applications. The above units offer an introduction to our vast resources of custom and semi-custom designed systems. Please call our Applications and Sales Specialists for help with your current project.

Product Specifications

DisplayPac-OP

12.1", 15", 17" NEMA 12 Panel-Mount Computers with FCC, CE & UL Approvals



Intended for all applications requiring high reliability in a small package, the DisplayPac-OP industrial computer features a choice of computing engine up to 2.8 GHz, choice of display size 12.1", 15" or 17" active matrix TFT LCD, resistive touchscreen, hard drive, floppy, CD-ROM, two PCI expansion slots (one shared ISA) and an internal power supply in a heavy-duty steel enclosure. It is FCC, CE and UL approved and rated to operate from 0° - 50°C at 10 - 90% humidity.

Display Specification

- Display
 - 12.1" 800x600 AMTFT, 340 nit;
 - 15" 1024x768 AMTFT, 250 nit;
 - 17" 1280x1024 AMTFT, 250 nit

Touchscreen Specification

- Type 5-wire resistive, serial

Computer Specifications

- CPU Socket 370 Intel Tualatin up to 1.26 GHz, Pentium III 66/100/133 up to 1 GHz, Celeron 66/100 up to 1.2 GHz, Socket 478 Pentium 4 CPU up to 2.8 GHz (15" and 17" units only)
- Memory One 168-pin DIMM socket, SDRAM up to 512M
- Display Integrated VGA/LCD controller, 2D/3D GUI engine, 4X AGP, video memory up 64M (sharing system memory)
- Dual display VGA and RCA TV-out ports supporting Windows® O/S, mirroring and multiple dual display modes
- Ethernet 10/100BaseT
- Audio AC'97 Audio Codec (Line-in, Line-out, and MIC-in)
- VGA port One VGA interface

- USB ports Up to four USB ports
- Serial ports Four ports (3x RS-232, 1x RS-232/485); COM3 used for touchscreen
- Parallel port One supporting SPP/EPP/ECP
- Floppy One external interface with DC power (12.1" and 15" units)
- Keyboard/mouse One PS/2 keyboard, one PS/2 mouse
- Digital I/O Two input, two output with one RJ-12 phone jack
- Watchdog timer 64 time intervals
- Expansion slots One PCI and one PCI/ISA shared; two PCI (17")
- Front bezel Aluminum bezel (black or silver) standard; small bezel, big bezel (steel, beige) optional

Peripheral & Storage Specifications

- Powersupply 150W ATX (200W P4); input range 100 - 230 VAC @ 47 - 63 Hz
- Storage devices 3.5" IDE hard drive, one slim-type CD-ROM, one floppy drive

Mechanical & Environmental Specifications

- Construction Heavy-duty steel; chassis color: beige
- Mounting Panel mount with brackets
- Dimensions
 - 12.1" 14.37" x 11.57" x 4.07" (WxHxD)
365 mm x 294 mm x 103.5 mm
 - 15" 16.06" x 13.03" x 4.39"
408 mm x 331 mm x 111.5 mm
 - 17" 17.48" x 14.80" x 5.19"
444 mm x 376 mm x 130 mm
- Certifications FCC, CE, UL, NEMA 12
- Temperature
 - Operating 0° - 50°C
 - Storage -20° to 70°C
- Relative humidity 10 - 90% non-condensing
- Shock and vibration 10G peak acceleration; 5 - 7 Hz, 0.1" double amplitude displacement 17 - 500 Hz, 1.5G acceleration peak to peak

Options

- Storage device DVD, CD-ROM-R/W
- Powersupply DC 90W, 9 - 16V or 18 - 36V
- Flash drive Solid state memory; call for details
- Operating system Windows 2000, 9x, ME, NT, NTE, XP, XPE, Linux

Ordering Information

PAC-OP-<Display>-<CPU-speed>-<Memory>-Options
Specifications may change without notice due to component changes.

Product Specifications

DisplayPac-PPC

15" Flat Panel Computers with FCC, CE, UL and C-UL Approvals



The DisplayPac-PPC industrial computers feature a choice of computing engine up to 3.06 GHz, 15" active matrix TFT LCD, resistive touchscreen, hard drive, floppy, CD-ROM, two PCI expansion slots (one shared ISA) and power supply in a sturdy, fire-proof plastic enclosure. The DisplayPac-PPC is intended for light industrial applications requiring high reliability in a small package. Tabletop mounting is standard with swing arm or panel mount options. The DisplayPac-PPC is FCC, CE, UL and C-UL approved and rated to operate from 0° - 50°C at 10 - 90% humidity.

Display Specification

- Display 15" 1024x768 AMTFT LCD, 250 nit

Touchscreen Specification

- Type 5-wire resistive, serial

Computer Specifications

- CPU Socket 370 Intel Tualatin up to 1.26 GHz, Pentium III 66/100/133 up to 1 GHz, Celeron 66/100 up to 1.2 GHz, Socket 478 Pentium 4 CPU up to 3.06 GHz
- Memory One 168-pin DIMM socket, SDRAM up to 512M
- Display Integrated VGA/LCD controller, 2D/3D GUI engine, 4X AGP, video memory up to 64M (sharing system memory)
- Dual display VGA and RCA TV-out ports supporting Windows O/S, mirroring and multiple dual display modes 10/100BaseT
- Ethernet AC'97 Audio Codec (Line-in, Line-out and MIC-in)
- Audio AC'97 Audio Codec (Line-in, Line-out and MIC-in)
- Serial ports Four serial ports (3x RS-232, 1x RS-232/485); COM3 used for touchscreen; two firewire ports IEEE1394 (P4)

- Parallel port One supporting SPP/EPP/ECP
- USB ports Four USB ports
- Floppy One external interface with DC power
- Keyboard/mouse One PS/2 keyboard, one PS/2 mouse
- Digital I/O Two input, two output one RJ-12 phone jack
- VGA port One VGA interface
- Watchdog timer 64 time intervals
- Expansion slots One PCI and one PCI/ISA shared
- Front bezel HDD, LAN and power LED indicators

Peripheral & Storage Specifications

- Powersupply 150W ATX; input range 100 - 230 VAC @ 47 - 63 Hz
- Storage devices 3.5" IDE hard drive, one slim-type CD-ROM, one floppy drive

Mechanical & Environmental Specifications

- Construction Inside: heavy-duty steel
Outside: fireproof plastic
- Color Beige or black
- Mounting Tabletop stand: 60° - 90°
- Dimensions 16.36" x 14.15" x 4.74" (WxHxD)
416 mm x 359 mm x 120.5 mm
- Certifications FCC, CE, UL, C-UL
- Temperature — Operating 0° - 50°C
— Storage -20° to 70°C
- Shock and vibration 10G peak acceleration; 5 - 7 Hz, 0.1" double amplitude displacement 17 - 500 Hz, 1.5G acceleration peak to peak

Options

- Storage device DVD, CD-ROM-R/W
- Mounting Panel mount with brackets; swing arm mount: VESA mounting holes (100 mm x 100 mm or 75 mm x 75 mm)
- Powersupply DC 90W, 9 - 16V or 18 - 36V
- Flash drive Solid state memory; call for details
- Operating system Windows 2000, 9x, NT, NTE, XP, XPE, Linux
- Medical approval EN60601-1

Ordering Information

PAC-PPC-15-<CPU-speed>-<Memory>-<Options>

Specifications may change without notice due to component changes.

Product Specifications

Panel C

15" Flat Panel Computer with Built-in Alpha & Numeric Keypad



The Panel C features a bright 15" XGA active matrix color TFT LCD, and is powered by a Pentium III 1 GHz processor with up to 512M RAM. Built-in numeric keypad, side keys (PC control and CNC), and function keys (Fx and Alpha) provide human-machine interface. Status LEDs indicate power, run, fault, etc. The unit features a 40-gigabyte hard disk drive for data storage.

Facilitating ease of use are side-access serial ports, parallel port, USB port, external monitor port, I/O link, and an Ethernet port. Removable hard drive and power supply, along with front-accessible USB and CompactFlash, make for simple maintenance. Your choice of clip or stud mount ensures quick and easy installation of the lightweight unit – only 20 pounds in all. PCI and ISA slots in conjunction with a 133 MHz front-side bus permit ample system expansion.

Specifications

- Dimensions 18.85" x 13.85" x 6.40" (WxHxD)
478.8 mm x 351.8 mm x 162.7 mm
- Display 15" 1024x768 256k color AMTFT LCD
- Viewing area 12" x 9" (WxH), 15" diagonal
305 mm x 229 mm
- Touchscreen Resistive
- CPU Pentium III 1 GHz and 133 MHz processor front-side bus
- Memory 128M RAM (expanded to 512M) single DIMM slot
- Video 4M dedicated and shared main memory
- Diagnostics Watchdog timer, temperature and fan function
status monitoring on the Smbus

- Front LED Fault/HDD, CAPS lock; function (text mode), power, CompactFlash ready
- Hard drive Removable 2.5" hard disk drive 40G (vibration resistant mounting)
- I/O ports Front access: CompactFlash port; two USB (Rev 1.1) ports
Side access: 10BaseT/100BaseTx Ethernet; one USB (Rev 1.1); ECP+EPP parallel port; two RS-232 serial ports; PS/2 keyboard and PS/2 mouse port
- Expansion slots One PCI, one PCI/ISA slot
- Function keys Vertical side keys: eight keys along each side of display with full number keypad and keyboard functions (Arrow keys, Tab, Esc, Space, Alt, Delete, Ctrl, etc.) PC programming standard
Horizontal keys: 28 keys located below display for user programmed functions. Text mode key (lock) for alpha characters. CAPS Lock key for alpha characters caps switch.
- Floppy External FDD connector for operator panel mounting
- CD-ROM External IDE connector for operator panel mounting
- Powersupply 120/240 power supply standard auto-sensing; 24 VDC option
- Mounting Clip or stud
- Operating system Windows 95, 98, ME, NT, 2000, XP
- Environmental NEMA 4/4x/12; IP65 (panel mount)
- Certification CE, UL, Class I, Division 2
- Temperature — Operating 0° - 50°C
— Storage -20° to 60°C
- Relative humidity 5 - 80% non-condensing
- Shock and vibration 5 - 500 Hz, 1G; 15G / 11 msec, 3 shocks / 6 axis', ½ sine pulse (operational); 20G / 11 msec, 3 shocks / 6 axis', ½ sine pulse (non-operational); 4.0 KV direct contact electro-static discharge

Ordering Information

PANELC-<DRAM>-Mount

Specifications may change without notice due to component changes.

Product Specifications

Intelligence IPC

12.1" or 15.1" Panel-Mount, Class I, Division 2 Industrial Computers



Intelligence IPC provides current PC technologies with innovative system integration features needed for today's complex control and challenging supervisory applications. This compact, panel-mounted industrial computer is ideal for use as an operator panel or as a secure system platform for machine control. Powered by a Pentium III or VIA C3 processor, Intelligence IPC supplies all the important interfaces required for factory monitoring or control applications. In addition to an integrated 10/100 Mbit Ethernet port and USB adapter, ISA and PCI slots are available for field bus, measurement, and other add-on requirements.

Intelligence IPC is available with choice of display size, 12.1" or 15.1". Its five built-in system keys provide access to a soft keyboard and Windows functionality. With NEMA 4/12 sealed front panels, the Intelligence IPC meets stringent specifications of industrial-hardened equipment. Certification to UL hazardous locations (UL 1604, Class I, Division 2) has been obtained for the product family along with CE agency approval.

Specifications

- Display
 - 12.1" 800x600 AMTFT LCD; 300 nit
 - 15.1" 1024x768 AMTFT LCD; 400 nit
- Touchscreen 5-wire resistive
- System keys Five external keys, soft keyboard software
- CPU 1.4 GHz Pentium PIII; VIA C3 1 GHz
- Memory 256M or 512M SDRAM DIMM
- Ethernet 10/100 Ethernet; dual Ethernet
- USB ports Two ports (one in front, one on side)
- Keyboard/mouse PS/2
- Drives 3.5" 40G hard disk drive, CD-ROM (read/write optional), floppy drive
- Expansion Two (ISA and/or PCI), single-slot option (12.1"); three (ISA and/or PCI), five-slot option (15.1")
- Serial ports COM1: RS-232/RS-422/RS-485; COM2: RS-232; COM3: RS-232
- Video graphics 4M AGP
- Operating system Windows 2000, NT, NTE, XP, XPE
- Power 115/230 VAC; 100W
- Certification UL 1604 Class I, Division 2; CE; NEMA 4; IP65
- Temperature 0° - 40°C (operating)
- Dimensions
 - 12.1" 13" x 10.55" x 7.2" (WxHxD)
330 mm x 268 mm x 182.8 mm
 - 15.1" 15.35" x 12.28" x 6.14"
390 mm x 312 mm x 156 mm

Product Specifications

DisplayPac-Access

10.4", 12.1" Flat Panel Computers with Quick-Release Latches



The DisplayPac-Access features a 10.4" or 12.1" SVGA active matrix TFT LCD, a Celeron or Pentium III computing engine with PC/104 expansion, a resistive touchscreen and optional keypad. The sturdy enclosure design features quick-release latches which let the user easily detach the computer and display portion from the touchscreen and front bezel. This simple access permits quick on-site maintenance, system upgrades, software changes and field replaceability of backlights.

Specifications

- Dimensions
 - 10.4" 13.6" x 11.1" x 5.75" (WxHxD)
 345 mm x 282 mm x 146 mm
 - 12.1" 14.8" x 14.0" x 6.8"
 376 mm x 356 mm x 173 mm
- Display
 - 10.4" 640x480 256k color TFT LCD
 - 12.1" 800x600 256k color TFT LCD
- Viewing area
 - 10.4" 8.3" x 6.2" (WxH), 10.4" diagonal
 211 mm x 158 mm
 - 12.1" 9.7" x 7.3" (WxH), 12.1" diagonal
 246 mm x 185 mm

- Touchscreen Resistive
- CPU 566 MHz Celeron; 700 MHz, 850 MHz or 1 GHz Pentium III processor
- Memory 64M, 128M or 256M
- Video C&T 69030 LCD/CRT controller
- I/O expansion PC/104 connector allows up to two internal PC/104 I/O modules.
- Ethernet 10/100BaseT
- Hard drive 2.5" shock-mounted hard drive
- Serial ports Two
- Parallel port One
- Temperature 0° - 50°C (operating)

Options

- X3 Three (3) ISA/PCI shared
- KP Membrane keypad with function keys: F1-F10

Ordering Information

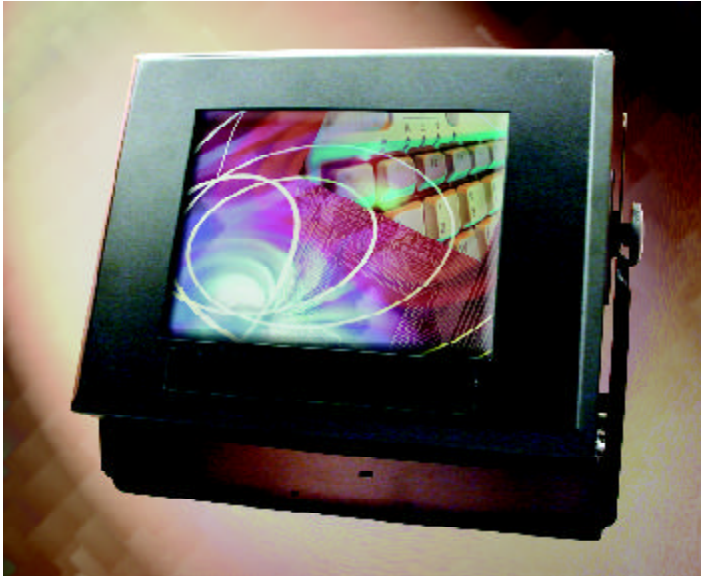
Access-<Display>-<CPU-speed>-<DRAM>-Options
Specifications may change without notice due to component changes.

- <Display>
 - 10 (10.4" LCD)
 - 12 (12.1" LCD)
- <CPU-speed>
 - 850 (850 MHz PIII)
 - 1G (1 GHz PIII)
- <DRAM>
 - 128M
 - 256M
- Options
 - Call for additional options

Product Specifications

PAC-MMS

15" Flat Panel Computer with NEMA 12 Front Panel



Utilizing our standard enclosure housing design, the PAC-MMS offers a 15" XGA AMTFT LCD and a 5-wire resistive touchscreen. The system includes up to a 1 GHz Pentium III single board computer with up to 512M of SDRAM, 10/100BaseT Ethernet, three serial ports, a parallel printer interface and SB16 compatible audio. A 2.5" hard drive is integral to the system, and a 3.5" floppy drive is accessible through the side of the enclosure.

The rugged, powder-coated aluminum enclosure offers swing arm mount or an optional mounting yoke.

Specifications

- Dimensions 15.68" x 12.18" x 6.98" (WxHxD)
398.27 mm x 309.37 mm x 177.29 mm
- Display 15.1" true color active matrix display with maximum resolution of 1280x1024; 250 nit brightness
- CPU Up to 1 GHz Pentium III processor

- Memory Up to 512M SDRAM
- Video C&T 69030 LCD/CRT controller
- Ethernet 10/100BaseT
- Harddrive 2.5" hard drive
- Floppy drive 1.44M floppy drive
- Audio SB16 compatible audio
- Std. I/O ports Three serial ports, one parallel port supporting SPP/EPP/ECP, PS/2 keyboard and mouse, two USB interfaces, one VGA (DB15), one 1/8" audio (speaker out) connector
- Expansion slots 2 PCI and 2 ISA (mechanically shared)
- Touchscreen 5-wire resistive
- Construction All aluminum enclosure with black textured powder coat finish
- Mounting Swing arm using either 75 mm or 100 mm VESA mount hole pattern
- Weight 17 lbs. with optional mounting yoke
- Operating system Windows 9x, NT, 2000, XP, XPE
- Power supply 110/220 auto-sensing
- Temperature
 - Operating 0° - 45°C
 - Storage -25° to 65°C
- Humidity 10 - 90% non-condensing
- Spill resistance Front panel designed to NEMA 12

Options

- Display 12.1" 800x600 LCD
- Mount Mounting yoke
- Hard drive 15G to 40G
- I/O access Locking swivel door for I/O access
- Flash drive Solid state memory; call for details
- Operating system Windows 2000, 9x, NT, XP, XPE, Linux

Ordering Information

PAC-MMS-<CPU-speed>-<DRAM>-Options

Specifications may change without notice due to component changes.

Hazardous Area Computers and Monitors

Survivor-Ruffneck

The ATEX Zone 1, explosion proof Survivor-Ruffneck is a ruggedized, sunlight-readable computer based on a single board computer with an Intel Pentium M 1.6 GHz processor. *(Shown with optional yoke.)*



Wolverine

The HAZLOC-approved Wolverine features a 15" sunlight-readable display, a single board computer with an Intel Pentium M 1.6 GHz processor, and a NEMA 4 environmentally sealed enclosure with corrosion resistance.

Survivor-WildCat

The Survivor-WildCat 15" sunlight-readable computer is HAZLOC approved and ruggedized for use in virtually any environment. It sports a NEMA 4 environmentally sealed aluminum fabricated enclosure with corrosion resistance.



Panel C

See Flat Panel Computers section (pg. 8) for details.

Intelligence IPC

See Flat Panel Computers section (pg. 9) for details.

Computer Dynamics has been involved with hazardous area computers and monitors since 1996. Our innovative backlighting technologies, system controls design and environmental packaging designs have propelled our products to lead the industry in hazardous area computers. Our products operate from outdoor extreme heat and cold environments to controlled indoor environments -- wherever hazardous materials such as gases may be present. If certifications such as ATEX, NEC 508, Class I, Division 1, Ex, CE, CENELEC and IEC are requirements for your industrial computer needs, then Computer Dynamics has your solution. If your manufacturing environment is in a hazardous area, please call our Applications and Sales Specialists to help you with your current projects.

Product Specifications

Survivor-Ruffneck

ATEX, ZONE 1, Explosion Proof Computer -- No Purge Required



The Survivor-Ruffneck sunlight-readable computer is explosion proof and ruggedized for use in virtually any environment. Along with an elaborate thermal management system, it sports a NEMA 4 environmentally sealed aluminum fabricated enclosure with corrosion resistance. Based on a single board computer with an Intel Pentium M 1.6 GHz processor, the unit can be configured with up to 2 GB DDRAM. The Survivor-Ruffneck offers three (3) network options including wireless Ethernet through PCMCIA expansion, and features Watchdog timer and software dimming.

To provide sunlight readability with minimal temperature rise, the 15" AMTFT LCD utilizes passive enhancements. Viewing enhancement filters are included to reduce sunlight loading. For reliable operation, an impact-resistant near field imaging (NFI) touchscreen with anti-glare and scratch resistant screen is standard.

Front panel indicators provide status LED for power and heating system status.

Specifications

- Dimensions 19.7" x 17.6" x 5.8" (WxHxD)
500.4 mm x 447.0 mm x 147.3 mm
- Weight 47 lbs. without yoke
- Display 15" 1024x768 256k color AMTFT LCD; sunlight readable
- Viewing area 12" x 9" (WxH), 15" diagonal
305 mm x 229 mm
- Touchscreen Near field imaging (NFI) with anti-glare and scratch resistance
- CPU Pentium M 1.6 GHz processor
- Memory Up to 2 GB DDRAM
- Ethernet On-board 10/100BaseT, Dual Ethernet
- Hard drive 40G hard drive (minimum)
- Flash disk CompactFlash
- Environmental Thermal management heaters for -40°C operation
- Power 90 - 260 VAC auto-ranging, 47 - 63 Hz
- Shock 5G 11msec operational, 20G 11msec non-operational
- Vibration 10 - 500 Hz, .012 in 10 - 57 Hz 2G 57 - 500 Hz
- Temperature
 - Operating -20° to +50°C
 - Storage -50° to +70°C
- O/S compatibility Windows 9x, 2000, NTE, XP
- Compliance Class I, Division 1; CE; UL; CSA; ATEX Zone 1 (without purge), EExd IIC T4

Options

- Mount Yoke, pedestal or rear
- Ethernet Fiber optic 10/100BaseT; wireless with approved antenna

Product Specifications

Wolverine

Ruggedization in a Small Package



The Wolverine sunlight readable computer is HAZLOC approved and ruggedized for use in virtually any environment. It sports a NEMA 4 environmentally sealed enclosure with corrosion resistance. Based on a single board computer with an Intel Pentium M 1.6 GHz processor, the unit can be configured with up to 2 GB DDRAM. The Wolverine offers two (2) network options including wireless Ethernet through PCMCIA expansion, field removable hard drive, and features Watchdog timer and dimming control.

To provide sunlight readability with minimal temperature rise, the 15" AMTFT LCD utilizes passive enhancements. Viewing enhancement filters are included to reduce sunlight loading. For reliable operation, an impact-resistant Near Field Imaging (NFI) touchscreen with anti-glare and scratch resistant screen is standard.

Built-in UPS provides up to 20 minutes operational time if power is lost.

Specifications

- Dimensions 15.9" x 13.75" x 4.48" (WxHxD)
403 mm x 349 mm x 114 mm
- Display 15" 1024x768, 256k color AMTFT LCD;
Sunlight Readable
- Viewing area 12" (W) x 9" (H), 15" diagonal
305 mm x 229 mm
- CPU Pentium M 1.6 GHz processor
- Memory Up to 2 GB DDRAM
- Touchscreen Near field imaging (NFI) with anti-glare and
scratch resistance
- Ethernet Onboard 10/100BaseT
- Hard drive 40 GB hard drive (minimum); field remov-
able
- Flash Disk Compact Flash
- Expansion PCMCIA with field access
- Weight 28 lbs.
- Mount Rear mount
- Power 18 - 30 VDC
- Shock 40G pulse
- Vibration 28G peak, random
- Temperature
 - Operating 0° - 50°C
 - Storage -40° to +70°C
- O/S compatibility Windows 2000, NTE, 9x, XP
- Compliance Class I, Division 2, Zone 2, CE, UL,
ATEX 3, NEMA 4

Options

- Mount Panel or yoke mount
- Ethernet Wireless
- I/O cover Conduit cover with glands to seal I/O
connections for NEMA 4 compliance
- Power 100 - 240 VAC auto-ranging, 47 - 63 Hz

Product Specifications

Survivor-WildCat

ATEX 3, ZONE 2, Class I, Division 2* HAZLOC-Approved Computer



The Survivor-WildCat sunlight-readable computer is HAZLOC approved and ruggedized for use in virtually any environment. Along with an elaborate thermal management system, it sports a NEMA 4 environmentally sealed aluminum fabricated enclosure with corrosion resistance. Based on our SBC-PiII single board computer with an Intel Pentium III 1 GHz processor, 512M SDRAM with three (3) network options including wireless Ethernet through PCMCIA expansion, Watchdog timer, automatic dimming and IRDA, this system is unparalleled in the industry.

To provide sunlight readability with minimal temperature rise, the 15" AMTFT LCD utilizes Computer Dynamics' backlighting system. Viewing enhancement filters are included to reduce sunlight loading. For reliable operation, an impact-resistant near field imaging (NFI) touchscreen with anti-glare and scratch resistant screen is standard.

Front panel indicators provide status LEDs for thermal management heaters, hard drive activity, network, and two (2) user-defined indicators.

Specifications

- Dimensions 16.9" x 19.8" x 8.1" (WxHxD)
429 mm x 502 mm x 205 mm
- Weight 45 lbs. without yoke
- Display 15" 1024x768 256k color AMTFT LCD; Ultra-HiBrite

- Viewing area 12" x 9" (WxH), 15" diagonal
305 mm x 229 mm
- Touchscreen Near field imaging (NFI) with anti-glare and scratch resistance
- CPU 1 GHz Intel Pentium III processor
- Memory Up to 512M SDRAM
- Ethernet On-board 10/100BaseT, optional fiber optic, wireless, RJ-45 or coax with lightning/surge arrestor
- Hard drive 40G hard drive (minimum)
- Flash disk CompactFlash, ATA, DiskOnChip
- PCMCIA Two type II PCMCIA expansion slots; wireless Ethernet approved
- Keyboard/mouse External PS/2 keyboard/mouse ports; removable access cover and safety retainer
- Serial ports Two RS-232
- PC/104 PC/104 expansion
- Environmental Thermal management heaters with status light indicator for -40°C operation
- Power 90 - 260 VAC auto-ranging, 47 - 63 Hz, 7A max.
- Shock 5G 11msec operational, 20G 11msec non-operational
- Vibration 10 - 500 Hz, .012 in 10 - 57 Hz 2G 57 - 500 Hz
- Temperature -40° to 50°C (operating)
-50° to 70°C (storage)
- O/S compatibility Windows 9x, 2000, NTE, Linux, XP
- Compliance Class I, Division 2, Group A, B, C, D; Temp Code T4A; Zone 1 (with purge), Zone 2; CE; UL; CSA; ATEX
- Accessories Sunvisor for high ambient conditions and screen protection during transportation

Options

- Mount Yoke, pedestal or rear
- Ethernet Fiber optic 10/100BaseT
- Alarm 100 dB alarm horn

*Class I, Division 1 with purge.

Thin Client & Embedded Systems

PAC-Xscale

With a 5.7" color TFT display, the PAC-Xscale (our smallest flat panel computer) requires a minimum amount of space to perform and offers versatility and durability to meet application requirements in any environment.



PAC-Xscale-12

With a 12.1" color TFT display, the PAC-Xscale-12 meets the needs of applications requiring a larger, higher resolution display yet still offers versatility and durability to meet application requirements in any environment.



DisplayPac-ARM

The DisplayPac-ARM embedded, sunlight-readable flat panel computers provide maximum reliability, extended temperature range and low-power operation.



Embedded systems are typically defined as computers that operate one single application. Thin Clients are a means to execute centrally located programs from a remote location. These types of systems usually do not require the latest and greatest multimedia processing powerhouses that our other industrial computer systems offer. Computer Dynamics' selection of Thin Client and Embedded Systems can help you reduce your system costs, while providing scalability and flexibility in your project needs. We can help you with OEM custom embedded system designs with any of our computers, displays and touchscreens. Whether you require just the embedded computer boards or systems with displays and touchscreens, our Applications and Sales Specialists can help you with your project design needs.

Product Specifications

PAC-Xscale

5.7" Flat Panel Computer with User Expandable Memory



The PAC-Xscale is our smallest flat panel computer; yet it offers versatility and durability to meet application requirements in any environment. With a 5.7" active matrix color TFT display, the PAC-Xscale requires a minimum amount of space to perform. It can be utilized for applications involving data collecting and trending to system security and alarming. The PAC-Xscale includes CompactFlash, expandable memory and communication expansion cards. It carries UL; Class 1, Division 2, Groups A, B, C, D; ATEX Class 1 Zone 2; and CE Mark approvals.

Specifications

- Dimensions 6.15" x 4.90" x 2.76" (WxHxD)
156.2 mm x 124.6 mm x 70.1 mm
- Display 5.7" 320x240 256k color* AMTFT LCD
- CPU Intel Xscale
- Memory 32M SDRAM (user expandable to 96M with addition of 64M DIMM); 32M Flash; 512K NV RAM
- Touchscreen Resistive
- Ethernet One port 10/100 Mbits/sec; 10BaseT/100BaseTX (auto-detect/auto-switch); Full/Half-duplex, auto-select
- Serial ports COM1: RS-232/RS-485; COM2: RS-232
- Expansion One slot
- Memory card CompactFlash
- USB ports Two USB 1.1 ports
- Environmental NEMA 4/4X/12
- Temperature 0° - 60°C (operating)
- Humidity 0 - 95% non-condensing
- Fieldbus support AnyBus-S: Ethernet, Series 90-30 I/O, DeviceNet, Profibus, Genius, Modbus Plus
- Agency approvals UL Class I, Division 2, Groups A, B, C, D; CE Mark; ATEX-Class I Zone 2
- Indicators LEDs One bi-color (PWR/Sys); one bi-color (user-defined); two on Ethernet connectors
- Operating system Windows CE.NET
- Power 10.8 - 30.0 VDC; less than 24W

Ordering Information

PAC-XS6-<DRAM>

**Video hardware/firmware limits to 65k colors*

Product Specifications

PAC-Xscale-12

12.1" Flat Panel Computer with User Expandable Memory



In addition to the 5.7" unit, the PAC-Xscale family includes a 12.1" system for applications requiring a larger, higher resolution display. It can be utilized for applications involving data collecting and trending to system security and alarming. The PAC-Xscale-12 offers CompactFlash, expandable memory and communication expansion cards. It carries UL; Class 1, Division 2, Groups A, B, C, D; ATEX Class 1 Zone 2; and CE Mark approvals.

Specifications

- Dimensions 11.85" x 8.93" x 2.37" (WxHxD)
301.1 mm x 226.8 mm x 60.1 mm
- Display 12.1" 800x600 32k color AMTFT LCD
- CPU Intel Xscale
- Memory 32M SDRAM (user expandable to 96M with addition of 64M DIMM); 32M Flash; 512K NV RAM
- Touchscreen Resistive
- Ethernet One port 10/100 Mbits/sec; 10BaseT/100BaseTX (auto-detect/auto-switch); one port 10BaseT; Full/Half-duplex, auto-select
COM1: RS-232/RS-485; COM2: RS-232
- Serial ports One slot
- Expansion CompactFlash
- Memory card Two USB 1.1 ports
- USB ports NEMA 4/4X/12
- Environmental 0° - 50°C (operating)
- Temperature 0 - 95% non-condensing
- Humidity AnyBus-S: Ethernet, Series 90-30 I/O, DeviceNet, Profibus, Genius, Modbus Plus
- Fieldbus support UL Class I, Division 2, Groups A, B, C, D; CE Mark; ATEX-Class I Zone 2
- Agency approvals One bi-color (PWR/Sys); one bi-color (user-defined); two on Ethernet connectors
- Indicators LEDs Windows CE.NET
- Operating system 9.6 - 30.0 VDC; less than 24W
- Power

Ordering Information

PAC-XS12-<DRAM>

Product Specifications

DisplayPac-ARM

Flat Panel Computing Platform for Embedded Operating Systems



The DisplayPac-ARM is a family of products designed specifically for embedded operating systems. Powered by an Intel StrongARM SA-1110 206 MHz single board computer, the systems offer low-power operation while providing high-powered processing. In addition to 64M Synchronous DRAM and 32M Flash memory, the systems provide a type II PCMCIA socket for additional storage capacity or I/O modules such as GPS or wireless Ethernet. A CompactFlash socket provides yet a third option for storage media.

The product family offers a variety of display options from 6.4" to 12.1". Typical configurations draw less than 15 Watts total power, making this an ideal product where low power or battery operation is needed. Low power means less heat is generated, allowing the product to operate in more extreme environments. Other benefits from using the DisplayPac-ARM family: simple field software upgrades; no moving parts yield higher MTBF; software development tools and Windows CE drivers mean faster time-to-market; power management allows extended life in battery-operated applications; connectivity maximized through standard I/O features; execute applications from on-board Flash or removable media. Custom configurations are available in OEM quantities.

I/O Features

- Seven (7) serial ports
- Analog inputs
- 10BaseT Ethernet
- PS/2 mouse
- PCMCIA type II slot
- Speaker and microphone
- USB host and slave
- Digital I/O
- PS/2 keyboard
- CAN Bus
- CompactFlash socket
- IRDA

Options

- Sunlight readable LCDs
- Custom enclosures
- Other touchscreen options
- Environmental controls for extended temperature ranges
- PCMCIA modules
- CompactFlash modules
- Windows CE or LINUX
- In volume applications, board can be customized

Typical Power Requirements

- +5V, 1A
- +12V, 0.75A
- -12V (If using serial devices requiring -12V)

Operating Temperature

- 0° - 50°C
- -40° to 70°C optional (-40°C obtained with heaters; 70°C available with select displays)

Ordering Information

LCD

Call for quarter VGA or other non-standard resolutions.

-SH29	6.4" VGA
-H929	6.4" VGA, 900 nit
-SH27	10.4" VGA
-H927	10.4" VGA, 900 nit
-SS4	10.4" SVGA
-H926	10.4" SVGA, 600/800 nit
-SH39	12.1" SVGA
-H939	12.1" SVGA, 900 nit

Touchscreen

-DY1	6.4" resistive
-DY2	10.4" resistive
-DY3	12.1" resistive

Options

Call for your specific application needs.

-PM	Panel-mount plate
-CE	Windows CE operating system
-LNX	Linux operating system
-CFxx	CompactFlash size "xx"

PCMCIA Modules

Other modules are being qualified and added to our support list.

-GPS	GPS device
-WENT	Wireless Ethernet device

Industrial & OEM Flat Panel Monitors

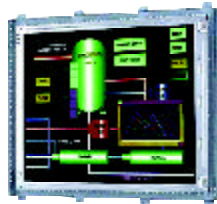
VAMP-WN Panel-Mount

Panel-mount flat panel monitors connect to any standard VGA analog source and can be configured to accept NTSC/PAL/S-Video/DVI/Composite video signals. NEMA 4/4X rating on front surface.



VAMP-WN Open-Frame

OEM flat panel monitors connect to any standard VGA analog source and can be configured to accept NTSC/PAL/S-Video/DVI/Composite video signals.



VAMP-SlimVista-19

VAMP-SlimVista-19 is an ultra-thin flat panel monitor featuring a 19" SXGA 16.7M color TFT LCD with CE, UL, CSA, TUV/GS, FCC-B and MPRII certifications.



VAMP-SlimVista-17

VAMP-SlimVista-17 is an ultra-thin flat panel monitor featuring a 17" SXGA 16.7M color TFT LCD with CE, C-UL, TUV/GS, FCC, MPRII, EPA, NUTEK, D, N, S, F, TCO certifications.



VAMP-SlimVista-15

VAMP-SlimVista-15 is a versatile, ultra-thin flat panel monitor housed in a durable plastic enclosure that offers desktop or swing arm mounting.



VAMP-LMV10

VAMP-LMV10 monitor features a 10.4" active matrix color TFT LCD with resistive touchscreen in a rugged, compact, attractive housing.



VAMP3-SlimVista

VAMP3-SlimVista features a 15" display and resistive touchscreen, is less than 2" thick, weighs 11 pounds and carries 601/2601 Medical Safety, FCC-B and CISPR 11 certifications.



Monitors are the most interactive part of your system design. So why not make them the most reliable with Computer Dynamics' industrial flat panel monitors? Our monitors are available in various sizes and enclosures to fit most any application. Computer Dynamics pioneered the ability to drive flat panels with a PC's VGA signal (circa 1992). Our experience and technology knowledge cannot be purchased from any other source. Call our Applications and Sales Specialists to help you with your project design needs.

Product Specifications

VAMP-WN Series

Panel-Mount and Open-Frame Flat Panel Monitors



The VAMP-WN Series of flat panel monitors features several choices of active matrix color TFT LCDs and optional touchscreens. With an optional panel-mount plate, the VAMP-WN Series has a NEMA 4/4X rating on the front surface and is ready to be panel mounted to your equipment (mounting studs are included). Bezels are constructed of painted metal with a fingerprint-proof, clear plastic overlay. The anodized aluminum rear cover is vented for heat dissipation and provides protection for all electronics. The VAMP-WN Series accepts PC-compatible VGA signals from any standard video source. Sunlight-readable displays are also available. Call for details.

Specifications

• Display	6.4"	640x480 256k color; 300 nit
	8.4"	640x480 256k color; 230 nit
	10.4"	640x480 256k color; 350 nit
	12.1"	800x600 256k color; 340 nit
	15"	1024x768 256k color; 250 nit
	17"	1280x1024 16.7M color; 250 nit
	19"	1280x1024 16.7M color; 250 nit
• Contrast ratio	120:1	(6.4")
	200:1	(8.4")
	180:1	(10.4")
	300:1	(12.1")
	350:1	(15" XGA)
	500:1	(17", 19")
• Viewing angle	6.4"	-/+55° X axis; -10° to 35° Y axis
	8.4"	-/+40° X axis; -10° to 30° Y axis
	10.4"	-/+55° X axis; -40° to 15° Y axis
	12.1"	-20° to 40° X axis; -/+50° Y axis
	15"	-/+60° X axis; -45° to 55° Y axis
	17"	-/+85° X axis; -/+85° Y axis
	19"	-/+85° X axis; -/+85° Y axis
• Temp.	0° - 50°C (operating); -20° to 60°C (storage)	

Video

- Signal connector 15-pin D-sub
- Input Standard analog RGB
- User control OSD (auto-saving)
- Plug & Play VESA DDC 1/2B
- Power External 100 - 240 VAC universal; Consumption: 33W typical, normal operation
- Power mgmt. VESA DPMS compliant

Options

- HiBrite displays From 700 nit to 1,000 nit available
- Touchscreen
 - R Resistive
 - C Capacitive (excludes 6.4")
 - S Surface Acoustic Wave (15", 17", 19")
- Video
 - SV S-Video
 - COMP Composite Synch
 - NTSC NTSC
 - PAL PAL
 - D DVI input (15", 17", 19" models)
- Panel mount
 - TPM2 NEMA 4 panel-mount plate (8.4")
 - TPM4 NEMA 4 panel-mount plate (12.1")
 - TPM6 NEMA 4 panel-mount plate (15")
 - TPM7 NEMA 4 panel-mount plate (17")
 - TPM9 NEMA 4 panel-mount plate (19")
 - TPM1-SS NEMA 4X panel-mount plate (12.1", 15")
- RM Rack mount (12.1", 15", 17", 19")

Ordering Information

Specifications subject to change without notice.

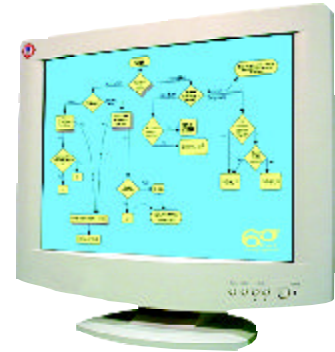
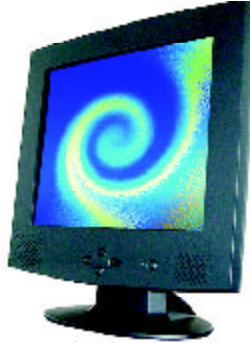
Varying combinations of product options are available by choosing from the options listed above. If options are not necessary, use a base part number (for example, VAMP-WN06M).

Call your Computer Dynamics Applications Engineer for mechanicals.

Product Specifications

VAMP-SlimVista

Flat Panel Monitor Family Offers Agency Approvals



The SlimVista family consists of ultra-thin flat panel monitors featuring a 19" SXGA 16.7M color TFT LCD with a 170 degree viewing angle, 17.1" SXGA 16.7M color TFT LCD with optional resistive, capacitive or surface acoustic wave touchscreen or a 15" XGA color TFT LCD with resistive touchscreen. The attractive systems are housed in durable plastic enclosures that can be used on the desktop, wall or swing arm mounted. VAMP-SlimVistas are ready for immediate operation in a variety of applications including end-user systems, as they carry UL (or C-UL), CE and FCC approvals. The VAMP-SlimVista-17 and -19 also carry TUV/GS, MPR II, EPA, NUTEK, D, N, S, F, TCO approvals (optional). The units interface with any standard VGA/SVGA/XGA analog video signal and have auto-adjust, -configuration, -brightness, -contrast, landscape/portrait function, RGB color and system information.

19" System Specifications

- Display 19.0" 1280x1024 16.7M color TFT LCD; 250 nit; 500:1 contrast ratio
- Viewing angle +/-85° X and Y axis
- Dimensions 20.1" x 19.7" x 8.27" (WxHxD)
510 mm x 500 mm x 210 mm
- Front controls Power, Menu, Select, Adjustment (+,-)
- OSD Auto-configuration; Brightness; Contrast; Clock; Phase; H-, V- and OSD-position
- Plug & Play DDC2B compatible
- Power 55W; VESA DPMS compatible
- Power supply 100 - 240 VAC, 50 - 60 Hz input
- Scanning freq. Horizontal sync.: 31.5 KHz to 80 KHz
Vertical sync.: 56 Hz to 75 Hz
1280x1024 @ 75 Hz
- System weight 26.5 lbs (12 kg)
- Temperature 0° - 50°C (operating)
-20° - 65°C (storage)
- Humidity 10 - 80% (no condensation)
- Certification UL, CSA, TUV/GS, CE, FCC-B, MPR II, TCO'99 (optional)

19" Option

- Touchscreen Resistive

19" Ordering Information

VAMP-SlimVista-19

17" System Specifications

- Display 17.1" 1280x1024 16.7M color AMTFT; 250 nit; 350:1 contrast ratio
- Viewing angle +/-80° X axis; -80° to 55° Y axis
- Dimensions 16.9" x 17.5" x 8.1" (WxHxD)
429 mm x 445 mm x 206 mm
- Front controls Power on/off with LED, Menu, Select, Adjustment (+,-), P-I-P, Zoom-in/Zoom-out
- OSD Brightness, Contrast, Clock, Phase, Auto-tune, H-position, V-position, RGB color drive, OSD format, Volume
- Speaker Internal 2W/per channel driver
- Power Embedded power system, universal 90 - 264 VAC input
- Temperature 0° - 50°C (operating)
-20° - 65°C (storage)
- Humidity 10 - 80% non-condensing

17" Options

- Touchscreen Resistive, capacitive, SAW
- Mounting Adjustable arm

17" Ordering Information

VAMP-SlimVista-17-Options

15" System Specifications

- Display 15" 1024x768 16.7M color AMTFT LCD
- Brightness 250 nit
- Touchscreen Resistive; utilizes RS-232 controller
- Power supply External 100 - 240 VAC, 50 - 60 Hz
- Mounting Tabletop stand; 75 mm VESA with tabletop stand removed

15" Options

- Color Beige or black
- Audio One watt per channel
- Dimensions 16" x 15.5" x 5" (WxHxD)
406 mm x 394 mm x 127 mm
- System weight 5.3 kg, 11.66 lbs.

15" Ordering Information

SlimVista-Bk
SlimVista-Bg

Specifications may change without notice due to component changes.

Product Specifications

VAMP-LMV10

10.4" Flat Panel Monitor Ultra-Slim Design



The VAMP-LMV10 provides a compact, yet highly capable, touchscreen monitor solution. The system fits into an 11" x 8.5" x 1.36" (WxHxD) envelope for applications where space is a premium. Weighing only 4.25 pounds, the system also features a convenient all-in-one cable with inputs for VGA (DB15), serial (DB9 for touchscreen), and 12V only power. These units also conveniently fit into existing applications utilizing the Datalux LMV10™ series monitors. If you need a small, lightweight, durable 10.4" touchscreen display, the VAMP-LMV10 is the answer. 12" monitor is available as a special option. Please call for specifications.

Display Specifications

- Dimensions 11" x 8.5" x 1.36" (WxHxD)
279.4 mm x 215.9 mm x 34.54 mm
- Display 10.4" 640x480 256k color AMTFT LCD
- Brightness 200 nit
- Standard input Standard VGA 640x480 analog video signals (HD15 connector)

Touchscreen Specification

- Type 5-wire analog resistive touchscreen overlay; MicroTouch 5-wire compatible touchscreen controller

System Specifications

- Cable All-in-one power, video, touchscreen data cable
- Power supply 12V power input
- Serial port RS-232 DB9 for touchscreen interface
- Bezel Membrane overlay with front access contrast and brightness controls
- System weight 4.25 lbs.
- Temperature 0° - 50°C (operating)

Option

- Power supply 12 VAC output

Ordering Information

VAMP-LMV10-Option

Specifications may change without notice due to component changes.

Product Specifications

VAMP3-SlimVista

15" Flat Panel Monitor with 601/2601 Medical Safety, FCC-B and CISPR 11 Approvals



The VAMP3-SlimVista is an ultra-thin flat panel monitor featuring a 15" XGA (1024x768) color TFT LCD and resistive touchscreen. At less than two inches thick and only eleven pounds, the VAMP3-SlimVista is light enough to attach easily to a mounting arm or wall. The unit is ready for immediate operation in a variety of applications including medical products, as it carries 601/2601 Medical Safety, FCC-B and CISPR 11 certification. Simple to connect, the VAMP3-SlimVista requires only one cable, instead of the normal three, for video, RS-232 and power.

The VAMP3-SlimVista interfaces with any standard analog signal, as well as with non-VGA video signals often used with workstations (composite and synch-on-green) and NTSC/PAL signals. The system also features our SmartSize™ capability to take lower resolution video inputs and smoothly expand the image to fill the entire 1024x768 screen.

Display Specifications

- Dimensions 15.5" x 13" x 1.75" (WxHxD)
394 mm x 330 mm x 45 mm
- Display 15" 1024x768 256k color AMTFT LCD
- Viewing area 12" x 9" (WxH), 15" diagonal
305 mm x 229 mm
- Touchscreen Resistive
- Linear expansion Resizing to fill entire screen for:
NTSC/Video/PAL
640x350 mode
640x400 mode
640x480 mode
800x600 mode

System Specifications

- Electronics LCD and backlight inverter; analog-to-digital-video converter board; standard male DB15 video interface; RS-232 touchscreen interface
- Cable 6' video cable provided to connect to CRT controller; other sizes available
- System weight 11 lbs.
- Agency approvals 601/2601 Medical Safety, FCC-B, CISPR 11

Option

- Signal
 - RGB Standard analog RGB
 - NTSC NTSC/S-Video/PAL
 - SOG Synch-on-Green
 - COMP Composite synch

Ordering Information

VAMP3-SlimVista-Option

Specifications may change without notice due to component changes.

Industrial & Rack-Mount Computers and Monitors

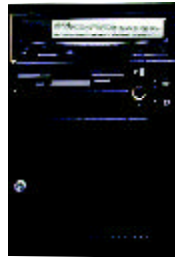
Nd61400

Available in 4U rack-mount configuration, the Nd61400 features choice of 1.2 GHz Pentium III or 2.4 GHz P4 CPU plugged into a 14-slot backplane with eight ISA, four PCI and two PICMG slots.



Nd60501

Available in desktop or wall-mount configuration, this industrial computer features either a 1.2 GHz Pentium III or 2.4 GHz P4 CPU plugged into a 6-slot backplane.



Nd61220 & Nd61120

Available in compact 2U or 1U rack-mount configuration with front accessible floppy, CD-ROM and removable hard drive, Nd61220 and Nd61120 feature either a 1.2 GHz Pentium III or 2.4 GHz P4 CPU plugged into a 6- or 3-slot backplane.



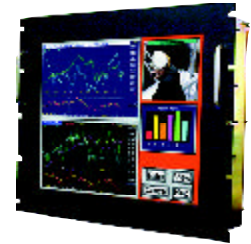
Nd-M17-KB Nd-M15-KB

Designed to fit in a 19" rack-mount chassis, the Nd-M17-KB and Nd-M15-KB are rugged, fully integrated color LCD drawer monitors with keyboard and PS/2 mouse pad.



ThinView-18-RM

Ready to be rack mounted to 19" rack-mount equipment, this flat panel monitor with resistive touchscreen features an 18.1" active matrix color TFT LCD and a NEMA 4 rating on the front surface.

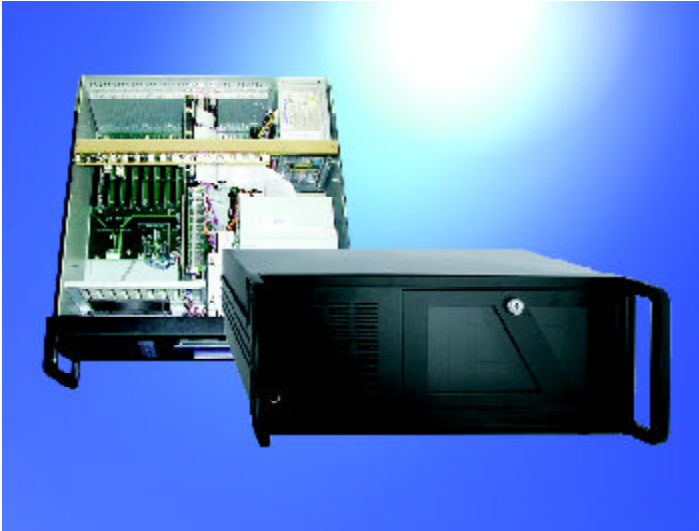


Computer Dynamics has recently released some of our most successful and proprietary computer systems to all industrial users. Our systems were designed for high volume users in demanding mission critical applications. These systems allow you to custom configure a variety of enclosures and computer horsepower to fit your requirements. Our systems are available with active and passive PCI Bus backplanes that also continue to support your legacy ISA cards. From small 2-4 slot systems to 4U and higher rack-mount systems, we provide the options that can complete your projects with the highest reliability. Whether or not you need a display, call our Applications and Sales Specialists to help you with your project design needs.

Product Specifications

Nd61400

4U Industrial Rack-Mount Computer Chassis



The Nd61400 industrial computer features choice of a 1.2 GHz Pentium III or 2.4 GHz P4 CPU plugged into a 14-slot backplane with eight (8) ISA, four (4) PCI and two (2) PICMG slots (other slot combinations are available). This industrial PC is intended for processor-intensive applications requiring high-reliability in an industrial environment. The Nd61400 is available in 4U rack mount configuration with front-accessible floppy, CD-ROM and removable hard drive.

This unit supports up to 512M of SDRAM on the PIII and up to 2G of SDRAM on the P4 option. System also includes VGA video, 10/100M bit Ethernet and the standard suite of PC I/O.

System Features

- CPU 1.2 GHz Pentium III or 2.4 GHz P4 PICMG slot CPU
- Memory Up to 512M of SDRAM on the PIII; up to 2G of SDRAM on the P4
- Drives Front mount, removable 20G hard drive; CD-ROM; floppy
- PC I/O 10/100BaseT Ethernet, on-board VGA controller, dual channel IDE (max 4 IDE devices), four USB ports (P4 only, PIII carries two), two serial ports, one parallel port, PS/2 mouse and keyboard, Watchdog timer

Specifications

- Backplane 14-slot with 8 ISA, 4 PCI and 2 PICMG slots; fan with front removable filter. Other slot combinations are available.
- Powersupply 250W, 300W, 400W (AT or ATX12V) or redundant power supplies
- Standard color Black or beige (PANTONE 414C)
- Construction Heavy duty cold-rolled steel
- Drive capacity Exposed three 5.25" drives and one 3.5" drive
- Cooling One built-in 78CFM fan with a removable filter
- Indicators Power on/off and HDD, both on front panel
- Controls Power on/off; system reset; keyboard lock - all on front panel
- Pre-punched Front: one mini DIN 5-pin keyboard (PS2 connector); Rear: one 25-pin
- Plug-in card clamping Height adjustable hold down clamps with rubber cushions
- System board PICMG SBC or ATX M/B (12" x 9.6" or 305 mm x 244 mm)
- Expansion 14-slot backplane
- Speaker One 0.25W speaker
- Temperature 0° - 50°C (operating)
- Dimension 19" x 17.7" x 7" (WxDxH)
482.6 mm x 450 mm x 177 mm

Options

- pp -PIII 1.2 GHz Pentium III
-P4 2.4 GHz P4
- mm -256M 256M SDRAM
-512M 512M SDRAM
-1GB Call (P4 system only)
-2GB Call (P4 system only)

Ordering Information

Nd61400-pp-mm

Specifications may change without notice due to component changes.

Product Specifications

Nd60501

6-Slot Industrial Computer



The Nd60501 industrial computer features either a 1.2 GHz Pentium III or 2.4 GHz P4 CPU plugged into a 6-slot backplane with four (4) PCI, one (1) ISA and one (1) PICMG slot. This industrial PC is intended for processor-intensive applications requiring high reliability in an industrial environment. The Nd60501 is available in desktop or wall-mount configuration with front-accessible floppy and CD-ROM.

This unit supports up to 512M of SDRAM on the PIII and up to 2G of SDRAM on the P4 option. System also includes VGA video, 10/100BaseT Ethernet and the standard suite of PC I/O.

System Features

- CPU 1.2 GHz Pentium III or 2.4 GHz P4 PICMG slot CPU
- Memory Up to 512M of SDRAM on the PIII; up to 2G of SDRAM on the P4
- Drives Front mount floppy and CD-ROM; hard drive internal or front access removable
- PC I/O 10/100BaseT Ethernet, on-board VGA controller, dual channel IDE (max 3 IDE devices), four USB ports (P4 only, PIII carries two), one serial port, one parallel port, PS/2 mouse and keyboard, Watchdog timer

Specifications

- Backplane 6-slot with four PCI, one ISA and one PICMG slots; fan with front removable filter
- Power supply 300W power supply with 110/220 VAC or 12 VDC / 24 VDC inputs
- Construction Heavy-duty cold-rolled steel
- Drive capacity Exposed one 5.25" drive and one 3.5" drive; one 3.5" drive internal
- Cooling One 9 cm ball-bearing fan (51CFM/each) with a removable filter
- Indicator Power on/off
- Controls Power on/off; system reset
- Pre-punched Front: one PS/2 5-pin keyboard; Rear: two 9-pin, one 25-pin SBC
- System board 6-slot backplane
- Expansion One 0.25W speaker
- Speaker 0° - 50°C (operating)
- Temperature 9.25" x 15.7" x 6.2" (WxDxH)
- Dimension 235 mm x 400 mm x 158 mm

Options

- pp -PIII 1.2 GHz Pentium III
-P4 2.4 GHz P4
- mm -256M 256M SDRAM
-512M 512M SDRAM
-1G 1 GB DDR memory (P4 only)
-2G 2 GB DDR memory (P4 only)
- Customization Please call, as these systems can be custom configured

Ordering Information

Nd60501-pp-mm

Specifications may change without notice due to component changes.

Product Specifications

Nd61220 & Nd61120

2U and 1U Compact Rack-Mount Industrial Computer Chassis



The Nd61220 and Nd61120 industrial computers feature either a 1.2 GHz Pentium III or 2.4 GHz P4 CPU plugged into a 6-slot backplane with four (4) PCI, one (1) ISA and one (1) PICMG slot (2U chassis) or a 3-slot backplane with two free slots for PCI expansion (1U chassis). These industrial PCs are intended for processor-intensive applications requiring high reliability in an industrial environment. The Nd61220 is available in compact 2U rack mount configuration with front-accessible floppy, CD-ROM and removable hard drive. The Nd61120 is available in compact 1U rack mount configuration.

These units support up to 512M of SDRAM on the PIII and up to 2G of SDRAM on the P4 option. System also includes VGA video, 10/100BaseT Ethernet and the standard suite of PC I/O.

Features

- CPU 1.2 GHz Pentium III or 2.4 GHz P4 PICMG slot CPU
- Memory Up to 512M of SDRAM on the PIII; up to 2G of SDRAM on the P4
- Drives Front mount, removable 20G hard drive; CD-ROM; floppy
- PC I/O 10/100BaseT Ethernet, on-board VGA controller, dual channel IDE (max 4 IDE devices), two USB ports, two serial ports, one parallel port, PS/2 mouse and keyboard, Watchdog timer

Specifications

- Chassis 2U rack-mount design in depth of 475 mm (18.7") [Nd61220]
1U rack-mount design in depth of 475 mm (18.7") [Nd61120]
- Backplane PICMG SBC structure with five free slots for expansion (2U chassis); two PCI slots for expansion (1U chassis)
- Standard color Black
- Construction Heavy-duty cold-rolled steel
- Drive capacity One slim-line CD-ROM; one 3.5" drive; one 5.25" drive; two internal 3.5" HDD
- Cooling Two 8 cm (42.5CFM/each) ball-bearing fans with a removable filter
- Indicators Power on/off; HDD; Temperature; Voltage and Fan - all on front panel
- Controls Power on/off; system reset; alarm reset - all on front panel
- Pre-punched Front: two USB; one PS/2 (keyboard and mouse - mouse in rear on P4 systems); Rear: one 9-pin
- System board PICMG SBC with Pentium 4 processor
- Expansion Four PCI and one ISA
- Temperature 0° - 50°C (operating)
- Dimension 19" x 18.7" x 1.75" (WxDxH)
482.6 mm x 475 mm x 44 mm

Options

- pp -PIII 1.2 GHz Pentium III
-P4 2.4 GHz P4
- mm -256M 256M SDRAM
-512M 512M SDRAM
-1G Call (P4 system only)
-2G Call (P4 system only)
- USB ports Two additional USB ports in rear (P4 system only)
- Customization Please call, as these systems can be custom configured

Ordering Information

Nd61220-pp-mm

Nd61120-pp-mm

Specifications may change without notice due to component changes.

Product Specifications

Nd-M17-KB & Nd-M15-KB

1U Rack-Mount Monitor with 17" or 15" LCD, Keyboard Drawer and Optional 8-port KVM Switch



The Nd-M17-KB and Nd-M15-KB units are rugged, fully integrated 17" and 15.1" color LCD drawer monitors with keyboard and PS/2 mouse pad designed to fit in a 19" rack-mount chassis. When fully stowed, the systems measure a mere 1.75" (1U) in height. The large 17" and 15.1" color flat panel LCD displays feature a maximum resolution of 1280x1024 and 1024x768, respectively, while achieving true color graphics. Interfacing to the computer is easy with the supplied cables for keyboard, video and mouse. Their rugged and slim design make these units ideal for military and telecommunications applications.

Specifications

- Display
 - 15.1" 1024x768 color AMTFT display; 250 nit brightness; 16.7M colors
 - 17" 1280x1024 color AMTFT display; 250 nit brightness; 16.7M colors
- Contrast ratio 350:1
- Pixel pitch .297 x .297 mm
- Viewing angle +/-80° X and Y axis
- Supported video modes
 - VGA 640x350 (70 Hz)
 - VGA 720x400 (70 Hz)
 - VGA 640x480 (60/72/75 Hz)
 - SVGA 800x600 (60/72/75 Hz)
 - XGA 1024x768 (60/72/75 Hz)
 - 1280x1024 (17" only)
 - Mac 832x624, 75 Hz (15" only)

- Input Analog RGB .7V P-P via DB15 (cable supplied)
- Adjustments Front-mounted controls for power, selections for OSD features
- Plug & Play DDC1/2B
- Energy saving EPA Energy Star, VESA DPMS
- OSD Auto-adjustment, Contrast, Brightness, Clock, Phase, H-position, V-position, Color, Temperature, Load default
- Keyboard 105 keys; cable included
- Mouse Touch Pad PS/2 compatible with cable
- Power Universal 90 - 240V, 12V @ 35W (1W in power saving mode)

Mechanical

- Dimensions 19" x 1.7" x 20.28" (WxHxD)
482.6 mm x 43.18 mm x 515.11 mm
- Weight 13 Kg

Environmental

- Temperature
 - Operating 0° - 45°C
 - Storage -20° to 60°C
- Humidity
 - 10 - 85% non-condensing (operating)
 - 10 - 95% non-condensing (storage)
- Agency approvals FCC-A, CE, UL

Option

- -KVM 8-port KVM switch, one PS/2 keyboard, one PS/2 mouse, one video per port

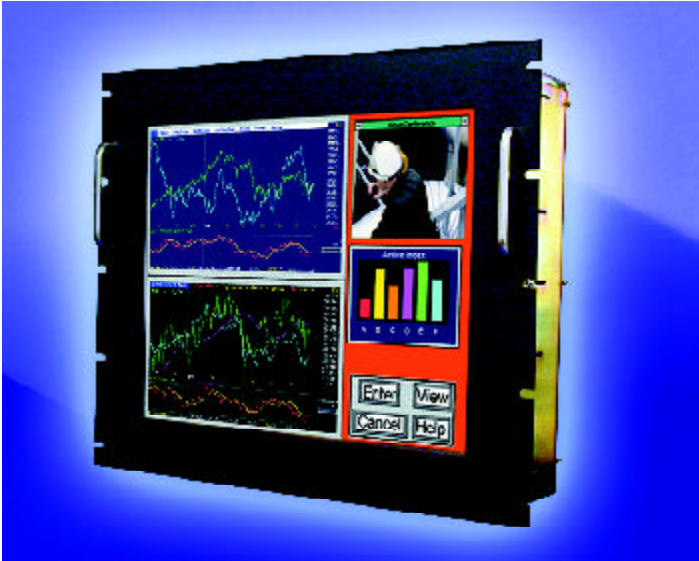
Ordering Information

- Nd-M17-KB-Option
- Nd-M15-KB-Option

Product Specifications

ThinView-18-RM

18.1" Rack-Mount Flat Panel Monitor



The ThinView-18-RM flat panel monitor with an integrated resistive touchscreen features an 18.1" active matrix color TFT LCD. It has a NEMA 4 rating on the front surface, with the front bezel ready to be rack mounted to your 19" rack-mount equipment. The rack-mount bezel is constructed of powder coated metal with a fingerprint-proof, clear plastic overlay. The anodized aluminum rear cover is vented for heat dissipation and provides protection for all electronics.

The ThinView-18-RM accepts PC-compatible VGA signals from any standard video source. It also features our SmartSize™ capability to display lower resolution images on higher resolution screens, and to handle interlaced, full-motion video and progressively scanned computer graphics.

17" and 15" monitor sizes are also available in rack-mount configurations. See Industrial & OEM Flat Panel Monitors section.

Display Specifications

- Display -SH46 18.1" 1280x1024 16.7M color AMTFT LCD
- Viewing angle -/+85° X and Y axis
- Brightness 235 nit
- Standard input Standard analog RGB - DB15 interface
- Linear expansion Seamless expansion to fill entire screen for NTSC/S-Video/PAL:
 - 640x350
 - 640x400
 - 640x480
 - 800x600
 - 1024x768

Touchscreen Specifications

- Type Analog resistive
- Resolution 4096x4096, >100,000 touchpoints/in.²
- MTBF (Sensor) 35 million touches/spot
- O/S driver Windows 95, 98, 2000, NT
- Stylus All types
- Transmissivity 75%

System Specifications

- Temperature
 - Operating 0° - 50°C
 - Storage -20° to 60°C
- Power 110/220V auto-sensing
- Dimensions 19" x 15.75" x 4.81" (WxHxD)
482.6 mm x 400.05 mm x 122.17 mm
- Weight 19 lbs.

Options

- UHB -H946 Ultra-HiBrite 900 nit or greater display
- Input signals -NTSC NTSC/S-Video/PAL
-SOG Synch-on-Green
-COMP Composite Synch
- Power DC options from 12 - 36 VDC; call for other voltages

Ordering Information

ThinView-18-RM-<Display>-Options

Military, Marine, & Custom Systems

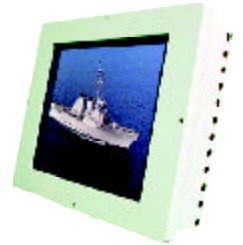
SentinelSeries

The Sentinel Series, anti-reflective and anti-glare coated 15", 19", and 21" rugged flat panel monitors, supports the following video signals: VGA, SOG, NTSC, RS170, PAL, S-video, and DVI.



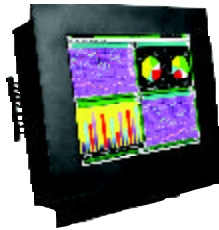
MPAC-10

MPAC-10 features a 486-level processor board, 10.4" VGA LCD, and an infrared touchscreen contained in a panel-mount enclosure.



MPAC-18

MPAC-18 is a feature-packed, rugged computer designed for military applications, as well as applications requiring high-shock and high-vibration resistance.



Computer Dynamics' long term commitment to its customers is to provide cutting edge products for the lifetime of their projects. This commitment is most evident in our custom designed systems. Many of our products are seen only by the specific customers for whom they were designed. Our 6 Sigma Design experience and quality systems allow our engineering team to be an extension of yours. We have experience designing custom systems for Military, Marine, Oil and Gas, Pharmaceutical, Medical, and Transportation industries and markets. With custom enclosures, computers, embedded systems, displays and touchscreens, our Applications and Sales Specialists can help you with any of your custom or semi-custom requirements. Don't delay, call them today!

Product Specifications

Sentinel Series

15", 19" and 21" Rugged Flat Panel Monitors Designed for Military Applications



The Sentinel Series, anti-reflective and anti-glare coated 15", 19" and 21" rugged flat panel monitors, supports the following video signals: VGA, SOG, NTSC, RS170, PAL, S-video, and DVI. All units allow picture-in-picture video (PAL/NTSC) display overlay on a PC background with multiple window size options. Mechanical design and environmental advancements exceed the most demanding military and industrial specifications. Able to withstand and operate in harsh environments, the Sentinel Series monitors have been designed, tested and certified to stringent military standards for shock, vibration, EMI and environmental.

Display Specifications

- Dimensions
15" – 15.92" x 12.92" x 3.41" (WxHxD)
404.4 mm x 328.2 mm x 86.6 mm
19" – 18.84" x 15.92" x 4.51"
478.5 mm x 404.4 mm x 114.5 mm
21" – 21.11" x 17.14" x 4.6"
536.2 mm x 435.4 mm x 116.8 mm
- Display
15" – 1024x768 color AMTFT LCD
19" – 1280x1024 color AMTFT LCD
21" – 1600x1200 color AMTFT LCD
- Enhancements
Anti-glare/anti-reflective coating

System Specifications

- Mounting
Panel; rack (customization may be necessary on 19" and 21" for rack mount configuration)
- OSD controls
Controlled by membrane keypad on rear of unit.
- Weight
15" – 13 lbs
19" – 20 lbs
21" – 24 lbs
- Mechanical
Front: black powder coated aluminum
Rear: yellow chromate aluminum
- Power
18 - 36 VDC ground isolated; 90 - 264 VAC
- Video signals
VGA, SOG, and DVI-D; NTSC; RS170
- MTTR
Field replaceable power supply; field replaceable backlights (without panel removal)
- Temperature
0° - 50°C (operating)
-25° - 60°C (storage)
- Environmental
NEMA 4X on front surface

Compliance

- Shock
MIL-S-901D, Grade A
- Vibration
MIL-STD-167-1
- Humidity
MIL-STD-810E
- EMI
MIL-STD-461E

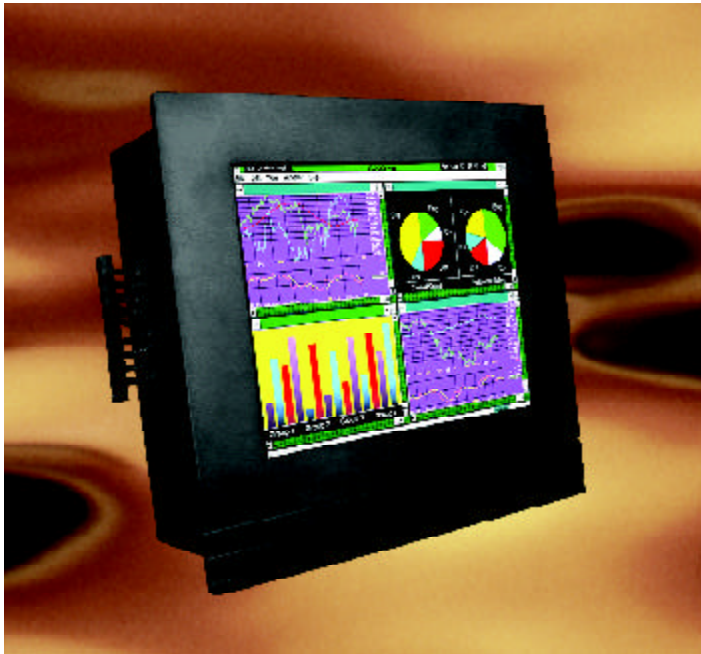
Options

- Touchscreen
Resistive
- Mechanical
Front: stainless steel
Rear: stainless steel

Product Specifications

MPAC-18

18" Flat Panel Computer Resistant to High Shock and Vibration



The MPAC-18 is a feature-packed, rugged computer designed for military applications, as well as applications requiring high-shock and high-vibration resistance. With a 1280x1024 resolution 18" display, touchscreen, Pentium III processor, and full complement of drives and I/O, this product is suited for virtually any application. Options included in the fully tested unit are a second Ethernet port and conversion of 100BaseT to 100BaseF on both ports. Call your Computer Dynamics Applications Engineer for mechanicals.

Display Specifications

- Display 18" 1280x1024 AMTFT
- Brightness 200 nit
- Contrast ratio 300:1
- Color 16.7M color/true color

Touchscreen Specification

- Type 5-wire resistive

Computer Specifications

- CPU 850 MHz Pentium III
- Memory One 168-pin DIMM socket, SDRAM up to 512M
- Display Integrated VGA/LCD controller
- Ethernet 10/100BaseT
- Audio Mono. speaker located at bottom of enclosure
- Serial ports One port RS-232; one port RS-232/485
- Parallel port One supporting SPP/EPP/ECP
- Keyboard/mouse One PS/2 keyboard, one PS/2 mouse in a DB9 connector
- USB ports Two USB ports
- Expansion slots Two PCI slots

Peripheral & Storage Specifications

- Powersupply AC 85W, 110/220 VAC @ 47 - 63 Hz, signal GND isolated from chassis GND
- Storage devices 3.5" IDE hard drive, one slim-type CD-ROM-R/W, one floppy drive, Flash drive

Mechanical & Environmental Specifications

- Construction Heavy-duty steel
- Color Chassis: black
- Temperature 0° - 50°C (operating)
-20° to 65°C (storage)
- Shock MIL-S-901D, Grade A, Class 1, Type A
- Vibration MIL-STD-167-1, Type A
- EMI/EMC MIL-STD-461E; CE102, CS101, CS114, CS116, RE101, RE102, RS101, RS103

Options

- Dual Ethernet -DUALNET
- Ethernet fiber converter -FIBER

Ordering Information

MPAC-18-<Memory>-Options

Specifications may change without notice due to component changes.

Product Specifications

MPAC-10

Flat Panel Computer Meets EMI/EMC Requirements of MIL-STD-461C/D



The MPAC-10 features a 486-level processor board, 10.4" VGA LCD, and an infrared touchscreen contained in a panel-mount enclosure developed for military applications. The 28V power supply meets requirements for Navy vessels. The MPAC-10 can be used to emulate any number of serial terminals and can also be used as a PC running simple applications. On-board DiskOnChip allows program storage without rotating media – a key point for use in higher shock and vibration environments. A special mesh filter and internal shielding allows the product to meet EMI/EMC requirements of MIL-STD-461C/D. Call your Computer Dynamics Applications Engineer for mechanicals.

Specifications

- Dimensions 13" x 10" x 2.8" (WxHxD)
330 mm x 254 mm x 71 mm
- Display 10.4" 640x480 color AMTFT LCD
- Touchscreen Infrared
- Processor 486DX-based single board computer with embedded 75 MHz CPU
- Memory 4M RAM; 2M DiskOnChip (DOC) for firmware and customer code. Larger capacities available
- I/O PS/2 keyboard/mouse; serial data port: DB9 style
- Software Custom firmware provided to accept ANSI II 3.6.4 formatted command strings. Some applications may require modification of this firmware to meet application requirements. We can provide this service.
- Mounting Panel-mount design
- Humidity 5 - 95% non-condensing
- Power 18 - 36 VDC; Fused 28 VDC typical @ 2A
- MTBF 33 Khrs (calculation done to MIL-HDBK-217F Notice 2 at 25C via Naval Sheltered Environment)
- Emulation mode VT320
- Temperature
 - Operating 0° - 55°C
 - Storage -40° to 70°C
- Finish FED-STD-595 per MIL-DTL-15090D (Navy Formula No. 111)
- Weight 13 lbs.

Compliance

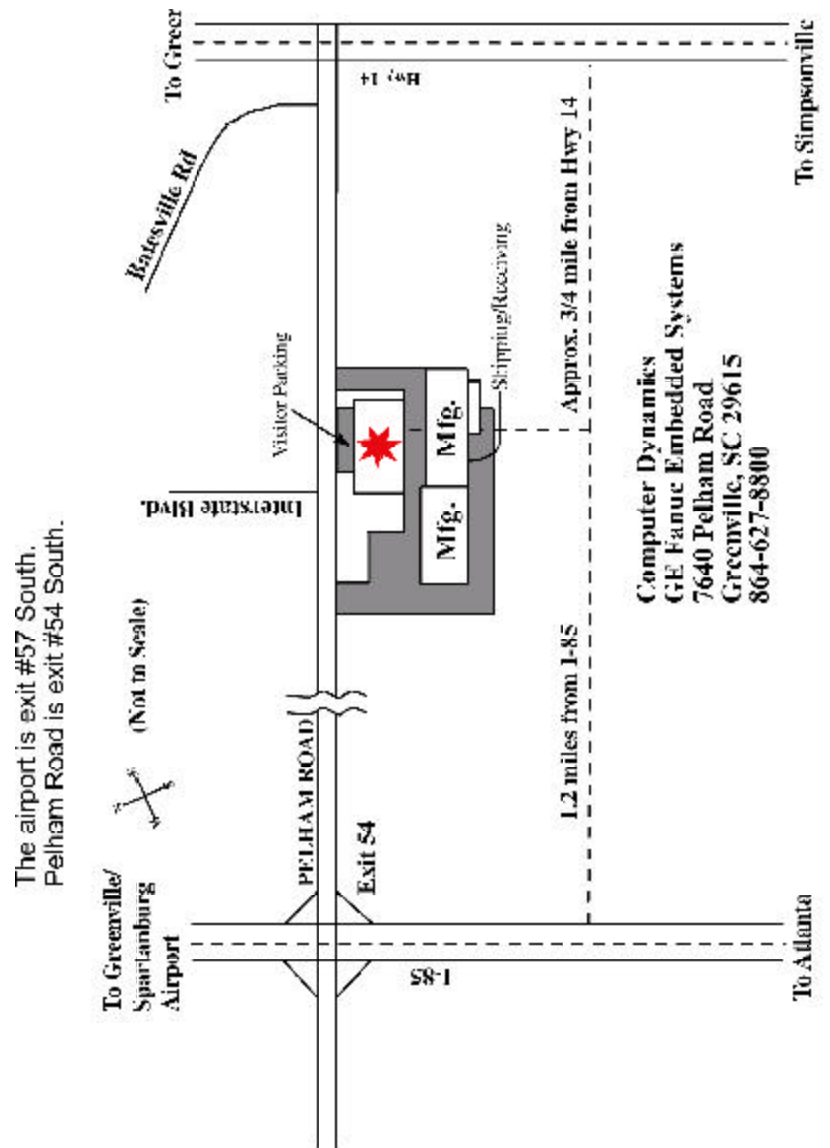
- Shock* Vertical: 89G, 3 ms
Side-to-side: 32G, 14 ms
Front-to-back: 74G, 5 ms
- Vibration* MIL-STD-671-1 4-15 Hz on 3-axis
- EMI MIL-STD-461C part 5: RE01 (Note: 6" fall-off), RE02, RS01 and RS03

** Note: These shock and vibration measurements were performed with the MPAC-10 mounted into a shock isolation ring. Call your Computer Dynamics Applications Engineer for more information.*

Directions&Accommodations

Accommodations Near and Directions to Computer Dynamics - Greenville, South Carolina

- Wingate Inn
41 Beacon Drive
864-281-1281
- Marriott
1-85 & Pelham Road
864-297-0300
- Fairfield Inn by Marriott
48 Fisherman Lane
864-234-9916
- Hampton Inn
47 Fisherman Lane
864-288-3500
- Comfort Suites
2681 Dry Pocket Road
864-213-9331
- MainStay Suites
2671 Dry Pocket Road
864-987-5566
- The Phoenix Inn
246 N. Pleasantburg Drive
1-800-257-3529
864-672-4704





Specialty IPC & Display Solutions

Custom designs are standard business practice for us. Our core competencies are x86-based single board computer design as well as video conversion solutions for flat panel displays. Our Mechanical Engineering department utilizes Pro-E for unique enclosure designs and mounting requirements. From simple modifications of existing products to complete new designs, we will entertain any request. Visit us online at www.cdynamics.com for more information on our flat panel solutions and the demands of the classifications they meet. Full specifications, new products, and other helpful information are always available at our website.

Information Centers

Computer Dynamics
Greenville, SC 1 (864) 627-8800

GE Fanuc Embedded Systems
USA and the Americas:
1 (800) GEFANUC or 1 (256) 880-0444

Asia Pacific:
+86 (10) 6561 1561

Europe, Middle East and Africa:
Paris, France 33 (1) 4324 6007

Additional Resources

For detailed technical specifications and product ordering information, please visit the Computer Dynamics web site at:

www.cdynamics.com

For more information on GE Fanuc Embedded Systems, please visit their web site at:

www.gefanuc.com/embedded

