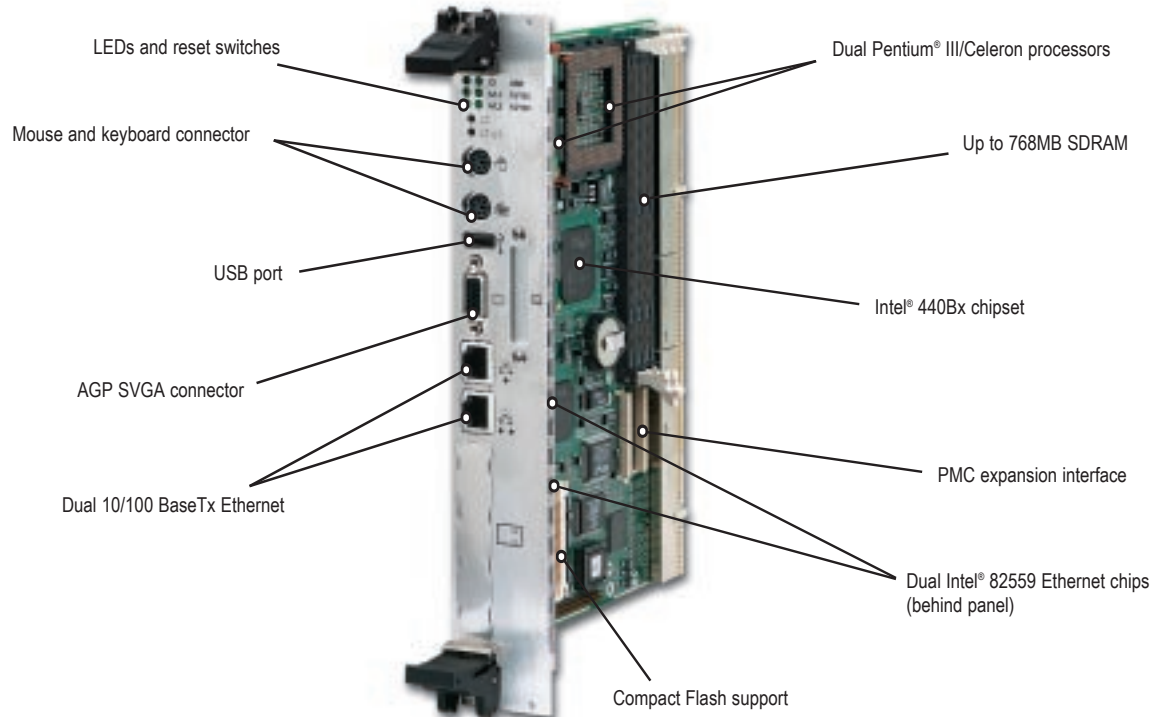


IBC 2601

CompactPCI™ Socket 370 Pentium III®/Celeron Board



Ordering Information

IBC 2601-600

Pentium® III FC-PGA, 600MHz
w/dual Ethernet, and SVGA

IBC 2601-700

Pentium® III FC-PGA, 700MHz
w/dual Ethernet, and SVGA

IBC 2601-850

Pentium® III FC-PGA, 850MHz
w/dual Ethernet, and SVGA

IBC 2601-D850

Dual Pentium® III FC-PGA, 850MHz
w/dual Ethernet, and SVGA

IBC 2601- RIO

Rear I/O transition module w/dual
Ethernet and SVGA

Memory Options

SDM-64MB	64MB RAM
SDM-128MB	128MB RAM
SDM-256MB	256MB RAM
SDM-512MB	512MB RAM
SDM-768MB	768MB RAM

Flash Options

CF-32MB	32MB Compact Flash
CF-64MB	64MB Compact Flash
CF-128MB	128MB Compact Flash
CF-256MB	256MB Compact Flash
MD-1GB	1 GB MicroDrive

Specifications

Microprocessor

Dual Socket 370 Microprocessor socket for use with:

- Intel® Pentium® III FC-PGA processors up to 850MHz
- Intel® Celeron™ processors of 700MHz and beyond

Cache

- Pentium® III: 256K, 256-bit wide integrated L2 cache
- Celeron™: 128K, 64-bit wide integrated L2 cache

Chipset

- Intel® 440BX

Dynamic RAM

- Up to 768MB of Synchronous DRAM (ECC or non-ECC)

Compact Flash Socket

- Up to 256MB Compact Flash
- Up to 1GB MicroDrive

BIOS

- I-Bus embedded BIOS
- Custom BIOS available

Watchdog Timer

- Software controlled with reset capability

Ethernet Interface (Dual)

- Dual 10/100BaseTx Ethernet Intel 82559
- Dual RJ-45 connectors and LEDs

Video Interface

- 69030 AGP Video with 4MB Memory
- 1280 x 1024 x True Color non-interlaced

PMC Expansion

- 32-bit, 33MHz PMC slot

Enhanced IDE (Dual)

- Dual IDE Interface up to 4 drives
- Ultra DMA/33 with synchronous transfers up to 33MB/s

System Monitoring

- On-board system monitoring bus of voltages, temperatures and fans

USB

- Single PC Compatible USB port

Legacy I/O

- Floppy drive interface, up to 2 drives
- Dual 16C550 Serial Ports
- Bi-directional Parallel Port with EPP and ECP
- PS/2 Mouse Port
- PS/2 Keyboard Interface

Mechanicals

- 2-Slot (8HP) x 6U **CompactPCI™** Compliant
- CompactPCI™** Compliant Rear I/O Board Available

Operating Environment

- Temperature: 0° - +50° C
- Storage: -40° - +85° C

Power Requirements

- (+5V@ 5.8A) (+12V@ <100mA) (-12V@ <100mA) (+3.3V@ 2.4A)

On-Board HDD

- Optional mezzanine for 20+GB IDE HDD
- Maintains 2-slot design

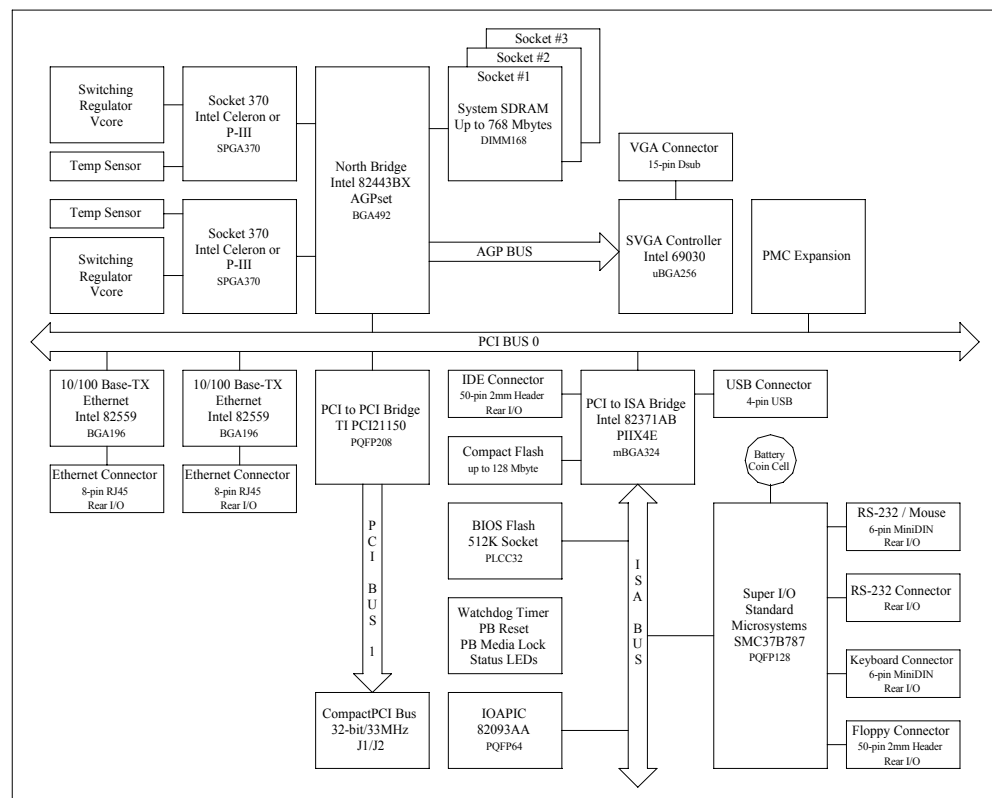


IBC 2601

CompactPCI™ Socket 370 Pentium III®/Celeron Board

The **IBC 2601** is a 6U **CompactPCI™** System Master CPU, designed to deliver the high performance and bandwidth demanded by many of today's telecom, Internet and industrial control applications. The CPU delivers dual Pentium® III performance, remaining affordable through the utilization of the Intel 440B chipset and cost-effective SDRAM. This makes the **IBC 2601** an ideal solution for a broad range of applications.

The **IBC 2601** supports single Intel Celeron™ processors operating to 700MHz or single/dual Intel Pentium® III processors operating up to 850MHz. Program and data storage needs are met with support for up to 768 Mbytes of SDRAM and 256 Mbytes of CompactFlash or 1GB MicroDrives. Additional features include dual 10/100 Base-TX Ethernet, PMC expansion and AGP Video. Also supported is the full set of standard PC peripherals including Ultra DMA IDE, 1.44 Mbyte floppy, USB, RS-232 serial ports, parallel port, mouse and keyboard. Other features include serial port console redirection, battery backed real-time clock, CPU temperature monitors, and watchdog timer.



For Further Information



Worldwide Headquarters

I-Bus Corporation
 3350 Scott Blvd, Building 54
 Santa Clara, CA 95054
 United States
 Phone : +1 (408) 450-7880
 Fax : +1 (408) 450-7881
Toll Free: 877-777-IBUS
 Email: contact.us@ibus.com

European Headquarters

I-Bus UK Ltd
 Unit 6, Chichester Business Park
 City Fields Way, Tangmere
 West Sussex, PO20 2LB, UK
 Tel: +44 (0) 1243 756300
 Fax: +44 (0) 1243 756301
 Email: contact.uk@ibus.com

France, Italy

I-Bus France
 B.P 45 Valbonne
 06901 Sophia Antipolis CEDEX
 France
 Tel: +33 (0) 493 004 360
 Fax: +33 (0) 493 004 369
 Email: contact.fr@ibus.com