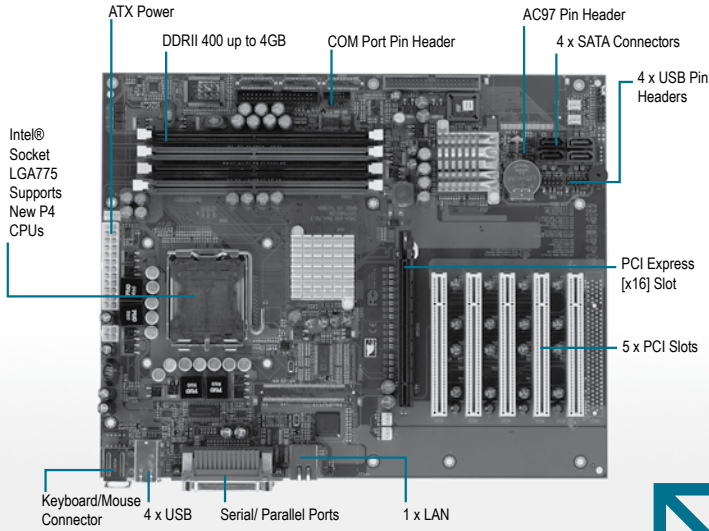


# IMBA-880

03

Industrial Motherboards

## Industrial Motherboard with Intel® Core™ 2 Duo up to 2.66 GHz/ Pentium® 4 up to 3.8 GHz/ Celeron®-D Core™ 2 Duo CPU/ PCI-Express [x16] Slot/ Socket LGA775/ SATA Support



### Features

- Intel® Core™ 2 Duo/ Pentium® 4/ Celeron®-D LGA775 CPU up to 3.8 GHz (1066/800/533 MHz FSB)
- DDRII Memory Support up to 4GB
- Integrated GMA950 2D/3D Graphics Accelerator with PCI-Express [x16] Slot, VGA Support
- 10/100 Base-TX Ethernet
- USB 2.0 x 8/ RS-232/422/485 x 2/ Parallel x 1/ IrDA Port x 1
- Ultra ATA100 & SATA-II & CompactFlash™ Type-II Storage
- Watchdog Function 1~255 Sec.



### Specifications

System	
Form Factor	Standard ATX Form Factor
Processor	Intel® Core™ 2 Duo up to 2.66 GHz/ Pentium® 4 up to 3.8 GHz/ Celeron® D processor up to 3.46 GHz; LGA775 package, FSB: 533/800/1066MHz, Compatible P6 Bus protocol
System Memory	240-pin 1.8V DDRII DIMM Socket x 4, total up to 4GB Supports Dual Channel DDR memory (DDRII 533/667)
Chipset	Intel® 945G + Intel® 82801GB (ICH7)/ ICH7R (optional)
Ethernet	Intel® 82562EZ controller 10/100Mb LAN optional, RJ-45 x 1
BIOS	Award Plug & Play BIOS – 8Mb ROM
IDE Interface	ATA-100 x 1 channel SATA-II x 4 (Supports four SATA II devices)
SSD	Supports CompactFlash™ Type II Connector (optional)
PCI Interface	32-bit/33MHz PCI bus supports 5 Master devices
Expansion Interface	PCI, PCI-Express
Watchdog Timer	1~255 sec. can be set with software on Super I/O
RTC	Internal RTC
Power Requirement	ATX12V
Power Consumption (Typical)	95W, with Pentium® D 3.2GHz/ FSB 800MHz/ 1MB x 2 L2 Cache
EMC	CE/ FCC Class A
Board Size	12" (L) x 9.6" (W) (304.8 mm x 243.8 mm)
Gross Weight	0.71 lb (0.3 kg)
MTBF (Hours)	55,177
Operating Temperature	32°F ~ 130°F (0°C ~ 40°C)
Display	
VGA Controller	Supports CRT/ LCD Simultaneous Display Integrated VGA on Intel® 945G core frequency up to 400MHz/[x16] PCI-Express slot
Memory	Share memory 256 MB
Resolutions	1600x1200@36-bit colors for CRT
I/O	
Serial Port	ICH7/R + Winbond 83627EHF COM port x 2: ( Internal Pin Header x1 , External D-sub x 1 ) COM 1, 2: RS-232/ RS-422/ RS-485
Parallel Port	Supports SPP/ EPP/ ECP mode
Universal Serial Bus	USB 2.0 Port x 8 5x2-pin headers for internal connection x 2 Type-A connector onboard x 4
Floppy Drive Interface	Standard FDD port x 1, supports up to two floppy devices
Keyboard and Mouse	Mini-DIN PS/2 Keyboard connector x 1 Mini-DIN PS/2 Mouse connector x 1
IR Interface	IrDA Tx/Rx Header x 1
Audio (Daughter Board)	AC 97 pin-header (Audio Daughter Board optional)

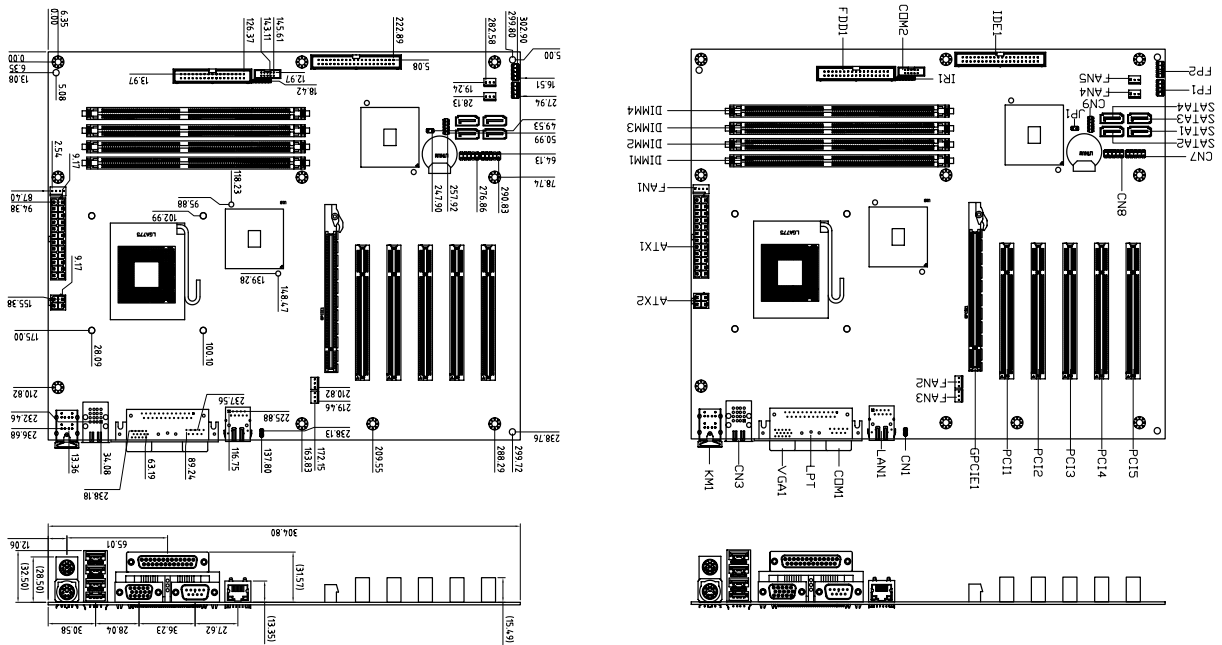
### Packing List

- **1701340704**  
Flat Cable, 34P, 70cm, GRAY for Floppy Disk Drive
- **1701400453**  
Cable, 40P 2.54mm IDC w/Nose w/Fold, 40P 2.54mm IDC w/ Nose w/Fold, 45cm, Blue ATA-100, B016-009-2
- **1701100305**  
Flat Cable, 9P/DB9P MALE, 10P/2.0mm Pitch/IDC NO FOLD, 30cm, W/BRACKET
- **1709070800**  
4 SATA CABLES, 7P Pitch 1.27mm, 80cm
- **1759200161**  
CPU Cooler Fan, for LGA775 Pentium® 4 3.6G, 4P, 12V, Dual ball bearing, LGA-775-91502
- **Quick Installation Guide**
- **Utility CD-ROM**
- **IMBA-880**

### Ordering Information

- **TF-IMBA-880-B10-VE**  
Industrial Motherboard, Socket 775 Core™ 2 Duo Processor, with VGA, 1 x 10/100M Ethernet, Rev B1.0

## Dimension Unit: mm



## Chassis Options

Model Name	Description	Remark
TF-AMC-280M	ATX/Micro ATX, Wallmount, Bare Chassis, for PS2 Power, PS_SW(ATX), Color: White	
TF-ARC-615M	Rackmount, 1U Chassis Bare for Motherboard & PS2 Power, PS_SW(ATX), Color: Black	
TF-ARC-625M	Rackmount, 2U Chassis Bare for Motherboard & PS2 Power, PS_SW(ATX), Color: Black	
TF-ARC-635M	Rackmount, 3U Chassis Bare for Motherboard & Power PS2, PS_SW(ATX), Color: Black	
TF-ARC-636M	Rackmount, 3U Chassis Bare for Motherboard & Power 3U, PS_SW(ATX), Color: Black	
TF-ARC-640M	Rackmount, 4U Chassis Bare for Motherboard & PS2 Power, PS_SW(ATX), Color: White	
TF-ARC-645M	Rackmount, 4U Chassis Bare for Motherboard & PS2 Power, PS_SW(ATX), Color: Black	

## Optional Accessories

- **PER-U00A**  
AC97 Audio Daughter Board
- **1759200162**  
CPU Cooler Fan, for LGA775 Pentium® 4 3.8GHz, 3P, 12V, Dual Ball Bearing, 2U