

# 3500 Series Flat Panel Industrial PCs



Xycom Automation's open solutions connect to other automation standards with industrial PCs that are tough enough for plant floor use. (Our standard PC configurations meet the strict specifications for

## FEATURES

- Preloaded with MS-DOS, Windows® 95, or Windows NT® operating system
- Optional 10/100 BaseT Ethernet port
- Three or six ISA/PCI expansion slots
- 10.4" to 15" flat panel color displays
- Reprogrammable keypad, analog resistive touchscreen, or both for operator input
- AMD™ AM5X86, Intel® Celeron® and Pentium® III processors (up to 700 MHz)
- Up to 256 MB DRAM
- CD-ROM and floppy drive options
- 6.4 GB hard drive
- Flash drive option
- Two USB ports (with Intel processor)
- Parallel, RS-232 and RS-485, PS/2 keyboard, and VGA ports
- IrDA-compatible infrared port
- NEMA 4/4X/12 front panel
- UL listed for hazardous locations: Class I, Division 2, Groups A, B, C, D; Class II, Division 2, Groups F and G

use in hazardous locations and Europe's CE mark.) Based on CPU boards designed specifically for industrial automation, these systems provide the capabilities required by demanding applications. With an installed base of 180,000 systems, our industrial PC products are successfully applied in manufacturing and continuous process environments.

## Easy-to-Read, Sharp Displays

Bright TFT screens can display complex operations with clarity. We offer a wide range of displays from 10.4" VGA to 15" XGA displays for low-end

## Higher Performance

Up to 700 MHz Pentium III processors available to drive the fastest and most demanding applications. An Ethernet option allows you to connect these units networks at startup with little effort.

## Meets High Standards

To survive on the plant floor, our PCs meet NEMA 4/4X/12, FCC, UL, and European CE mark requirements. Xycom Automation also leads the industry in reliability, service, and support with an optional five year warranty unmatched in the industry.

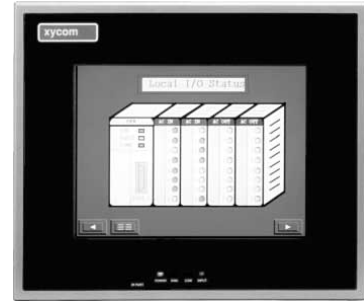
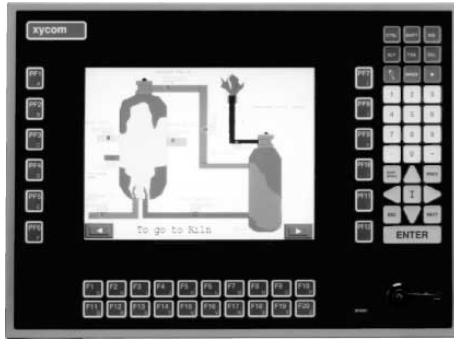
## Open Platform

With a preloaded Windows operating system, you can communicate with locally or Ethernet connected products and databases through Microsoft and other enabling technologies—including ActiveX, OPC, and standard DDE. Exchange plant floor data with office applications and see what's happening from the plant floor to corporate headquarters.

## Fits Your Needs

You can configure and reconfigure Xycom Automation's industrial PCs for nearly any application through a wide variety of standard technologies. Our industrial PCs make it easy for end users and vendors to use cost-effective industry-standard components, storage options, ISA/PCI expansion, and programmable keypads for application specific requirements.

# PRODUCT CONFIGURATIONS



Model	3510KP(T)	3510T
Display	10.4" flat panel color display, 640 x 480 (VGA)	10.4" flat panel color display, 640 x 480 (VGA)
Operator Input	63-position keypad (touchscreen option)	Analog resistive touchscreen
Processor	Intel Celeron, Pentium III; AMD AM5x86	Intel Celeron, Pentium III; AMD AM5x86
Preloaded OS	MS-DOS, Windows NT or 95	MS-DOS, Windows NT or 95
Ethernet	Option	Option
Expansion	One ISA, one PCI, one shared	One ISA, one PCI, one shared



Model	3512KP(T)	3512T
Display	12.1" flat panel color display, 800 x 600 (SVGA)	12.1" flat panel color display, 800 x 600 (SVGA)
Operator Input	63-position keypad (touchscreen option)	Analog resistive touchscreen
Processor	Intel Celeron, Pentium III	Intel Celeron, Pentium III
Preloaded OS	MS-DOS, Windows NT or 95	MS-DOS, Windows NT or 95
Ethernet	Option	Option
Expansion	One ISA, one PCI, one shared	One ISA, one PCI, one shared



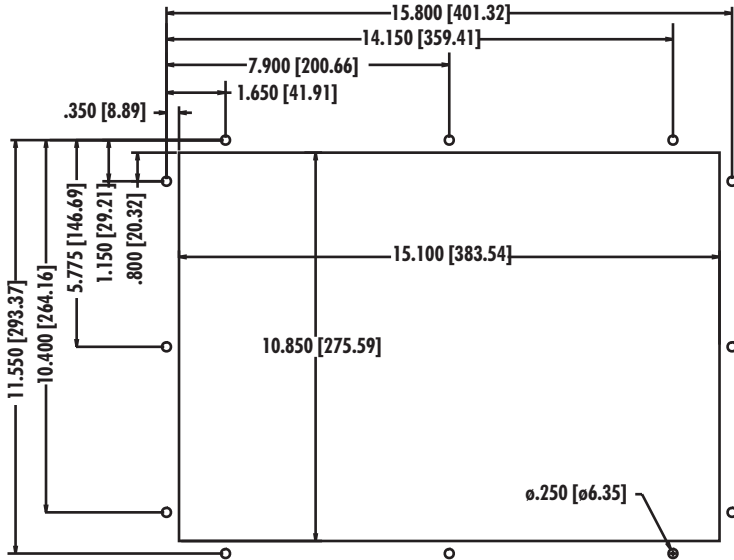
<b>Model</b>	<b>3512KPM(T)</b>	<b>3515KPM(T)</b>
<b>Display</b>	12.1" flat panel color display, 800 x 600 (SVGA)	15" flat panel color display, 1024 x 768 (XGA)
<b>Operator Input</b>	71-position keypad and industrial mouse (touchscreen option)	74-position keypad and industrial mouse (touchscreen option)
<b>Processor</b>	Intel Celeron, Pentium III	Intel Celeron, Pentium III
<b>Preloaded OS</b>	MS-DOS, Windows NT or 95	MS-DOS, Windows NT or 95
<b>Ethernet</b>	Option	Option
<b>Expansion</b>	Four ISA and two PCI or five ISA and one PCI slots	Four ISA and two PCI or five ISA and one PCI slots



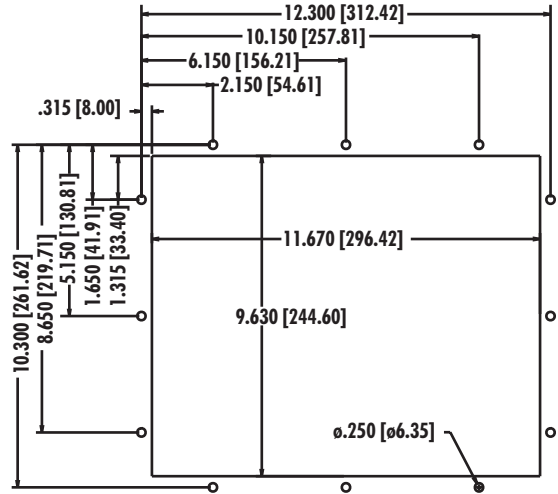
<b>Model</b>	<b>3515T</b>
<b>Display</b>	15" flat panel color display, 1024 x 768 (XGA)
<b>Operator Input</b>	Analog resistive touchscreen
<b>Processor</b>	Intel Celeron, Pentium III
<b>Preloaded OS</b>	MS-DOS, Windows NT or 95
<b>Ethernet</b>	Option
<b>Expansion</b>	Four ISA and two PCI or five ISA and one PCI slots

# PRODUCT AND MOUNTING DIMENSIONS

## 3510KP(T) Mounting



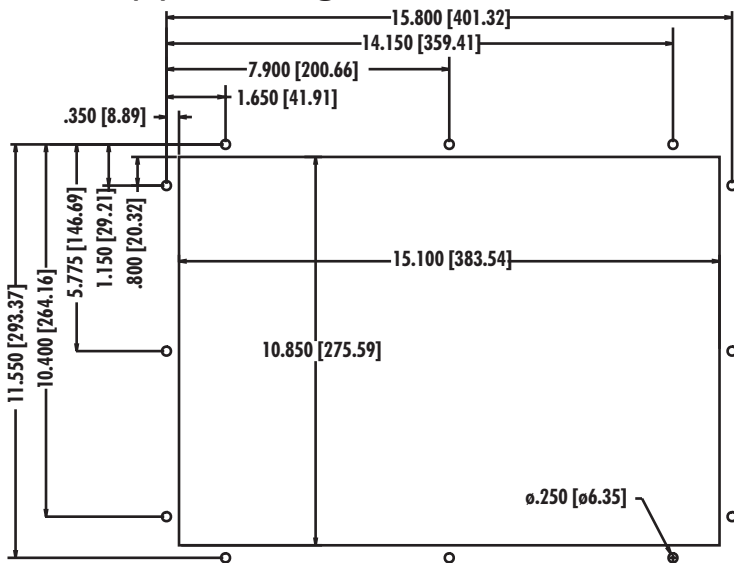
## 3510T Mounting



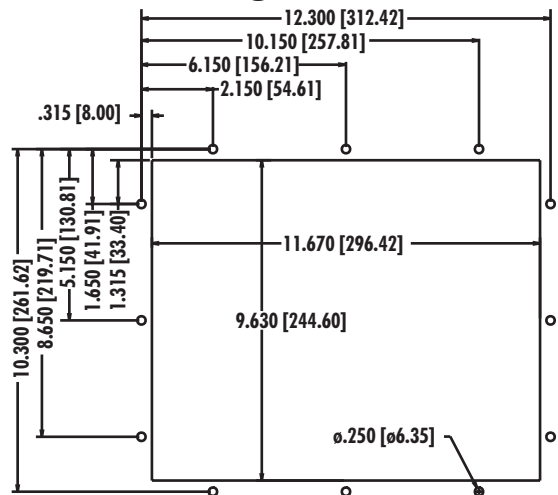
## 3510 Unit Dimensions

Model	3510KP(T)	3510T
Height	12.25" (311.5 mm)	11.00" (279.4 mm)
Width	16.50" (419.1 mm)	13.00" (330.2 mm)
Depth	6.65" (168.9 mm)	6.50" (165.1 mm)
Mounting Depth	5.65" (143.5 mm)	5.75" (146.0 mm)
Weight	16 lbs (7.2 kg)	16 lbs (7.2 kg)

## 3512KP(T) Mounting



## 3512T Mounting

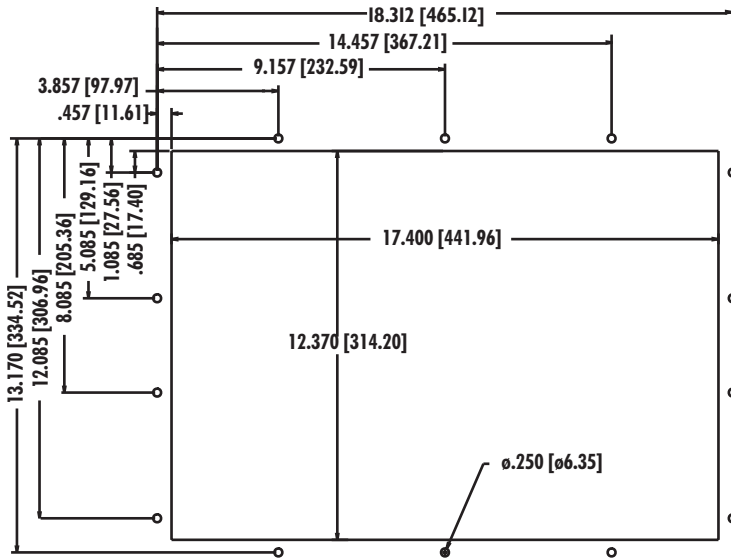


## 3512 Unit Dimensions

Model	3512KP(T)	3512T
Height	12.25" (311.5 mm)	11.00" (279.4 mm)
Width	16.50" (419.1 mm)	13.00" (330.2 mm)
Depth	6.65" (168.9 mm)	6.50" (165.1 mm)
Mounting Depth	5.65" (143.5 mm)	5.75" (146.0 mm)
Weight	16 lbs (7.2 kg)	16 lbs (7.2 kg)

**\*The 6-slot 3500 units can also be mounted in an EIA standard 19" rack.**

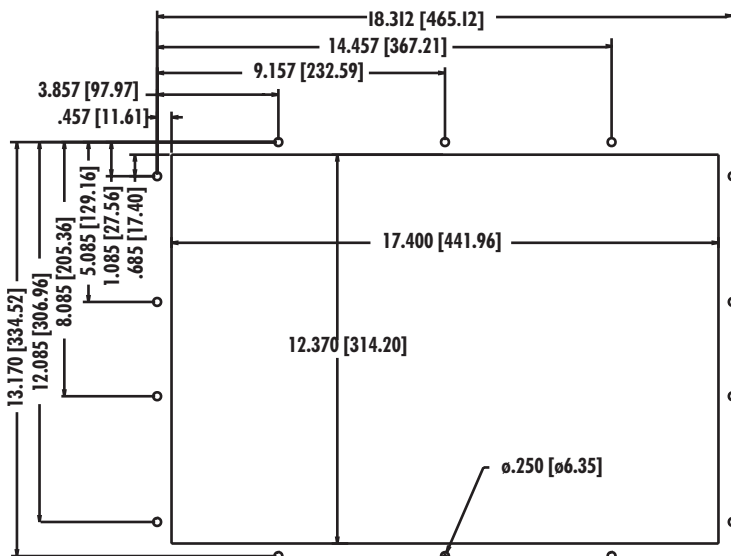
### 3512KPM(T), 3515KPM(T) Mounting\*



### 3512KPM(T), 3515KPM(T) Unit Dimensions

Model	3512KPM(T), 3515KPM(T)
Height	14.20" (360.7 mm)
Width	19.00" (482.6 mm)
Depth	9.75" (247.7 mm)
Mounting Depth	9.00" (228.6 mm)
Weight	42 lbs (18.9 kg)

### 3515T Mounting\*



### 3515 Unit Dimensions

Model	3515T
Height	14.20" (360.7 mm)
Width	19.00" (482.6 mm)
Depth	9.75" (247.7 mm)
Mounting Depth	9.00" (228.6 mm)
Weight	42 lbs (18.9 kg)

# PRODUCT SPECIFICATIONS AND RATINGS

## Environmental

	Operating	Nonoperating
<b>Thermal</b>	0C to 50C	-20C to 60C
<b>Humidity</b>	20% to 80% RH, noncondensing	20% to 80% RH, noncondensing
<b>Shock<sup>a</sup></b>	15g peak acceleration, 11 msec duration	30g peak acceleration, 11 msec duration
<b>Vibration</b>	.006" peak to peak displacement	.015" peak to peak displacement
<b>5-2000 Hz<sup>a</sup></b>	1.0g maximum acceleration	2.5g maximum acceleration
<b>Altitude</b>	Sea level to 10,000 ft.	Sea level to 40,000 ft.

<sup>a</sup>These values are with solid state hard drives and not rotating media drives.

## Electrical

	Units with 3-slot backplane and AM5x86 processor	Units with 3-slot backplane and Intel processors	Units with 6-slot backplane
<b>Power supply</b>	80 Watt power	80 Watt power	200 Watt power
<b>AC power</b>	115 to 230V AC, autoranging, 50-60 Hz, 3.0A (maximum)	115 to 230V AC, autoranging, 50-60 Hz, 3.0A (maximum)	115 to 230V AC, autoranging, 50-60 Hz, 6.3A (maximum)
<b>DC power (option)</b>	20 to 36V DC, 24V nominal, 10A (maximum)	19 to 30V DC, 24V nominal, 16.0A (maximum)	19 to 30V DC, 24V nominal, 16.0A (maximum)
<b>Available power<sup>bcd</sup></b>	+5V@6.17A +12V@1.88A -12V@.71A	+5V@1.54A +12V@1.82A -12V@.72A	+5V@10.6A +12V@4.88A -5V@.76A -12V@.46A

<sup>b</sup>Total not to exceed 46 watts for units with 3-slot backplane and AM5x86 processor

<sup>c</sup>Total not to exceed 36 watts for units with 3-slot backplane and Intel processors

<sup>d</sup>Total not to exceed 100 watts for units with 6-slot backplane

## Front Panel

- NEMA 4/4X/12 IP65

## Regulatory Compliance

### CE

- EN 55022: Class A
- EN 50082-2
- EN 60950

### FCC

- 47 CFR, Part 15, Class A

## Safety Agency Approvals

### UL

- UL 1950
- UL 1604

### CUL

- CSA-C22.2, #950
- CSA-C22.2, #213

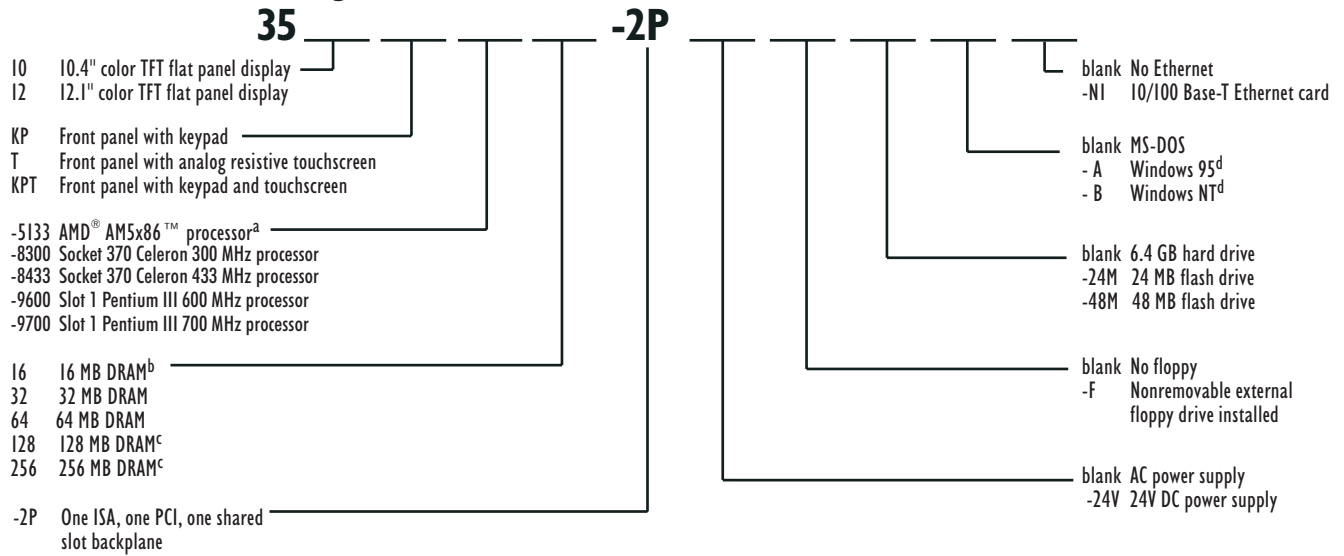
# ORDERING INFORMATION

To create an order number, follow the conventions defined by the example order numbers and product configurations.

## Example Order Number

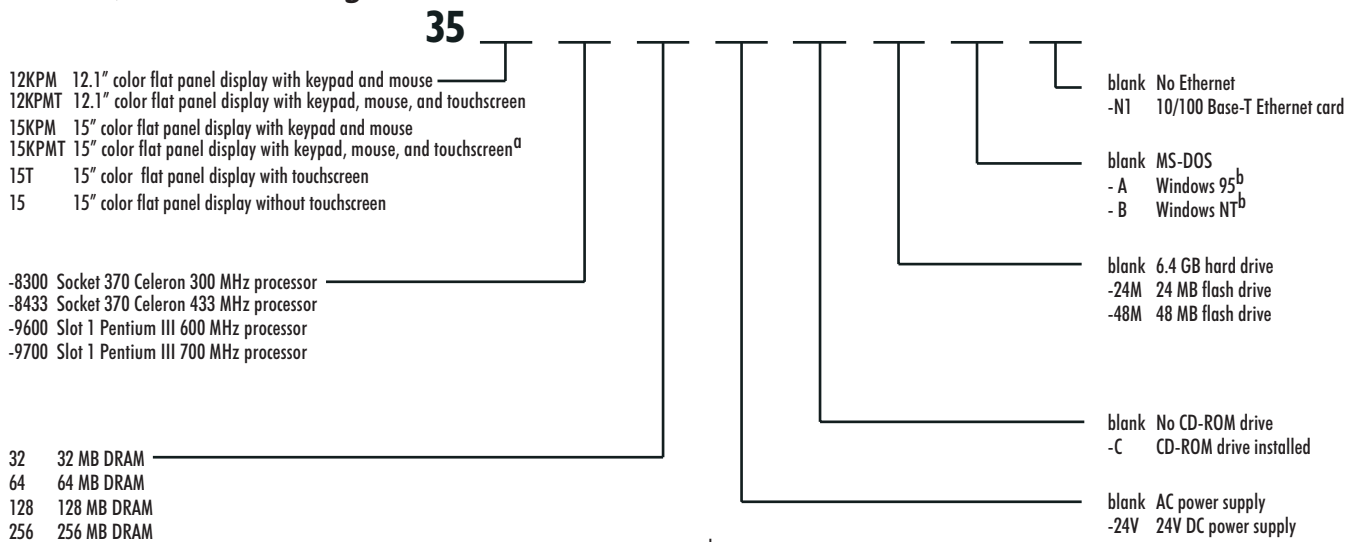
Order Number	Description
3512KPM-960064-B	3500 series industrial PC with 6-slot ISA/PCI backplane, 12.1" TFT color display, reprogrammable keypad, industrial mouse, 64 MB RAM, preloaded with Windows NT operating system

## 3-slot ISA/PCI Product Configurations



<sup>a</sup>3510 only • <sup>b</sup>Only with AM5x86 CPU • <sup>c</sup>Not with AM5x86 CPU • <sup>d</sup>Requires 6.4 GB hard drive, 32 MB DRAM

## 6-slot ISA/PCI Product Configurations



<sup>a</sup>Contact factory for availability • <sup>b</sup>Requires 6.4 GB hard drive

---

Xycom Automation, Inc.  
734-429-4971 • Fax: 734-429-1010  
<http://www.xycom.com>

Canada Sales: 905-607-3400  
Northern Europe Sales: +44-1604-790-767  
Southern Europe Sales: +39-011-770-53-11

