

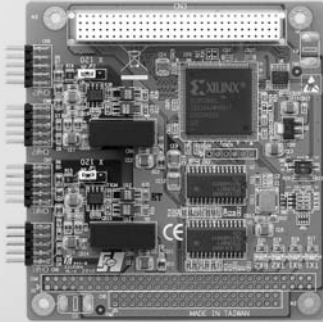
PCM-3680I

PCM-3680

2-port CAN-bus PCI-104 Module with Isolation Protection

2-port CAN-bus PC/104 Module with Isolation Protection

NEW



PCM-3680I



Features

- PCI-104 Bus
- Operates two separate CAN networks at the same time
- High speed transmission up to 1 Mbps
- 16 MHz CAN controller frequency
- Optical isolation protection of 2,500 V_{DC} ensures system reliability
- I/O address automatically assigned by PCI PnP
- LED indicated transmit/receive status on each port
- Windows DLL library and examples included
- Supports high operating temperature (-40 ~ 85° C)
- Supports Windows 2000/XP/Vista and Linux

Specifications

General

- **Card Interface** PCI-104
- **Certifications** CE
- **Connectors** 4 x 10 pin box header
- **Dimensions** 90 x 96 mm (3.6" x 3.8")
- **Ports** 2
- **Power Consumption** 5 V @ 400 mA

Communications

- **CAN Controller** SJA-1000
- **CAN Transceiver** 82C250
- **Protocol** CAN2.0 A/B
- **Speed** Up to 1 Mbps programmable transfer rate
- **CAN Frequency** 16 MHz
- **Signal Support** CAN_H, CAN_L

Protection

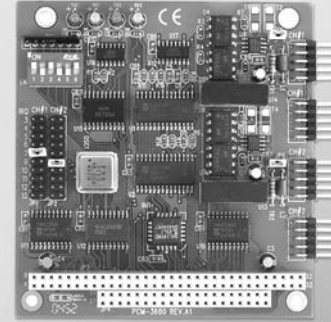
- **Isolation Protection** 2,500 V_{DC}

Environment

- **Operating Temperature** -40 ~ 85° C (refer to IEC 68-2-1, 2) (-40 ~ 185° F)

Ordering Information

- **PCM-3680I** 2-port CAN-bus PCI-104 Module w/ Iso. Protection



PCM-3680



Features

- Operates two separate CAN networks at the same time
- High speed transmission up to 500 kbps
- 16 MHz CAN controller frequency
- Optical isolation protection of 1,000 V_{DC} ensures system reliability
- Wide IRQ selection for each port: IRQ 3, 4, 5, 6, 7, 9, 10, 11, 12, 15
- LEDs indicate Transmit/Receive status on each port
- Direct memory mapping enables very fast access to the CAN controllers
- Windows DLL library and examples included
- Supports Windows 2000/XP/Vista and Linux

Specifications

General

- **Card Interface** PC/104
- **Certifications** CE
- **Connectors** 2 x DB9-M w/cable
- **Dimensions** 90 x 96 mm (3.6" x 3.8")
- **Ports** 2
- **Power Consumption** 5 V @ 400 mA

Communications

- **CAN Controller** SJA-1000
- **CAN Transceiver** 82C250
- **Protocol** CAN2.0 A/B
- **IRQ** 3, 4, 5, 6, 7, 9, 10, 11, 12 or 15
- **Memory Segment Base Address** From C800H to EFO0H
- **Signal Support** CAN_H, CAN_L

Protection

- **Isolation Protection** 1,000 V_{DC}

Environment

- **Operating Temperature** 0 ~ 65° C (32 ~ 122° F)

Ordering Information

- **PCM-3680** Dual-port Isolated CAN Interface Module