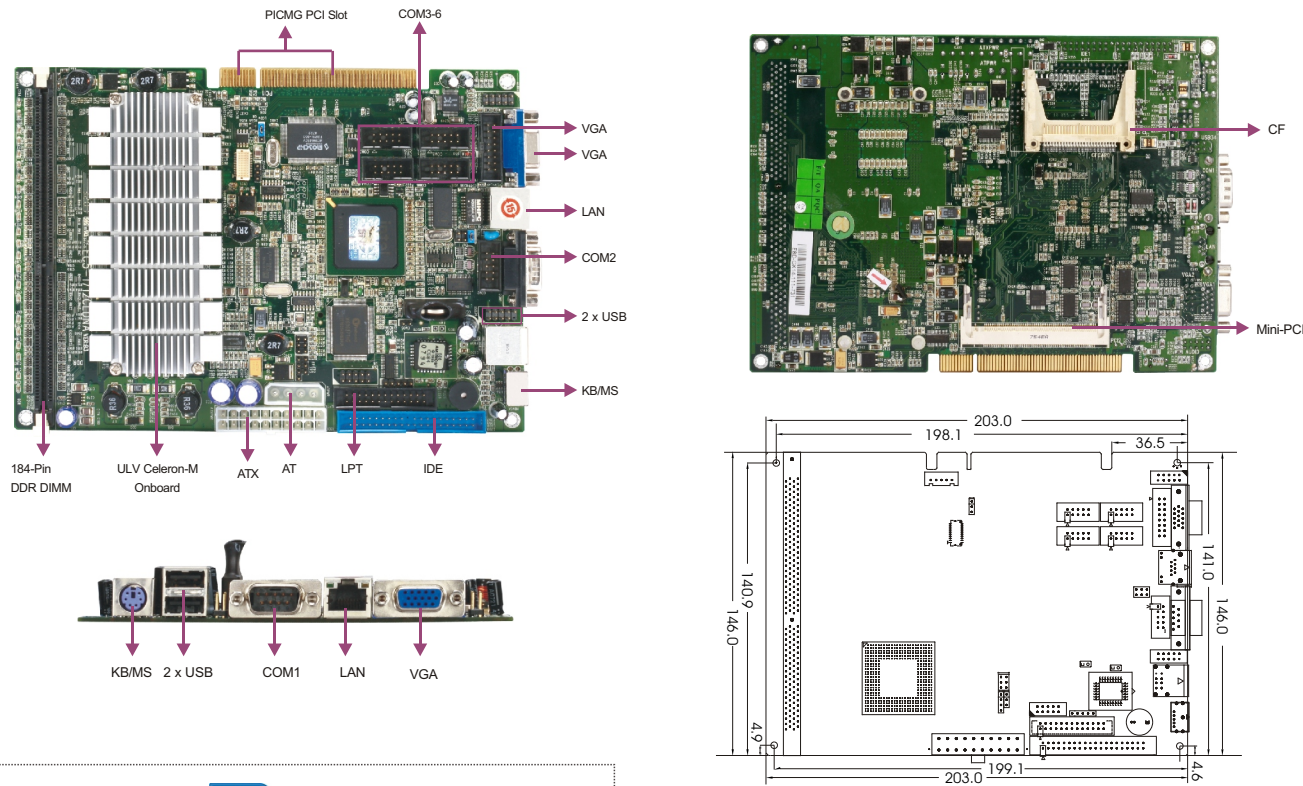
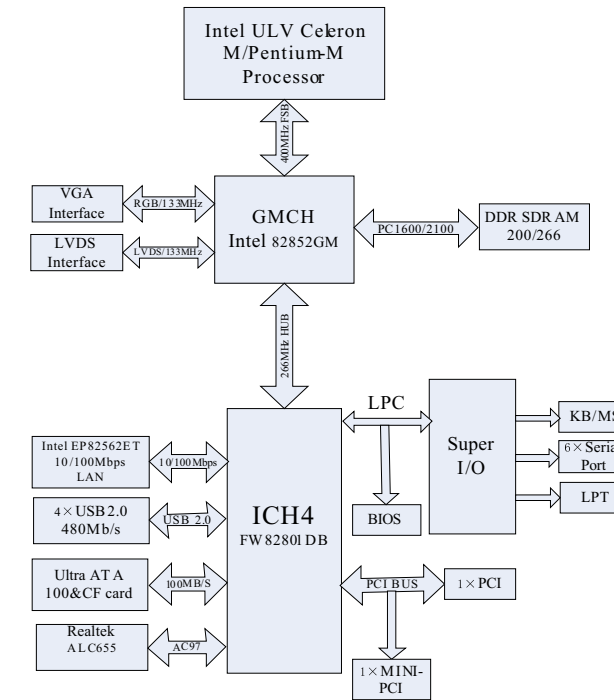


EC5-1712CLDNA

5.25" SBC with ULV Celeron® M CPU and LVDS/VGA/CF/LAN/Audio/6 COM



Board Diagram



Features

- Onboard ULV Intel® Celeron® M 600MHz, optional 800MHz
- 1 x 184-pin DIMM, up to 1GB DDR200/266 memory
- Supports dual-display of CRT+LVDS
- 1 x 10/100Mbps Ethernet controller
- Supports 4 x USB2.0, 6 x COM, 1 x IDE, 1 x LPT, 1 x VGA, 1 x LVDS, 1 x CF, 1 x IrDA

Specifications

System	
Processor	Onboard ULV Intel® Celeron® M 600MHz, optional 800MHz
Chipset	Intel® 852GM+ICH4
Memory	Supports 1 x 184-pin DIMM, up to 1GB DDR200/266 memory
Hardware Monitor	Monitors CPU temperature, voltage and watchdog timer, etc.
Watchdog Timer	1~255 sec./min. timer system reset/interrupt, setup by software
Expansion Interface	1 x Mini-PCI, 1 x PICMG PCI
Storage	
IDE	One Ultra ATA33/66/100 IDE interface
Serial ATA	N/A
Floppy	N/A
CF	1 x CompactFlash Socket Type I/II
DOC/DOM	N/A
I/O Interface	
USB	4 x USB2.0 ports, available interfaces of 1 x 9-pin header and 2 x USB ports onboard
Serial Port	6(1 x RS-232/422/485, 5 x RS-232), available interfaces of 1 x DB9 and 5 x 10-pin header onboard
Parallel Port	1 x LPT
IrDA	SIR 115 kbps, IrDA 1.1 compliant
GPIO	4 x GPI, 4 x GPO
Audio	AC'97, onboard Realtek ALC655, available interfaces of Speaker-out, Line-in and Mic-in

Display	
Chipset	Intel® 852GM integrated graphics acceleration controller
Memory	64MB shared video memory
Resolution	VGA mode up to 2048 x 1536@75Hz or 1600 x 1200@85Hz LVDS mode up to 1600 x 1200@18bit
Dual Display	Supports CRT+LVDS independent dual display
Ethernet	
Chipset	Intel® EP82562ET
Speed	10/100Mbps
Connector	1 x RJ 45
Mechanical and Environmental	
Dimensions	203mm x 146mm
Operating Temperature	-15°C~65°C
Storage Temperature	-25°C~75°C
Operating Humidity	5%-90%, non-condensing
Power	
Power Supply	Supports AT/ATX power supply
Power Consumption	Typical 9.76W (ATX, Celeron M 600MHz,256MB DDR266) Typical 10.44W (AT, Celeron M 600MHz,256MB DDR266)
Operating System	
Windows OS	Windows 2000/Windows XP
Embedded OS	Linux/XP Embedded/WinCE

Available Accessories

Part Number	Name	Description	Qty.
	Driver CD/Protective film/RoHS	EC5-1712CLDNA	1
	User's Manual/RoHS	EC5-1712CLDNA	1
2330-000041	Jumper/RoHS	2.54mm pitch, blue	6
2360-000851	VGA cable/RoHS	VGA connector to 2 x 8 Pin, length: 220mm/RoHS	1
2360-002571	Dual USB ports with bracket/B4/RoHS	Two USB ports to one 2 x 5 Pin, length: 210mm/RoHS	1
2360-005031	Y-cable for keyboard and mouse/RoHS	One Mini-DIN port to two PS/2 ports, length: 250mm/RoHS	1
2360-008331	HDD flat cable/RoHS	DMA66/HDD/CABLE/40P/80-line/length: 450mm	1
2360-010011	Serial cable/RoHS	DB9 connector to 2 x 5 Pin, length: 265mm/RoHS	5
2360-010161	Parallel port cable with bracket/RoHS	DB25 connector to 2 x 13 Pin, length: 265mm/RoHS	1
2360-011141	Audio cable with bracket/RoHS	Three audio connectors with bracket to 2 x 5 Pin, length: 300mm	1

Related Product

Item	Typical Recommendation
Expansion Card	PCI-6104P3
Power Supply	AT or ATX

Ordering Information

Part Number	Model Number	Description
0030-004851	EC5-1712CLDNA-EA	Motherboard/RoHS/EMC Grade A
0030-006061	EC5-1712CLDNA	Motherboard/RoHS
0030-008200	EC5-1712CLDNA-1.6G	Motherboard/Pentium-1.6G
0030-004710	EC5-1712CLDNA-600M	Motherboard/Celeron-M 600M
0030-004850	EC5-1712CLDNA-EA	Motherboard/EMC Grade A
0030-004851	EC5-1712CLDNA-EA	Motherboard/RoHS/EMC Grade A
0030-006090	EC5-1712CLDNA/800M	Motherboard/Celeron-M 800M
0030-011430	EC5-1712CLDNA/C-M1.5G(PPC-1508)	Motherboard/Celeron-M 1.5G(PPC-1508)
0030-004720	EC5-1712CLDNA/VER: B-600M	Motherboard/VER: B/Celeron-M 600M
0030-004721	EC5-1712CLDNA/VER: B-600M	Motherboard/VER: B/Celeron-M 600M/RoHS
0030-004920	EC5-1712CLDNA/VER: B-600M/no CF socket	Motherboard/VER: B/Celeron-M 600M/no CF socket
0030-004921	EC5-1712CLDNA/VER: B-600M/no CF socket	Motherboard/VER: B/Celeron-M 600M/no CF socket/RoHS
0030-001600	EC5-1712CLDNA/no CF socket	Motherboard/no CF socket