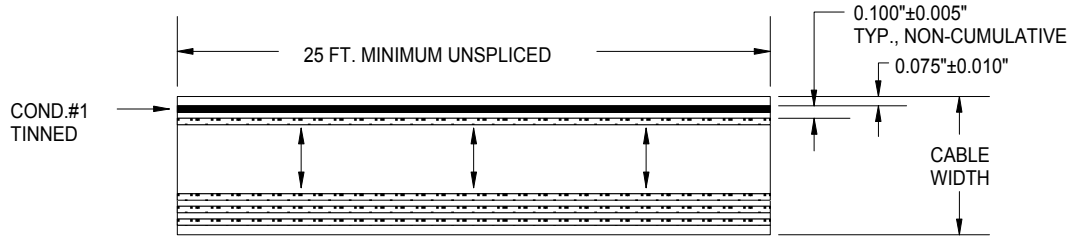
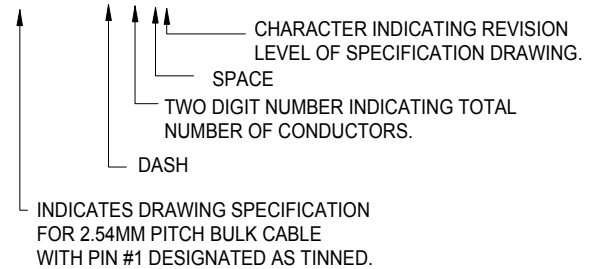


REVISIONS			
LTR	DESCRIPTION	DATE	APPRVD
-	INITIAL RELEASE	4/12/00	
A	ADDED CURRENT RATING AND DIELECTRIC STRENGTH	6/2/00	



## PART NUMBERING SYSTEM

PS-1635-XX A



i.e. PS-1635-20 -  
(INDICATES 20 POS. CABLE, 2.54MM PITCH, COND. #1 TINNED)

- 1) BULK CABLE SPECIFICATION FOR 2.54MM PITCH FLAT LAMINATED CABLE.
- 2) NUMBER OF CONDUCTORS AVAILABLE 1 THROUGH 99
- 3) CONDUCTOR NUMBER 1 IS DISTINGUISHED FROM REMAINING CONDUCTORS BY TIN PLATING. IT IS VISIBLE, AS SUCH, THROUGH POLYESTER INSULATION.
- 4) INSULATION: 0.002" THICK POLYESTER WITH FLAME RETARDANT ADHESIVE.
- 5) CONDUCTORS: 0.003" X 0.050" FLAT COPPER, POS. #1 IS TIN PLATED (27 AWG EQUIVALENT)
- 6) U.L. RATING: AWM STYLE 2643, 105°C, VW-1, 300V
- 7) CURRENT RATING: 3A MAXIMUM
- 8) DIELECTRIC STRENGTH: 2500V/MIL
- 9) WHEN ORDERING, USE PART NUMBERING SYSTEM DESCRIBED TO DETERMINE NUMBER OF CONDUCTORS REQUIRED
- 10) CABLE WIDTH= (NUMBER OF CONDUCTORS +1 ) X 0.100"

MATERIAL		<b>P</b> ARLEX CORPORATION One Parlex Place Methuen, Ma 01844 LAMINATED CABLE DIVISION			
TOLERANCES		SPECIFICATION DRAWING FOR BULK CABLE, 2.54MM PITCH, COND. #1 TINNED, MATCHING STANDARD AMP REQUIREMENTS FOR .100" CENTERLINE FFC			
DR	C.Dobens	DATE	4/12/00	SIZE	B
CHK		ENG	C.Dobens	FSCM	18377
.XXX ±		APPD		<b>PS-1635</b>	
.XX ±				Rev.	A
ANGLES ±		SCALE	NA	SHEET 1 OF 1	