

A-I-5.8 LL Series

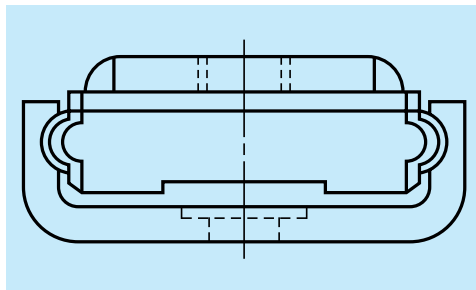
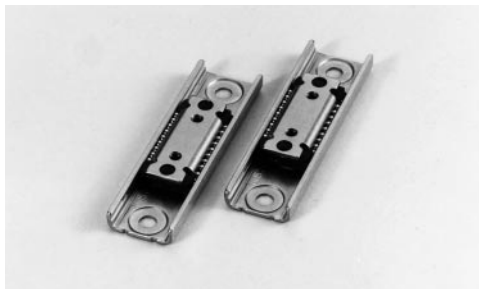


Fig. I-5-23 LL Series

(1) Super light-weight, and compact

This compact guide has a single ball groove on both right and left sides (gothic arch). Rails and ball slides are made of stainless steel plate, therefore they are lightweight.

Also, the ball groove is made outside the ball slide to reduce overall size and to obtain high speed.

(2) Stainless steel is standard.

Rails and bearings are made of martensitic stainless steel.

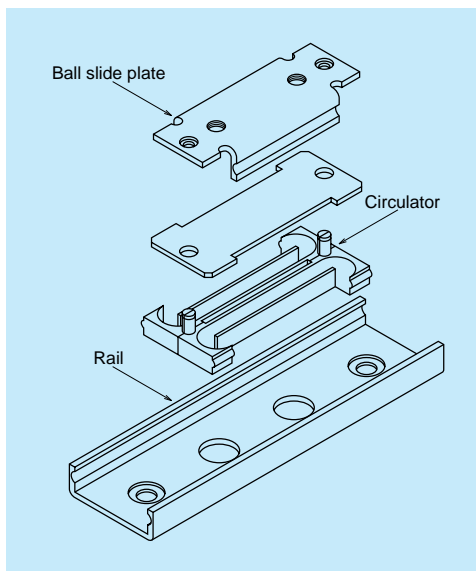


Fig. I-5-24 LL Series structure

Dimensions of LL Series

LL (Miniature, light-weight)

• Specification number

LL 15 060 PL 1 - PN Z0
 Model number Rail length (mm) Ball slide shape Number of ball slides per rail

Preload: Only Z0 fine clearance is available.
 Accuracy grade: Only PN normal grade is available.

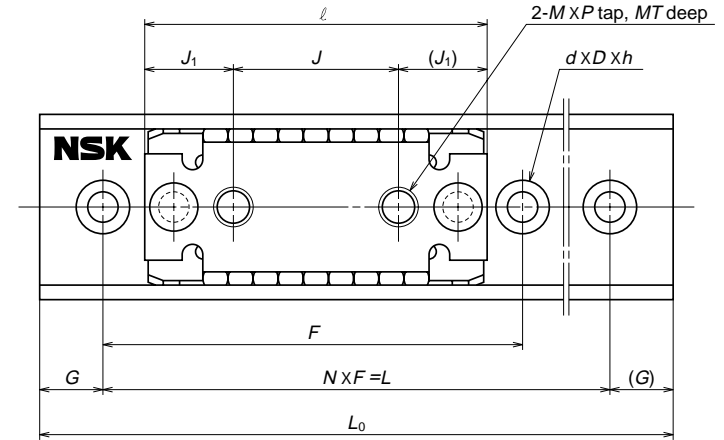
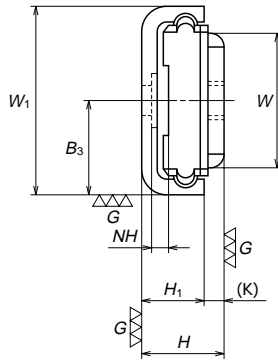


Table. I-5-35

Model No.	Assembly		Ball slide							Height	Pitch	N
	Height	W ₁	Width	Length	Mounting tap hole			H ₁	F			
					J	M x pitch	MT					
LL15	6.5	15	10.6	27	13	M3x0.5	1.2	7	1.5	5	30	1
											40	1
											30	2
											40	2
											50	2

Remarks:

1. LL Series does not have a ball retainer. Be aware that the balls fall out when a bearing is withdrawn from the rail.
2. Seal is not available. Please provide the dust-prevention measures on the equipment.
3. Do not use an installation screw on the ball slide which exceeds MT (maximum screw depth allowance) in the dimension table.

Unit: mm

Rail					Basic load rating					Ball dia.	Weight	
Mounting bolt hole	NH	B ₃	G	Rail length	Dynamic	Static	Static moment			D _w	Ball slide	Rail
					C	C ₀	M _{RO}	M _{PO}	M _{YO}			
d x D x h				L ₀	(N[kgf])		(N · m[kgf · m])				(g)	(g)
2.4x5x0.4	1.2	7.5	5	40	880	785	7	3	3	2	6	9
				60								11
				75								13
				90								16
				120								21