



[ 2 YEAR WARRANTY ]

## PM500 SERIES

Single, dual and triple output

- Encapsulated package
- 1 to 10.5W units
- 115VAC input (230VAC version, see PM500CE series)
- PCB mounting
- Short circuit protection
- UL and CSA safety approvals

The PM500 series is an encapsulated, board mountable linear AC/DC power module. The series has single, dual and triple output models with industry standard output configurations operating from an input voltage of 115VAC, making the PM500 series suitable for a wide range of low power PCB applications. The PM500 series includes 1W to 10.5W modules. Each module has short-circuit protection and the 5V outputs also have overvoltage protection. Conservative design and rating of these modules results in reliable operation and long life. The PM500 design is a low emissions design with tightly regulated outputs making the series especially suitable for test, measurement and instrumentation equipment. The series also includes 2 sub-miniature modules for low power applications where space is critical.


## SPECIFICATION


All specifications are typical at nominal input, full load at 25°C unless otherwise stated

OUTPUT SPECIFICATIONS		
Voltage accuracy		±1.0% max.
Voltage adjustability (See Note 1)	PM529 and PM563 only	Yes
Line regulation		See table
Load regulation		See table
Temperature coefficient		±0.02%/°C
Overvoltage protection	See table on facing page for relevant models	6.2V typical
Output power limit	Typical	130% to 200% FL
Short circuit protection	Switch off/on	100% to 200% FL
INPUT SPECIFICATIONS		
Input voltage range		115 ±10VAC
Input frequency range	(See Note 3)	47Hz to 400Hz
Safety ground leakage current	50Hz	Less than 3.5mA

GENERAL SPECIFICATIONS		
Efficiency		40% typical
Isolation voltage		700VAC
Approvals and standards	(See Note 5)	UL478 CSA C22.2 No. 143 No. 154
Case material	UL94V-0	Non-conductive black plastic
Weight	Case A Case B1 Case B2 Case B3 Case H	181g (6.4oz) 340g (12oz) 408g (14.4oz) 635g (22.4oz) 227g (8oz)
MTBF (See Note 4)		710,000 hours
ENVIRONMENTAL SPECIFICATIONS		
Thermal performance	Operating amb. Non-operating amb. Derating, 50°C to 71°C Cooling	-25°C to +71°C -25°C to +85°C 2.5%/°C Free-air convection cooled
Relative Humidity	Non-condensing	20% to 95% RH

### International Safety Standard Approvals

 UL478 Reg. File No. E131987

 CSA C22.2 No. 143 and No. 154 Reg. File No. LR41062C

# 1 to 10.5 Watt AC/DC encapsulated modules

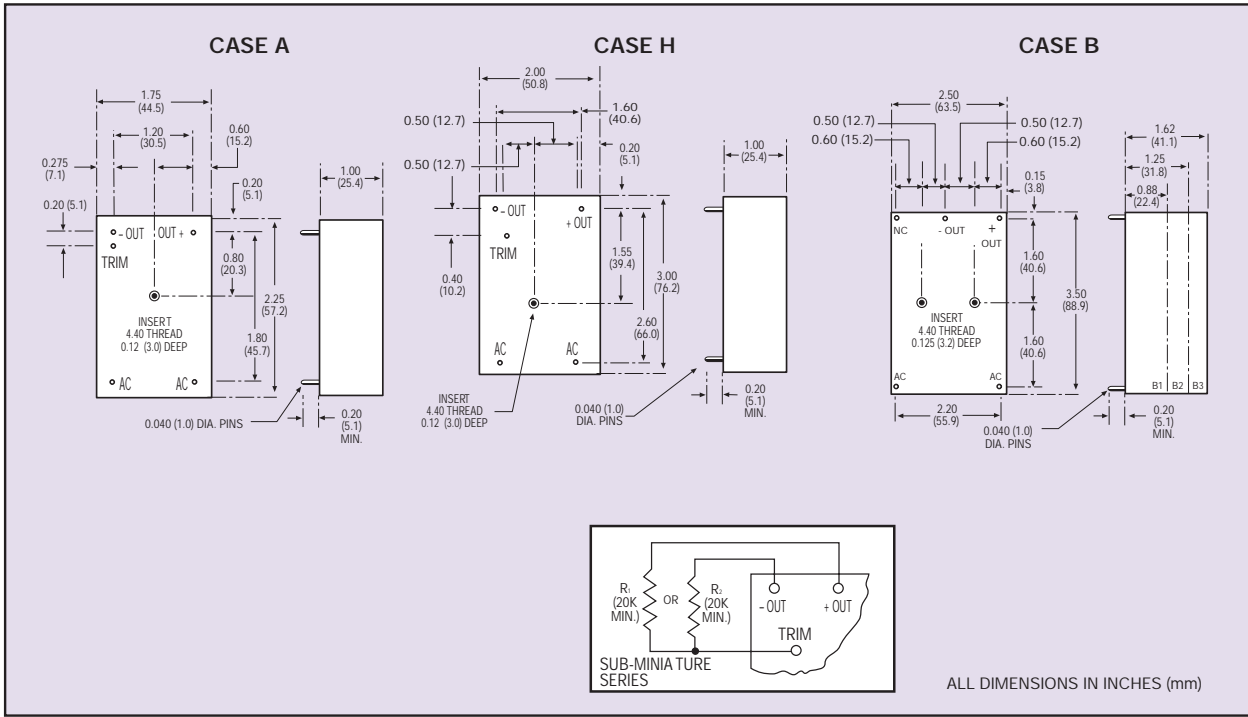
OUTPUT VOLTAGE	OUTPUT CURRENT	OVP	REGULATION		RIPPLE AND NOISE	CASE	MODEL NUMBERS
			LINE	LOAD			
SINGLE OUTPUT							
5VDC	500mA	Yes	±0.02%	±0.04%	1mV rms	B1	PM534
5VDC	1000mA	Yes	±0.02%	±0.04%	1mV rms	B2	PM542
5VDC	2000mA	Yes	±0.02%	±0.05%	1mV rms	B3	PM545
12VDC	240mA	No	±0.02%	±0.02%	0.5mV rms	B2	PM515
SUB MINIATURE SINGLE OUTPUT SERIES <sup>(1)</sup>							
5VDC	250mA	No	±0.05%	±0.05%	0.5mV rms	H	PM529
12VDC	100mA	No	±0.02%	±0.02%	0.5mV rms	A	PM563
DUAL OUTPUT							
±12VDC	±120mA	No	±0.02%	±0.02%	0.5mV rms	B1	PM536
±12VDC	±400mA	No	±0.02%	±0.02%	0.5mV rms	B3	PM597
±15VDC	±25mA	No	±0.20%	±0.20%	2mV rms	B1	PM538
±15VDC	±100mA	No	±0.02%	±0.02%	0.5mV rms	B1	PM505
±15VDC	±200mA	No	±0.02%	±0.02%	0.5mV rms	B2	PM565
±15VDC	±350mA	No	±0.02%	±0.02%	1mV rms	B3	PM501
TRIPLE OUTPUT <sup>(2)</sup>							
5V/±12VDC	300/±180mA	No	±0.02%	±.05%/±.02%	0.5mV rms	B2	PM595S
5V/±12VDC	1000/±150mA	Yes	±0.02%	±.01%/±.02%	1.0/0.5mV rms	B3	PM592
5V/±15VDC	300/±150mA	Yes	±0.05%	±.10%/±.05%	0.5mV rms	B2	PM594
5V/±15VDC	500/±100mA	Yes	±0.05%	±.10%/±.05%	0.5mV rms	B2	PM590
5V/±15VDC	1000/±150mA	Yes	±0.02%	±.01%/±.02%	1.0/0.5mV rms	B3	PM593

## Notes

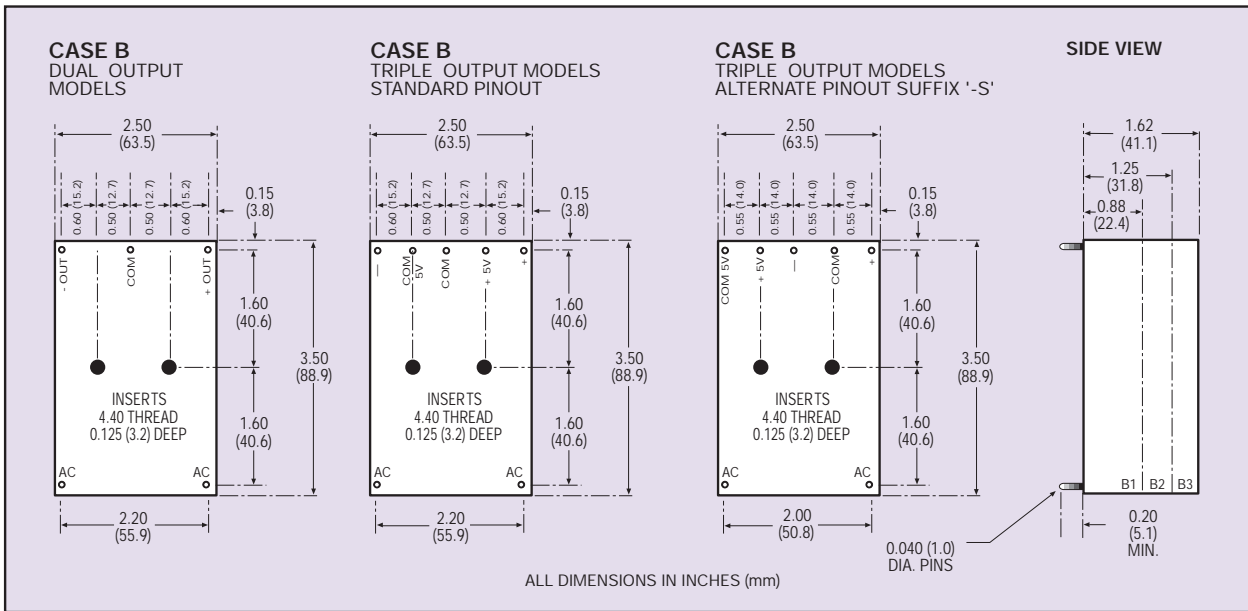
- Trim connection on all sub-miniature series modules provides a means of externally adjusting a units output voltage precisely to its labelled value. To raise the output voltage, connect a resistance (20kΩ, min.) between the trim terminal and the positive (+) output terminal. To lower the output voltage, connect a resistance (20kΩ, min.) between the trim terminal and the negative (-) output terminal.
- Triple output models only: on standard pin-out models the 5V output common is isolated from the ±12VDC or ±15VDC common.
- Some units should be derated for operation at 400Hz. Please contact the factory for details.
- M.T.B.F. figures are based on actual product performance. Consult factory for details.
- All models are only for inclusion by professional installers within other equipment and must not be operated as a stand alone product.

# 1 to 10.5 Watt AC/DC encapsulated modules

## Single output PM500 series



## Dual and triple output PM500 series



Data Sheet © Artesyn Technologies® 2000  
 The information and specifications contained in this data sheet are believed to be correct at time of publication. However, Artesyn Technologies accepts no responsibility for consequences arising from printing errors or inaccuracies. Specifications are subject to change without notice. No rights under any patent accompany the sale of any such product(s) or information contained herein.