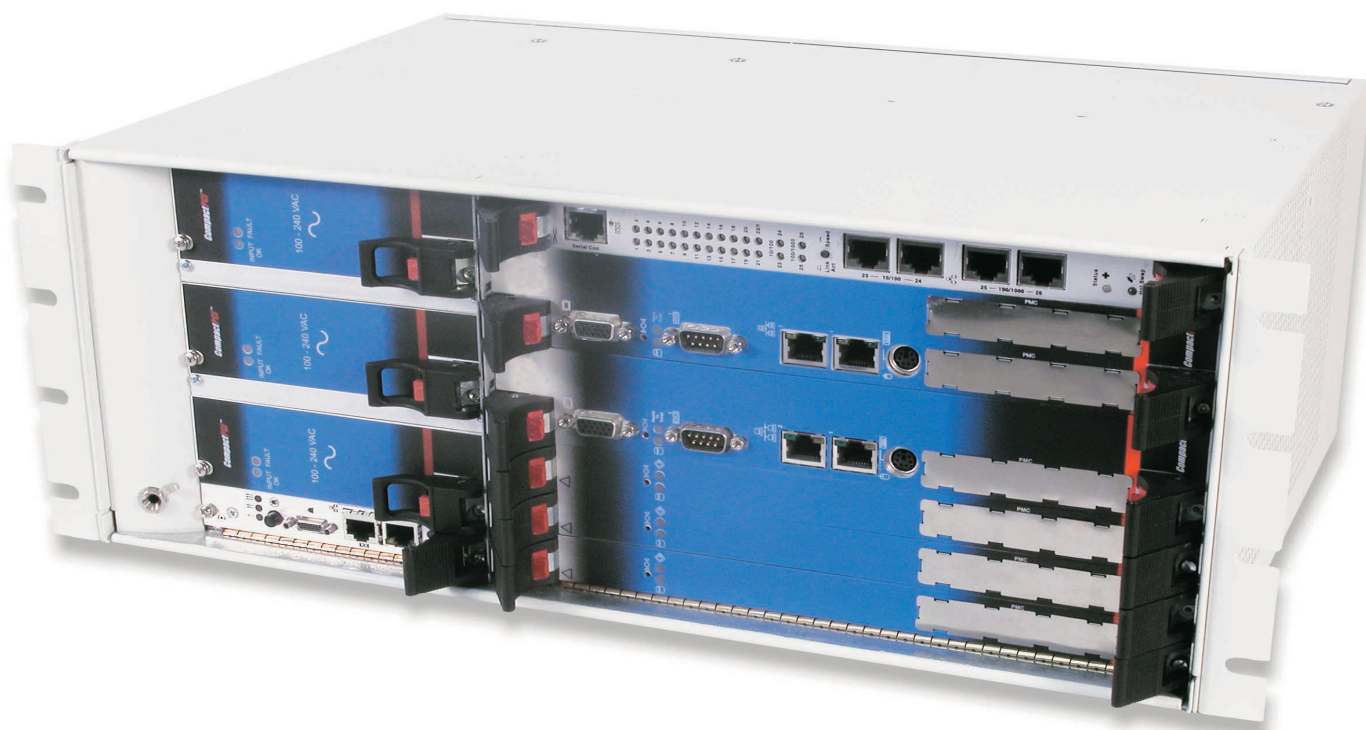


XL-LP41

cPCI PICMG 2.16

compliant 4U Platform



Kontron's XL-LP41 is designed for applications requiring availability, performance, and flexibility in an environment with tight space constraints. It is providing OEM equipment designers with standards-based development solutions built on the PICMG 2.16 specification and the H.110 telephony bus. This high-density CompactPCI platform features seven node slots and one integrated layer 2/3 Ethernet switch slot, transversely mounted in a 4U enclosure, making it ideal for carrier-grade telecom and datacom applications as well as other rugged applications. The XL-LP41 platform is modular, scalable, and ready for immediate development.

- Rugged 4U, 19inch rack-mount Platform
- Efficient side-to-rear cooling
- Two load-sharing, hot swappable 250W Power Supplies (3rd PSU optional for N+1 configuration)
- PICMG 2.16 Compliant
- IPMI Chassis Management Module (CMM) (Optional)
- H.110 bus on six peripheral slots

Specifications

... learn about the tremendous feature set

Backplane Configuration

- Eight-slot (seven node slots and one dedicated switched fabric slot) backplane designed to the PICMG 2.16 specification
- Single PCI segment with one system + six peripheral slots
- Eight slots of rear-panel I/O
- Configurable for 3.3V or 5V I/O operation

Physical

- Height: 7.0" (178 mm)
- Width: 17.2" (436 mm) without rack-mount flanges. Rack-mount flanges allow mounting in 19-inch racks.
- Depth: 12.25" (311 mm)
- Weight: 28.5 lb. (base configuration with two power supplies)
- Weight: 30.5 lb. (with optional third power supply and optional ZT 7102 management module)

Power

- AC Input: 110 or 220 VAC (50 to 60 Hz)
- Output†: 80A†† @ +3.3VDC; 80A†† @ +5VDC; 11A @ +12VDC; 1A @ -12VDC
- DC Input: 36 to 60 VDC
- Output†: 80A†† @ +3.3VDC; 80A†† @ +5VDC; 11A @ +12VDC; 1A @ -12VDC

† Assumes only two supplies are operating. An optional third supply can be purchased to provide N+1 redundancy.

†† Total combined output from 3.3V and 5V not to exceed 80A

Environmental

- Temperature (non-operating): -40° C to +70° C
- Voltage: +/-5% with 50mV max ripple
- Temperature: +5° C to +40° C
- Radiated and conducted emissions shall not cause the system to fail any tests
- Humidity: 95% @ 40° C non-condensing



The XL-LP41 platform is designed with the following standards:

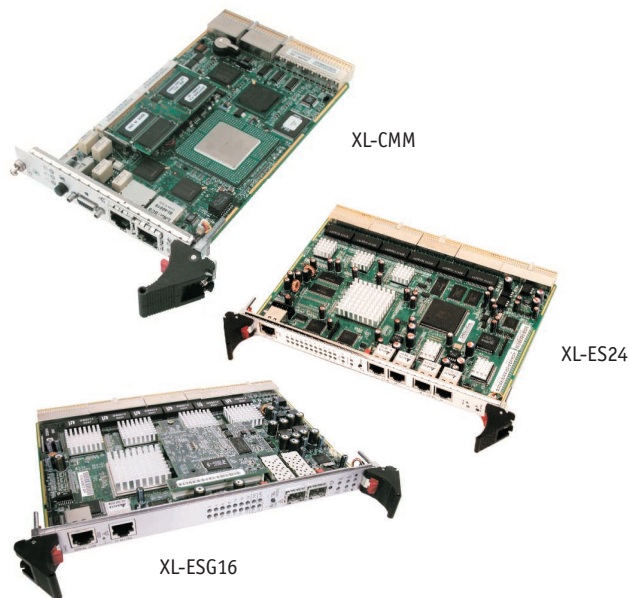
- CompactPCI* Core Specification, PICMG* 2.0 R2.1
- CompactPCI Hot Swap, PICMG 2.1 R2.0
- CompactPCI Computer Telephony, PICMG 2.5 R1.0
- CompactPCI System Management, PICMG 2.9
- CompactPCI Power Interface, PICMG 2.11
- CompactPCI Packet Switching Backplane Specification, PICMG 2.16
- IPMI 1.5 Specification

XL-CMM: Chassis Management Module (optional)

The XL-CMM Chassis Management Module, designed to IPMI 1.5 standards, monitors complete system status including sensors, fans, temperature and voltage. It communicates using an IPMB to achieve comprehensive management. An out-of-band 10/100 Ethernet port dedicates a network exclusively for management, thus avoiding impact to traffic on the primary network.

XL-ES24 and XL-ESG16: Ethernet Switch Boards (optional)

The XL-LP41 platform supports one switched fabric board designed to the PICMG 2.16 standard such as the Kontron's XL-ES24 and XL-ESG16 Switches. Those high-performance Managed Layer 2/3 switch feature 24 10/100 Mbps (XL-ES24) or 16 10/100/1000 Mbps (XL-ESG16) Ethernet ports for fast connection speeds.



Corporate Offices

US/ Canada
6260 Sequence Drive
San Diego, CA 92121-4371
Tel.: 1(888) 294-4558
Fax: 1(858) 677-0898
sales@us.kontron.com

Europe, Middle East and Africa
Oskar-von-Miller-Straße 1
85386 Eching/Munich Germany
Tel.: +49 (0) 8165 77 0
Fax: +49 (0) 8165 77 219
sales@kontron.com

Asia Pacific
6F, No. 9, Lane 235, Pao-Chiao Rd.,
Hsin-Tien, Taipei Hsien, 231 Taiwan
Tel.: +88 62 29 10 35 32
Fax: +88 62 29 10 34 82
sales@kontron-asia.com



Our worldwide sales representatives and partners can be found on our websites.

<http://www.kontron.com>