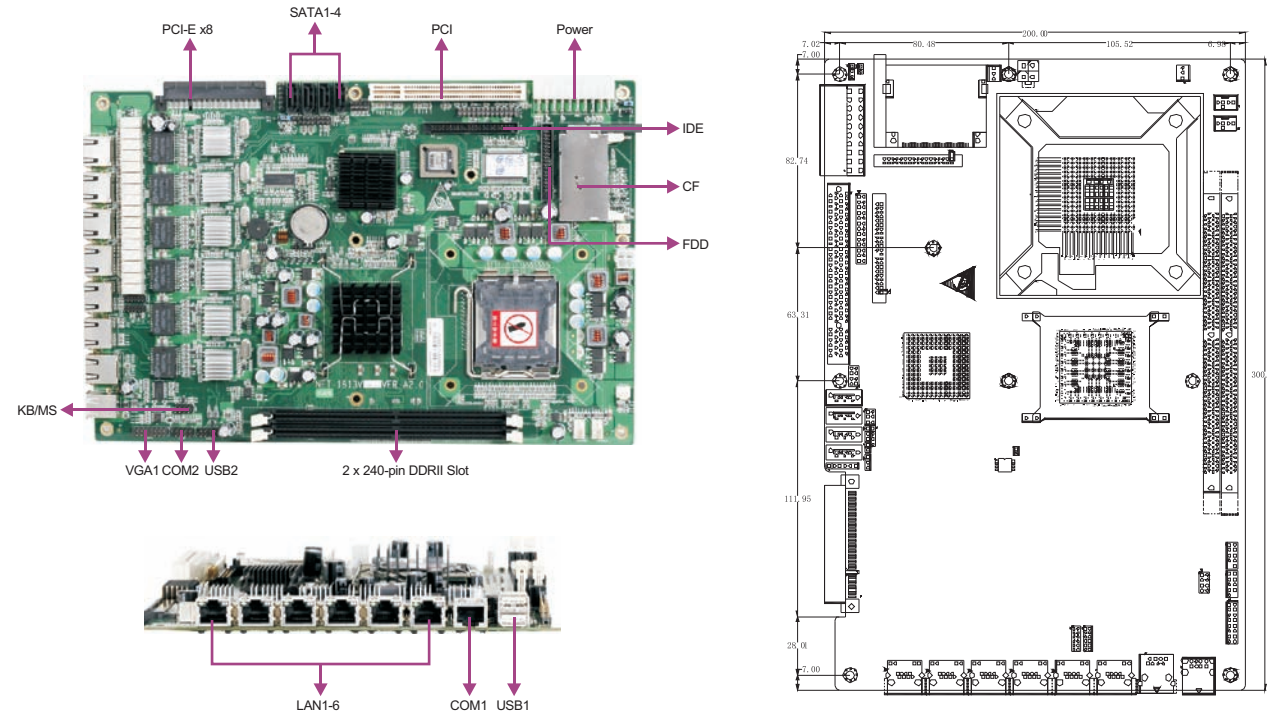
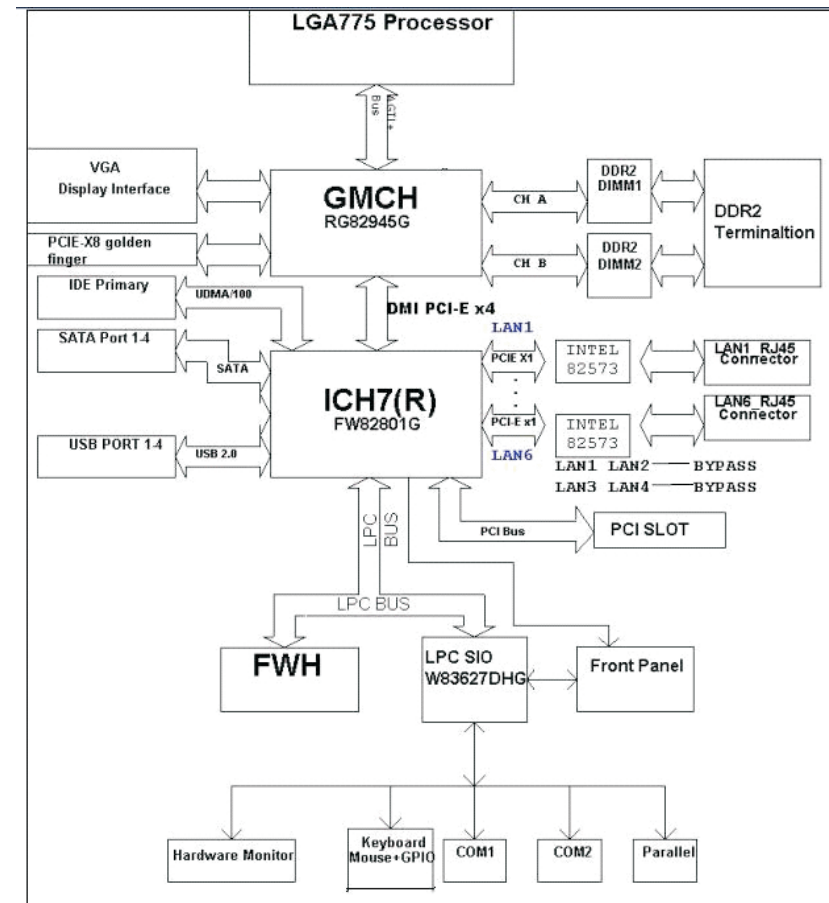


NET-1813VD6N-03

Network Application SBC with VGA/SSD/LAN/COM/BYPASS



Board Diagram



Features

- Support Celeron D, Pentium 4, Pentium D, Conroe LGA775 CPU
- Intel 945G+ICH7-R
- Provides two 240-Pin DDRII 533/667MHz memory slots, which support memory capacity up to 4G
- There are six 10/100/1000Mbps LAN ports on NET-1813VD6N-03 motherboard, among which LAN1 & LAN2, LAN3 & LAN4 support bypass function



Specifications

System	
Processor	Support Celeron D, Pentium 4, Pentium D, Conroe LGA775 CPU
Chipset	Intel 945G+ICH7-R
Memory	Provides two 240-Pin DDRII 533/667MHz memory slots, which support memory capacity up to 4G
Hardware Monitor	Monitors system status, voltage, temperature and fan speed
Watchdog Timer	1~255 sec./min. timer system reset or interrupt, setup by software
Expansion Interface	One 5V 32-bit PCI slot supports expansion of three PCI slots, one PCI-E x8
Storage	
IDE	One ATA33/66/100 IDE interface
Serial ATA	4 x Serial ATA
Floppy	1 x Floppy
CF	1 x CF
DOC/DOM	N/A
I/O Interface	
USB	4 x USB2.0
Serial Port	Two RS-232 serial ports, among which COM1 is revealed via RJ45 interface and COM2 is on board via pin style
Parallel Port	1 x LPT
IrDA	N/A
GPIO	One 4-lane output programmable interface for user-defined LED
Audio	N/A
Keyboard/Mouse	1 x PS/2

Display	
Chipset	Intel 945G integrated graphics controller
Resolution	VGA mode up to 2048 x 1536@75Hz
Dual Display	N/A

Ethernet	
Chipset	6 x Intel82573
Speed	10/100M/1000Mbps
Connector	6 x RJ45

Mechanical and Environmental	
Dimensions	300mm x 200mm
Operating Temperature	0°C~60°C
Storage Temperature	-25°C~75°C
Operating Humidity	5%-95%, non-condensing

Power	
Power Supply	Supports ATX power supply

Operating System	
Windows OS	Windows 98/Windows 2000/ Windows XP
Embedded OS	Linux

Available Accessories

Part Number	Name	Description	Qty.
2412-000331	Setup Guide/RoHS	AMI/BIOS Setup Guide (For CORE/8 only)/VER:A1	1
2360-018011	SATAHDD cable/RoHS	SATA-7P female to SATA-7P female/with clip/2725/L=300mm	1
2360-018181	PS/2 converter cable/RoHS	DuPont 2*4(2.54) to PS/2 keyboard/mouse port/L=250	1
2360-005711	COM converter cable/RoHS	RJ45 to COM(male)/L=550	1
2360-008351	COM cable/RoHS	10P/2.54 DuPont to DB9 pin-type, without bracket/L=300	1
2360-015971	USB2.0 converter cable/RoHS	DuPont connector to dual-USB port/with UL WH label/L=300/Beige	1
2360-017631	(TG) Flat cable/RoHS	40P(2.54) to DuPont 44P(female)(2.0)/L=300	1
2360-009451	Flat cable/RoHS	34P FDD cable(2.0)/L=455	1
2192-011061	CD/Protective film/Chinese and English versions/RoHS	NET-1813 Series/VER:C00	1
2413-012631	User Manual (Chinese and English)/RoHS	NET-1813 Series/VER:A1	1
2330-000041	Jumper/RoHS	Pitch 2.54, blue	4
2360-019281	LPT cable/RoHS	DB25 blue crimp-type female to DuPont 2*13 female/L=550mm	1
2360-014831	VGA converter cable/RoHS	2*8(female) DuPont connector to DB15(female)/VGA converter cable/L=300	1
2360-030141	(TG)VGA converter cable/ NS-TECH/RoHS	2*8(female) DuPont connector to DB15(female)/VGA converter cable/L=300	1

Ordering Information

Part Number	Model Number	Description
0030-010921	NET-1813VD6N-03	There are six 10/100/1000Mbps LAN ports on NET-1813VD6N-03 motherboard, among which LAN1 & LAN2, LAN3 & LAN4 support bypass function