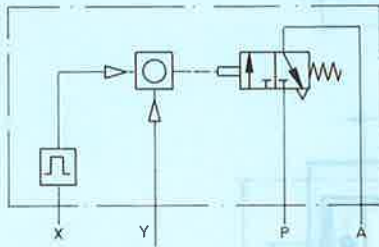


Long-delay timer

with digital mode of operation

Type PZVT-999-SEC-B
PZVT-99 999-MIN-B



These digital units are a combination of a pneumatic time-pulse generator and an adjustable counter with stationary pre-select. This makes it possible to set times from 1 to 999 seconds or from 1 to 99 999 minutes.

The pulse generator is started by means of a pneumatic signal at X. A pneumatic winding cylinder winds up a timer memory which then runs down under the control of a mechanical governor.

The seconds or minutes which have expired are displayed in the counter window (additive mode of counting). The pre-selected time is continuously visible in the preselect window.

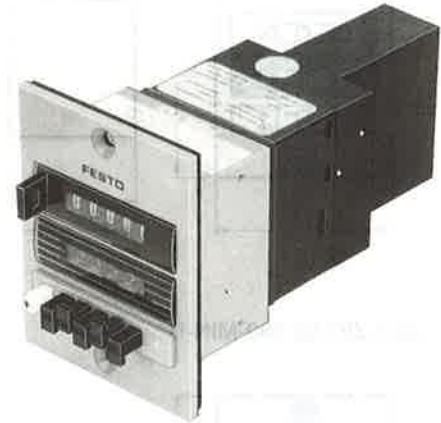
Once the pre-selected time has been reached and provided that there is compressed air at P, an output signal is generated at A. This signal is maintained until the timer is reset to zero by means of a signal at Y.

Accessories:

Protective cover with rotary knob
Type PZ-SK-2

Protective cover with lock
Type PZ-SS-2

For protective covers see Sheet 3.285



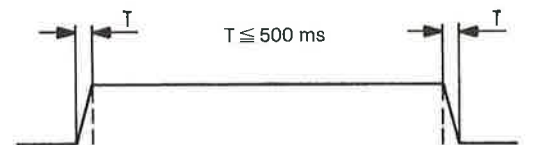
Times are pre-selected by pressing the white locking button and simultaneously keying-in the pre-selected value. The pre-selected time setting is retained when the timer is reset.

It is possible to alter the pre-selected value while the timer is running.

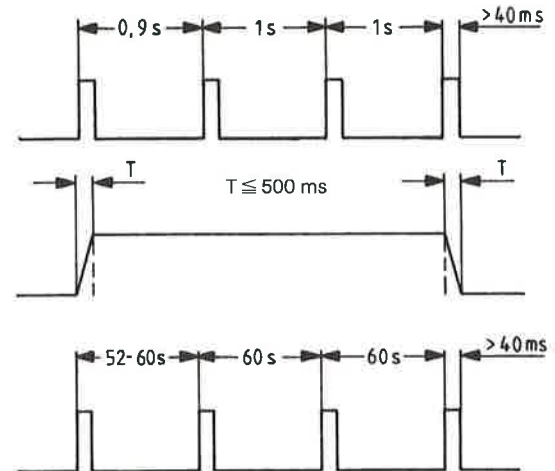
9

Function sequence under normal conditions

Type PZVT-999-SEC-B

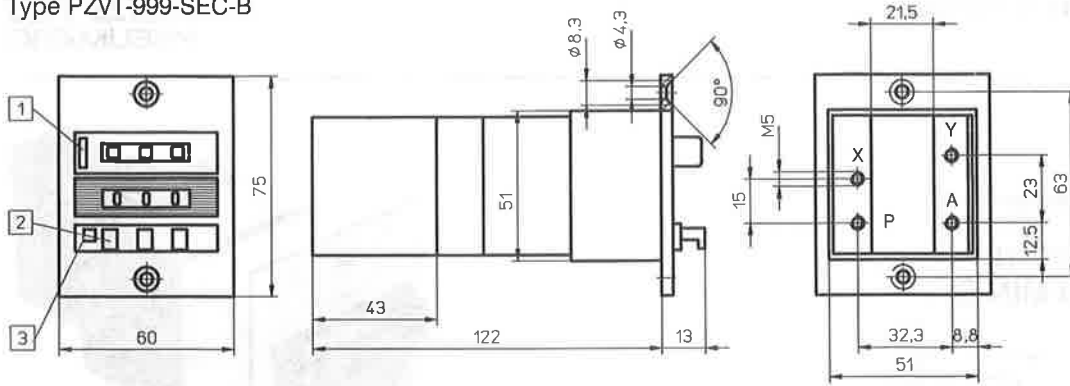


Type PZVT-99 999-MIN-B

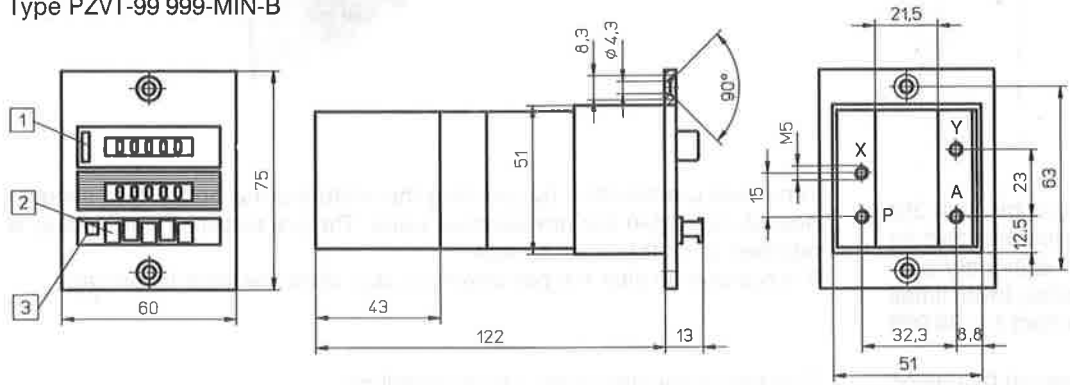


Order code	Part No./Type	13 988 PZVT-999-SEC-B	13 989 PZVT-99 999-MIN-B
Medium		Compressed air, filtered, unlubricated	
Design		Pneumatic adjustable timer with time-pulse generator	
Mounting		Front-panel mounting	
Display		3-figure, height of figures 4 mm	5-figure, height of figures 4 mm
Connection	working ports	M 5	
	pilot port	M 5	
Operating pressure range		2 to 6 bar	
Pilot pressure range		2 to 6 bar	
Adjustable time delay		1 to 999 s (max. 16.6 min)	1 to 99 999 min (max. 69.4 days)
Reset time		180 ms	
Temperature range		0 to +60 °C	
Material		Housing: plastic	
Weight		0.226 kg	0.230 kg

Type PZVT-999-SEC-B



Type PZVT-99 999-MIN-B



- ① Reset button
- ② Pre-select buttons
- ③ Locking button
- P = supply port
- A = output port
- X = pilot port
- Y = reset signal