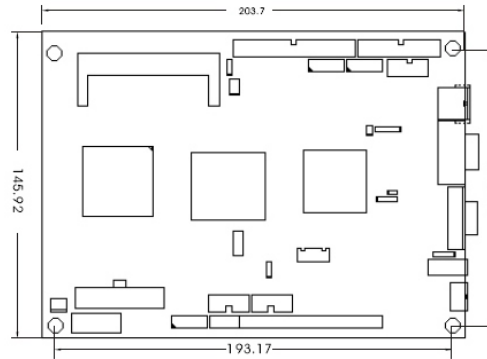
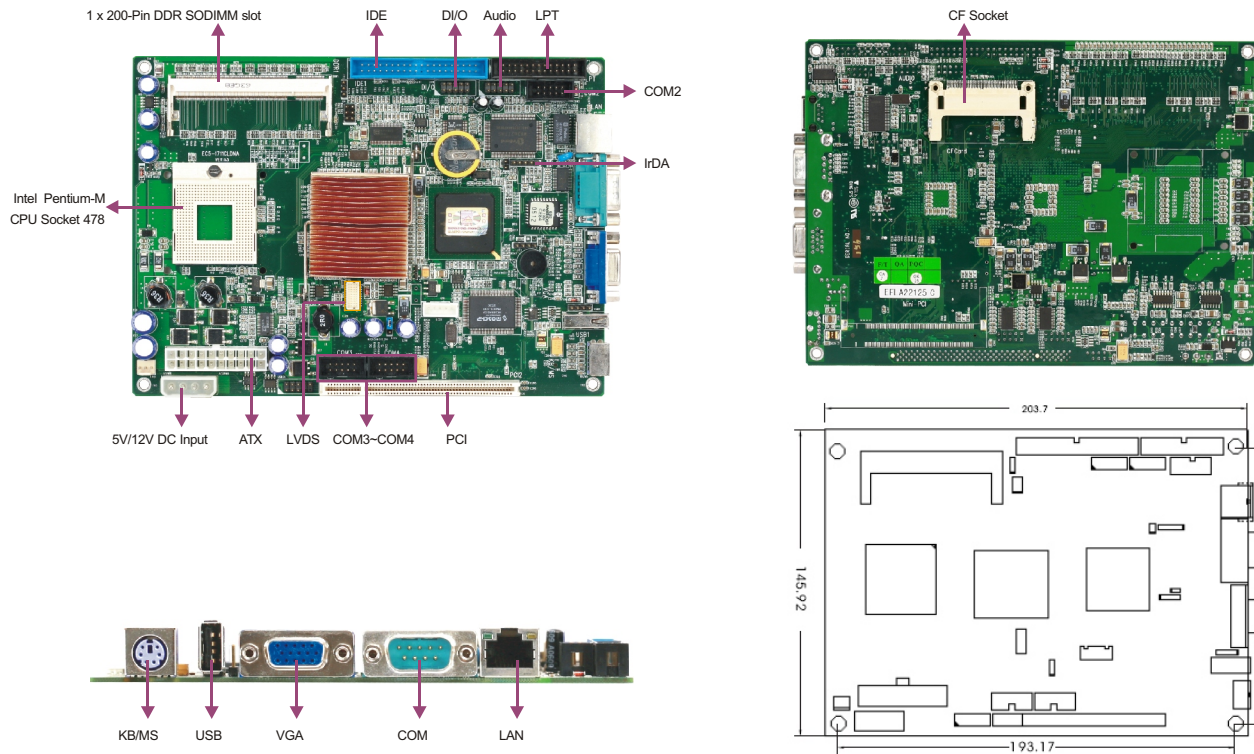


# EC5-1711CLDNA

EPIC SBC with CPU and LCD/VGA/SSD/LAN/Audio



## Features

- Pentium® M and Celeron® M series low-power processor
- Intel® 855GM integrates graphic chip, supporting VGA + LVDS dual display
- Standard mini-PCI expansion bus, 1 x standard PCI slot
- 4 x USB2.0 ports
- 4 x COM ports

## Specifications

System	
Processor	Supports Intel® Pentium® M or Celeron® M socket 478 series low-power processor
Chipset	Intel® 855GME + 82801DB chipset
Memory	1 x 200-pin SO-DIMM Socket, DDR 333MHz up to 1GB
Watchdog Timer	1~255 sec./min. timer system reset or interrupt, setup by software
Expansion Interface	1 x 124-pin mini-PCI slot, 1 x standard PCI slot
Storage	
IDE	1 x 40-pin Ultra ATA/100 interface
Serial ATA	N/A
Floppy	N/A
CompactFlash	1 x CompactFlash socket
DOC/DOM	N/A
I/O Interface	
USB	4 x USB2.0 Port
Serial Port	4 x RS-232
Parallel Port	1 x LPT
IrDA	115Kbps IrDA interface
GPIO	4-channel digital input/output
Audio	AC'97 audio. Supports Speaker-out, Mic-in and Line-in

Display	
Display Controller	Intel® 855GME integrated graphics acceleration controller at 133MHz. Supports DVMT2.0
Display Memory	64MB shared memory
Resolution	VGA mode: up to 1600 x 1200@85Hz and 2048 x 1536@75Hz / LVDS mode: up to 1600 x 1200@60Hz with 18bpp
Display	VGA + LVDS dual display

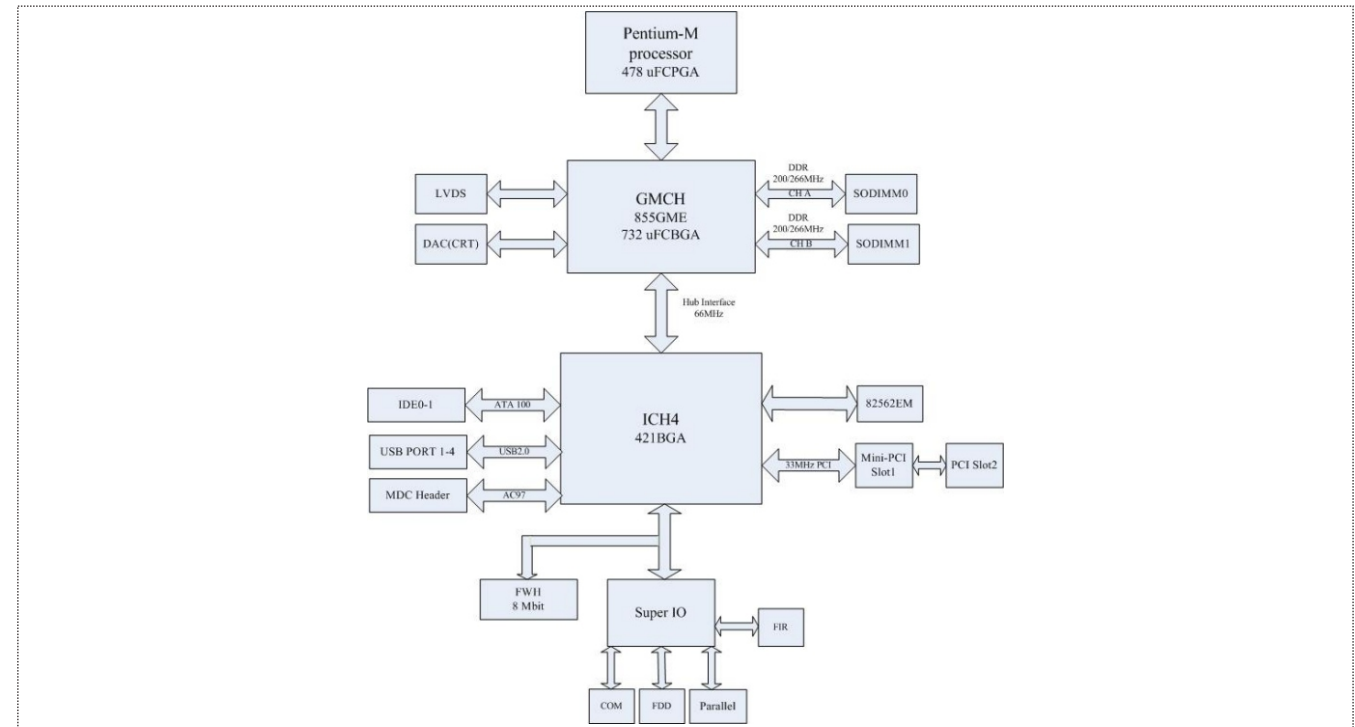
Ethernet	
Ethernet Controller	1 x Intel® 82562ET Ethernet controller
Speed	10/100Mbps
Connector Interface	1 x RJ45

Mechanical and Environmental	
Dimensions	203mm x 146mm
Operating Temperature	0°C~60°C
Storage Temperature	-20°C~60°C
Operating Humidity	5%-90%, non-condensing

Power	
Power Supply	Supports AT/ATX power supply, automatically identifying AT/ATX power
Power Consumption	N/A

Operating System	
Windows OS	Windows NT 4.0/Windows 98SE/Windows 2000/Windows XP
Embedded OS	Linux/XP Embedded/WinCE

## Board Diagram



## Available Accessories

Part Number	Name	Description	Qty.
—	Driver CD/Protective film/RoHS	EC5-1711CLDNA	1
2330-000041	Jumper/RoHS	2.54mm pitch, blue	6
2342-002421	Cooler/PGA-specific/RoHS	ALPM21-2B(GP)50 x 50 x 35 backplate screws with liquid bond	1
2360-002571	Dual USB ports with bracket/B4/RoHS	Two USB ports to one 2 x 5 Pin, length: 210mm/RoHS	1
2360-005031	Y-cable for keyboard and mouse/RoHS	One minDIN port to two PS/2 ports, length: 250mm/RoHS	1
2360-008331	Parallel flat cable/RoHS	DMA66/HDD/CABLE/40P/80-line/length: 450mm	1
2360-010011	Serial cable/RoHS	DB9 connector to 2 x 5 Pin, length: 265mm/RoHS	3
2360-010161	Parallel port cable with bracket/RoHS	DB25 connector to 2 x 13 Pin, length: 265mm/RoHS	1
2360-011141	Audio cable with bracket/RoHS	Three audio connectors with bracket to 2 x 5 Pin, length: 300mm/FSC-1731VNRA	1
—	Setup Guide/RoHS	AMI/BIOS Setup Guide (for CORE8)	1
—	User's Manual/RoHS	EC5-1711CLDNA	1

## Ordering Information

Part Number	Model Number	Description
0030-001491	EC5-1711CLDNA	Motherboard/RoHS
0030-001490	EC5-1711CLDNA	Motherboard
0030-006010	EC5-1711CLDNA/MINIPCI	Motherboard/MINIPCI
0030-006011	EC5-1711CLDNA/MINIPCI	Motherboard/MINIPCI/RoHS