

R.F. PERFORMANCE TABLE



THE CLASS 7
SUBMINIATURE HIGH
RELIABILITY INDUSTRIAL
GRADE RELAY HAS
EXCELLENT R.F.
SWITCHING
CHARACTERISTICS.

FREQUENCY (MHZ)	INSERTION LOSS (DB) COMMON TO N.O. OR N.C. CONTACTS	VSWR COMMON TO N.O. OR N.C. CONTACTS	ISOLATION (DB) N.O. OR N.C. CONTACTS TO COIL
10	0.05	1.03:1	65
50	0.10	1.04:1	50
100	0.30	1.05:1	42
200	0.50	1.06:1	35
300	0.60	1.07:1	31
400	0.65	1.08:1	29
500	0.75	1.10:1	28

- * AVAILABLE WITH SPDT OR DPDT BIFURCATED GOLD CLAD SILVER-PALLADIUM CROSS BAR CONTACTS- RATED FOR LOW LEVEL TO 2.0 AMP SWITCHING.
- * REQUIRES ONLY .155 SQUARE INCH OF CIRCUIT BOARD SPACE.
- * TOTAL VOLUME OF SLIGHTLY MORE THAN A CUBIC CENTIMETER.
- * CONFORMS TO FCC PART 68.302. 1500 V PEAK SURGE RESISTANCE.
- * CONFORMS TO FCC PART 68.304. 1000 V DIELECTRIC WITHSTANDING VOLTAGE.

GENERAL SPECIFICATIONS (@ 25°C)



	UNITS	
COIL		
Pull-in Voltage AC (50/60 Hz):≤	% of nominal	Not applicable
Pull-in Voltage DC:≤	% of nominal	80
Dropout Voltage AC (50/60 Hz):≥	% of nominal	Not applicable
Dropout Voltage DC:≥	% of nominal	10
Maximum Voltage:	% of nominal	120
Resistance:	% ±	10
Coil Power AC (60 Hz):	VA	Not applicable
Coil Power DC:	W	0.2
Maximum Coil Dissipation, DC:		0.75 Watt (DC)
CONTACTS		
Contact Material:	A	Gold clad silver
Contact Rating AC Amperes (AC1):	V	STST 2, DPDT 0.6
Contact Rating AC Voltage:	A	STST 120, DPDT 100
Contact Rating DC Amperes (DC1):	V	2
Contact Rating DC Voltage:	VA	24
TIMING		
Operate Time:	ms	4
Release Time:	ms	5
DIELECTRIC STRENGTH		
Coil to Contacts:	V rms	500
Across Open Contacts:	V rms	500
Pole to Pole:	V rms	500
Contacts to Frame:	V rms	Not applicable
Insulation Resistance:	megohms minimum @VDC	1000 @ 500

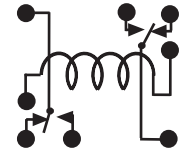
	UNITS	
VIBRATION RESISTANCE		
Functional:	g's	15
SHOCK RESISTANCE		
Functional:	g's	50
TEMPERATURE		
Operating, AC Lower:	°C	Not applicable
Operating, AC Upper:	°C	Not applicable
Operating, DC Lower:	°C	-35
Operating, DC Upper:	°C	+70
Storage, Lower:	°C	-35
Storage, Upper:	°C	+105
LIFE EXPECTANCY		
Electrical @ Rated Load (AC1):	operations	100,000
Mechanical @ no Load :	operations	100,000,000
MISCELLANEOUS		
Operating Position:		Any
Enclosure Material:		UL 94v-0 plastic epoxy seal
Cover Protection Category:	IP	67
Weight:	grams	2.7

7 PRINTED CIRCUIT BOARD SUBMINIATURE RELAY

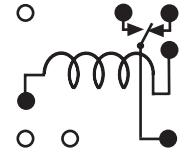


SPST & DPDT 2 AMPS

WIRING DIAGRAM (TOP VIEWED)



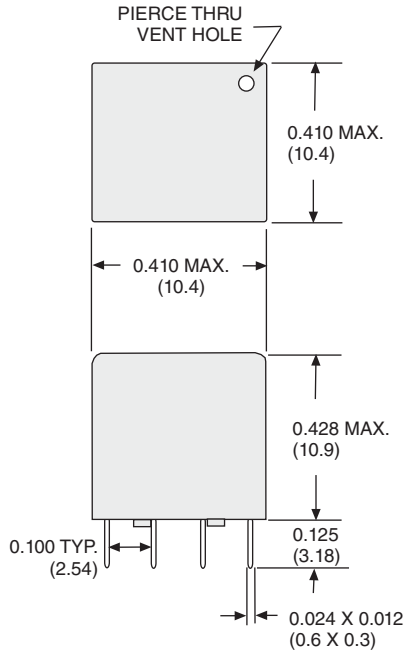
DPDT



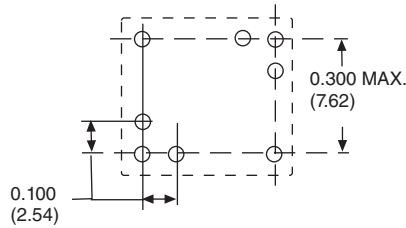
SPDT

OUTLINE DIMENSIONS

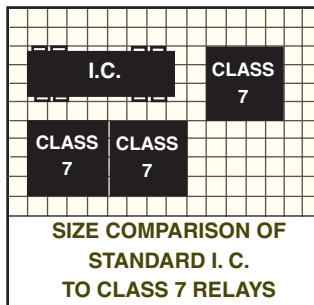
DIMENSIONS SHOWN IN INCHES & (MILLIMETERS).



PRINTED CIRCUIT MOUNTING HOLE LAYOUT (BOTTOM VIEW)



TOP VIEW SHOWN AT ACTUAL SIZE ON 0.1 GRID



THE CLASS 7 RELAYS CAN BE DENSELY PACKED TOGETHER WITHOUT MAGNETIC INTERACTION FROM ADJACENT RELAYS.

STANDARD PART NUMBERS	CONTACT CONFIGURATION	COIL MEASURED @ 25 °C	
		NOMINAL INPUT VOLTAGE	NOMINAL RESISTANCE (OHMS)
W7PCX-1	SPDT	5 VDC	75 Ω
W7PCX-3	SPDT	12 VDC	440 Ω
W7PCX-4	SPDT	24 VDC	1550 Ω
W7PCX-5	DPDT	5 VDC	75 Ω
W7PCX-7	DPDT	12 VDC	440 Ω
W7PCX-8	DPDT	24 VDC	1550 Ω