

A-I-5 Model Number and Dimension Table of NSK Linear Guides

A-I-5.1 LH Series

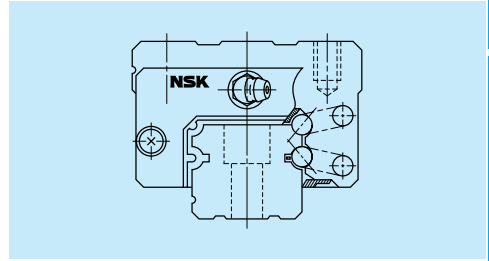
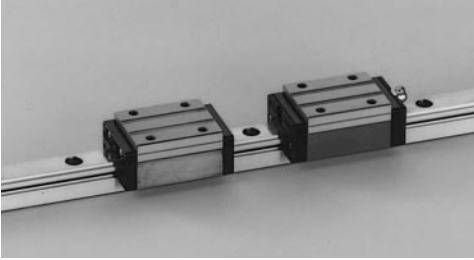


Fig. I-5.1 LH Series

(1) High self-aligning capability (rolling direction)

Same as the DF combination in angular contact bearings, self-aligning capability is high because the cross point of the contact lines of balls and grooves comes inside, reducing moment rigidity.

This increases the capacity to absorb the error of installation.

(2) High load carrying capacity to vertical direction

The contact angle is set at 50 degrees, increasing load carrying capacity as well as rigidity in vertical direction.

(3) High resistance against shock load

The bottom ball groove is formed in gothic-arch and the center of the top and bottom grooves are offset as shown in Fig. I-5-2. The vertical load is generally carried by the top rows, at where balls are contacting at two points. Because of this design, the bottom rows will carry load when a large impact load is applied vertically as shown in Fig. I-5-3. This assures high resistance to the shock load.

(4) Highly accurate As shown in Fig.

I-5.4, fixing the master rollers is easy thanks to the gothic-arch groove. This makes easy and accurate measuring of ball grooves.

(5) Interchangeable rail and ball slide (prompt delivery)

Randomly matching rails and ball slides are stocked as standardized interchangeable items. This reduces delivery time.

(6) Easy to handle, and designed with safety in mind.

Balls are retained in the retainer, therefore they do not fall out when the ball slider is withdrawn from the rail.

(7) Abundant models and sizes

Each series has various models of ball slides, rendering the linear guide available for numerous uses.

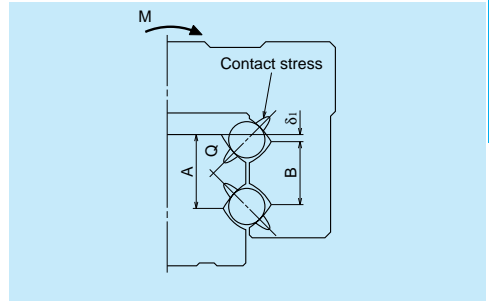


Fig. I-5.2 Enlarged illustration of the offset gothic-arch

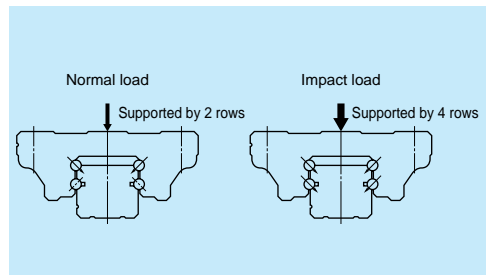


Fig. I-5.3 When load is applied

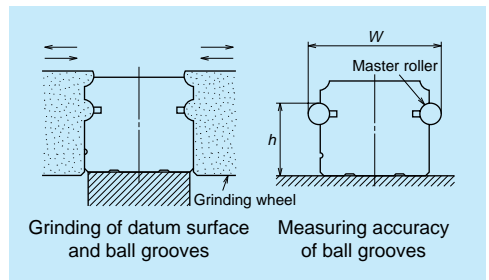


Fig. I-5.4 Rail grinding and measuring

Dimensions of LH Series (Preloaded assembly)

LH-AN (High load type)

LH-BN (Super high load type)

• Specification number of preloaded assembly
(Custom made assembly)

LH 35 08 40 AN C 2 - P N Z 0 - II

Model number: LH 35 08 40 AN C 2 - P N Z 0 - II

Rail length (mm): 40

Ball slide shape: AN

Material/surface treatment (See Page A24): C: Standard material, K: Stainless steel (only for LH20-30)

Number of ball slides per rail: 2

Preload code:
 • Z0 fine clearance
 • Z1 slight preload
 • Z3 medium preload

Accuracy grade:
 • PN normal grade
 • P6 precision grade
 • P5 high precision grade
 • P4 super precision grade
 • P3 ultra precision grade

II refers to a set of 2 linear guides; no code refers to one

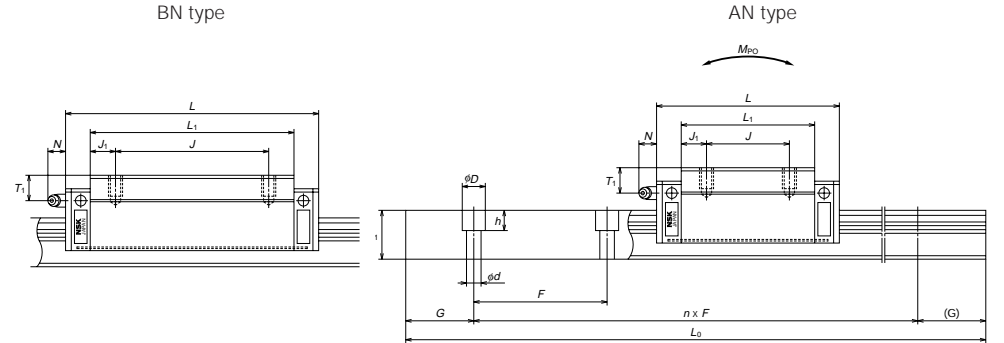
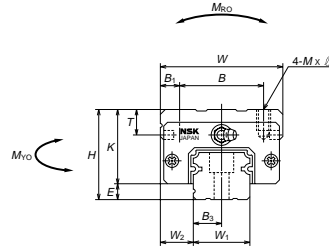


Table. I-5-1

Model No.	Assembly			Ball slide												
	Height H	E	W ₂	Width W	Length L	Mounting tap hole					Grease fitting					
						B	J	M x pitch x ℓ	B ₁	L ₁	J ₁	K	T	Hole size	T ₁	N
LH20AN LH20BN	30	5	12	44	69.8 91.8	32	36	M5×0.8×6	6	50	7	25	12	M6×0.75	5	11
LH25AN LH25BN	40	7	12.5	48	79 107	35	35	M6×1×9	6.5	58	11.5	33	12	M6×0.75	10	11
LH30AN LH30BN	45	9	16	60	85.6 124.6	40	40	M8×1.25×10	10	59	9.5	36	14	M6×0.75	10	11
LH35AN LH35BN	55	9.5	18	70	109 143	50	50	M8×1.25×12	10	80	15	45.5	15	M6×0.75	15	11
LH45AN LH45BN	70	14	20.5	86	139 171	60	60	M10×1.5×17	13	105	22.5	56	17	PT1/8	20	13
LH55AN LH55BN	80	15	23.5	100	163 201	75	75	M12×1.75×18	12.5	126	25.5	65	18	PT1/8	21	13
LH65AN LH65BN	90	16	31.5	126	193 253	76	70	M16×2×20	25	147	38.5	74	23	PT1/8	19	13

Unit: mm

Rail							Basic load rating					Ball dia.		Weight	
Width W ₁	Height H ₁	Pitch F	Mounting bolt hole d x D x h	B ₃	G (recomm ended)	Max. length L _{0max} () For stainless	Dynamic C (N[kgf])	Static C ₀ (N[kgf])	Static moment (N · m[kgf · m])			D _w	Ball slide (kg)	Rail (kg/m)	
							M _{RO}	M _{PO}	M _{RO}						
20	18	60	6×9.5×8.5	10	20	3960 (3500)	14200 [1450]	25100 [2560]	216 [22]	177 [18]	177 [18]	3.968	0.33 0.48	2.6	
23	22	60	7×11×9	11.5	20	3960 (3500)	21000 [2140]	39000 [4000]	355 [36]	315 [32]	305 [31]	4.762	0.55 0.82	3.6	
28	26	80	9×14×12	14	20	4000 (3500)	25700 [2620]	45000 [4570]	490 [50]	355 [36]	355 [36]	5.556	0.77 1.3	5.2	
34	29	80	9×14×12	17	20	4000	39000 [3960]	68500 [7010]	940 [96]	735 [75]	715 [73]	6.350	1.5 2.1	7.2	
45	38	105	14×20×17	22.5	22.5	3990	66000 [6740]	119000 [12100]	2120 [216]	1670 [170]	1650 [168]	7.937	3 3.9	12.3	
53	44	120	16×23×20	26.5	30	3960	97500 [9940]	168000 [17100]	3600 [367]	2870 [293]	2820 [288]	9.525	4.7 6.1	16.9	
63	53	150	18×26×22	31.5	35	3900	150000 [15100]	240000 [24500]	6150 [629]	4850 [495]	4750 [484]	11.906	7.7 10.8	24.3	

LH-EL (High load type)
LH-GL (Super high load type)

• Specification number of preloaded assembly
(Custom made assembly)

LH35 0840 EL C 2 - PN Z0 - II

Model number: LH 35 0840 EL C 2 - PN Z0 - II

Rail length (mm): 0840

Ball slide shape: EL

Material/surface treatment (See Page A24): C: Standard material, K: Stainless steel (only for LH20-30)

Number of ball slides per rail: 2

Preload code:
• Z0 fine clearance
• Z1 slight preload
• Z3 medium preload

Accuracy grade:
• PN normal grade
• P6 precision grade
• P5 high precision grade
• P4 super precision grade
• P3 ultra precision grade

II refers to a set of 2 linear guides; no code refers to one

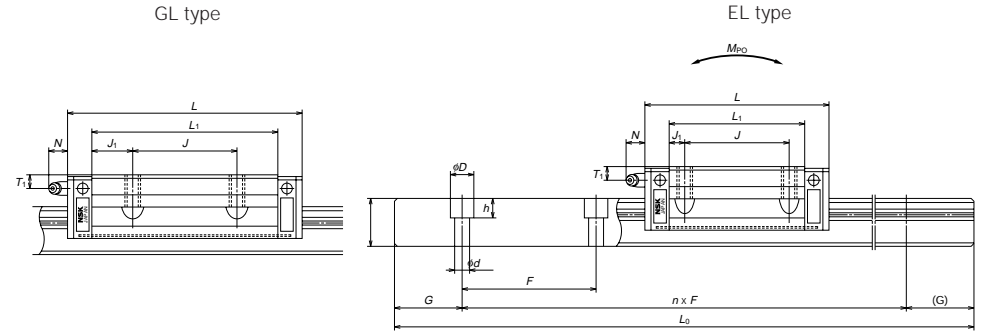
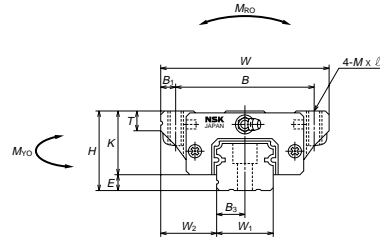


Table. I-5-2

Model No.	Assembly			Ball slide										
	Height	Width	Length	Mounting tap hole							Grease fitting			
				B	J	M x pitch x l	B ₁	L ₁	J ₁	K	T	Hole size	T ₁	N
LH20EL	30	63	69.8	53	40	M6x1x10	5	50	5	25	10	M6x0.75	5	11
LH20GL	30	63	91.8	53	40	M6x1x10	5	72	16	25	10	M6x0.75	5	11
LH25EL	36	70	79	57	45	M8x1.25x16	6.5	58	6.5	29	11	M6x0.75	6	11
LH25GL	36	70	107	57	45	M8x1.25x16	6.5	86	20.5	29	11	M6x0.75	6	11
LH30EL	42	90	98.6	72	52	M10x1.5x18	9	72	10	33	11	M6x0.75	7	11
LH30GL	42	90	124.6	72	52	M10x1.5x18	9	98	23	33	11	M6x0.75	7	11
LH35EL	48	100	109	82	62	M10x1.5x20	9	80	9	38.5	12	M6x0.75	8	11
LH35GL	48	100	143	82	62	M10x1.5x20	9	114	26	38.5	12	M6x0.75	8	11
LH45EL	60	120	139	100	80	M12x1.75x24	10	105	12.5	46	13	PT1/8	10	13
LH45GL	60	120	171	100	80	M12x1.75x24	10	137	28.5	46	13	PT1/8	10	13
LH55EL	70	140	163	116	95	M14x2x28	12	126	15.5	55	15	PT1/8	11	13
LH55GL	70	140	201	116	95	M14x2x28	12	164	34.5	55	15	PT1/8	11	13
LH65EL	90	170	193	142	110	M16x2x24	14	147	18.5	74	23	PT1/8	19	13
LH65GL	90	170	253	142	110	M16x2x24	14	207	48.5	74	23	PT1/8	19	13
LH85GL	110	215	303	185	140	M20x2.5x30	15	243	51.5	92	30	PT1/8	23	13

LH85 is the item on order.

Unit: mm

Rail							Basic load rating					Ball dia.		Weight	
Width	Height	Pitch	Mounting bolt hole	B ₃	G (recomm ended)	Max. length L _{0max} () For stainless	Dynamic C (N[kgf])	Static C ₀ (N[kgf])	Static moment (N · m[kgf · m])			D _w	Ball slide (kg)	Rail (kg/m)	
									M _{RO}	M _{PO}	M _{YO}				
20	18	60	6x9.5x8.5	10	20	3960 (3500)	14200	25100	216	177	177	3.968	0.45	2.6	
							[1450]	[2560]	[22]	[18]	[18]				
							18200	39500	305	345	345				
23	22	60	7x11x9	11.5	20	3960 (3500)	21000	39000	355	315	305	4.762	0.63	3.6	
							[2140]	[4000]	[36]	[32]	[31]				
							26900	52500	470	530	520				
28	26	80	9x14x12	14	20	4000 (3500)	29200	54000	590	490	480	5.556	1.2	5.2	
							[2980]	[5490]	[60]	[50]	[49]				
							37500	71500	785	845	835				
34	29	80	9x14x12	17	20	4000	39000	68500	940	735	715	6.350	1.7	7.2	
							[3960]	[7010]	[96]	[75]	[73]				
							49500	97500	1330	1410	1380				
45	38	105	14x20x17	22.5	22.5	3990	66000	119000	2120	1670	1650	7.937	3	12.3	
							[6740]	[12100]	[216]	[170]	[168]				
							79500	146000	2590	2460	2430				
53	44	120	16x23x20	26.5	30	3960	97500	168000	3600	2870	2820	9.525	5	16.9	
							[9940]	[17100]	[367]	[293]	[288]				
							118000	207000	4400	4250	4150				
63	53	150	18x26x22	31.5	35	3900	150000	240000	6150	4850	4750	11.906	10	24.3	
							[15100]	[24500]	[629]	[495]	[484]				
							189000	320000	8150	8350	8150				
85	65	180	24x35x28	42.5	45	2520	279000	484000	17000	16100	15700	14.287	24.5	38.3	
							[28500]	[49400]	[1730]	[1640]	[1600]				

LH-FL (High load type)
LH-HL (Super high load type)

• Specification number of preloaded assembly
(Custom made assembly)

LH35 0840 FL C 2 - PN Z0 - II

Model number: LH 35 0840 FL C 2 - PN Z0 - II

Rail length (mm): 0840

Ball slide shape: FL

Material/surface treatment (See Page A24): C: Standard material, K: Stainless steel (only for LH20-30)

Number of ball slides per rail: 2

Preload code:
• Z0 fine clearance
• Z1 slight preload
• Z3 medium preload

Accuracy grade:
• PN normal grade
• P6 precision grade
• P5 high precision grade
• P4 super precision grade
• P3 ultra precision grade

II refers to a set of 2 linear guides; no code refers to one

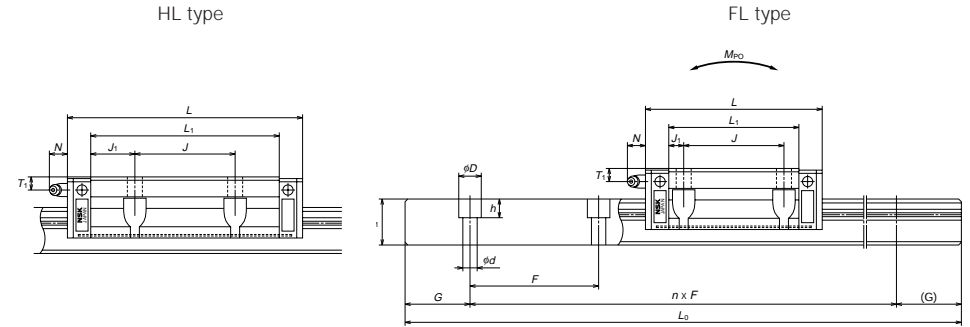
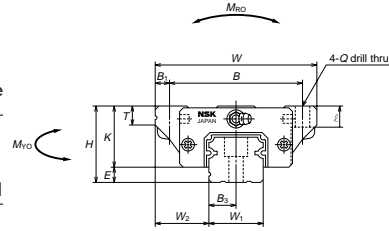


Table. I-5-3

Model No.	Assembly			Ball slide										
	Height	Width	Length	Mounting hole							Grease fitting			
				B	J	Q x l	B ₁	L ₁	J ₁	K	T	Hole size	T ₁	N
LH20FL	30	63	69.8	53	40	6x10	5	50	5	25	10	M6x0.75	5	11
LH20HL	30	63	91.8	53	40	6x10	5	72	16	25	10	M6x0.75	5	11
LH25FL	36	70	79	57	45	7x10	6.5	58	6.5	29	11	M6x0.75	6	11
LH25HL	36	70	107	57	45	7x10	6.5	86	20.5	29	11	M6x0.75	6	11
LH30FL	42	90	98.6	72	52	9x12	9	72	10	33	11	M6x0.75	7	11
LH30HL	42	90	124.6	72	52	9x12	9	98	23	33	11	M6x0.75	7	11
LH35FL	48	100	109	82	62	9x13	9	80	9	38.5	12	M6x0.75	8	11
LH35HL	48	100	143	82	62	9x13	9	114	26	38.5	12	M6x0.75	8	11
LH45FL	60	120	139	100	80	11x15	10	105	12.5	46	13	PT1/8	10	13
LH45HL	60	120	171	100	80	11x15	10	137	28.5	46	13	PT1/8	10	13
LH55FL	70	140	163	116	95	14x18	12	126	15.5	55	15	PT1/8	11	13
LH55HL	70	140	201	116	95	14x18	12	164	34.5	55	15	PT1/8	11	13
LH65FL	90	170	193	142	110	16x24	14	147	18.5	74	23	PT1/8	19	13
LH65HL	90	170	253	142	110	16x24	14	207	48.5	74	23	PT1/8	19	13
LH85HL	110	215	303	185	140	18x30	15	243	51.5	92	30	PT1/8	23	13

LH85 is the item on order.

Unit: mm

Rail							Basic load rating					Ball dia.	Weight		
Width	Height	Pitch	Mounting bolt hole	B ₃	G (recomm. ended)	Max. length L _{max} () for stainless	Dynamic C	Static C ₀	Static moment			D _w	Ball slide (kg)	Rail (kg/m)	
W ₁	H ₁	F	d x D x h				(N[kgff])			(N · m[kgf · m])					
20	18	60	6x9.5x8.5	10	20	3960 (3500)	14200 [1450]	25100 [2560]	216 [22]	177 [18]	177 [18]	3.968	0.45	2.6	
							18200 [1860]	39500 [4020]	305 [31]	345 [35]	345 [35]		0.65		
23	22	60	7x11x9	11.5	20	3960 (3500)	21000 [2140]	39000 [4000]	355 [36]	315 [32]	305 [31]	4.762	0.63	3.6	
							26900 [2740]	52500 [5340]	470 [48]	530 [54]	520 [53]		0.93		
28	26	80	9x14x12	14	20	4000 (3500)	29200 [2980]	54000 [5490]	590 [60]	490 [50]	480 [49]	5.556	1.2	5.2	
							37500 [3800]	71500 [7310]	785 [80]	845 [86]	835 [85]		1.6		
34	29	80	9x14x12	17	20	4000	39000 [3960]	68500 [7010]	940 [96]	735 [75]	715 [73]	6.350	1.7	7.2	
							49500 [5060]	97500 [9930]	1330 [136]	1410 [144]	1380 [141]		2.4		
45	38	105	14x20x17	22.5	22.5	3990	66000 [6740]	119000 [12100]	2120 [216]	1670 [170]	1650 [168]	7.937	3	12.3	
							79500 [8130]	146000 [14900]	2590 [264]	2460 [251]	2430 [248]		3.9		
53	44	120	16x23x20	26.5	30	3960	97500 [9940]	168000 [17100]	3600 [367]	2870 [293]	2820 [288]	9.525	5	16.9	
							118000 [12000]	207000 [21100]	4400 [449]	4250 [435]	4150 [426]		6.5		
63	53	150	18x26x22	31.5	35	3900	150000 [15100]	240000 [24500]	6150 [629]	4850 [495]	4750 [484]	11.906	10	24.3	
							189000 [19300]	320000 [32700]	8150 [834]	8350 [850]	8150 [830]		14.1		
85	65	180	24x35x28	42.5	45	2520	279000 [28500]	484000 [49400]	17000 [1730]	16100 [1640]	15700 [1600]	14.287	24.5	38.3	

Dimensions of LH Series (Interchangeable ball slide)

LAH-AN (High load type)
LAH-BN (Super high load type)

• See "A-I-4.2. Reference Number of the Standardized Linear Guide in Stock" in Page A26 for reference number of each interchangeable part.

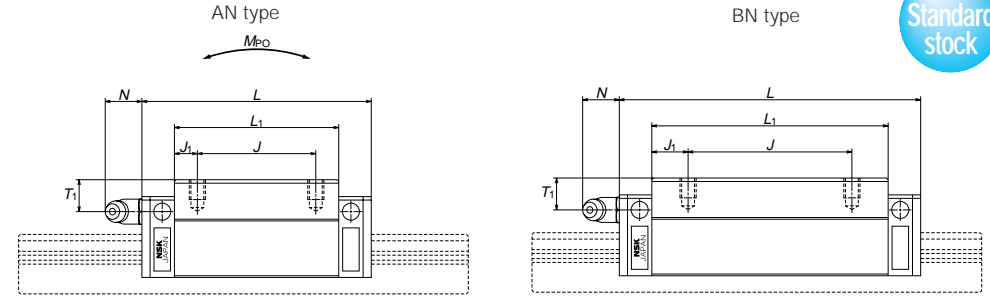
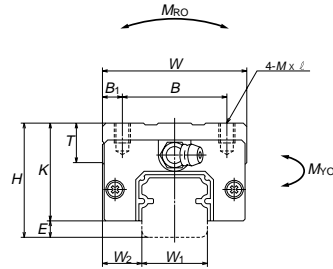


Table. I-5•4

Model No.	Assembly			Ball slide										
	Height <i>H</i>	<i>E</i>	<i>W</i> ₂	Width <i>W</i>	Length <i>L</i>	Mounting tap hole			<i>B</i> ₁	<i>L</i> ₁	<i>J</i> ₁	<i>K</i>	<i>T</i>	
						<i>B</i>	<i>J</i>	<i>M</i> x pitch x <i>l</i>						
LAH20AN	30	5	12	44	69.8	32	36	M5x0.8x6	6	50	7	25	12	
LAH20BN					91.8					50				72
LAH25AN	40	7	12.5	48	79	35	35	M6x1x9	6.5	58	11.5	33	12	
LAH25BN					107					50				86
LAH30AN	45	9	16	60	85.6	40	40	M8x1.25x10	10	59	9.5	36	14	
LAH30BN					124.6					60				98
LAH35AN	55	9.5	18	70	109	50	50	M8x1.25x12	10	80	15	45.5	15	
LAH35BN					143					50				72
LAH45AN	70	14	20.5	86	139	60	60	M10x1.5x17	13	105	22.5	56	17	
LAH45BN					171					60				80
LAH55AN	80	15	23.5	100	163	75	75	M12x1.75x18	12.5	126	25.5	65	18	
LAH55BN					201					75				95
LAH65AN	90	16	31.5	126	193	76	70	M16x2x20	25	147	38.5	74	23	
LAH65BN					253					76				120

Unit: mm

Grease fitting			Basic load rating					Ball dia. <i>D</i> _W	Weight Ball slide (kg)
			Dynamic		Static	Static moment			
Hole size	<i>T</i> ₁	<i>N</i>	<i>C</i> (N[kgfl])	<i>C</i> ₀ (N[kgfl])	<i>M</i> _{RO} (N·m[kgf·m])	<i>M</i> _{PO} (N·m[kgf·m])	<i>M</i> _{VO} (N·m[kgf·m])	<i>D</i> _W	Weight (kg)
M6x0.75	5	11	14200	25100	216	177	177		
			[1450]	[2560]	[22]	[18]	[18]		
			18200	39500	305	345	345		
M6x0.75	10	11	21000	39000	355	315	305	4.762	0.55
			[2140]	[4000]	[36]	[32]	[31]		
			26900	52500	470	530	520		
M6x0.75	10	11	25700	45000	490	355	355	5.556	0.77
			[2620]	[4570]	[50]	[36]	[36]		
			37500	71500	785	845	835		
M6x0.75	15	11	39000	68500	940	735	715	6.350	1.5
			[3960]	[7010]	[96]	[75]	[73]		
			49500	97500	1330	1410	1380		
PT1/8	20	13	66000	119000	2120	1670	1650	7.937	3
			[6740]	[12100]	[216]	[170]	[168]		
			79500	146000	2590	2460	2430		
PT1/8	21	13	97500	168000	3600	2870	2820	9.525	4.7
			[9940]	[17100]	[367]	[293]	[288]		
			118000	207000	4400	4250	4150		
PT1/8	19	13	150000	240000	6150	4850	4750	11.906	7.7
			[15100]	[24500]	[629]	[495]	[484]		
			189000	320000	8150	8350	8150		
			[19300]	[32700]	[834]	[850]	[830]		10.8

LAH-EL (High load type)
LAH-GL (Super high load type)

• See "A-I-4.2. Reference Number of the Standardized Linear Guide in Stock" in Page A26 for reference number of each interchangeable part.

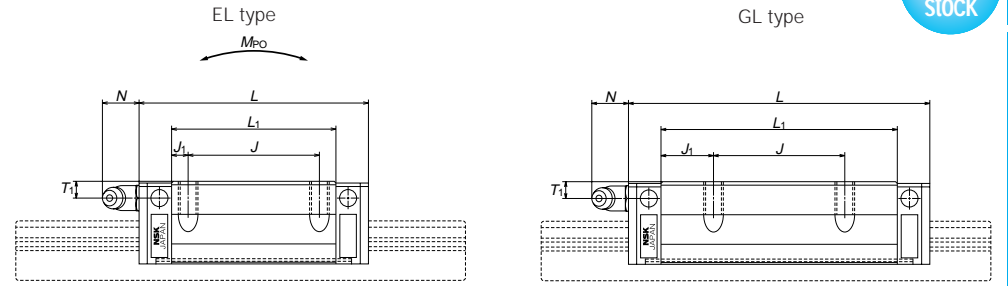
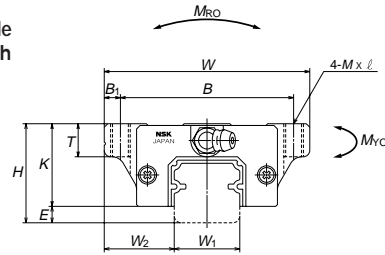


Table. I-5•5

Model No.	Assembly			Ball slide									
	Height H	E	W ₂	Width W	Length L	Mounting tap hole			B ₁	L ₁	J ₁	K	T
						B	J	M x pitch x ℓ					
LAH20EL	30	5	21.5	63	69.8	53	40	M6×1×10	5	50	5	25	10
LAH20GL					91.8					72	16		
LAH25EL	36	7	23.5	70	79	57	45	M8×1.25×16	6.5	58	6.5	29	11
LAH25GL					107					86	20.5		
LAH30EL	42	9	31	90	98.6	72	52	M10×1.5×18	9	72	10	33	11
LAH30GL					124.6					98	23		
LAH35EL	48	9.5	33	100	109	82	62	M10×1.5×20	9	80	9	38.5	12
LAH35GL					143					114	26		
LAH45EL	60	14	37.5	120	139	100	80	M12×1.75×24	10	105	12.5	46	13
LAH45GL					171					137	28.5		
LAH55EL	70	15	43.5	140	163	116	95	M14×2×28	12	126	15.5	55	15
LAH55GL					201					164	34.5		
LAH65EL	90	16	53.5	170	193	142	110	M16×2×24	14	147	18.5	74	23
LAH65GL					253					207	48.5		

Unit: mm

Grease fitting			Basic load rating					Ball dia. D _w	Weight Ball slide (kg)
			Dynamic		Static				
Hole size	T ₁	N	C	C ₀	M _{Ro}	M _{po}	M _{vo}	D _w	Ball slide (kg)
			(N[kgf])						
M6×0.75	5	11	14200	25100	216	177	177	3.968	0.45
			[1450]	[2560]	[22]	[18]	[18]		
			18200	39500	305	345	345		
M6×0.75	6	11	21000	39000	355	315	305	4.762	0.63
			[2140]	[4000]	[36]	[32]	[31]		
			26900	52500	470	530	520		
M6×0.75	7	11	29200	54000	590	490	480	5.556	1.2
			[2980]	[5490]	[60]	[50]	[49]		
			37500	71500	785	845	835		
M6×0.75	8	11	39000	68500	940	735	715	6.350	1.7
			[3960]	[7010]	[96]	[75]	[73]		
			49500	97500	1330	1410	1380		
PT1/8	10	13	66000	119000	2120	1670	1650	7.937	3
			[6740]	[12100]	[216]	[170]	[168]		
			79500	146000	2590	2460	2430		
PT1/8	11	13	97500	168000	3600	2870	2820	9.525	5
			[9940]	[17100]	[367]	[293]	[288]		
			118000	207000	4400	4250	4150		
PT1/8	19	13	150000	240000	6150	4850	4750	11.906	10
			[15100]	[24500]	[629]	[495]	[484]		
			189000	320000	8150	8350	8150		
PT1/8			193000	327000	8340	8500	8300		14.1
			[19300]	[32700]	[834]	[850]	[830]		

LAH-FL (High load type)
LAH-HL (Super high load type)

• See "A-I-4.2. Reference Number of the Standardized Linear Guide in Stock" in Page A26 for reference number of each interchangeable part.

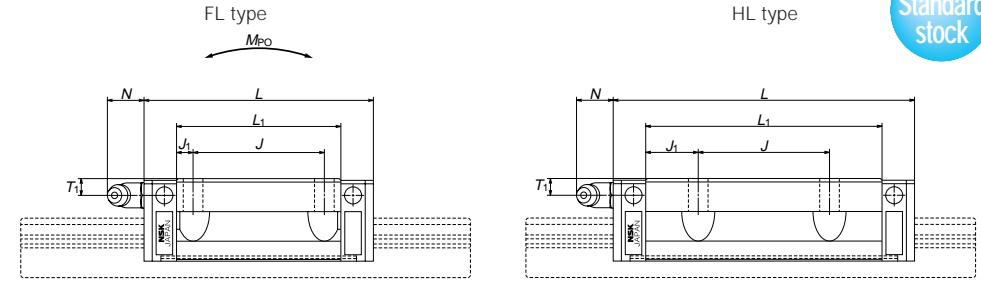
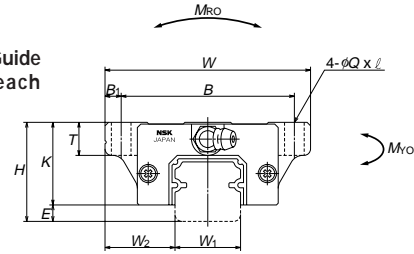


Table. I-5•6

Model No.	Assembly			Ball slide									
	Height H	E	W ₂	Width W	Length L	Mounting hole			B ₁	L ₁	J ₁	K	T
						B	J	Q x l					
LAH20FL	30	5	21.5	63	69.8	53	40	6x10	5	50	5	25	10
LAH20HL					91.8					72	16		
LAH25FL	36	7	23.5	70	79	57	45	7x10	6.5	58	6.5	29	11
LAH25HL					107					86	20.5		
LAH30FL	42	9	31	90	98.6	72	52	9x12	9	72	10	33	11
LAH30HL					124.6					98	23		
LAH35FL	48	9.5	33	100	109	82	62	9x13	9	80	9	38.5	12
LAH35HL					143					114	26		
LAH45FL	60	14	37.5	120	139	100	80	11x15	10	105	12.5	46	13
LAH45HL					171					137	28.5		
LAH55FL	70	15	43.5	140	163	116	95	14x18	12	126	15.5	55	15
LAH55HL					201					164	34.5		
LAH65FL	90	16	53.5	170	193	142	110	16x24	14	147	18.5	74	23
LAH65HL					253					207	43.5		

Unit: mm

Grease fitting			Basic load rating					Ball dia. D _w	Weight Ball slide (kg)
			Dynamic		Static				
Hole size	T ₁	N	C	C ₀	M _{Ro}	M _{po}	M _{vo}	D _w	Weight (kg)
			(N[kgfl])		(N · m[kgf · m])				
M6x0.75	5	11	14200	25100	216	177	177	3.968	0.45
			[1450]	[2560]	[22]	[18]	[18]		
			18200	39500	305	345	345		
M6x0.75	6	11	21000	39000	355	315	305	4.762	0.63
			[2140]	[4000]	[36]	[32]	[31]		
			26900	52500	470	530	520		
M6x0.75	7	11	29200	54000	590	490	480	5.556	1.2
			[2980]	[5490]	[60]	[50]	[49]		
			37500	71500	785	845	835		
M6x0.75	8	11	39000	68500	940	735	715	6.350	1.7
			[3960]	[7010]	[96]	[75]	[73]		
			49500	97500	1330	1410	1380		
PT1/8	10	13	66000	119000	2120	1670	1650	7.937	3
			[6740]	[12100]	[216]	[170]	[168]		
			79500	146000	2590	2460	2430		
PT1/8	11	13	97500	168000	3600	2870	2820	9.525	5
			[9940]	[17100]	[367]	[293]	[288]		
			118000	207000	4400	4250	4150		
PT1/8	19	13	150000	240000	6150	4850	4750	11.906	10
			[15100]	[24500]	[629]	[495]	[484]		
			189000	320000	8150	8350	8150		
			[19300]	[32700]	[834]	[850]	[830]		14.1



Dimensions of LH Series (Interchangeable rail)

Dimensions of LH Series (Interchangeable rail)

Regular rails Butting rails
 L1H (Fine clearance) L1H-01 (Fine clearance)
 L1H-Z (Slight preload) L1H-01Z (Slight preload)

• See " A-I-4-2 Reference Number of the Standardized Linear Guide in Stock" on [Page A26](#) for reference number of each interchangeable part.

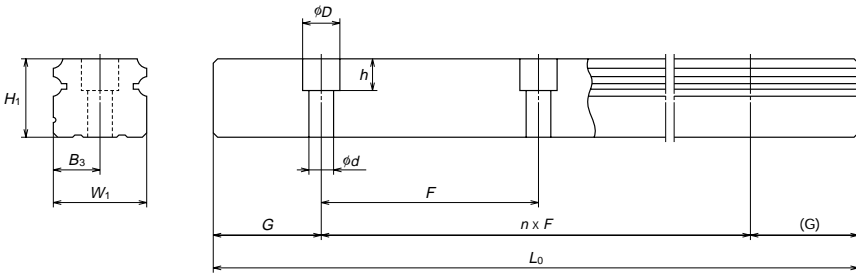


Table I-5-7

Unit: mm

Model No.	Rail							Weight
	Width W_1	Height H_1	Pitch F	Mounting bolt hole $d \times D \times h$	B_3	G Recommended	Max. length L_{0MAX}	Rail (Kg/m)
L1H20	20	18	60	6×9.5×8.5	10	20	3960	2.6
L1H25	23	22	60	7×11×9	11.5	20	3960	3.6
L1H30	28	26	80	9×14×12	14	20	4000	5.2
L1H35	34	29	80	9×14×12	17	20	4000	7.2
L1H45	45	38	105	14×20×17	22.5	22.5	3990	12.3
L1H55	53	44	120	16×23×20	26.5	30	3960	16.9
L1H65	63	53	150	18×26×22	31.5	35	3900	24.3

G dimension is $1/2F^{0.5}$ for butting rail.