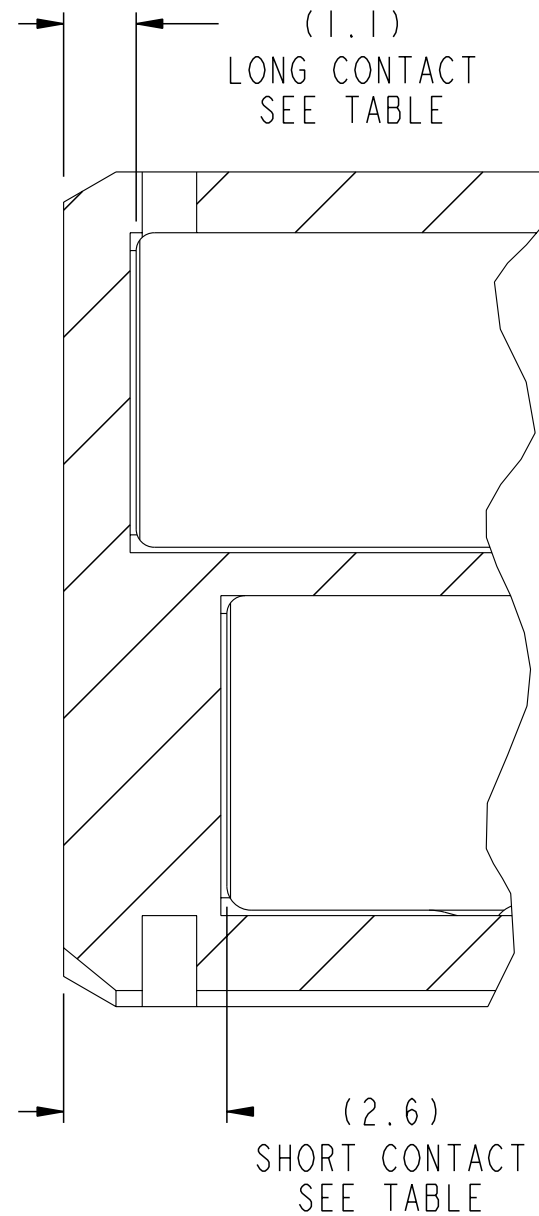
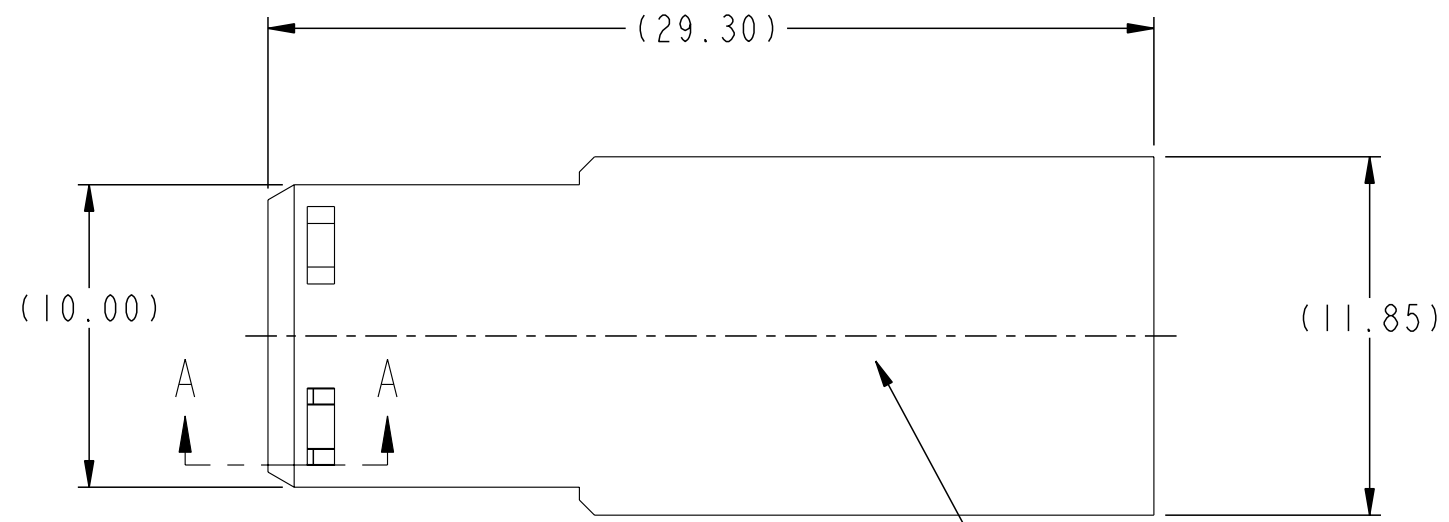
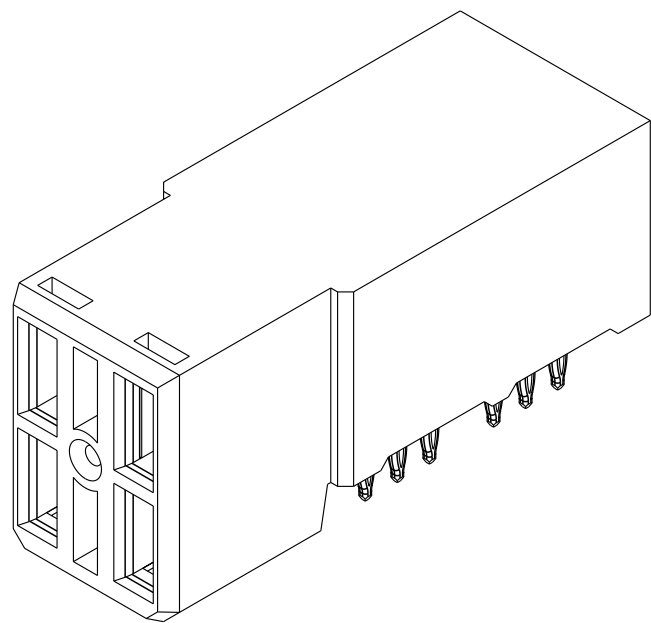
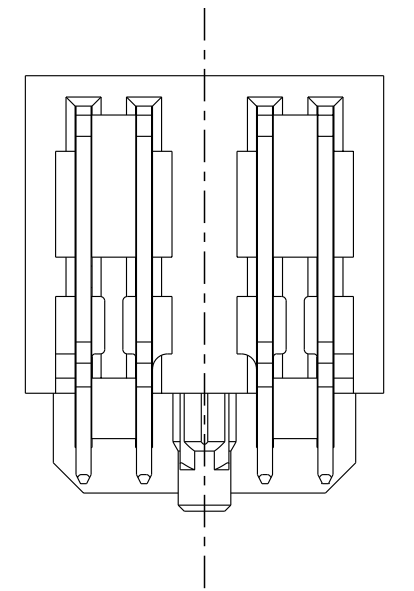
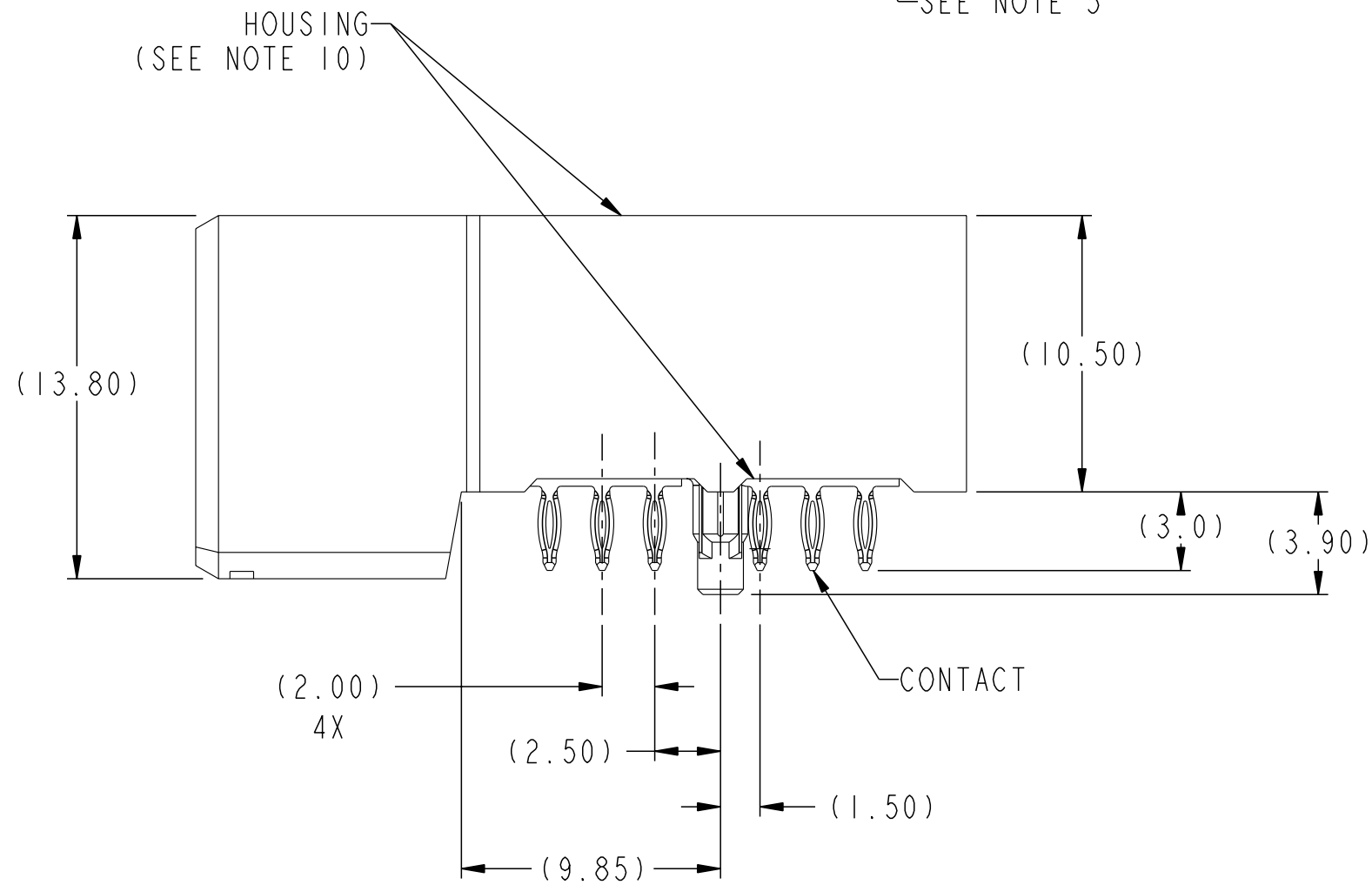
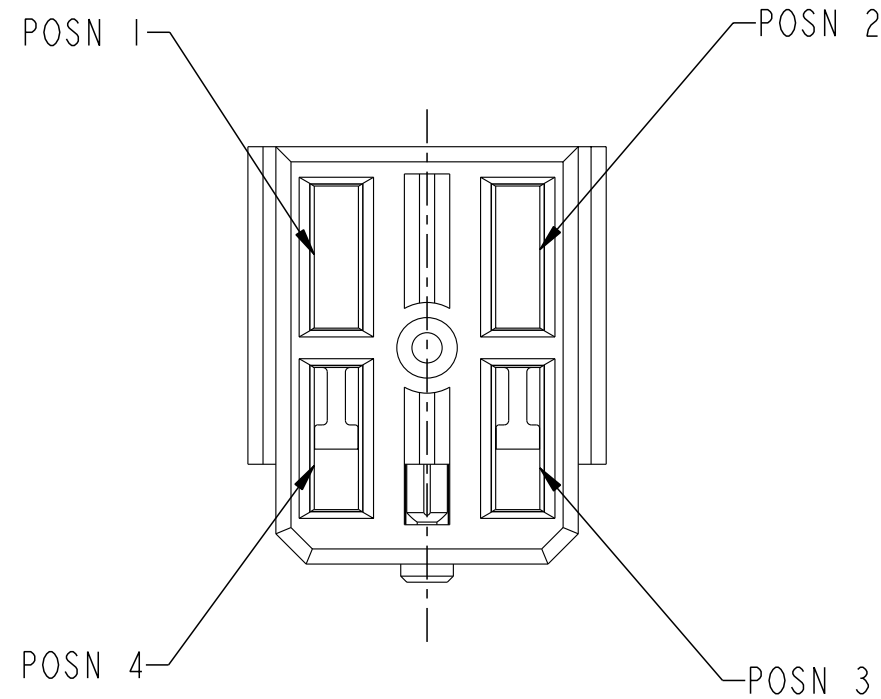


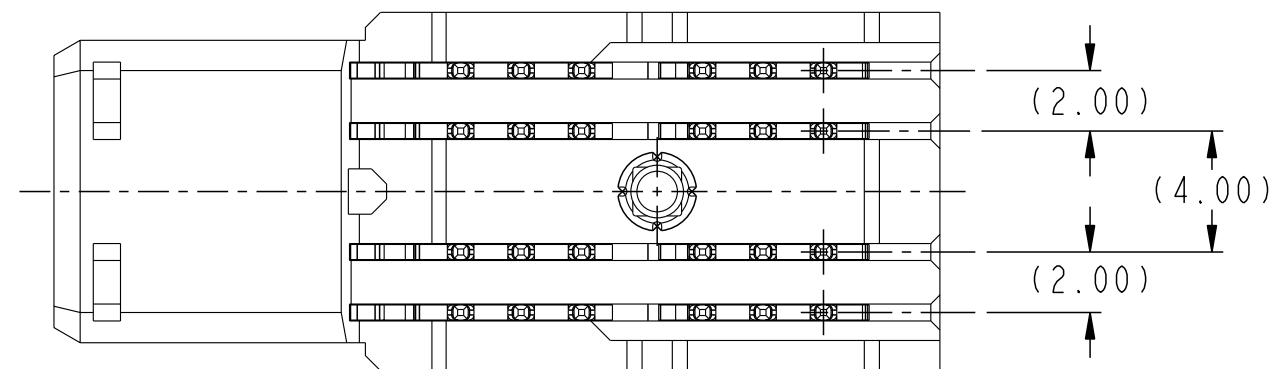
PRODUCT NUMBER ("LF" DENOTES LEAD-FREE)	CONTACT PLATING NOTE	CONTACT DEPTH (SEE SECTION A-A)				ROHS COMPATIBILITY
		POSN 1	POSN 2	POSN 3	POSN 4	
10052620-4444P00LF	2	LONG	LONG	LONG	LONG	SEE NOTE 8
10052620-5555P00LF	2	SHORT	SHORT	SHORT	SHORT	SEE NOTE 8
10052620-4555P00LF	2	LONG	SHORT	SHORT	SHORT	SEE NOTE 8
10052620-5455P00LF	2	SHORT	LONG	SHORT	SHORT	SEE NOTE 8
10052620-5545P00LF	2	SHORT	SHORT	LONG	SHORT	SEE NOTE 8
10052620-5554P00LF	2	SHORT	SHORT	SHORT	LONG	SEE NOTE 8
10052620-4554P00LF	2	LONG	SHORT	SHORT	LONG	SEE NOTE 8



SECTION A-A
SCALE 8:1



SCALE 3:1

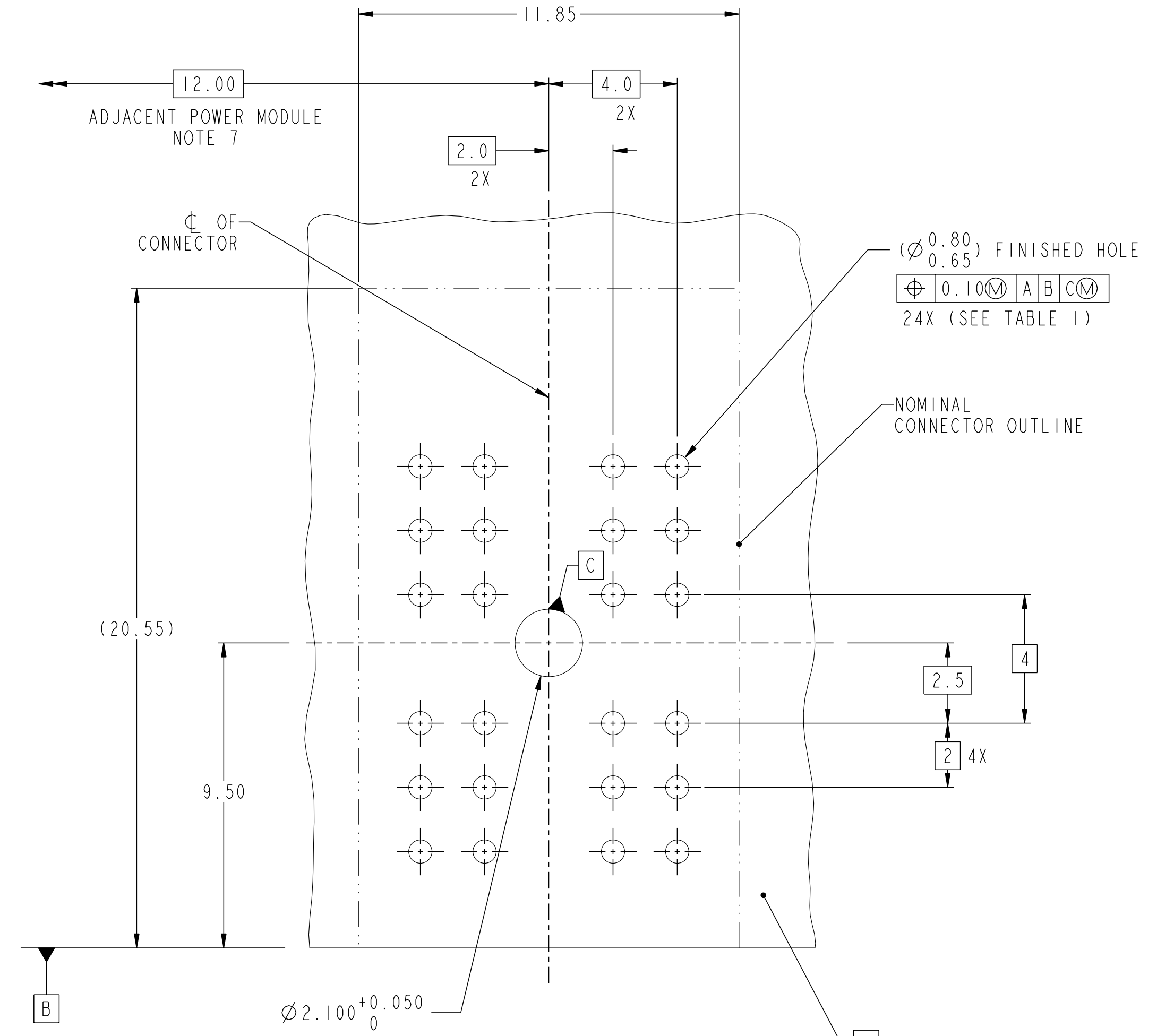


FCI www.fciconnect.com		surface - ✓ ASME Y14.5	tolerance ASME Y14.5 --	projection ⊕	MM ↔
Dr	T.HOUTZ	3/29/05	Product family	2mm High Power	size A2
Eng	H.NGO	3/29/05	Spec ref	--	Scale 1:1
Chr	H.NGO	3/29/05	Material	SEE NOTES	ECN --
Appr	H.NGO	3/29/05			
TOLERANCES UNLESS OTHERWISE SPECIFIED		rev	ecn no	dr	date
LINEAR	0.X ±.3	-	-	-	-
	0.XX ±.10	-	-	-	-
	0.XXX ±.050	-	-	-	-
ANGULAR	0° ±2°	-	-	-	-
title R/A RECEPTACLE POWER ASSEMBLY (2 x 2)		catalog no		10052620	
customer		sheet 1 of 2		Rev. A	

TOP LAYER DESCRIPTION	TABLE I PLATED THROUGH-HOLE REQUIREMENTS							
	DRILLED HOLE DIAMETER	COPPER THICKNESS	TIN-LEAD THICKNESS	NICKEL THICKNESS	GOLD THICKNESS	TIN THICKNESS	SILVER THICKNESS	FINISHED HOLE DIAMETER
TIN-LEAD	0.81-0.86 (0.85 DRILL)	0.025 - 0.050	0.005 - 0.015	--	--	--	--	0.65 - 0.80
IMMERSION TIN	0.81-0.86 (0.85 DRILL)	0.025 - 0.050	--	--	--	0.9 - 1.5um	--	0.70 - 0.80
IMMERSION SILVER	0.81-0.86 (0.85 DRILL)	0.025 - 0.050	--	--	--	--	0.15 - 0.65um	0.70 - 0.80
COPPER (SEE NOTE 11)	0.81-0.86 (0.85 DRILL)	0.025 - 0.050	--	--	--	--	--	0.70 - 0.80
GOLD	0.81-0.86 (0.85 DRILL)	0.025 - 0.050	--	0.003 - 0.007	FLASH UP TO 0.0002	--	--	0.69 - 0.80

NOTES:

1. CONNECTOR MATERIALS:
HOUSING: HIGH TEMPERATURE THERMOPLASTIC, BLACK
UL 94V-0 COMPLIANT
CONTACT: HIGH PERFORMANCE COPPER ALLOY
2. CONTACT PLATING (LEAD FREE):
PRESS-FIT TAIL: 0.5um MIN MATTE TIN OVER NICKEL.
SEPARABLE INTERFACE: 0.76um MIN GOLD OVE NICKEL.
3. PRODUCT SPECIFICATION: GS-12-220
4. APPLICATION SPECIFICATION: GS-20-023
5. PRODUCT MARKING (PRODUCT NUMBER & DATE CODE) ON HOUSING IN AREA SHOWN.
6. MINIMUM NOMINAL PCB THICKNESS: 1.6mm
7. REFER TO CUSTOMER DRAWING 10035911 FOR INFORMATION REGARDING PCB LAYOUT OF POWER AND GUIDE MODULES RELATIVE TO SIGNAL MODULES.
8. PRODUCT MEETS EUROPEAN UNION DIRECTIVES AND OTHER COUNTRY REGULATIONS AS DESCRIBED IN FCI SPECIFICATION GS-22-008.
9. PACKAGING MEETS FCI SPECIFICATION GS-14-920.
10. HOUSING COMPONENT WILL WITHSTAND EXPOSURE TO 260°C PEAK TEMPERATURE FOR 60 SECONDS IN A CONVECTION, INFRA-RED, OR VAPOR PHASE REFLOW OVEN.
11. COPPER PLATING THICKNESS IN CENTER OF VIA-HOLE CAN BE NO MORE THAN 0.003 LESS THAN OTHER AREAS.



RECOMMENDED PCB LAYOUT
COMPONENT SIDE
NOTE 6
SCALE 4:1

title	R/A RECEPTACLE POWER ASSEMBLY (2 x 2)	dwg no	10052620	Rev.	A
catalog no	-	CUSTOMER	sheet 2 of 2		

Tous droits strictement reserves. Reproduction ou communication a des tiers interdite sans l'approbation écrite de la direction autorisation écrite du propriétaire. Property of FCI. © FCI.

FCI

All rights strictly reserved. Reproduction or issue to third parties in any form without the prior written permission of FCI is prohibited. Property of FCI. © FCI.