

BusTools-1553 v.7 Analysis, Test and Simulation Software

Specifications

Flexible Real-time Data Displays

- Quickly create multiple, concurrent displays
- Data displayed in engineering units with labels
- Simplified filtering
- User-formatted charting - real-time and historical

Advanced Archive and Playback

- Log 100% of bus traffic on multiple channels to disk and/or memory
- Three different simultaneous logging features
- Pre- and post-processing filtering of data to word count
- Multi-level event triggering
- Real-time bus playback with RT edit mode
- PAT - Parallel Analysis Tool displays multiple views of archived data

System Integration Tool - Selective Data Watch

- Real-time display of individual data words from any network message
- Designed for interactive use
- Quick selection of up to 64 data words with no programming
- Upper and lower limit checking with notification
- Out-of-limit log file with snapshot feature

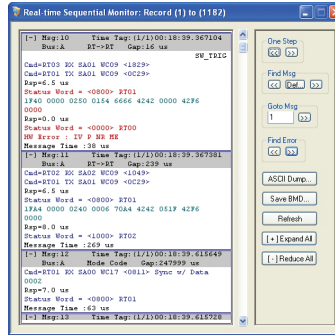
Bus Analysis

- Analyze 1553 bus protocol activity
- At-a-glance Bus Activity Screen
- Detailed display of message status, errors, data
- Inject/detect errors at the message and word levels
- IRIG/GPS synchronization capability. IRIG B decode optional
- Graphical "Topology" representation and icon controls for customized bus schematic layouts, ease of use, and trouble-shooting of cable/transformer connections

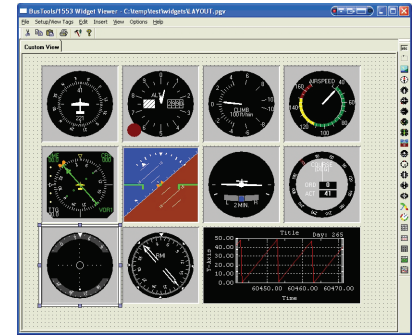
Network Simulation

- Simulate all or part of a network
- Modify simulated data while running through Microsoft Windows DLL
- Intuitive, interactive operation
- Major/Minor frame Bus Controller architecture
- Graphical, icon-based GUI programming
- Conditional BC branching
- Simple ASCII file formats for BC, RT and EU (ICD) definitions. Full ASCII conversions for archived data allows easy export to spreadsheet applications.

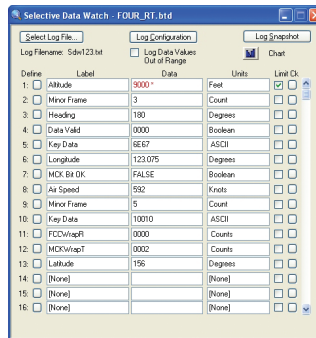
BT-1553



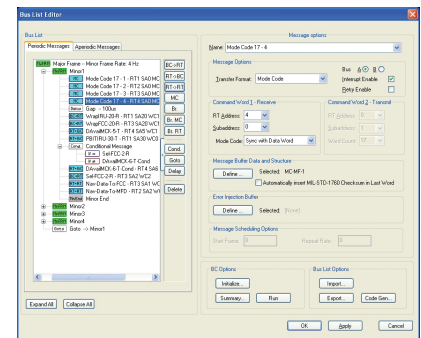
Real-time data in engineering units



The Widget Viewer tool displays real-time data using different types of aircraft instrument displays



Selective data watch quickly provides display, limit checking, logging and output of individual data words



One Page Bus List Editor offers a new way of designing Bus Lists. Bus List content is displayed in a tree control form making it easy to modify or expand the Bus List.

Ordering Information

BT-1553

MIL-STD-1553 GUI Bus Analysis, Simulation and Data Logging software (BusTools/1553) for Windows XP/2000/Me/NT/98/95

About GE Intelligent Platforms

GE Intelligent Platforms, a General Electric Company (NYSE: GE), is an experienced high-performance technology company and a global provider of hardware, software, services, and expertise in automation and embedded computing. We offer a unique foundation of agile, advanced and ultra-reliable technology that provides customers a sustainable advantage in the industries they serve, including energy, water, consumer packaged goods, government and defense, and telecommunications. GE Intelligent Platforms is a worldwide company headquartered in Charlottesville, VA and is part of GE Home and Business Solutions. For more information, visit www.ge-ip.com.

GE Intelligent Platforms Contact Information

Americas: **1 800 433 2682** or **1 434 978 5100**

Global regional phone numbers are listed by location on our web site at www.ge-ip.com/contact

www.ge-ip.com

