

## Model 15L, 15LX, 16L, 16LX

### Small Volume High Pressure Regulator for Pressure Reducing & Relief

**Max. Inlet Pressure...6000 psi**  
**Outlet Pressure Ranges...2-25, 3-60, 5-150, 8-300, 10-750 psi**

#### General Specifications

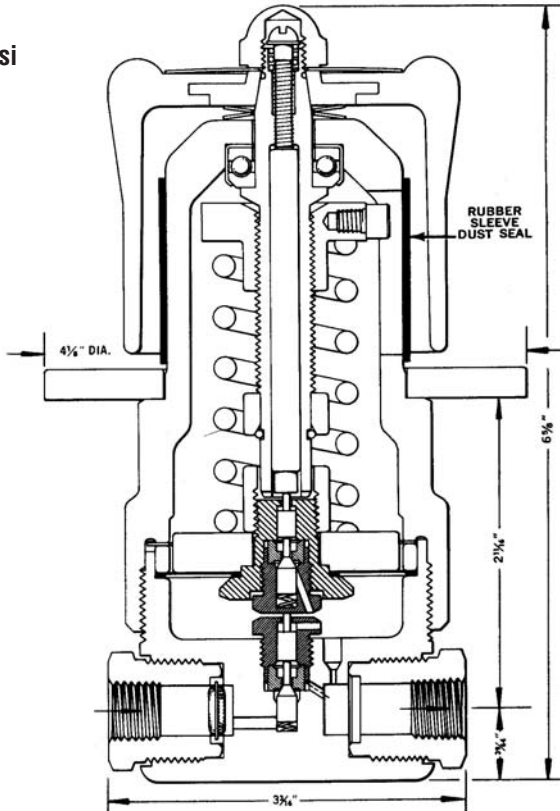
Flow Media (15 Series) All Non-Toxic Gases  
 (16 Series) Liquids & Gases  
 Flow Capacity See Capacity Chart 125-K-5  
 Operating Temperature Range -65°F to 165°F  
 End Connections 1/4" NPT & MS-33649-4\*  
 (other sizes & types available on special order)  
 Handwheel Turns to Full Pressure 16 Turns Approx.  
 Weight 6 lbs

#### Material Specifications

All Metal Parts in flow stream 18/8 Stainless Steel  
 Standard Diaphragm Material Mylar  
 Standard Valve Material Nylon

Note: Model 16L & 16LX are for reducing service only (no relief system)

Model Number	Basic Fig. Number	Relief System	Max Inlet Pressure	Max CV
15L	10927	YES	6000	0.06
16L	11058	NO	6000	0.06
15LX	10928	YES	6000	0.018
16LX	11089	NO	6000	0.018



For mounting dimensions, see sheet W-15L-B01

#### Ordering Information

Select Basic Figure Number from Above table and complete the Figure Number by coding the desired output pressure range and end connections as in example below.

Basic Fig. No.	Outlet Pressure Range	Code	End Connection	Code	Super Cleaned	Code
10927	2-25 psi	A	1/4" MS 33649-4"	L2	No	A
	3-60 psi	B				
	5-150 psi	C	1/4" NPT (Female)	P2		
	8-300 psi	E				
	10-750 psi	F				

Figure 10927EP2A is the unique description of a 15L combination reducing & relief regulator, 6000psi inlet, outlet pressure range 0-300 psi with 1/4" FNPT end connections not supercleaned.

\*Replaces AND-10050-4



**RedQ**  
**Dresser, Inc.**

2822 S. 1030 W.  
 Salt Lake City, Utah 84119  
 Phone: 801.487.2225 Fax: 801.487.2587  
 www.mooneycontrols.com

