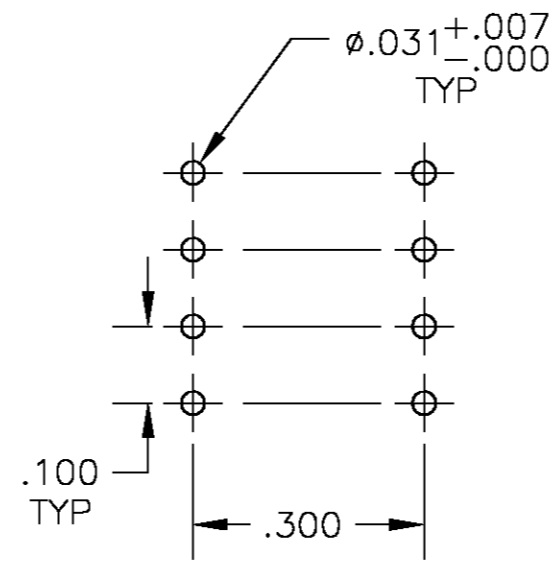
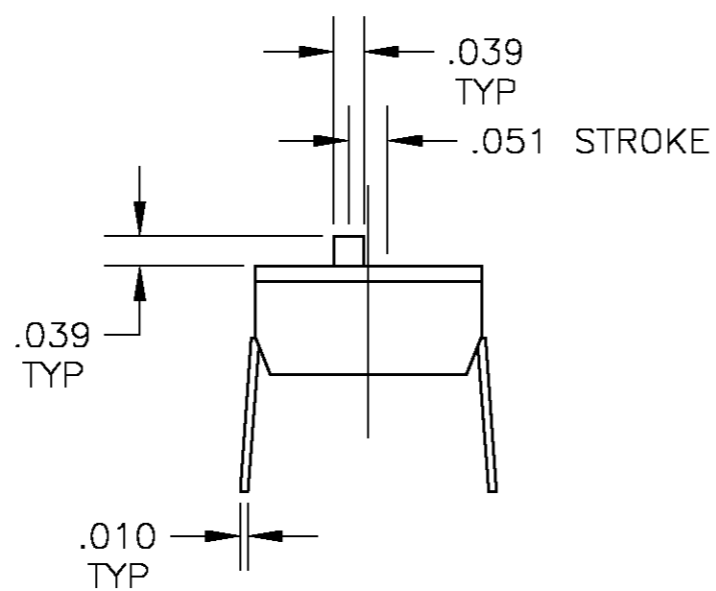
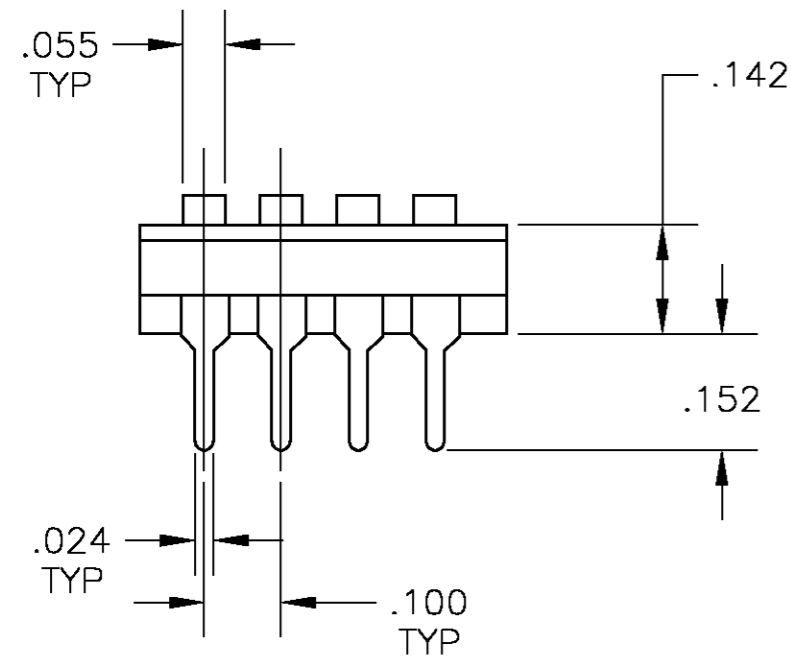
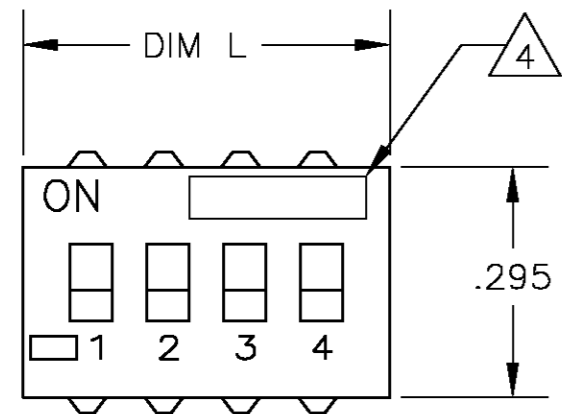


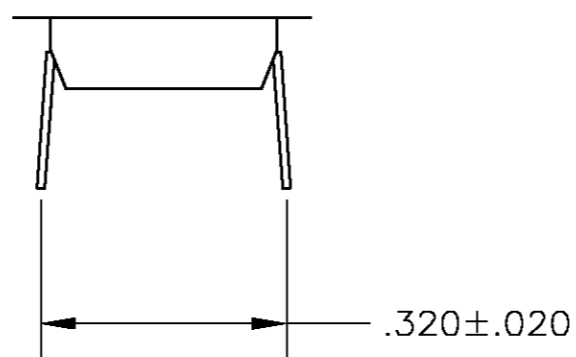
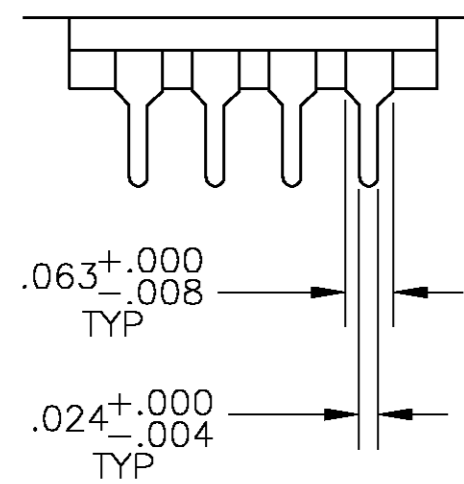
THIS DRAWING IS UNPUBLISHED. RELEASED FOR PUBLICATION  
 © COPYRIGHT BY TYCO ELECTRONICS CORPORATION. ALL RIGHTS RESERVED.

LOC	DIST	REVISIONS					
AD	00	P	LTR	DESCRIPTION	DATE	DWN	APVD
		C		EC 0G3C-0261-04	29JUN04	BSV	MSS



P.C. LAYOUT  
INSERT MOUNT

ADE



INSERT MOUNT

Specifications:  
 MATERIAL  
 BASE, PPS,(12 POS PA46) UL94V-0, BLACK  
 COVER, PPS,(12 POS PA46) UL94V-0, BLACK  
 ACTUATOR, PA6T,(12 POS PBT) UL94V-0, WHITE  
 FIXED CONTACT/TERMINAL, CU ALLOY, PLATE TIN(90%)LEAD(10%)OVER COPPER  
 MOVING CONTACT, CU ALLOY, PLATE-GOLD FLASH/NICKEL

ELECTRICAL  
 MAX CONTACT RATING SWITCHING, 100MILLIAMP @ 24 VDC  
 MIN CONTACT RATING SWITCHING, .1MICROAMP @ 1 MILLIVOLT  
 MAX CONTACT NON-SWITCHING, 1AMP @ 5 VDC  
 INITIAL CONTACT RESISTANCE, 50 MILLIOHMS MAX.  
 CONTACT RESISTANCE (AFTER ENVIRONMENTAL TEST), 100 MILLIOHMS  
 CONTACT RESISTANCE (AFTER GAS TEST), 300 MILLIOHMS  
 INSULATION RESISTANCE, 1,000 MEGOHMS MIN. @ 100 VDC  
 DIELECTRIC STRENGTH, 500 VAC RMS @ SEA LEVEL  
 LIFE EXPECTANCY, 1,000 CYCLES

MECHANICAL  
 OPERATING FORCE, LESS THAN 800 GRAMS  
 CONTACT PRESSURE, 280,000 PSI

ENVIRONMENTAL  
 OPERATING TEMPERATURE, -30 TO +85 DEGREES C  
 STORAGE TEMPERATURE, -45 TO + 100 DEGREES C  
 CLEANING, AQUEOUS OR SOLVENT  
 SOLDER HEAT RESISTANCE, 245 +/-5 DEGREES C FOR 30 SECONDS,  
 MOUNTED ON .060 PCB, SWITCH "OFF".

- SWITCHES TO BE RECEIVED IN THE "OFF" POSITION AND PACKAGED IN CLEAR TUBES TO ACCOMMODATE AUTO-INSERTION.
- TOP SURFACE TO BE CLEARLY MARKED AS SHOWN
- SWITCHES TO BE BLACK WITH WHITE ACTUATORS AND MARKINGS.
- MARK PER 202-37.
- RECOMMENDED SOLDER PROCESS, WAVE SOLDER: BATH TEMPERATURE OF 245 +/-5 DEGREES C FOR 5 SECONDS. SWITCH POSITION SHOULD BE IN THE OFF SETTING.

ADE12	1.28	12	3-1437586-8
ADE10	1.078	10	3-1437586-2
ADE09	0.978	9	3-1437586-0
ADE08	0.878	8	2-1437586-6
ADE07	0.778	7	2-1437586-3
ADE06	0.678	6	1-1437586-8
ADE05	0.578	5	1-1437586-5
ADE04	0.478	4	1-1437586-0
ADE03	0.378	3	1437586-7
ADE02	0.278	2	1437586-2
Old T&B P/N	Dim L	Poles	Tyco P/N

THIS DRAWING IS A CONTROLLED DOCUMENT.		DWN	19AUG03	Tyco Electronics Corporation Harrisburg, Pa 17105-3808							
DIMENSIONS: INCHES		CHK	26AUG03								
TOLERANCES UNLESS OTHERWISE SPECIFIED:		APVD	26AUG03								
0 PLC ± - 1 PLC ± - 2 PLC ± - 3 PLC ± .012 4 PLC ± - ANGLES ± - FINISH -		NAME	M.SARVER								
MATERIAL		PRODUCT SPEC	PRODUCT SPEC	DIP SWITCH, ADE THRU HOLE - -							
FINISH		APPLICATION SPEC	APPLICATION SPEC								
WEIGHT		WEIGHT	-	SIZE	A2	CAGE CODE	00779	DRAWING NO	C=1437586-2	RESTRICTED TO	-
CUSTOMER DRAWING		SCALE		4:1	SHEET	1	OF	1	REV	C	