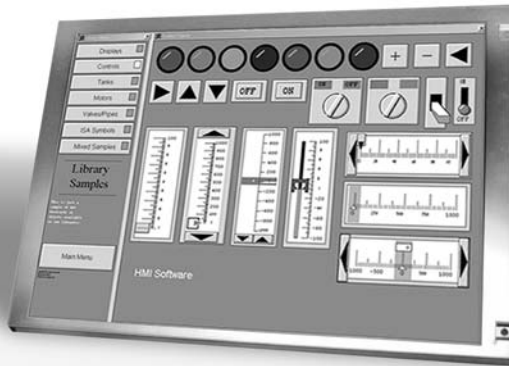


AP-LKLH1226-01

Industrial Monitor kit 12.1" 1200 nits, TFT, DC, VGA, AV



Specifications

System	
Form Factor	Industrial Monitor
OS Support	MS DOS, Windows® 2000, Windows® XP
Display	
Size	12.1"
Resolutions	1024 x 768
Type	TFT
Max. Colors	262K
Dot Size	0.24 x 0.24
Luminance	1200 nit
Contrast Ratio	500:1
Viewing Angle	140°/125°(Typ.)
Back Light MTBF	50000
Brightness Control	Yes
LCD Interface	LVDS
VGA input	Yes
Video input	Yes
S-video input	Yes
I/O	
Video	1 x S-video in/ 1 x Video-in
Mechanical and Environmental	
Power Requirement	12V DC
Operating Temperature	0~50°C
Operating Humidity	80%
Storage Humidity	80%
Dimension	277.4(w) x 204.6(H) x 27(D)
Net Weight	0.8kg

Features

- Wide Viewing Angle
- Fast Response Time
- High Contrast Ratio
- Very High Brightness
- Sunlight Readable

Ordering Information

● AP-LKLH1226-01

Industrial Monitor Kit 12.1" 1200 nits, TFT, DC, VGA, AV.

1

Medical Station Solutions - ONYX Series

2

Fanless Operator Panel Solutions - OMNI Series

3

Robust Panel PC Solutions

4

Industrial Workstation Solutions

5

Industrial Monitor Solutions

6

Embedded Control PC-BOXER Series

7

Accessory Sunreadable LCD Monitors

8

Common Accessories