



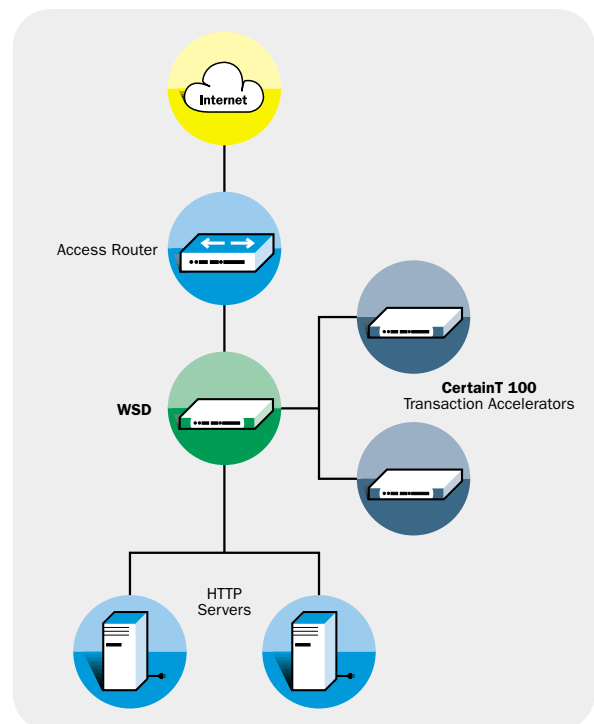
CertainT 100 Transaction Acceleration

CertainT 100 offloads and accelerates SSL transactions as well as HTTP traffic and compresses HTTP content to deliver multi-Gigabit speeds for accelerated content delivery, fast response times and unlimited SSL service scaling.

CertainT 100 processes SSL transactions and manages certificates by using an optimized service delivery platform. By completely offloading transaction cycles from server CPU and boosting processing speeds, CertainT 100 delivers complete transaction reliability, the fastest response time for users and unlimited SSL service scalability. This guarantees top performance along with economical and secure SSL transaction completion.

HTTP compression and HTTP connection multiplexing accelerates content delivery by 200%, cuts connectivity costs and reduces bandwidth requirements by up to 50%.

The integrated WSD / CertainT 100 solution provides unlimited scalability, optimized performance and high availability of all SSL and HTTP based services. Combined with SynApps the joint solution delivers unique real-time protection against SSL based attacks.





Content Acceleration	HTTP and HTTPS compression reduces bandwidth requirements by up to 50%. HTTP connection multiplexing offloads HTTP requests from servers and accelerates content delivery speeds by cutting CPU overhead by up to 75%
SSL Transaction Processing Offloading	Offloading of Secure Socket Layer transaction processing to an optimized service delivery platform frees expensive CPU cycles and eliminates the need to deploy unnecessary servers for transaction handling. CertainT 100 increases processing capacity while dramatically cutting SSL transaction service costs for immediate ROI
High Performance SSL	Encryption/decryption of SSL traffic at multi-Gigabit speeds ensures high-speed SSL transaction processing, for accelerated performance and best user experience
SSL Service Fail-Over (when used with WSD)	SSL service fail-over ensures continuous, fault tolerant SSL service availability and secure transaction completion
Unlimited SSL Scalability	Seamless service volume growth of up to 35,000 SSL transactions per second in CertainT 100 clusters, delivers unlimited scalability for SSL transactions for complete handling of any traffic volume and traffic surges
SSL Sniffing	SSL sniffing mitigates service failures and blocks encrypted attacks by decrypting and inspecting SSL traffic. Decrypted traffic is directed to security devices for security filtering. The identification and termination of illegitimate SSL sessions protects against malicious SSL packets and security violations in real-time, for complete transaction and network security
End-to-End Transaction Visibility	Configware Insite provides real-time and historical reporting and statistics for site wide transaction performance information and identification of potential service vulnerabilities
Compact 1 unit size	CertainT 100's 1 unit size saves precious rack space

Product Specifications

CertainT 100 Level 1 - 700 TPS
 CertainT 100 Level 2 - 1400 TPS
 CertainT 100 Level 3 - 2800 TPS
 CertainT 100 Level 4 - 6500 TPS

Security Algorithms Supported:
 DES, 3DES, DH, DSS, MD5, RC2, RC4, RSA, SHA-1

Encryption Protocols: SSLv2, SSLv3, TLS

Certification: FIPS

Network Management:
 Configware Insite
 Web Based Management
 SSH Secure Command Line Management
 Command Line Interface
 Dynamic configuration through password-protected serial console

Supported Web Servers:
 All commercial Web servers

Environmental:
 Operating Temperature: 0-40c
 Operating Relative Humidity: 5% to 95% Non-condensing

Network Interfaces:
Levels 1 & 2
 Two 10/100 Base-TX ports
 One RS-232C connector

Level 3 & 4 (One of the three options):

- Two 10/100 Base-TX ports
- One 10/100 Base-TX and One 10/100/1000 Base-TX
- One 10/100 Base-TX and One 1000 Base-SX

One RS-232C connector



Certainty Support

Technical Support Program

All Radware products are supported through the Certainty Support Program consisting of four elements - phone support, software updates, hardware maintenance and on-site support, combined into a single support package. Learn more at: www.radware.com/support/