

Evaluation Kits

3000 SERIES



ISO 9001 and ISO 14000 Certified

<http://noritake-vfd.com/3000series.aspx>



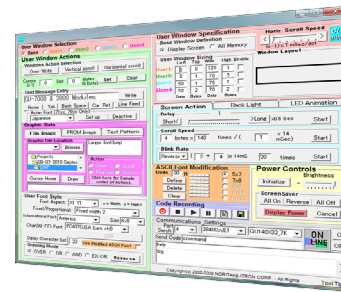
What's Included

- Vacuum Fluorescent Display (VFD) Module
- AC Adaptor
- Cable
- Quick Start Guide
- GUD10K Software
- GUD10K Instruction Manual



GUD10K Software

- Execute command with click of a button.
- Record all actions into a routine and play it back.
- Export to various programming formats.
 - Intel Hex file, Assembler source, and C code.



| Part Number | VFD Module | Number of Characters | Display Bitmap | Character Height (mm) | Display Size (mm) | PCB Size (mm) | Interface | Power Supply Typical |
|-------------------|-----------------|----------------------|----------------|-----------------------|-------------------|---------------|-------------------------------------|----------------------|
| GUE-3900-256X32D | GU256X32D-3900 | 42 x 4 | 256 x 32 | 3 | 115.1 x 14.3 | 159.0 x 35.0 | CMOS parallel RS232 async serial | 5V / 450 mA |
| GUE-3900-256X64C | GU256X64C-3900 | | | 2 | 83.1 x 20.7 | | | 5V / 430 mA |
| GUE-3900-256X64D | GU256X64D-3900 | | | 3 | 115.1 x 28.7 | | | 5V / 850 mA |
| GUE-3900-256X64E | GU256X64E-3900 | | | 4 | 140.7 x 35.1 | | | 5V / 1160 mA |
| GUE-3900-256X128C | GU256X128C-3900 | 42 x 16 | 256 x 128 | 2 | 83.1 x 41.5 | 131.0 x 66.0 | | 5V / 850 mA |
| GUE-3900-256X128D | GU256X128D-3900 | | | 3 | 115.1 x 57.5 | | | 5V / 1200 mA |
| GUE-3900-320X32D | GU320X32D-3900 | | | 53 x 4 | 320 x 32 | | | 3 |

Noritake Co., Inc.
 Electronics Division Headquarter
 2635 Clearbrook Drive
 Arlington Heights, IL 60005
 Toll free: (800) 779 - 5846
 Phone: (847) 439 - 9020
 support.ele@noritake.com
www.noritake-elec.com

East Coast
New Jersey Branch
 15-22 Fair Lawn Ave.
 Fair Lawn, NJ 07410
 Toll free: (888) 296 - 3423
 Phone: (201) 475 - 5200
 Fax: (201) 796 - 2269

Midwest, Canada, and Mexico
Chicago Branch
 2635 Clearbrook Dr.
 Arlington Heights, IL 60005
 Toll free: (800) 779 - 5846
 Phone: (847) 439 - 9020
 Fax: (847) 593 - 2285

West Coast
Los Angeles Branch
 21081 S. Western Ave. Ste 180
 Torrance, CA 90501
 Toll free: (888) 795 - 3423
 Phone: (310) 320 - 1700
 Fax: (310) 320 - 2900



E-M-0037-00