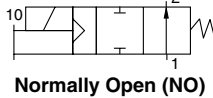
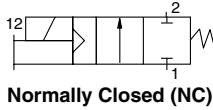
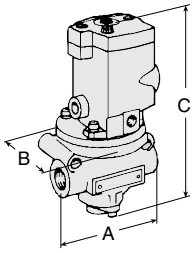


# Mechanical Devices/Inline Poppet Valves

Mechanische Geräte • 機械の機構 • यांत्रिकी उपकरण • Dispositivos Mecânicos • 机械装置

## Flywheel Brake, Bolster and Part Ejection Applications

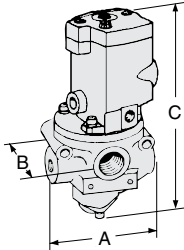
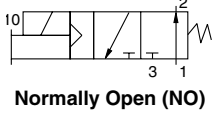
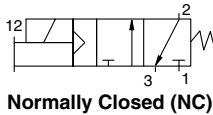
### 2/2 Valves



Port Size	Valve Model Number*		Avg. C <sub>v</sub>		Dimensions inches (mm)			Weight lb (kg)
	NC	NO	NC	NO	A	B	C	
1/4	2771B2001	2772B2001	2.3	2.3	3.6 (91)	3.2 (79)	6.9 (175)	2.5 (1.2)
3/8	2771B3001	2772B3001	3.8	3.3	3.6 (91)	3.2 (79)	6.9 (175)	2.5 (1.2)
1/2	2771B4011	2772B4011	4.0	3.5	3.6 (91)	3.2 (79)	6.9 (175)	2.5 (1.2)
1/2	2771B4001	2772B4001	7.7	6.5	4.6 (116)	3.2 (79)	7.6 (193)	3.3 (1.5)
3/4	2771B5001	2772B5001	9.0	7.3	4.6 (116)	3.2 (79)	7.6 (193)	3.3 (1.5)
1	2771B6011	2772B6011	9.0	7.9	4.6 (116)	3.2 (79)	7.6 (193)	3.3 (1.5)
1	2771B6001	2772B6001	24	21	6.7 (169)	4.1 (104)	10.4 (265)	7.0 (3.2)
1 1/4	2771B7001	2772B7001	29	20	6.7 (169)	4.1 (104)	10.4 (265)	7.0 (3.2)
1 1/2	2771B8011	2772B8011	29	21	6.7 (169)	4.1 (104)	10.4 (265)	7.0 (3.2)
1 1/2	2771B8001	2772B8001	49	49	8.7 (219)	5.2 (131)	11.8 (300)	15.5 (6.9)
2	2771B9001	2772B9001	57	57	8.7 (219)	5.2 (131)	11.8 (300)	15.5 (6.9)
2 1/2	2771B9011	2772B9011	64	72	8.7 (219)	5.2 (131)	11.8 (300)	15.5 (6.9)

\*NPT standard. For BSPP threads, add a "D" prefix to the model number, e.g., D2771B2001.  
For 110 volts AC add "Z" suffix to the model number, for 24 volts DC add "W" suffix to the model number.

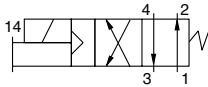
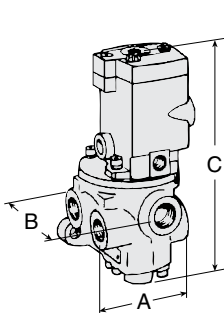
### 3/2 Valves



Port Sizes In-Out Exh.		Valve Model Number*		Avg. C <sub>v</sub>		Dimensions inches (mm)			Weight lb (kg)
NC	NO	NC	NO	A	B	C			
1/4	1/2	2773B2001	2774B2001	2.8	2.5	3.6 (91)	3.2 (79)	7.2 (182)	2.5 (1.2)
3/8	1/2	2773B3001	2774B3001	4.0	3.0	3.6 (91)	3.2 (79)	7.2 (182)	2.5 (1.2)
1/2	1/2	2773B4011	2774B4011	3.8	3.0	3.6 (91)	3.2 (79)	7.2 (182)	2.5 (1.2)
1/2	1	2773B4001	2774B4001	7.8	7.2	4.6 (116)	3.6 (92)	7.9 (201)	3.3 (1.5)
3/4	1	2773B5001	2774B5001	9.4	7.2	4.6 (116)	3.6 (92)	7.9 (201)	3.3 (1.5)
1	1	2773B6011	2774B6011	10	7.2	4.6 (116)	3.6 (92)	7.9 (201)	3.3 (1.5)
1	1 1/2	2773B6001	2774B6001	29	21	6.7 (169)	4.9 (123)	10.4 (265)	7.0 (3.2)
1 1/4	1 1/2	2773B7001	2774B7001	31	22	6.7 (169)	4.9 (123)	10.4 (265)	7.0 (3.2)
1 1/2	1 1/2	2773B8011	2774B8011	31	21	6.7 (169)	4.9 (123)	10.4 (265)	7.0 (3.2)
1 1/2	2 1/2	2773B8001	2774B8001	69	58	8.7 (219)	6.4 (161)	12.4 (313)	16.5 (7.4)
2	2 1/2	2773B9001	2774B9001	70	60	8.7 (219)	6.4 (161)	12.4 (313)	16.5 (7.4)
2 1/2	2 1/2	2773B9011	2774B9011	71	55	8.7 (219)	6.4 (161)	12.4 (313)	16.5 (7.4)

\*NPT standard. For BSPP threads, add a "D" prefix to the model number, e.g., D2773B2001.  
For 110 volts AC add "Z" suffix to the model number, for 24 volts DC add "W" suffix to the model number.

### 4/2 Valves



Port Sizes In-Out Exh.		Valve Model Number*	Avg. C <sub>v</sub>	Dimensions inches (mm)			Weight lb (kg)
A	B	C					
1/4	1/2	2776B2001	2.5	4.0 (100)	3.9 (97)	7.2 (182)	3.0 (1.4)
3/8	1/2	2776B3001	3.6	4.0 (100)	3.9 (97)	7.2 (182)	3.0 (1.4)
1/2	1/2	2776B4011	3.7	4.0 (100)	3.9 (97)	7.2 (182)	3.0 (1.4)
1/2	1	2776B4001	6.9	4.7 (118)	5.3 (135)	9.0 (228)	5.3 (2.4)
3/4	1	2776B5001	8.2	4.7 (118)	5.3 (135)	9.0 (228)	5.3 (2.4)
1	1	2776B6011	8.9	4.7 (118)	5.3 (135)	9.0 (228)	5.3 (2.4)
1	1 1/2	2776B6001	23	6.5 (166)	8.3 (211)	10.7 (271)	11.3 (5.1)
1 1/4	1 1/2	2776B7001	24	6.5 (166)	8.3 (211)	10.7 (271)	11.3 (5.1)
1 1/2	1 1/2	2776B8011	25	6.5 (166)	8.3 (211)	10.7 (271)	11.3 (5.1)

\*NPT standard. For BSPP threads, add a "D" prefix to the model number, e.g., D2776B2001.  
For 110 volts AC add "Z" suffix to the model number, for 24 volts DC add "W" suffix to the model number.

#### STANDARD SPECIFICATIONS (for valves on this page):

**Solenoids:** AC or DC power.

**Standard Voltages:** 110 volts AC, 24 volts DC.

**Power Consumption:** 87 VA inrush, 30 VA holding on 50 or 60 Hz; 14 watts on DC.

**Ambient Temperature:** 40° to 120°F (4° to 50°C).

**Media Temperature:** 40° to 175°F (4° to 80°C).

**Flow Media:** Filtered air; 5 micron recommended.

**Inlet Pressure:** 1/4 to 1 1/2 Port Sizes: 15 to 150 psig (1 to 10 bar);  
1 1/2 to 2 1/2 Port Sizes: 30 to 150 psig (2 to 10 bar).

**Pilot Pressure:** When external supply is used, pressure must be equal to or greater than inlet pressure.

**IMPORTANT NOTE:** Please read carefully and thoroughly all of the **CAUTIONS** on the inside back cover.