



CMZ Series - Zoom Camera Units

CMZ-01-X Zoom Camera Unit, Fuselage Mount

CMZ-02 Zoom Camera Unit, Glare Shield Mount



The CMZ series are state-of-the-art color zoom camera units offering up to 72x zoom (18x optical + 4x digital) and a multitude of features including automatic/manual focus control, freeze frame, low-light operation and digital signal processing. The CMZ's precision optics allow you to see the more of the picture with it's wide 48 degree field of view. To the other extreme you can zoom in full digital telephoto mode to less than one degree.

The lightweight CMZ-01 is designed to install flush into the belly fuselage area to provide a downward looking view below the aircraft. Internal and externally installed versions are available. The CMZ-02 is a forward-looking glare shield mount version. Both cameras can be controlled via RS-485 data bus or by keyline control.

FEATURES:

- **High Resolution**
- **72x Zoom**
18x Optical and 4x Digital
- **Automatic Focus**
- **Freeze Frame**
- **Digital Signal Processing**
- **Low Light Operation**

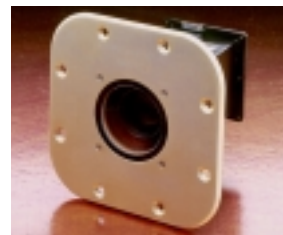
APPROVED INSTALLATIONS:

- **Bombardier**
- **Boeing**
- **Dassault**
- **Raytheon**
- **Gulfstream**

Part Numbers 100-1053-01 (CMZ-01-1)
100-1053-02 (CMZ-01-2)
100-1058-01 (CMZ-02)



CMZ-01-1



CMZ-01-2



CMZ-02

Specifications — CMZ Series

Model:	CMZ-01-1	CMZ-01-2	CMZ-02
Part Number:	100-1053-01	100-1053-02	100-1058-01
Description:	Camera Unit, Zoom, Internal Mnt	Camera Unit, Zoom, External Mnt	Camera Unit, Zoom, Glare Shield
Max. Weight:	1.75 lb. (.79 kg)		1.5 lb. (.68 kg)
Dimensions: (HWD): (Without Mounting Plate)	4.7 x 2.5 x 2.5 in. (119x64x64 mm)		2.41 x 2.25 x 4.6 in. (61x57x117 mm)
Mounting Plate Dim:	6.0 ² x0.150 in. (152 ² x4mm)	3.75 ² x0.50 in. (95 ² x1mm)	(inclusive)
Finish:	Powder coated, black		
Mounting:	4x 10-32 fasteners	8x 10-32 fasteners	Ball stud/shoe
Window Material:	Fused Silica		N/A
Window Demisting:	Internal Heater		N/A
Power Requirements:	12 VDC, 10w max.		12 VDC, 3w max.
Video Output:	VBS, 1.0 Vp-p at 75? , Negative Sync		
Television System:	NTSC 3.58 Color		
Mating Connector	MS3126F14-18S		DB15P
Horizontal Field of View:	Optical Mode: 18x zoom, 2.7? ~ 48? ; Digital Mode: 72x Zoom, 0.68? ~ 48?		
Imager:	1/4 inch interline transfer CCD		
Resolution:	>470 Horz. TV Lines		
Picture Elements:	380K; 768 x 494		
Sync:	Internal		
Gamma:	? =0.45		
Min. Illumination:	0.2 lux at f1.4		
White Balance:	Automatic, through-the-window		
Electronic Shutter:	1/60-1/10,000 s		
S/N Ratio:	>50dB		
Features	Autofocus, Freeze-Frame, Low-Light "Night" Mode , Digital Signal Processing (More advanced features available via VCU-05 RS-485 interface)		
Options	Electrical Installation Kit / Cables Structural Installation Kit		



Zoom camera images taken during a flight test over Tucson, Arizona.



Typical Lower
Fuselage Installation.