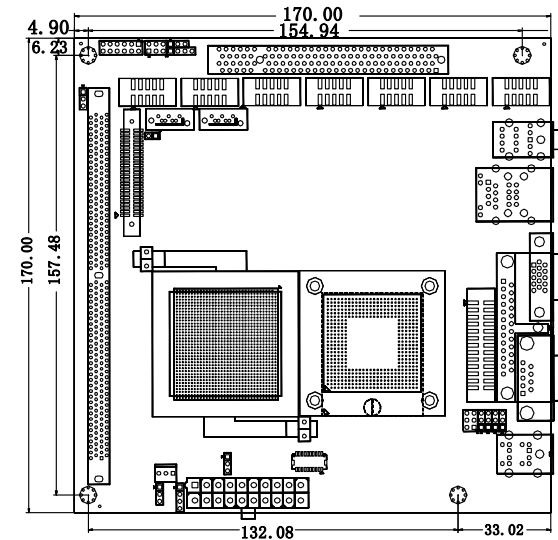
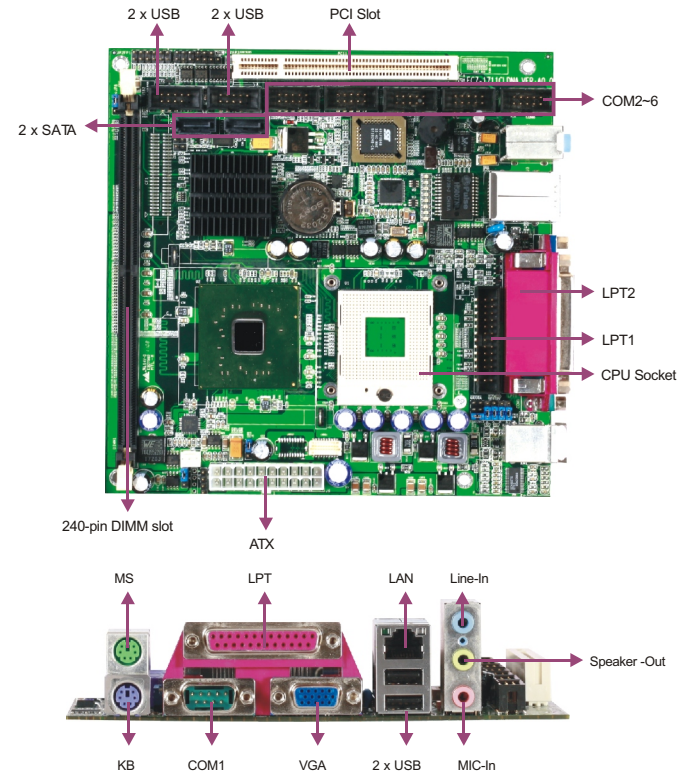
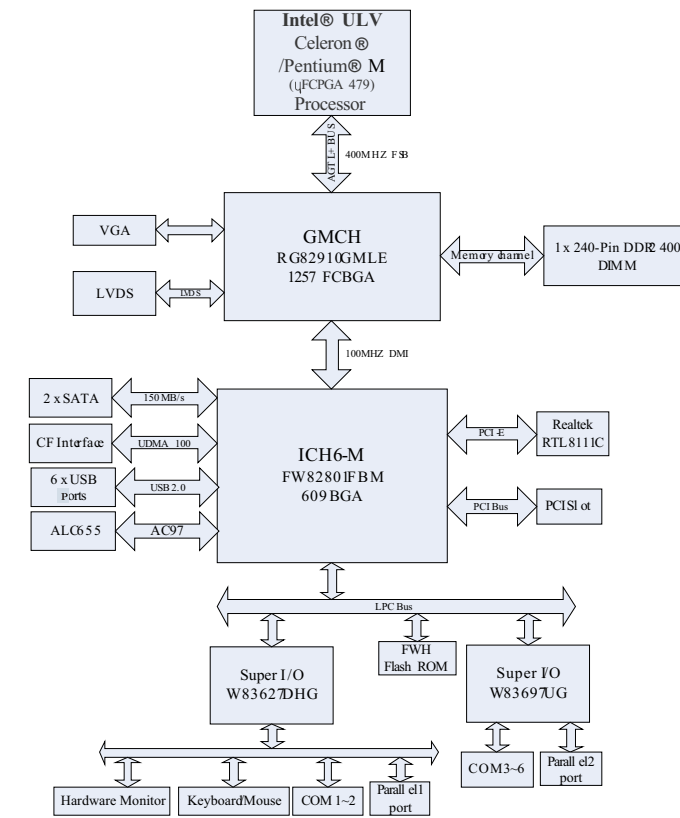


# EC7-1711CLDNA

Mini-ITX SBC with Low Power CPU and LVDS/VGA/SSD/6COM



## Board Diagram



## Available Accessories

Part Number	Name	Description	Qty.
2340-002131	Cooler/RoHS	Fan + heat sink + backplate/EPN-41CES-01-GP	1
2360-002571	Dual USB ports with bracket/B4/RoHS	Two USB ports to one 2x5 Pin, length: 210mm/RoHS	1
2360-005051	Parallel port cable/RoHS	Parallel port cable, DB25 connector to 26 Pin, length: 300mm/RoHS	1
2360-002621	Serial port cable/RoHS	DB9 connector to IDC 2x5 Pin connector (2.54mm pitch), length: 250mm/RoHS	5
2360-018011	SATAHDD cable/RoHS	(7p-7p), length: 300mm/RoHS	2
---	Setup Guide/RoHS	AMI BIOS Setup Guide (for CORE8)	1
---	User's Manual/RoHS	EC7-1711 series	1
---	Driver CD/Protective film/RoHS	EC7-1711 series	1

## Ordering Information

Part Number	Model Number	Description
0030-001180	EC7-1711CLDNA/600M	Motherboard/Celeron-M 600M
0030-001190	EC7-1711CLDNA/1G	Motherboard/Celeron-M 1G

## Features

- Onboard Intel® 400MHz FSB ULV Celeron® M CPU
- Supports 1 x 240-pin DIMM, up to 1GB DDR2 400 memory
- Supports 1 x 10/100/1000Mbps Ethernet interface
- Intel® 910GMLE chipset, supporting VGA+LVDS dual display
- Supports 6 x USB2.0, 6 x COM, 2 x SATA, 2 x LPT, 1 x PCI, 1 x CF, 8 x GPIO

## Display

Chipset	Intel® 910GMLE chipset integrated
Memory	128MB shared memory
Resolution	VGA mode up to 1600 x 1200@85Hz LVDS mode up to 1600 x 1200@18-bit
Dual Display	Supports VGA+LVDS independent dual display

## Ethernet

Chipset	Realtek RTL8111C
Speed	10/100/1000Mbps
Connector	1 x RJ45

## Mechanical and Environmental

Dimensions	170mm x 170mm
Operating Temperature	0°C~60°C
Storage Temperature	-25°C~75°C
Operating Humidity	5%-90%, non-condensing

## Power

Power Supply	Supports ATX power supply
Power Consumption	Typical 17W(Celeron M 600MHz/512MB)

## Operating System

Windows OS	Windows 2000/Windows XP
Embedded OS	Linux/XP Embedded



## Specifications

System	
Processor	Onboard Intel® ULV 400MHz FSB Celeron® M 600M/1G(1G optional) CPU
Chipset	Intel® 910GMLE + ICH6M
Memory	1 x 240-pin DDR2 DIMM, supporting up to 1GB DDR2 400 Memory
Hardware Monitor	Monitors CPU temperature, voltage and watchdog timer
Watchdog Timer	Software programmable supports 1~255 sec./min. timer system reset or interrupt
Expansion Interface	1 x PCI slot, supporting 3 x PCI expansion card
Storage	
IDE	N/A
Serial ATA	2 x serial ATA 150MB/s interface
CF	1 x CompactFlash Socket Type I/II
DOC/DOM	N/A
I/O Interface	
USB	6 x USB2.0 port, available interfaces of 2 x USB port and 2 x 9-pin header onboard
Serial Port	5 x RS-232, 1 x RS-232/422/485(COM1), available interfaces of 1 x DB9 and 5 x 10-pin header onboard
Parallel Port	2 x LPT, available interfaces of 1 x DB25 and 1 x 26-pin header onboard
IrDA	N/A
GPIO	4 x GPI, 4 x GPO
Audio	Supports AC'97, available interfaces of Speaker-out, Line-in and Mic-in