

RPT & RGT Terminal Blocks

Key Features

- Tin-plated binding posts and brass washers and nuts provide corrosion-resistant connections
- High-impact shell for maximum durability
- Polyurethane potting offers insulation-resistance between pairs
- Variety of configurations for installation flexibility

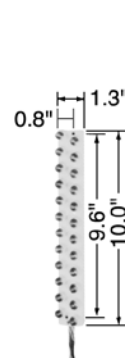
Description

RPT and RGT series terminal blocks are made of high-impact plastic, and where applicable, are potted with a high dielectric durable polyurethane compound. The service wire binding posts are tin-plated brass; nuts and washers are also made of brass.

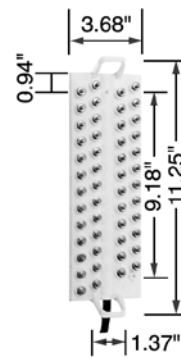
The RPT and RGT series terminal blocks are available back-stubbed (RGT), bottom-stubbed (RPT), non-stubbed (RGT), unprotected, and in 12 to 25-pair configurations. The terminal blocks are stubbed with 24-gauge, fully color-coded insulated jacketed stubs, which are either air core or filled.

Application

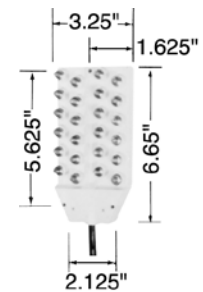
The RPT and RGT series fixed-count terminal blocks are designed specifically for use in outside building terminals and buried cable pedestals and closures. The terminal blocks are used in fixed-count applications to accommodate SAC (Serving Area Concept) systems.



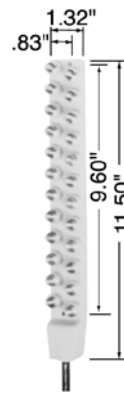
RGT1236



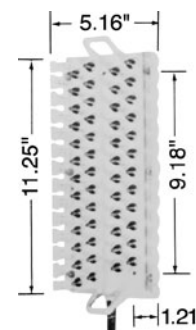
RGT25



RPT12



RPT12L



RPT25

RPT & RGT Terminal Blocks

Ordering Matrix

Block Style	RGT = Back stub or stubless RPT or RIS = Bottom stub
Pair Count	12 = 12-pair 25 = 25-pair
Protection Type	blank = Unprotected
Cable Type	blank = Air core non-shielded E = Air core shielded LS = Less stub (stubless)
Stub Length	18 = 18-in. 36 = 36-in.

Ordering Information

Catalog Number	Part Number	Description
Back Stub or Stubless		
RGT1218	F002658	12-pair unprotected; 18" air core stub
RGT1236	F002591	12-pair unprotected; 3' air core stub
RGT12LS	F002613	12-pair unprotected less stub
RGT25LS	F002608	25-pair unprotected less stub
Bottom Stub		
RIS6	F005013	6-pair unprotected; 18" air core stub
RPT12	F002580	12-pair unprotected (wide body); 4' air core stub
RPT12L	F002582	12-pair unprotected (narrow body); 4' air core stub
RPT25	F002586	25-pair unprotected; 4' air core stub

NOTE: For testing equipment, tools, etc. see the Accessories section of this catalog.

Emerson Network Power.

The global leader in enabling Business-Critical Continuity™.

- AC Power
- Embedded Power
- Precision Cooling
- Connectivity
- Infrastructure Management & Monitoring
- Racks & Integrated Cabinets
- DC Power
- **Outside Plant**
- Services
- Embedded Computing
- Power Switching & Controls
- Surge Protection

Emerson Network Power Energy Systems
4350 Weaver Parkway, Warrenville, IL 60555
Toll Free: 800-800-1280 (USA and Canada)
Telephone: 440-246-6999 Fax: 440-246-4876
Web: EmersonNetworkPower.com/OSP

© 2009 Emerson Network Power Energy Systems, North America, Inc. All rights reserved.
Emerson®, Emerson Network Power™, Business-Critical Continuity™, NetReach™, NetSpan™ and NetXtend™ are trademarks of Emerson Electric Co. and/or one of its subsidiaries.
Printed in USA

