

Q3M AND Q6M SERIES

2/2 NORMALLY CLOSED

Valves are actuated by a direct solenoid. Maximum operating pressure is proportional to the orifice size. A smaller orifice enables a higher operating pressure.

SPECIFICATIONS

Pressure

Operating pressure range:

Refer to Table.

Minimum pressure differential:

0 kPa (0 psi)

Fluid Temperatures

Nitrile and Viton seals:

Fluid temperature range

-34°C to +82°C (-29°F to +180°F)

EPDM seals:

Fluid temperature range

0°C to +95°C (+32°F to +203°F)

Ambient Temperatures

-34°C to +40°C (-29°F to +104°F)

Approvals and Standards

ISO 9001 Quality Management System,

Certificate: QEC0366

Watermark certificate number:

WMKA00172

AGA Certificate: 2870 AS4629 Class 1

(1Q6M and all Q3M)

C-Tick Mark, Supplier Code: N282

UL Files YIOZ.MH9011

YIOZ2.MH9011

CE Compliance to Directives

2006/95/EC and 2004/108/EC

RoHS Compliance to Directive

2002/95/EC

Part Number Code:

4 Q 3 M - A N B N T - 7 0 4 3

Orifice Size

1	1.6 mm (0.062")	Q3M	Q6M
2	2.4 mm (0.093")	Q3M	-
3	2.8 mm (0.109")	Q3M	-
4	3.2 mm (0.125")	Q3M	Q6M
6	6.4 mm (0.250")	-	Q6M

Valve Size

Q3M	1/8" Pipe Thread
Q6M	1/4" Pipe Thread

Internal Construction

A	Normally closed, for use with either AC or DC coils
---	---

Special Features

N	No special features
1	Class 1 Australian Gas Approval (Brass/Alum, Nitrile/Viton)
E	UL Recognised Component (Q3M, Brass, AC coils only)
U	UL Listed (Q3M, Brass, AC coils only)
W	Australian Watermark Approval (Brass-EPDM only)
X	Cleaned for Oxygen service (Viton seals only)

Body Material

A	Aluminium – Alloy 2011
B	Brass – Alloy 352 (DR – Dezincification Resistant)
N	Brass with electroless nickel plating
H	Acetal (Delrin)
S	Stainless Steel – Alloy 303

Seal Material

E	EPDM
N	Nitrile
V	Viton

Port Thread

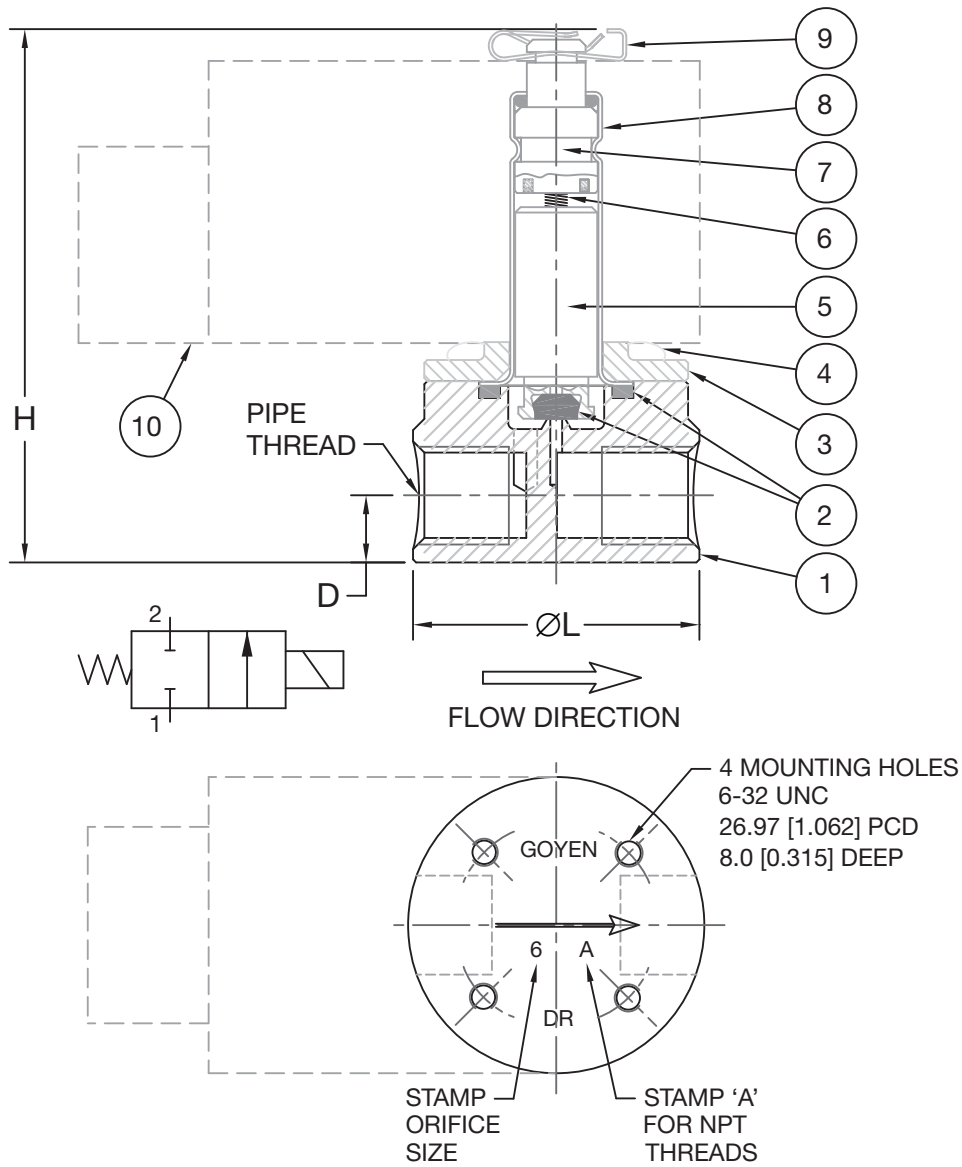
T	RC Thread (BSPT) – brass, nickel-plated and aluminium bodies
P	RP Thread (BSPP) – acetal and stainless steel bodies
A	NPT Thread – all body materials

Coil Options
See page 32.



OPERATING PRESSURE RANGE

VALVE MODEL	PRESSURE	
	KPA	PSI
1Q3M	0 to 2550	0 to 370
2Q3M	0 to 1000	0 to 150
3Q3M	0 to 700	0 to 100
4Q3M	0 to 500	0 to 75
1Q6M	0 to 2550	0 to 370
4Q6M	0 to 500	0 to 75
6Q6M	0 to 80	0 to 12



DIMENSIONS

VALVE MODEL	PIPE THREAD	ØL		H		D	
		MM	INCH	MM	INCH	MM	INCH
Q3M	1/8"	35.0	1.37	65.0	2.56	7.4	0.29
Q6M	1/4"	38.0	1.50	70.0	2.76	8.7	0.34

CONSTRUCTION

ITEM	DESCRIPTION	MATERIAL
1	Body	See part number code
2	Seals	Nitrile, Viton or EPDM
3	Ferrule Retainer	Same as body material
4	Screws	302 Stainless Steel
5	Plunger	430FR Stainless Steel
6	Plunger Spring	304 Stainless Steel
7	Iron-Top	430FR Stainless Steel
8	Ferrule Tube	305-4F Stainless Steel
9	Coil Clip	Plated steel
10	Coil Assembly	Refer to page 32.

CONNECTION AND FLOW

VALVE MODEL	PIPE SIZE		ORIFICE SIZE		FLOW FACTOR	
	MM	INCH	MM	INCH	CV	KV
1Q3M	3	1/8	1.6	0.062	0.1	0.09
2Q3M	3	1/8	2.4	0.093	0.2	0.17
3Q3M	3	1/8	2.8	0.109	0.3	0.26
4Q3M	3	1/8	3.2	0.125	0.5	0.43
1Q6M	6	1/4	1.6	0.062	0.1	0.09
4Q6M	6	1/4	3.2	0.125	0.5	0.43
6Q6M	6	1/4	6.4	0.250	0.7	0.60

SPARE PARTS KITS

Kits consist of plunger, spring and seals.

MODEL	NITRILE	VITON	EPDM
Q3M	KM1347	KM1348	KM1469
Q6M	KM2149	KM2147	KM2148