

Access-T 1500™

Modular T1/FT1 Network Access CSU/DSU System

The Access-T 1500 and its application modules combine the features of a multiplexer, T1 CSU, and multi-port DSU to help organizations take full advantage of T1 and FT1 networks. This hot-swappable, modular system is ideal for Central Office and hub applications when 100% uptime is critical.

One 19" rack-mountable shelf can accommodate 15 application modules with up to 30 single-port T1 connections or 15 drop-and-insert auxiliary line ports and 30 multiplexed DTE ports.

In addition to providing high CSU/DSU density in a small amount of rack space, the Access-T 1500 also enables two full shelves, 30 DSUs, to be managed from a single point, via SNMP, and requires only one IP address for both shelves.

Advanced performance management and diagnostic functions cut maintenance costs; and user-defined alarms and 24-hour performance registers provide crucial performance information when it's needed. Some modules also support true end-to-end monitoring of FT1 lines via RDL.

The Access-T 1500 provides flexible, high-density CSU/DSU configurations that reduce the cost-per-port while optimizing T1/FT1 usage.

BENEFITS

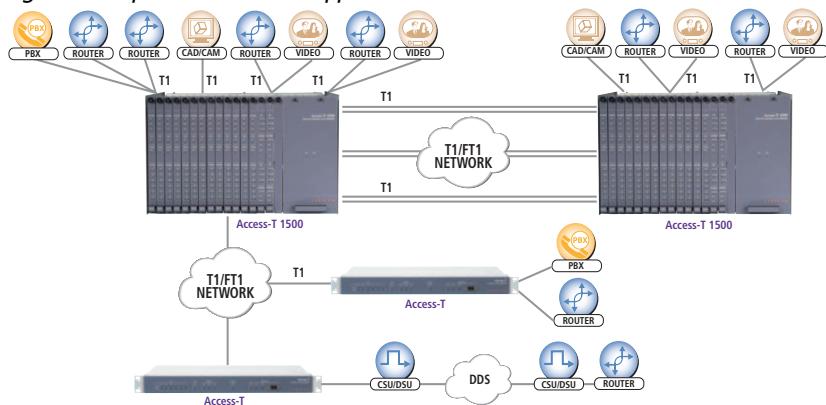
- Increases the cost-effectiveness and efficiency of T1/FT1 bandwidth and access lines
- Reduces rack costs by housing 30 single T1 connections or 15 drop-and-insert ports and 30 multiplexed DTE ports in a single 19" shelf
- Simplifies network architecture and management by allowing two full shelves to be managed from a single location, with one IP address
- Provides advanced performance management and diagnostic features to increase system reliability



SPECIFICATIONS	
Power	
AC	115 V AC , 50 to 60 Hz
DC	-48 V DC office battery (-43 to -53 V) (special order)
Amps/BTUs	2A@115V AC, 587 BTUs/hr (full chassis), 33.1 BTUs/hr per module
Network Interface	
Line Rate	T1: 1.544 Mbps
Framing	T1: D4, ESF
Line Coding	T1: AMI, B8ZS
Physical Interface	RJ48C
DTE Interface	
Data Rate	N x 56 Kbps or N x 64 Kbps (N = 1 to 24)
Electrical	EIA530 configurable to V.35 or RS442/449
Physical Interface	DB25S
Management	
Ports	Front- and rear-panel RS-232 ports; rear-panel RS-485 chain port
Terminal Interface	Menu-driven, VT100 or TV 925 ASCII terminal, to 9600 baud
SNMP Interface	RS-232 (SLIP/PPP); DS1 MIB (RFC 1406)
Physical Characteristics	
Usage	19"/23" rack-mountable shelf
Size	10.5" H x 17" W x 18" D (26.6 x 43.2 x 45.7 cm) per shelf
Shipping Weight	35 lb. (15.87 kg)
Environment	
Operating	0 to 50° C (32 to 122° F); Up to 95% relative humidity, non-condensing

Typical Application

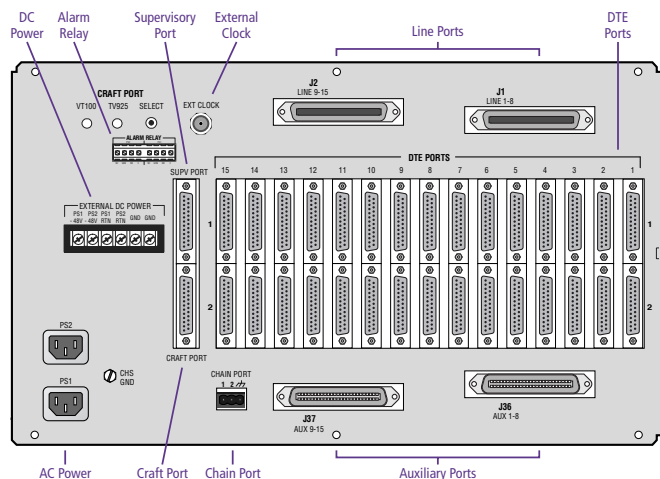
With its high-density modular design and low cost-per-port, the Access-T 1500 is ideal as a hub for single or multiplexed T1 and FT1 applications.



BACKPANEL AND CABLE GUIDE

Description	Model No.
Power	
AC power cable, 6 ft.	Provided
DC power cable, 10 ft	Provided
Terminal Supervisory port (DB25P)	
DB25P to DB25S, xx ft. (xx=006, 015)	080-2613-0xx
Network Port (RJ48C)	
DTE Port	
HSSI (SCSI-II 50-pin S)	
SCSI-II P to SCSI-II P, xx ft. (xx = 06, 15, 25 or 50)	070-1203-0xx
HSD (EIA530, DB25S)	
V.35	
DB25P to M34S adapter, 1 ft.	DATAADAP-V35
DB25P to M34S, (EIA530 to V.35) xx ft. (xx = 001, M06, 015, 030, 050)	080-2443-xxx
DB25P to M34P, (EIA530 to V.35) xx ft. (xx = 06, 15, 25 or 50)	080-2263-0xx
EIA530	
DB25P to DB25S, (EIA530 to EIA530) xx ft. (xx = 06, 15, 25 or 50)	080-2333-0xx
DB25P to DB25P, (DCE to DTE) xx ft. (xx = 06, 15, 25 or 50)	080-2433-0xx
DB25P to DB25P (DCE to DCE), xx ft. (xx = 06, 15, 25 or 50)	080-2373-0xx
RS449	
DB25P to DC37S, (EIA530 to RS449) xx ft. (xx = 06, 15, 25 or 50)	080-2453-0xx
DB25P to DC37P, (EIA530 to RS449) xx ft. (xx = 06, 15, 25 or 50)	080-2273-0xx

Note: M = molded connector, P = plug (male), and S = socket (female).



ORDERING INFORMATION

Access-T 1500 Models	Model No.
Access-T 1500, 15-slot shelf, one AC power supply	ACST-1500-AC01
Access-T 1500, 15-slot shelf, one DC power supply (special order)	ACST-1500-DC01
Access-T 1500, 15-slot shelf, two AC power supplies	ACST-1500-AC02
Access-T 1500, 15-slot shelf, two DC power supplies (special order)	ACST-1500-DC02
Access-T 1500, 15-slot shelf, one AC and one DC power supply (special order)	ACST-1500-ACDC
Access-T 1500 management interface controller module	ACST-MIC
Access-T 1500 management interface controller plus CSU/DSU, 1 DTE port, RDL functionality, no drop-and-insert	ACST-AM-MIC
Access-T 1500 module with 1 CSU/DSU, 2 DTE ports, T1 drop-and-insert, no RDL	ACST-AM-01
Access-T 1500 module with 2 CSU/DSUs, each with 1 DTE port, no drop-and-insert	ACST-AM-101-D
Related Products	
Power supply, AC, for ACST-1500	PWR-PS01
Power supply, DC, for ACST-1500	PWR-PS03
Blank panel, 1 slot	ACST-BP01
Blank panel, 3 slots	ACST-BP03
Blank panel, 6 slots	ACST-BP06
Patch panel, 19", 24 RJ48 channels for T1 lines, 3ft.	ACST-PPL-01
Patch panel, 23", 24 RJ48 channels for T1 lines, 3ft.	ACST-PPL-02
Patch panel, 19", 24 RJ48 channels for T1 lines, 10ft.	ACST-PPL-03
Patch panel, 19", 24 RJ48 channels for T1 lines, 40ft.	ACST-PPL-04
Patch panel, 19", 24 RJ48 channels for T1 drop-and-insert, 3 ft.	ACST-PPA-01
Patch panel, 23", 24 RJ48 channels for T1 drop-and-insert, 3 ft.	ACST-PPA-02
Patch panel, 19", 24 RJ48 channels for T1 drop-and-insert lines, 10ft.	ACST-PPA-03
Patch panel, 19", 24 RJ48 channels for T1 drop-and-insert lines, 40ft.	ACST-PPA-04
Converter module, RJ48C to DA15S screw down	A80-LAK6-001
Converter module, RJ48C to DA15P screw down	A80-LAK7-001
Mounting ears and hardware for ACST-1500, 19" rack	A87-AK01-001
Mounting ears and hardware for ACST-1500, 23" rack	A87-AK02-001