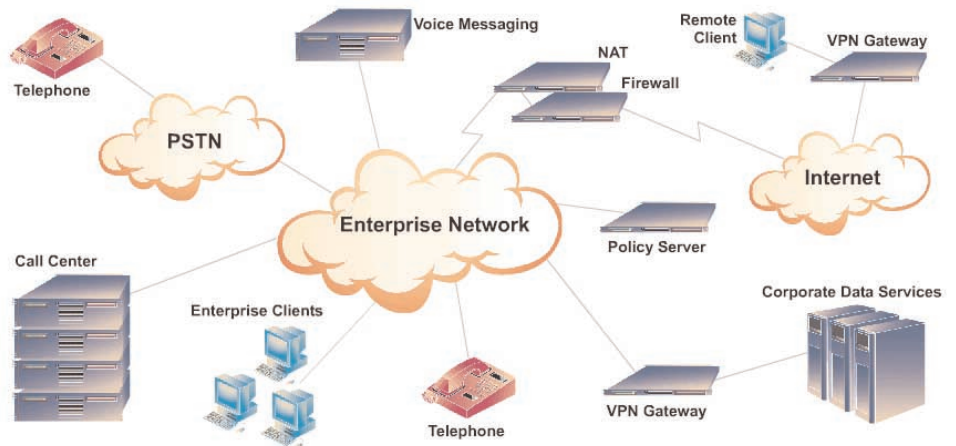


PCI/ISA SINGLE BOARD COMPUTER



RadiSys Building Blocks for Enterprise Applications



FEATURE SUMMARY

- Dual Intel 1GHz Pentium III processors
- Serverworks ServerSet III LE chipset
- Up to 2GB SDRAM
- AGP Graphics with 4MB VRAM
- Dual channel Ultra2 SCSI Controller
- Watchdog timer
- RadiSys Enhanced PhoenixBIOS*
- Peripheral Connectivity
 - Video
 - Ethernet
 - SCSI
 - IDE
 - USB
 - Floppy
 - Mouse
 - Keyboard
 - Serial
 - Parallel

The RadiSys EPC®-2324 SBC incorporates highly integrated modular designs from proven technologies using the Intel® Pentium III* processor and the ServerWorks® ServerSet® III LE PCI chipset. Utilizing the Pentium III in a dual CPU configuration with up to 2GB of memory provides a tremendous performance advantage.

Along with its superior processing and memory capabilities, the EPC-2324 also hosts a number of high performance features that lends itself very well to enterprise applications. Dual 10/100BaseT Ethernet network interfaces combine for high bandwidth processing. An optional dual channel Ultra2 SCSI interface is provided. This interface supports both low voltage differential (LVD) and single-ended (SE) drives.

The EPC-2324 is fully featured, thereby eliminating the need for additional standard I/O peripheral cards enabling the user to maximize the availability of back-plane slots. A wide variety of on-board peripherals are supported such as AGP Video, IDE, USB, Serial and Parallel ports.

The EPC-2324 is a high-performance solution for computer telephony, telecommunication, and enterprise applications such as unified messaging, Automatic Call Distributor (ACD), Interactive Voice Response (IVR) and Integrated Access Devices (IAD).

SPECIFICATIONS

ORDERING INFORMATION

Call for pricing and availability.
Refer to the order codes below.

DESCRIPTION

EPC-2324 with
Dual 1GHz Pentium III
1GB PC-133 SDRAM
Ultra2 SCSI
MODEL • EPC2324-1GHZD-1G

OPTIONS:

EPC-2324 with
Single 1GHz Pentium III
512MB PC-133 SDRAM
Ultra2 SCSI
MODEL • EPC2324-1GHZS-512

FEATURE	FUNCTION	DESCRIPTION
Physical	Dimensions	13.28" x 4.80" (337.3 mm x 121.9 mm)
Bus Interface	ISA	16-bit 8.33MHz, fully buffered
	PCI	32-bit 33MHz, fully buffered 64-bit 66MHz, fully buffered
Processor System	CPU	Single or Dual 1GHz Pentium III
	Cache	256KB internal L2
Processor System	Chipset	ServerWorks ServerSet III LE NB6635 North Bridge 3.0 LE/IB6566 South Bridge
	Processor Side Bus	133MHz
Memory	Technology	3.3V registered, PC-133, ECC
	Capacity	512MB or 1GB (2GB maximum)
	Sockets	Two 168-pin DIMM
Video	Controller	Asiliant 69030 SVGA controller with 4MB VRAM
	Monitor Support	CRT
Ethernet	Interface	Two 10/100BaseT
	Controller	Intel 82559
Hard Drive Interface	Interface	Dual channel Ultra2 SCSI
	Controller	Adaptec AIC 7890 for LVDS and AIC 3860 for SE
	Interface	IDE
	Controller	ServerWorks IB6566
Floppy	Interface	Standard floppy
PCI Bracket I/O	CRT	One 15-pin VGA D-sub connector
	Ethernet	Two RJ-45 connectors with activity LED's
	Keyboard/Mouse	One PS/2 mini DIN connector (shared)
Additional I/O	Floppy	One 34-pin header
	IDE	One 40-pin header
	SCSI	Two 68-pin high density connectors
	USB	One 4-pin headers
	Serial Port	Two 10-pin headers
	Parallel Port	One 26-pin header
	Keyboard/Speaker	One 8-pin header
Operating System	Compatibility	Windows* 95/98, Windows NT,* Windows 2000, Solaris* 2.8, Red Hat* Linux, SCO Open Server 5.0.x, SCO UnixWare* 7.1.0
Drivers	Video	Windows 95/98, Windows NT, Windows 2000, SCO UnixWare 7, Red Hat Linux
	SCSI	Windows 95/98, Windows NT, Windows 2000, SCO UnixWare 7, Solaris 2.x, Red Hat Linux
	Ethernet	Windows 95/98, Windows NT, Windows 2000, SCO UnixWare 7, Red Hat Linux
Miscellaneous	Real Time Clock	DS1287 compatible
	On-board Flash	512KB
	Watchdog Timer	150 ms or 1.2 s timeout period
	BIOS	Can run diskless, headless, and/or without keyboard
Power Requirement	Power (typical)	100W (includes 2 CPU's and 2GB DRAM)
	Current	+3.3V +5V +12V -5V -12V - 19A 3A 0.1A 0.1A
Environment	Operating	Non-Operating
	Temperature	5°C to 50°C @ 200 LFM -40°C to 70°C
	Humidity	5% to 95% @ 40°C non-condensing 0 to 95% @ 40°C non-condensing
	Shock	1g for 10ms 30g for 10ms
	Vibration	0.5g @ 5 to 150Hz 3g @ 5 to 250Hz
	Altitude	15,000 ft (4,572 m) 50,000 ft (15,240 m)
Regulatory	Emissions	FCC Class A, CISPR Class B
Warranty		Two year, parts only



©2001 RadiSys Corporation. RadiSys and EPC are registered trademarks of RadiSys Corporation. SPIRIT is a trademark of RadiSys Corporation. *All other trademarks are the properties of their respective owners. All specifications within this document are subject to change without notice. 07-1200-01 1001

World Headquarters
5445 NE Dawson Creek Drive
Hillsboro, OR 97124 USA
Phone: 503-615-1100
Fax: 503-615-1121
Toll-Free: 800-950-0044
Customer Service: 800-256-5917
Product Support: 800-438-4769
www.radisys.com

International Headquarters
10 Centech Park
North Moons Moat Industrial Estate
Fringe Meadow Road, Redditch
Worcestershire, B98 9NR
United Kingdom
Phone: +44 (0) 1527 588800
Fax: +44 (0) 1527 588801