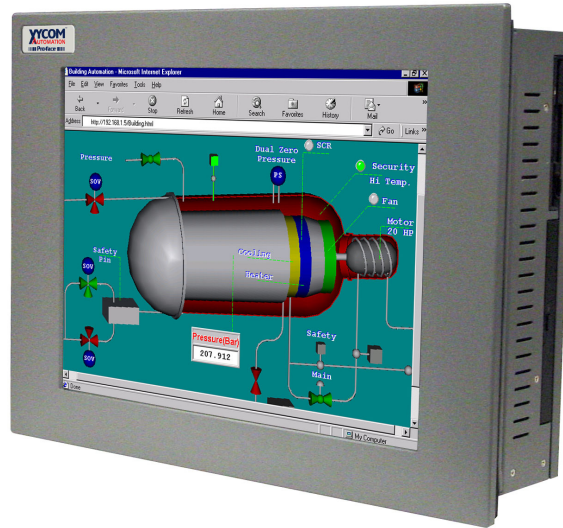


# 4115T Light-Duty Flat Panel Thinline Industrial Computer

DS-304115(A)

**NEW!  
Faster  
CPU!**



## FEATURES

- 15" flat panel TFT XGA (1024x768) color display
- Analog resistive touchscreen
- Intel® Pentium® 4 2.0 GHz CPU, 512 KB cache, 533 MHz system bus
- 4x AGP Video Controller with up to 64 MB Video RAM (shared with system RAM, 8 MB base)
- Up to 1 GB SDRAM (256 MB std)
- VGA port for remote monitor
- Supports using remote monitor and built-in display simultaneously
- Preloaded with Windows® 2000 operating system (option to load Windows® XP )
- One half-length PCI expansion slot
- 40 GB internal hard drive
- Side accessible 1.44 MB floppy drive and CD-ROM drive (with CD-R/W, DVD, and DVD-R/W upgrade options)
- Type II CompactFlash™ card slot (can accommodate IBM Microdrive™)
- Two RS-232 ports
- One configurable RS-232/422/485 port
- Parallel port
- Two USB 2.0 ports
- 10/100 BaseT Ethernet
- Audio input/output/mic
- PS/2 keyboard & mouse ports
- Software programmable watchdog timer
- Mounted with mounting clips or standard 75/100 mm VESA arm
- Power cable and drivers included
- 100-240 V AC power supply
- NEMA 4/4X/12, IP65 front panel
- 1-year warranty

Xycom Automation industrial computers (IPCs) are designed to provide processing power and versatility. The 4115T IPC offers a powerful processor with a wide range of features and an expansion slot. The 4115T also meets the rigorous requirements of the plant floor with a high-resolution LCD flat panel display in a rugged housing ideal for today's manufacturing environment.

### Higher Performance

The 2.0 GHz Intel Pentium 4 CPU with 512 KB cache and 533 MHz system bus drives the fastest and most demanding applications.

### Pre-loaded Operating Systems

All 4115T systems come standard with either Windows 2000 or Windows XP pre-loaded. The unit is also available with no operating system loaded.

### Sharp, Easy-to-Read Displays

A bright 15" TFT screen can display complex operations with clarity.

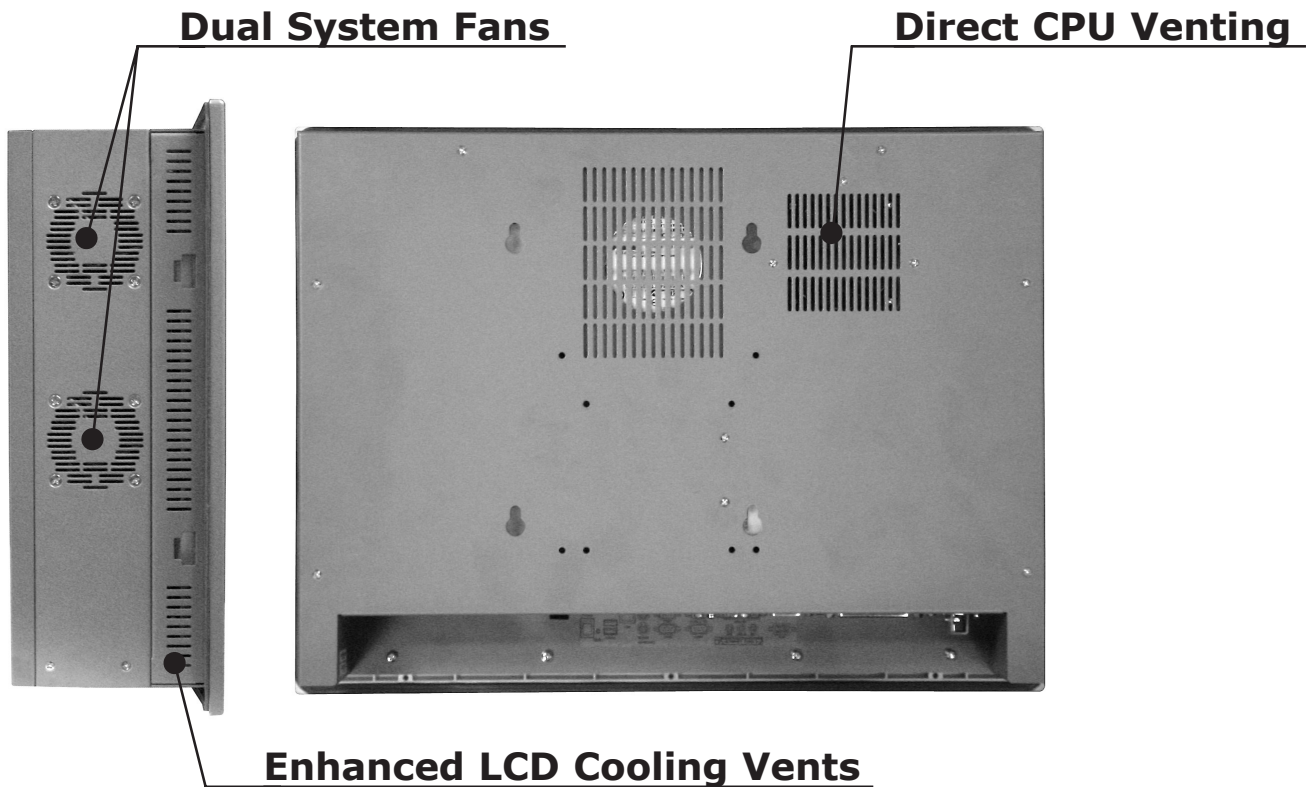
### Full Complement of I/O Ports

The 4115T comes standard with an extensive array of I/O ports (see right), including two high-speed RS-232 ports, one configurable RS-232/422/485 port,

- one parallel port, two USB ports, PS/2 mouse & keyboard ports, one 10/100 Mbps Ethernet port, one VGA port, and audio I/O (input, output, and mic).
- The VGA port can be used to connect a VGA monitor. The built-in display and external monitor can be used simultaneously (both showing the same image).



## PRODUCT COOLING ENHANCEMENTS

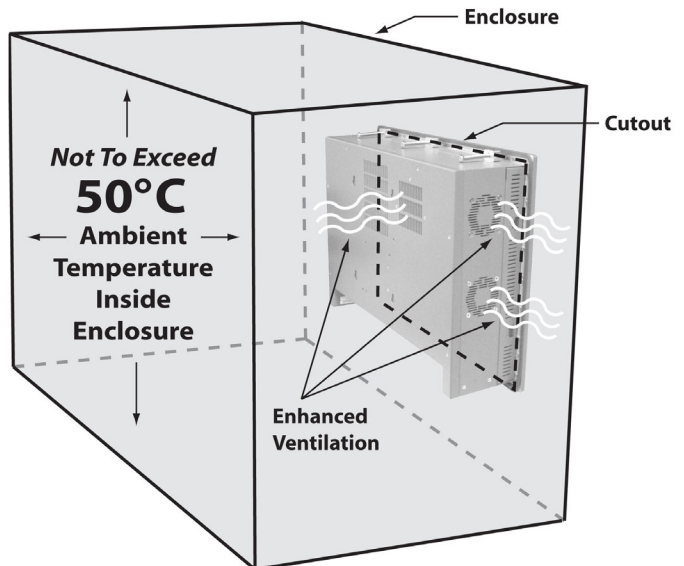


### Temperature Specification

The 4115T has a faster, more powerful CPU which generates more heat than units with lesser performing CPUs. Using Xycom's expertise and experience, we have added a secondary system fan, more LCD venting, and a direct CPU vent channel to dissipate the extra heat.

When installing a higher performing CPU equipped unit into an enclosure, extra care should be exercised to ensure that the ambient air around the unit (inside your enclosure, *not* outside the enclosure) does not exceed 50° C. Exceeding 50° C may cause premature degeneration of the unit.

Consult your enclosure manufacturer for proper sizing and/or cooling options. The product specifications and ratings section of this datasheet contains information your enclosure manufacturer will require.

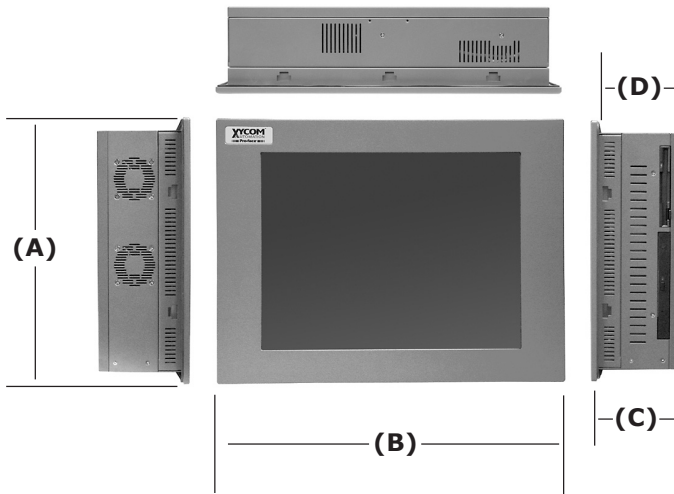


## PRODUCT CONFIGURATION

|                                  |   |
|----------------------------------|---|
| <b>Model</b>                     | <b>4115T</b>                            |
| <b>Display</b>                   | 15" LCD color display, 1024 x 768 (XGA) |
| <b>Operator Input</b>            | Analog resistive touchscreen            |
| <b>Processor</b>                 | Intel® Pentium® 4, 2.0 GHz              |
| <b>Preloaded OS <sup>1</sup></b> | None, Windows® 2000, or Windows® XP     |
| <b>Expansion</b>                 | One half-length PCI                     |

<sup>1</sup> The 4115T does not fully support DOS. DOS screens will not display full screen, all drivers are not available, and some DOS fonts may not be supported.

## PRODUCT DIMENSIONS

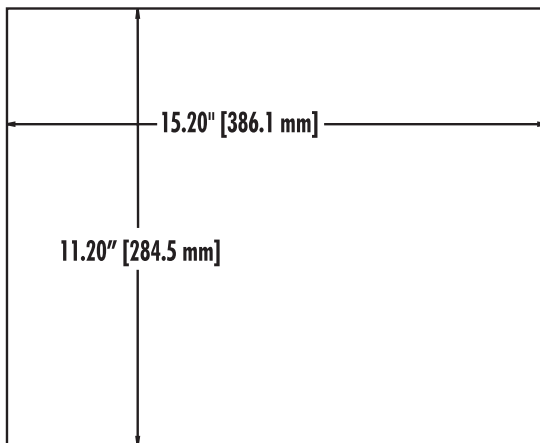


### 4115T Unit Dimensions

| Model              | 4115T             |
|--------------------|-------------------|
| Height (A)         | 12.17" (309.0 mm) |
| Width (B)          | 16.14" (410.0 mm) |
| Depth (C)          | 4.25" (108.0 mm)  |
| Mounting Depth (D) | 4.00" (102.6 mm)  |
| Weight             | 22 lbs (9.98 kg)  |

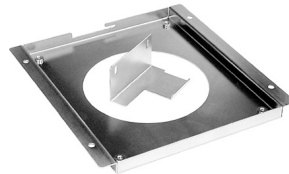
## MOUNTING DIMENSIONS

### 4115T Mounting



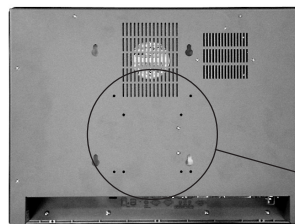
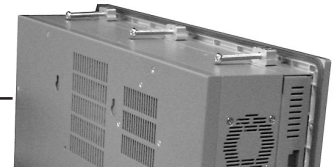
### Mounting Options

The 4115T is designed to be mounted directly into an equipment panel without requiring special mounting plates or brackets. It can also be mounted on a wall with the wall-mount adapter included in the mounting kit or it can be mounted on a standard 75/100 mm VESA swing or pendent arm. The 4115T is not NEMA rated if mounted outside of a panel.



**Wall Mount Bracket**

**Panel Mounting Clips**



**Wall Mount Pattern (x4)**

75/100 mm VESA Arm

## PRODUCT SPECIFICATIONS AND RATINGS

All of the specifications are subject to change without notice.

### Environmental

|   | Operating   | Nonoperating  |
|---|---|---|
| <b>Thermal</b>                              | 0°C to 50°C (32° TO 122°F)                                    | -20°C to 60°C (-4° to 140°F)                                  |
| <b>Humidity</b>                             | 20% to 80% RH, noncondensing                                  | 20% to 80% RH, noncondensing                                  |
| <b>Shock <sup>a</sup></b>                   | 15g peak acceleration, 11 msec duration                       | 30g peak acceleration, 11 msec duration                       |
| <b>Vibration <sup>a</sup><br/>5-2000 Hz</b> | 0.006" peak to peak displacement<br>1.0g maximum acceleration | 0,015" peak to peak displacement<br>2.5g maximum acceleration |
| <b>Altitude <sup>b</sup></b>                | Sea level to 10,000 ft. (3,000 m)                             | Sea level to 40,000 ft. (12,000 m)                            |

<sup>a</sup> These values are with solid state hard drives and not rotating media drives.

<sup>b</sup> Consistent with internal component specifications.

### Front Panel

- NEMA 4/4X/12

### Electrical

- AC power: 100-240 V AC, 3.0 A max., 125 W nominal\*, 50/60 Hz

### Regulatory Compliance

- CE (EN 55022, Class A; EN 6100-6-2; IEC 60950-1; EN 61000-3-2, Class A; EN 61000-3-3)
- FCC (47 CFR, Part 15, Class A)

### Safety Agency Approvals

- UL (UL 508) Listed
- cUL (CSA-C22.2, #142) Listed

\* Nominal Power is measured for a standard minimum configuration only. Any additional expansion and/or devices will increase the input power required.

## ORDERING INFORMATION

To create an order number, follow the conventions defined by the example order number and product configuration.

### Standard Configurations

| Order Number             | Description   |
|--------------------------|---|
| <b>4115T-2000-256-2K</b> | 4115T Industrial PC with a Pentium 4 2.0 GHz CPU, 256 MB DRAM, 40 GB hard drive, 1.44 MB floppy drive, CD-ROM, and Windows 2000 operating system. |

**4115T-**

Screen: 15", XGA (1024x768)

#### Processor

2000 Pentium 4 2.0 GHz

#### Memory

-256 256 MB DRAM  
-512 512 MB DRAM  
-1000 1 GB DRAM

#### Rotating Media<sup>a</sup>

blank CD-ROM installed  
-CDW CD-R/W installed  
-DVD DVD-ROM installed  
-DVDW DVD-R/W installed

#### Operating System

-2K Windows 2000 (multi-language)  
-XP Windows XP  
-NOS No operating system<sup>a</sup>

<sup>a</sup>When ordering no operating system, all required drivers will not be loaded and devices may not function properly.

### Warranty Information

The 4115T carries a one-year parts & labor warranty.

#### Important Notice for XP configurations:

Certain Microsoft® software product(s) included with this computer may use technological measures for copy protection. IN SUCH EVENT, YOU WILL NOT BE ABLE TO USE THE PRODUCT IF YOU DO NOT FULLY COMPLY WITH THE PRODUCT ACTIVATION PROCEDURES. Product activation procedures and Microsoft's privacy policy will be detailed during initial launch of the product, or upon certain reinstallations of the software product(s) or reconfigurations of this computer, or may be completed by Internet or telephone (toll charges may apply).

Xycom Automation, Inc.  
Phone: 734-429-4971  
Fax: 734-429-1010  
<http://www.xycom.com>

**Customer Support Hotline:**  
**734-944-0482**



© 2003-2005 Xycom Automation, Inc. Is a wholly owned subsidiary of Pro-face America, Inc. Specifications may change without notice. Xycom Automation is a trademark of Xycom Automation. Other brand or product names are the property of their respective owners.