

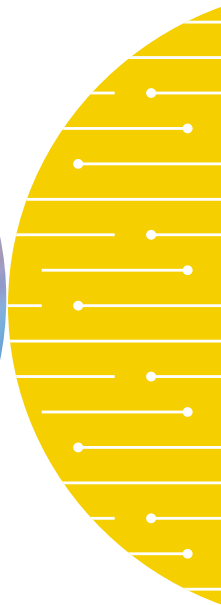
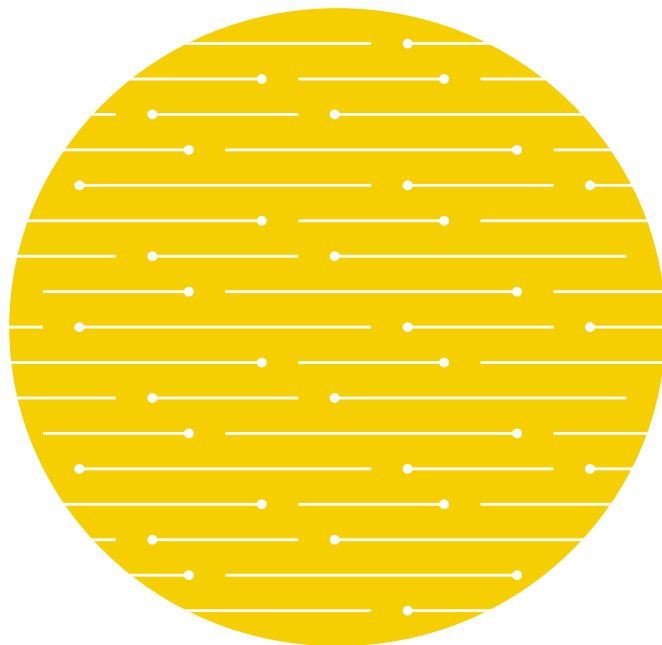


# Intel® Telecom Products

## Quick Reference Guide

April 2002

Intel in  
Communications



Intel® Dialogic® Boards ■ Intel® NetStructure™ Hardware  
Intel® NetMerge™ Software ■ Intel® Net Services

## Intel® Telecom Products

### Intel® Dialogic® Boards

- Conferencing Resource Boards
- Conferencing Boards
- Fax Boards, Analog
- Fax Boards, Digital
- Fax Resource Boards
- High Impedance Boards
- Interface Boards, Analog
- Interface Boards, Digital
- IP Boards, Digital
- PBX Integration Boards
- SS7 Boards
- Station Interface Boards
- Voice Boards, Analog
- Voice Boards, Digital
- Voice Resource Boards

### Platforms

- Intel® Converged Communications Platform
- SS7

### Intel® NetMerge™ Software

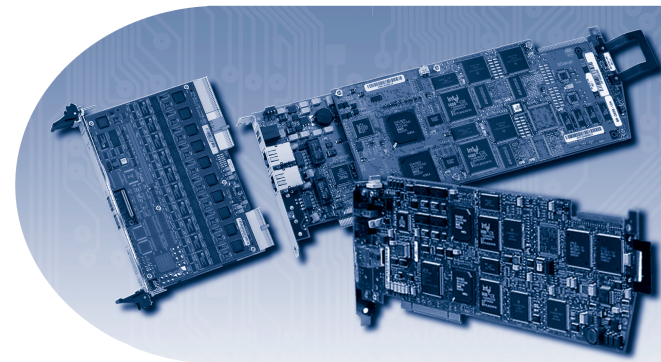
- CT Application Development Environment (CT ADE)
- CT Connect™ Software
- CT Media™ Software
- Software Development Kit and Run-Time Software
- SS7
- SS7 Development Packages

### Accessories

- PBX Integration
- Station Interface
- Cables
- Station Adapter
- Spare Parts for Septel SIU & DSC 110/ 210

### Intel® Net Services

- Technical Support
- Educational
- Consulting



Item Market Name	Voice Resources	Fax Resources	Conferencing Resources	CSP	FF	Resource Bus	Connection	O/S	Volts	Required Accessories
<b>Conferencing Resource Boards</b>										
DCB960SC	0	0	96	N	ISA	SCbus	None	NT/2000/Linux*	5	N
DCB320SC	0	0	32	N	ISA	SCbus	None	NT/2000/Linux	5	N
DMV2400APCI	240	0	120	Y	PCI	CT Bus	None	NT/2000/Linux	3.3, 5	N
DMV2400ACPCI	240	0	120	Y	cPCI	CT Bus	None	NT/2000/Linux	3.3, 5	Y
<b>Conferencing Boards</b>										
DMV600A2E1PCI	60	0	Y	Y	PCI	CT Bus	2-RJ48C	NT/2000/Linux	3.3, 5	N
DMV600A2EC1PCI	60	0	Y	Y	cPCI	CT Bus	2-RJ48C (via Rear I/O)	NT/2000/Linux	3.3, 5	Y
DMV480A2T1CPCI	48	0	Y	Y	cPCI	CT Bus	2-RJ48C (via Rear I/O)	NT/2000/Linux	5	Y
DMV480A2T1PCI	48	0	Y	Y	PCI	CT Bus	2-RJ48C	NT/2000/Linux	3.3, 5	N
<b>Fax Boards, Analog</b>										
VFX40ESCPLUS	4	4	0	N	ISA	SCbus	4-RJ11	NT/2000/Linux	5	N
VFXPCI	4	4	0	N	PCI	CT Bus	4-RJ11	NT/2000/Linux	5	N
CPi100	0	1	0	N	ISA	None	1-RJ11	NT/2000	5	N
CPD220	0	2	0	N	ISA	None	2-RJ14	NT/2000	5	N
CPi200BRI	0	2	0	N	ISA	None	1-RJ45	NT/2000	5	N
CPi400BRI	0	4	0	N	ISA	None	2-RJ45	NT/2000	5	N
CPi200PCI	0	2	0	N	PCI	None	1-RJ14	NT/2000	5	N
CPi400PCI	0	4	0	N	PCI	None	2-RJ14	NT/2000	5	N
CPi400	0	4	0	N	ISA	None	2-RJ45	NT/2000	5	N
VFX41JCTLS	4	Softfax*	0	N	PCI	CT Bus	4-RJ11	NT/2000/Linux	3.3, 5	N
XPi200	0	2	0	N	ISA	None	1-RJ14	NT/2000	5	N
CPi200	0	2	0	N	ISA	None	1-RJ14	NT/2000	5	N
CPi200B	0	2	0	N	PCI	None	1-RJ14	NT/2000	5	N
CPi400B	0	4	0	N	PCI	None	2-RJ14	NT/2000	5	N
<b>Fax Boards, Digital</b>										
DMF3001E1PCI	0	30	0	N	PCI	CT Bus	1-RJ48C	NT/2000/Linux	5	N
DMF2401T1PCI	0	24	0	N	PCI	CT Bus	1-RJ48C	NT/2000/Linux	5	N
CPi2400CTT1	0	24	0	N	PCI	CT Bus	1-RJ48C	NT/2000	5	N

Current as of System Release 5.1.1 for Windows NT\*, Windows 2000\*, and Linux\* operating systems.

# Boards

Item Market Name	Voice Resources	Fax Resources	Conferencing Resources	CSP	FF	Resource Bus	Connection	O/S	Volts	Required Accessories
<b>Fax Boards, Digital (continued)</b>										
CPI3000CTE1	0	30	0	N	PCI	CT Bus	1-RJ48C	NT/2000	5	N
<b>Fax Resource Boards</b>										
CP6SC	0	6	0	N	ISA	SCbus	None	NT/2000	5	N
CP12SC	0	12	0	N	ISA	SCbus	None	NT/2000	5	N
<b>High Impedance Boards</b>										
D160SCLSHIZISA	16	0	0	N	ISA	SCbus	DB-37	NT/2000	5	Y
DMV4802T1PCIHIZ	48	0	0	N	PCI	CT Bus	2-RJ48C	NT/2000	5	N
DMV6002E1PCIHIZ	60	0	0	N	PCI	CT Bus	2-RJ48C	NT/2000	5	N
DSL162CTUHIZ	16	0	0	N	PCI	SCbus	2-RJ48C	NT/2000	5	Y
<b>Interface Boards, Analog</b>										
LSI81SC	0	0	0	N	ISA	SCbus	DB-37	NT/2000/Linux	5	Y
LSI161SC	0	0	0	N	ISA	SCbus	DB-37	NT/2000/Linux	5	Y
<b>Interface Boards, Digital</b>										
DTI240SC	0	0	0	N	ISA	SCbus	1-RJ48C	NT/2000/Linux	5	N
DTI480SC	0	0	0	N	ISA	SCbus	2-RJ48C	NT/2000/Linux	5	N
DTI481SC	0	0	0	N	ISA	SCbus	2-RJ48C	NT/2000/Linux	5	N
DTI300SC75	0	0	0	N	ISA	SCbus	1-BNC	NT/2000/Linux	5	N
DTI300SC120	0	0	0	N	ISA	SCbus	1-RJ48C	NT/2000/Linux	5	N
DTI241SC	0	0	0	N	ISA	SCbus	1-RJ48C	NT/2000/Linux	5	N
DTI301SC75	0	0	0	N	ISA	SCbus	1-BNC	NT/2000/Linux	5	N
DTI600SC120	0	0	0	N	ISA	SCbus	2-RJ48C	NT/2000/Linux	5	N
DTI600SC75	0	0	0	N	ISA	SCbus	2-BNC	NT/2000/Linux	5	N
DTI601SC120	0	0	0	N	ISA	SCbus	2-RJ48C	NT/2000/Linux	5	N
DTI160SC75	0	0	0	N	ISA	SCbus	2-BNC	NT/2000/Linux	5	N
BRI160SC	0	0	0	N	ISA	SCbus	DB-37	NT/2000	5	N
DTI301SC120	0	0	0	N	ISA	SCbus	1-RJ48C	NT/2000/Linux	5	N
BRI80SC	0	0	0	N	ISA	SCbus	DB-37	NT/2000	5	N
DMN12004E1CPCI	0	0	0	N	cPCI	CT Bus	4-RJ48C (via Rear I/O)	NT/2000/Linux	5	Y
DMT9604T1CPCI	0	0	0	N	cPCI	CT Bus	4-RJ48C (via Rear I/O)	NT/2000/Linux	5	Y

Current as of System Release 5.1.1 for Windows NT\*, Windows 2000\*, and Linux\* operating systems.

Item Market Name	Voice Resources	Fax Resources	Conferencing Resources	CSP	FF	Resource Bus	Connection	O/S	Volts	Required Accessories
<b>Interface Boards, Digital (continued)</b>										
DMT12004E1CPCI	0	0	0	N	cPCI	CT Bus	4-RJ48C (via Rear I/O)	NT/2000/Linux	5	Y
DMN9604T1PCI	0	0	0	N	PCI	CT Bus	4-RJ48C	NT/2000/Linux	5	N
DMN9604T1CPCI	0	0	0	N	cPCI	CT Bus	4-RJ48C (via Rear I/O)	NT/2000/Linux	5	Y
DMN12004E1PCI	0	0	0	N	PCI	CT Bus	4-RJ48C	NT/2000/Linux	5	N
DMT9604T1PCI	0	0	0	N	PCI	CT Bus	4-RJ48C	NT/2000/Linux	5	N
DMT12004E1PCI	0	0	0	N	PCI	CT Bus	4-RJ48C	NT/2000/Linux	5	N
BRI80PCI	0	0	0	N	PCI	CT Bus	DB-37	NT/2000	5	N
BRI160PCI	0	0	0	N	PCI	CT Bus	DB-37	NT/2000	5	N
<b>IP Boards, Digital</b>										
DMIP4812T1C100	48	Y	0	Y	cPCI	CT Bus	2-RJ48C (via Rear I/O)	NT/2000/Linux	3.3, 5	Y
DMIP6012E1C100	60	Y	0	Y	cPCI	CT Bus	2-RJ48C (via Rear I/O)	NT/2000/Linux	3.3, 5	Y
DMIP241T1P100	24	Y	0	Y	PCI	CT Bus	1-RJ48C	NT/2000/Linux	5	Y
DMIP301E1P100	30	Y	0	Y	PCI	CT Bus	1-RJ48C	NT/2000/Linux	5	N
DMIP601C100BT	60	Y	0	Y	cPCI	CT Bus	None	NT/2000/Linux	3.3, 5	Y
DMIP4812T1P100	48	Y	0	N	PCI	CT Bus	2-RJ48C	NT/2000/Linux	3.3, 5	N
DMIP6012E1P100	60	Y	0	N	PCI	CT Bus	2-RJ48C	NT/2000/Linux	3.3, 5	N
<b>PBX Integration Boards</b>										
D82JCTU	8	Softfax	0	Y	PCI	CT Bus	Digital	NT/2000/Linux	5	Y
D82JCTUPCIUNIV	8	Softfax	0	Y	PCI	CT Bus	Digital	NT/2000/Linux	3.3, 5	Y
D42JCTU	4	Softfax	0	Y	PCI	CT Bus	Digital	NT/2000/Linux	3.3, 5	Y
D42DSL	4	0	0	N	ISA	None	Nortel	NT/2000	5	N
D42DSX	4	0	0	N	ISA	None	Mitel	NT/2000	5	N
DL300916	0	0	0	N	PCI	CT Bus	Digital	NT/2000	3.3, 5	N
DL300912	0	0	0	N	PCI	CT Bus	Digital	NT/2000	3.3, 5	N
DL300908	0	0	0	N	PCI	CT Bus	Digital	NT/2000	3.3, 5	N
DL300716	0	0	0	N	PCI	CT Bus	Digital	NT/2000	3.3, 5	N
DL300712	0	0	0	N	PCI	CT Bus	Digital	NT/2000	3.3, 5	N

Current as of System Release 5.1.1 for Windows NT\*, Windows 2000\*, and Linux\* operating systems.

# Boards

Item Market Name	Voice Resources	Fax Resources	Conferencing Resources	CSP	FF	Resource Bus	Connection	O/S	Volts	Required Accessories
<b>PBX Integration Boards Voice (continued)</b>										
DL300708	0	0	0	N	PCI	CT Bus	Digital	NT/2000	3.3, 5	N
DL300216	0	0	0	N	PCI	CT Bus	Digital	NT/2000	3.3, 5	N
DL300212	0	0	0	N	PCI	CT Bus	Digital	NT/2000	3.3, 5	N
DL300208	0	0	0	N	PCI	CT Bus	Digital	NT/2000	3.3, 5	N
<b>SS7 Boards</b>										
See SS7 at the end of this section										
<b>Station Interface Boards</b>										
MSI80SCGBL	0	0	0	N	ISA	SCbus	RJ-21X	NT/2000/Linux	5	Y
MSI160SCGBL	0	0	0	N	ISA	SCbus	RJ-21X	NT/2000/Linux	5	Y
MSI240SCGBL	0	0	0	N	ISA	SCbus	RJ-21X	NT/2000/Linux	5	Y
DISI32	32	0	0	N	PCI	CT Bus	RJ-21X	NT/2000	5	Y
MSI160PCIGBL	0	0	0	N	PCI	CT Bus	RJ-21X	NT/2000/Linux	5	Y
MSI80PCIGBL	0	0	0	N	PCI	CT Bus	RJ-21X	NT/2000/Linux	5	Y
DI0408LSA	4	0	0	N	PCI	CT Bus	RJ-21X/4 RJ-11	NT/2000	5	Y
<b>Voice Boards, Analog</b>										
PROLINE2V	2	0	0	N	ISA	None	2-RJ11	NT/2000	5	N
D41H	4	0	0	N	ISA	None	4-RJ11	NT/2000/Linux	5	N
D21H	2	0	0	N	ISA	None	2-RJ11	NT/2000	5	N
DIALOG4	4	0	0	N	ISA	None	4-RJ11	NT/2000	5	N
D41EPCI	4	0	0	N	PCI	CT Bus	4-RJ11	NT/2000/Linux	5	N
D41ESC	4	0	0	N	ISA	SCbus	4-RJ11	NT/2000/Linux	5	N
D41JCTLS	4	Sofffax	0	Y	PCI	CT Bus	4-RJ11	NT/2000/Linux	3.3, 5	N
D4PCI	4	0	0	N	PCI	None	4-RJ11	NT/2000	5	N
D160SCLSREV3	16	0	0	N	ISA	SCbus	DB-37	NT/2000/Linux	5	Y
D120JCTLS	12	Sofffax	0	Y	PCI	CT Bus	6-RJ14	NT/2000/Linux	5	Y
D120JCTLSREV2U	12	Sofffax	0	Y	PCI	CT Bus	6-RJ14	NT/2000/Linux	3.3, 5	Y
<b>Voice Boards, Digital</b>										
D480SC2T1	48	0	0	N	ISA	SCbus	2-RJ48C	NT/2000/Linux	5	N
D480JCT2T1	48	Sofffax (8)	0	Y	PCI	CT Bus	2-RJ48C	NT/2000/Linux	5	N
D240SC2T1	24	0	0	N	ISA	SCbus	2-RJ48C	NT/2000/Linux	5	N
D300SCE1120	30	0	0	N	ISA	SCbus	1-RJ48C	NT/2000/Linux	5	N

Current as of System Release 5.1.1 for Windows NT\*, Windows 2000\*, and Linux\* operating systems.

Item Market Name	Voice Resources	Fax Resources	Conferencing Resources	CSP	FF	Resource Bus	Connection	O/S	Volts	Required Accessories
<b>Voice Boards, Digital (continued)</b>										
D240PCIT1	24	0	0	N	PCI	CT Bus	1-RJ48C	NT/2000/Linux	5	N
D300PCIE175	30	0	0	N	PCI	CT Bus	1-BNC	NT/2000/Linux	5	N
D300PCIE1120	30	0	0	N	PCI	CT Bus	1-RJ48C	NT/2000/Linux	5	N
D300SC2E1120	30	0	0	N	ISA	SCbus	2-RJ48C	NT/2000/Linux	5	N
D300SC2E175	30	0	0	N	ISA	CT Bus	2-BNC	NT/2000/Linux	5	N
DMV960PCI4T1PCI	96	0	0	N	PCI	CT Bus	4-RJ48C	NT/2000/Linux	5	N
D240SCT1	24	0	0	N	ISA	SCbus	1-RJ48C	NT/2000/Linux	5	N
D600SC2E175	60	0	0	N	ISA	SCbus	2-BNC	NT/2000/Linux	5	N
DMV6004E1CPCI	60	0	0	N	cPCI	CT Bus	4-RJ48C (via Rear I/O)	NT/2000/Linux	5	Y
D300SCE175	30	0	0	N	ISA	SCbus	1-BNC	NT/2000/Linux	5	N
DMV9604T1CPCI	96	0	0	N	cPCI	CT Bus	4-RJ48C (via Rear I/O)	NT/2000/Linux	5	Y
DMV12004E1 PCI	120	0	0	N	PCI	CT Bus	4-RJ48C	NT/2000/Linux	5	N
D240JCTT1	24	Softfax (4)	0	Y	PCI	CT Bus	1-RJ48C	NT/2000/Linux	5	N
D300JCTE175	30	Softfax (4)	0	Y	PCI	CT Bus	1-BNC	NT/2000/Linux	5	N
D300JCTE1120	30	Softfax (4)	0	Y	PCI	CT Bus	1-RJ48C	NT/2000/Linux	5	N
D300JCTE175U	30	Softfax (4)	0	Y	PCI	CT Bus	1-BNC	NT/2000/Linux	3.3, 5	N
D300JCTE1120U	30	Softfax (4)	0	Y	PCI	CT Bus	1-RJ48C	NT/2000/Linux	3.3, 5	N
DMV12004E1CPCI	120	0	0	N	cPCI	CT Bus	4-RJ48C (via Rear I/O)	NT/2000/Linux	5	Y
DMV1200A4E1CPCI	120	0	0	Y	cPCI	CT Bus	4-RJ48C (via Rear I/O)	NT/2000/Linux	5	Y
DMV4804T1PCI	48	0	0	N	PCI	CT Bus	4-RJ48C	NT/2000/Linux	5	N
DMV6004E1PCI	60	0	0	N	PCI	CT Bus	4-RJ48C	NT/2000/Linux	5	N
D600JCT2E1120U	60	Softfax (8)	0	Y	PCI	CT Bus	2-RJ48C	NT/2000/Linux	3.3, 5	N
D600JCT2E1120	60	Softfax (8)	0	Y	PCI	CT Bus	2-RJ48C	NT/2000/Linux	5	N
D600JCT2E175	60	Softfax (8)	0	Y	PCI	CT Bus	2-BNC	NT/2000/Linux	5	N
DMV9604T1CPCI	96	0	0	Y	cPCI	CT Bus	4-RJ48C (via Rear I/O)	NT/2000/Linux	5	Y
D480JCTT1	24	Softfax (4)	0	Y	PCI	CT Bus	1-RJ48C	NT/2000/Linux	5	N
D600JCT1E1120	60	Softfax (4)	0	Y	PCI	CT Bus	1-BNC	NT/2000/Linux	3.3, 5	N

Current as of System Release 5.1.1 for Windows NT\*, Windows 2000\*, and Linux\* operating systems.

# Boards

Item Market Name	Voice Resources	Fax Resources	Conferencing Resources	CSP	FF	Resource Bus	Connection	O/S	Volts	Required Accessories
<b>Voice Boards, Digital (continued)</b>										
D480JCT1T1U	24	Softfax (4)	0	Y	PCI	CT Bus	1-RJ48C	NT/2000/Linux	3.3, 5	N
D600JCT1E1120U	30	Softfax (4)	0	Y	PCI	CT Bus	1-RJ48C	NT/2000/Linux	3.3, 5	N
D600SC2E1120	60	0	0	N	ISA	SCbus	2-RJ48C	NT/2000/Linux	5	N
D600SC2E175	60	0	0	N	ISA	SCbus	2-BNC	NT/2000/Linux	5	N
D600JCT1E175U	30	Softfax (4)	0	Y	PCI	CT Bus	1-BNC	NT/2000/Linux	3.3, 5	N
DMV960A4T1PCI	96	0	0	Y	PCI	CT Bus	4-RJ48C	NT/2000/Linux	3.3, 5	N
DMV1200A4E1PCI	120	0	0	Y	PCI	CT Bus	4-RJ48C	NT/2000/Linux	3.3, 5	N
D480JCT2T1U	48	Softfax (8)	0	Y	PCI	CT Bus	2-RJ48C	NT/2000/Linux	3.3, 5	N
D600JCT1E175U	30	Softfax (8)	0	N	PCI	CT Bus	1-BNC	NT/2000/Linux	3.3, 5	N
D240JCTT1U	24	Softfax (4)	0	Y	PCI	CT Bus	1-RJ48C	NT/2000/Linux	3.3, 5	N
DMV480A2T1PCI	48	0	Y	Y	PCI	CT Bus	2-RJ48C	NT/2000/Linux	3.3, 5	N
DMV480A2T1CPCI	48	0	Y	Y	cPCI	CT Bus	2-RJ48C (via Rear I/O)	NT/2000/Linux	5	Y
DMV4804T1CPCI	48	0	0	N	cPCI	CT Bus	4-RJ48C (via Rear I/O)	NT/2000/Linux	5	Y
DMV600A2E1PCI	60	0	Y	Y	PCI	CT Bus	2-RJ48C	NT/2000/Linux	3.3, 5	N
DMV600A2E1CPCI	60	0	Y	Y	cPCI	CT Bus	2-RJ48C (via Rear I/O)	NT/2000/Linux	5	Y
<b>Voice Resource Boards</b>										
DMV2400APCI	240	0	120	Y	PCI	CT Bus	None	NT/2000/Linux	3.3, 5	N
DMV2400ACPCI	240	0	120	Y	cPCI	CT Bus	None	NT/2000/Linux	3.3, 5	Y
D80SC	8	0	0	N	ISA	SCbus	None	NT/2000/Linux	5	N
D160SC	16	0	0	N	ISA	SCbus	None	NT/2000/Linux	5	N
D80PCI	8	0	0	N	PCI	CT Bus	None	NT/2000/Linux	5	N
D320SC	32	0	0	N	ISA	SCbus	None	NT/2000/Linux	5	N
D320PCI	32	0	0	N	PCI	CT Bus	None	NT/2000/Linux	5	N
D640SC	64	0	0	N	ISA	SCbus	None	NT/2000/Linux	5	N
D320JCT	32	Softfax (8)	0	N	PCI	CT Bus	None	NT/2000/Linux	3.3, 5	N
D160JCT	16	Softfax (4)	0	N	PCI	CT Bus	None	NT/2000/Linux	3.3, 5	N
D240SC	24	0	0	N	ISA	SCbus	None	NT/2000/Linux	5	N



Item Market Name	FF	Resource Bus	Connection	Volts	Notes
<b>SS7 Boards</b>					
<b>Septel ISA Boards</b>					
PCCS61E	ISA	SCbus	RJ-45	5	See Software and Accessories Tabs
PCCS61EU	ISA	SCbus	BNC	5	See Software and Accessories Tabs
PCCS61T	ISA	SCbus	RJ-45	5	See Software and Accessories Tabs
PCCS62E	ISA	SCbus	RJ-45	5	See Software and Accessories Tabs
PCCS62EU	ISA	SCbus	BNC	5	See Software and Accessories Tabs
PCCS62T	ISA	SCbus	RJ-45	5	See Software and Accessories Tabs
PCCS62TH	ISA	SCbus	RJ-45, Serial	5	See Software and Accessories Tabs
PCCS62EUH	ISA	SCbus	BNC	5	See Software and Accessories Tabs
PCCS62EBH	ISA	SCbus	RJ-45	5	See Software and Accessories Tabs
PCCS62SEB	ISA	SCbus	RJ-45	5	See Software and Accessories Tabs
PCCS62ST	ISA	SCbus	RJ-45	5	See Software and Accessories Tabs
<b>Septel PCI and CompactPCI* Boards</b>					
SPCI4	PCI	CT Bus	4-RJ-45	5	See Software and Accessories Tabs
CPM8	PCI	CT Bus	N/A	5	See Software and Accessories Tabs
CPR8RJ	PCI	CT Bus	8-RJ-45	5	See Software and Accessories Tabs
SPCI2S	PCI	CT Bus	2-RJ-45, Serial	5	See Software and Accessories Tabs

Current as of System Release 5.1.1 for Windows NT\*, Windows 2000\*, and Linux\* operating systems.



Item Market Name	Product Name	Description	O/S
<b>Intel® Converged Communications Platform</b>			
CCP210012L24SS	Intel® Converged Communications Platform 2100	CCP-12LSx24SI-S	Windows 2000

Item Market Name	Description	Connection	Notes
<b>SS7 Signaling Interface Unit (SIU) 131 and 231</b>			
SS7SIU231	SIU 231 Common Equipment	N/A	See Software and Accessories Tabs
SS7SIU131AEB	SIU 131, AC, Dual E1 RJ45, Single Serial Port	2-RJ-45, Serial	See Software and Accessories Tabs
SS7SIU131AEU	SIU 131, AC, Dual E1 BNC	2-BNC	See Software and Accessories Tabs
SS7SIU131A2ST	SIU 131, AC, Dual T1 RJ45, Single Serial Port	2-RJ-45, Serial	See Software and Accessories Tabs
SS7SIU131A4SEB	SIU 131, AC, Quad E1 RJ45, Dual Serial Port	4-RJ-45, 2 Serial	See Software and Accessories Tabs
SS7SIU131A4EU	SIU 131, AC, Quad E1 BNC	4-BNC	See Software and Accessories Tabs
SS7SIU131A4ST	SIU 131, AC, Quad T1, Dual Serial Port	4-RJ-45, 2 Serial	See Software and Accessories Tabs
SS7SIU131D2EB	SIU 131, DC, Dual E1, RJ45, Single Serial Port	2-RJ-45, Serial	See Software and Accessories Tabs
SS7SIU131D2EU	SIU 131, DC, Dual E1, BNC	2-BNC	See Software and Accessories Tabs
SS7SIU131D2ST	SIU 131, DC, Dual T1 RJ45, Single Serial Port	2-RJ-45, Serial	See Software and Accessories Tabs
SS7SIU131D4SEB	SIU 131, DC, Quad E1 RJ45, Dual Serial Port	4-RJ-45, 2 Serial	See Software and Accessories Tabs
SS7SIU131D4EU	SIU 131, DC, Quad E1 BNC	4-BNC	See Software and Accessories Tabs
SS7SIU131D4ST	SIU 131, DC, Quad T1 RJ45 Dual Serial Port	4-RJ-45, 2 Serial	See Software and Accessories Tabs

Item Market Name	Description	Notes
------------------	-------------	-------

<b>SS7 Digital Signaling Converter (DSC) 110</b>		
SS7DSC110A	Protocol Converter Common Equipment AC	See Software and Accessories Tabs
SS7DSC110D	Protocol Converter Common Equipment DC	See Software and Accessories Tabs

<b>SS7 Digital Signaling Converter (DSC) 210</b>		
SS7DSC210	Protocol Converter Common Equipment	See Software and Accessories Tabs

Current as of System Release 5.1.1 for Windows NT\*, Windows 2000\*, and Linux\* operating systems.



Item Market Name	Description	O/S	Notes
<b>Computer Telephony Application Development Environment (CT ADE)</b>			
CTADE2DEVKEY	2 ports, Hardware Key	NT/2000	See Boards Tab
CTADEOPROGKEY	Version 8.2, 0 port, Programmable Key	NT/2000	See Boards Tab
CTADEOPRGKEYUSB	Version 8, 0 port, Programmable Key USB	NT/2000	See Boards Tab
CTADE2DEVKEY	Version 8.2, 2 port, Development Kit	NT/2000	See Boards Tab
CTADE2RT	Version 8.2, 2 port, Run Time Hardware Key	NT/2000	See Boards Tab
CTADE4RT	Version 8.2, 4 port, Run Time Hardware Key	NT/2000	See Boards Tab
CTADE8RT	Version 8.2, 8 port, Run Time Hardware Key	NT/2000	See Boards Tab
CTADE12RT	Version 8.2, 12 port, Run Time Hardware Key	NT/2000	See Boards Tab
CTADE16RT	Version 8.2, 16 port, Run Time Hardware Key	NT/2000	See Boards Tab
CTADE24RT	Version 8.2, 24 port, Run Time Hardware Key	NT/2000	See Boards Tab
CTADE30RT	Version 8.2, 30 port, Run Time Hardware Key	NT/2000	See Boards Tab
CTADE48RT	Version 8.2, 48 port, Run Time Hardware Key	NT/2000	See Boards Tab
CTADE60RT	Version 8.2, 60 port, Run Time Hardware Key	NT/2000	See Boards Tab
CTADE64RT	Version 8.2, 64 port, Run Time Hardware Key	NT/2000	See Boards Tab
CTADE96RT	Version 8.2, 96 port, Run Time Hardware Key	NT/2000	See Boards Tab
CTADE120RT	Version 8.2, 120 port, Run Time Hardware Key	NT/2000	See Boards Tab
CTADE128RT	Version 8.2, 128 port, Run Time Hardware Key	NT/2000	See Boards Tab
CTADE192RT	Version 8.2, 192 port, Run Time Hardware Key	NT/2000	See Boards Tab
CTADE240RT	Version 8.2, 240 port, Run Time Hardware Key	NT/2000	See Boards Tab
CTADE256RT	Version 8.2, 256 port, Run Time Hardware Key	NT/2000	See Boards Tab
CTADE2DEVKEYUSB	Version 8, 2 port, Development Kit USB	NT/2000	See Boards Tab
CTADE2RTUSB	Version 8, 2 port, Run Time Hardware Key USB	NT/2000	See Boards Tab
CTADE4RTUSB	Version 8, 4 port, Run Time Hardware Key USB	NT/2000	See Boards Tab
CTADE8RTUSB	Version 8, 8 port, Run Time Hardware Key USB	NT/2000	See Boards Tab
CTADE12RTUSB	Version 8, 12 port, Run Time Hardware Key USB	NT/2000	See Boards Tab
CTADE16RTUSB	Version 8, 16 port, Run Time Hardware Key USB	NT/2000	See Boards Tab
CTADE24RTUSB	Version 8, 24 port, Run Time Hardware Key USB	NT/2000	See Boards Tab
CTADE30RTUSB	Version 8, 30 port, Run Time Hardware Key USB	NT/2000	See Boards Tab
CTADE48RTUSB	Version 8, 48 port, Run Time Hardware Key USB	NT/2000	See Boards Tab
CTADE60RTUSB	Version 8, 60 port, Run Time Hardware Key USB	NT/2000	See Boards Tab
CTADE64RTUSB	Version 8, 64 port, Run Time Hardware Key USB	NT/2000	See Boards Tab

Current as of System Release 5.1.1 for Windows NT\*, Windows 2000\*, and Linux\* operating systems.

Item Market Name	Description	O/S	Notes
<b>CT ADE (continued)</b>			
CTADE72RTUSB	Version 8, 72 port, Run Time Hardware Key USB	NT/2000	See Boards Tab
CTADE96RTUSB	Version 8, 96 port, Run Time Hardware Key USB	NT/2000	See Boards Tab
CTADE120RTUSB	Version 8, 120 port, Run Time Hardware Key USB	NT/2000	See Boards Tab
CTADE128RTUSB	Version 8, 128 port, Run Time Hardware Key USB	NT/2000	See Boards Tab
CTADE192RTUSB	Version 8, 192 port, Run Time Hardware Key USB	NT/2000	See Boards Tab
CTADE240RTUSB	Version 8, 240 port, Run Time Hardware Key USB	NT/2000	See Boards Tab
CTADE256RTUSB	Version 8, 256 port, Run Time Hardware Key USB	NT/2000	See Boards Tab
CTADE72RT	Version 8.2, 72 port, Run Time Hardware Key	NT/2000	See Boards Tab
CSV7ANALOGDEV	CallSuite, Analog Version 7.0	NT/2000	See Boards Tab
CSV7DIGITALDEV	CallSuite, Digital Version 7.0	NT/2000	See Boards Tab
CTADEV8RTPTLIC	Runtime Licenses Per Port	NT/2000	See Boards Tab

Item Market Name	Description	O/S
<b>CT Connect™ Software</b>		
CTCLOWNTKIT	Version 5, Low End	NT/2000
CTCFULLNTKIT	Version 5, Full	NT/2000
CTCESDKSUBSRV	Enhanced Software Development Kit	NT/2000
CTCENTRNTKIT50	Version 5, Enterprise	NT/2000
CTCASPFULLKIT	Version 3, For Aspect*, Full	NT/2000
CTCCMPCALFKIT	Version 3, For CompuCall*, Full	NT/2000
CTCMONNTKIT	Version 5, Monitor	NT/2000
CTCMIDNTKIT	Version 5, Mid Range	NT/2000
CTCFULLSUNKIT	Version 5, Full	Solaris
CTCPRODUPDNT	Version 5, Update	NT/2000
CTCCIMUNLDVKIT	Version 3, Call Information Manager, Single Site, Unlimited Devices	NT/2000
CTCHICOM	Version 3.01, Suite for HICOM 150	NT/2000
CTCOMPLV30MONNT	Version 3, For CompuCall, Monitor	NT/2000
CTCASPTMONKIT	Version 3, For Aspect, Monitor	NT/2000
CTCCRMGR	Call Routing Manager	NT/2000
CTCCIM25KIT	Version 3, Call Information Manger, Single Site, 25 Devices	NT/2000
CSTASERVINT	CSTA Switch Simulator	NT/2000

Current as of System Release 5.1.1 for Windows NT\*, Windows 2000\*, and Linux\* operating systems.

Item Market Name	Description	O/S
<b>CT Media™ Software</b>		
CTMEDIAV21W2K	Software Development Kit for Windows 2000	NT/2000
CTMEDIAV21DCSET	Software Development Kit for Windows 2000, Documentation Set	NT/2000
CTMED21023PORSE	Server Edition, 1023 Ports	NT/2000
CTMD21384PTSE	Server Edition, 384 Ports	NT/2000
CTMED21120PTSE	Server Edition, 120 Ports	NT/2000
CTMEDIA2116PTSE	Server Edition, 16 Ports	NT/2000
CTMED21ENTERPR	Enterprise Edition	NT/2000
CTMPCISTKTPRO	PCI Starter Kit, includes training and support	NT/2000

Item Market Name	Description
<b>Software Development Kit and Run-Time Software</b>	
SYSREL52DOS	C API, Drivers
SYSREL51LINUX	C API, Drivers, Configuration Manager
SYSREL51WIN	C API, Drivers, Configuration Manager
SYSTEL301W95	C API, Drivers
SYSTEM RELEASE 3.0	C API, Drivers
SYSREL20UNIX	C API, Drivers

Item Market Name	Description	Notes
<b>SS7 Septel ISA Protocols</b>		
SS7SBISAMTP	ISA MTP	See Boards Tab
SS7SBISAIUSP	ISA ISUP64+MTP	See Boards Tab
SS7SBISAIUSPL	ISA ISUP1024+MTP	See Boards Tab
SS7SBISATUP	ISA TUP64+MTP	See Boards Tab
SS7SBISATUPL	ISA TUP1024+MTP	See Boards Tab
SS7SBISANUP	ISA NUP64+MTP	See Boards Tab
SS7SBISANUPL	ISA NUP1024+MTP	See Boards Tab
SS7SBISASCCPCL	ISA SCCP-CL+MTP	See Boards Tab
SS7SBISASCCPCO	ISA SCCP-CO+MTP	See Boards Tab
SS7SBISATCAP	ISA TCAP+SCCP-CL+MTP	See Boards Tab
SS7SBISAMAP	ISA MAP+TCAP+SCCP-CL+MTP	See Boards Tab

Current as of System Release 5.1.1 for Windows NT\*, Windows 2000\*, and Linux\* operating systems.

Item Market Name	Description	Notes
<b>SS7 Septel ISA Protocols (continued)</b>		
SS7SBISAIS41	ISA IS41+TCAP+SCCP-CL+MTP	See Boards Tab
SS7SBISAISTC	ISA ISUP+TCAP+SCCP-CL+MTP	See Boards Tab
SS7SBISAMONITOR	ISA Monitor	See Boards Tab
<b>SS7 Septel PCI and CompactPCI Protocols</b>		
SS7SBPCIMTP2	MTP2	See Boards Tab
SS7SBPCIMTP	MTP	See Boards Tab
SS7SBPCIISUP	ISUP256+MTP	See Boards Tab
SS7SBPCIISUPL	ISUP4096+MTP	See Boards Tab
SS7SBPCITUP	TUP256+MTP	See Boards Tab
SS7SBPCITUPL	TUP4096+MTP	See Boards Tab
SS7SBPCINUP	NUP256+MTP	See Boards Tab
SS7SBPCINUPL	NUP4096+MTP	See Boards Tab
SS7SBPCISCCPCL	SCCP-CL+MTP	See Boards Tab
SS7SBPCISCCPCO	SCCP-CO+MTP	See Boards Tab
SS7SBPCITCAP	TCAP+SCCP-CL+MTP	See Boards Tab
SS7SBPCIMAP	MAP+TCAP+SCCP-CL+MTP	See Boards Tab
SS7SBPCIIS41	IS41+TCAP+SCCP-CL+MTP	See Boards Tab
SS7SBPCIISTC	ISUP+TCAP+SCCP-CL+MTP	See Boards Tab
SS7SBPCIMONITOR	Monitor	See Boards Tab
<b>SS7 Signaling Interface Unit (SIU) 131 and 231 Protocols</b>		
SS7SBS7L42SIU	SIU TUP (China) 64 Ports	See Platforms Tab
SS7SBS7L43SIU	SIU ISUP	See Platforms Tab
SS7SBS7L44SIU	SIU SCCP (Connectionless)	See Platforms Tab
SS7SBS7L51SIU	SIU TCAP	Requires SCCP Connectionless, See Platforms Tab
SS7SBS7L41SIU	SIU BT NUP (UK TUP)	See Platforms Tab
SS7SBS7L45SIU	SIU SCCP (Connectionless and Connection-Oriented)	See Platforms Tab
SS7SBS7L61SIU	SIU MAP	Requires TCAP and SCCP, See Platforms Tab
SS7SBS7L62SIU	SIU IS-41	Requires TCAP and SCCP, See Platforms Tab
SS7SBS7L63SIU	SIU INAP	Requires TCAP and SCCP, See Platforms Tab



Item Market Name	Description	Notes
<b>SS7 Digital Signaling Converter (DSC) 110 and 210 Protocols</b>		
ASCDPN1	DSC DPNSS	See Platforms Tab
SS7SBS7L41ASC	DSC210 BTNUP User Part	See Platforms Tab
SS7SBS7L42ASC	DSC210 TUP User Part	See Platforms Tab
SS7SBS7L43ASC	DSC210 ISUP User Part	See Platforms Tab
ASCRDC1	DSC210 Remote Data Center Option	See Platforms Tab
ASCCLI1	DSC210 CLI Auth Option	See Platforms Tab
ASCNTR1	DSC210 Number Trans Option	See Platforms Tab
ASCISC1	DSC210 ISC Option	See Platforms Tab
<b>SS7 Host Based Software</b>		
SS7SBS7L41SCO	Host NUP SCO Unix	See Boards Tab
SS7SBS7L41QNX	Host NUP QNX	See Boards Tab
SS7SBS7L41WNT	Host NUP Windows NT	See Boards Tab
SS7SBS7L42SCO	Host TUP SCO Unix	See Boards Tab
SS7SBS7L42QNX	Host TUP QNX	See Boards Tab
SS7SBS7L42WNT	Host TUP Windows NT	See Boards Tab
SS7SBS7L43SCO	Host ISUP SCO Unix	See Boards Tab
SS7SBS7L43QNX	Host ISUP QNX	See Boards Tab
SS7SBS7L43WNT	Host ISUP Windows NT	See Boards Tab
SS7SBS7L44SCO	Host SCCP Connectionless SCO Unix	See Boards Tab
SS7SBS7L44QNX	Host SCCP Connectionless QNX	See Boards Tab
SS7SBS7L45SCO	Host SCCP CO & CL SCO UNIX	See Boards Tab
SS7SBS7L45QNX	Host SCCP Connection-Oriented QNX	See Boards Tab
SS7SBS7L45WNT	Host SCCP CO & CL Windows	See Boards Tab
SS7SBS7L51SCO	Host TCAP SCO Unix	See Boards Tab
SS7SBS7L51QNX	Host TCAP QNX	See Boards Tab
SS7SBS7L51WNT	Host TCAP Windows NT	See Boards Tab
SS7SBS7L44SOL	Host SCCP Connectionless Solaris	See Boards Tab
SS7SBS7L44LNX	Host SCCP Connectionless Linux	See Boards Tab
SS7SBS7L44WNT	Host SCCP Connectionless Windows NT	See Boards Tab
SS7SBS7L61QNX	Host GSM-MAP QNX	See Boards Tab
SS7SBS7L62QNX	Host IS41-MAP QNX	See Boards Tab

Current as of System Release 5.1.1 for Windows NT\*, Windows 2000\*, and Linux\* operating systems.

Item Market Name	Name/Description	Notes
<b>SS7 Host Based Software (continued)</b>		
SS7SBS7L63QNX	Host INAP, QNX	See Boards Tab
SS7SBS7L41LNX	Host NUP, Linux	See Boards Tab
SS7SBS7L41SOL	Host NUP, Solaris	See Boards Tab
SS7SBS7L43LNX	Host ISUP, Linux	See Boards Tab
SS7SBS7L43SOL	Host ISUP, Solaris	See Boards Tab
SS7SBS7L42LNX	Host TUP, Linux	See Boards Tab
SS7SBS7L42SOL	Host TUP, Solaris	See Boards Tab
SS7SBS7L45LNX	Host SCCP Connection-Oriented, Linux	See Boards Tab
SS7SBS7L45SOL	Host SCCP Connection-Oriented, Solaris	See Boards Tab
SS7SBS7L51LNX	Host TCAP, Linux	See Boards Tab
SS7SBS7L51SOL	Host TCAP, Solaris	See Boards Tab
SS7SBS7L61SCO	Host GSM-MAP, SCO Unix	See Boards Tab
SS7SBS7L61WNT	Host GSM-MAP, WindowsNT	See Boards Tab
SS7SBS7L61LNX	Host GSM-MAP, Linux	See Boards Tab
SS7SBS7L61SOL	Host GSM-MAP, Solaris	See Boards Tab
SS7SBS7L62SCO	Host IS41-MAP, SCO Unix	See Boards Tab
SS7SBS7L62WNT	Host IS41-MAP, Windows NT	See Boards Tab
SS7SBS7L62LNX	Host IS41-MAP, Linux	See Boards Tab
SS7SBS7L62SOL	Host IS41-MAP, Solaris	See Boards Tab
SS7SBS7L63SCO	Host INAP, SCO	See Boards Tab
SS7SBS7L63WNT	Host INAP, Windows NT	See Boards Tab
SS7SBS7L63LNX	Host INAP, Linux	See Boards Tab
SS7SBS7L63SOL	Host INAP, Solaris	See Boards Tab
SS7SBS7L33QNX	Host MTP3, QNX	See Boards Tab
SS7SBS7L33SCO	Host MTP3, SCO	See Boards Tab
SS7SBS7L33WNT	Host MTP3, Windows	See Boards Tab
SS7SBS7L33LNX	Host MTP3, Linux	See Boards Tab
SS7SBS7L33SOL	Host MTP3, Solaris	See Boards Tab

Item Market Name	Description	Notes
<b>SS7 Septel ISA Development Packages</b>		
SS7SBDREV2XSP	ISA SDK for SCO Unix	See Boards and Platforms Tabs
SS7SBDREV3XSP	ISA SDK for QNX	See Boards and Platforms Tabs
SS7SBDREV4XSP	ISA SDK for Windows NT 4.0	See Boards and Platforms Tabs
SS7SBDREV5XSP	ISA SDK for Linux	See Boards and Platforms Tabs
<b>SS7 Septel PCI and CompactPCI Development Packages</b>		
SS7CPCISDKWINTN	cPCI SDK for Windows NT 4.0	See Boards and Platforms Tabs
SS7SBDREV5HSP	cPCI SDK for Linux	See Boards and Platforms Tabs
SS7SBDREV6HSP	cPCI SDK for Solaris Sparc	See Boards and Platforms Tabs
SS7SBDREV3HSP	cPCI SDK for QNX	See Boards and Platforms Tabs
<b>SS7 Signaling Interface Unit (SIU) 131 and 231 Development Packages</b>		
SS7SBDREV2SIU	SIU SDK for SCO Unix	See Boards and Platforms Tabs
SS7SBDREV3SIU	SIU SDK for QNX	See Boards and Platforms Tabs
SS7SBDREV4SIU	SIU SDK for Windows	See Boards and Platforms Tabs
SS7SBDREV5SIU	SIU SDK for Linux	See Boards and Platforms Tabs
SS7SBDREV4SIU	SIU SDK for Windows 2000	See Boards and Platforms Tabs
SS7SBDREV6SIU	SIU SDK FOR Solaris Sparc	See Boards and Platforms Tabs
SS7SBDREV7SIU	SIU SDK FOR VxWorks	See Boards and Platforms Tabs



Item Market Name	Product	Description	Resource Bus	Connection
<b>PBX Integration Accessories</b>				
D82UCABLE	D/82JCT-U Cable	2 foot cable to connect D/82JCT-U to punch down block	N/A	NA
<b>Station Interface Accessories</b>				
MSIBLPOWER	MSI/BL Power Supply	External power supply for MSI boards	N/A	NA
SI80PCIGBL	SI/80-PCI-Global	8 resources, daughterboard upgrade for MSI	N/A	NA
<b>Cables</b>				
4DROPPEBSCBUS	4 drop SCbus or PEB	4 drop SCbus or PEB	SCbus	26 pin
8DROPPEBSCBUS	8 drop SCbus or PEB	8 drop SCbus or PEB	SCbus	26 pin
12DROPPEBSCBUS	12 drop SCbus or PEB	12 drop SCbus or PEB	SCbus	26 pin
16DROPPEBSCBUS	16 drop SCbus or PEB	16 drop SCbus or PEB	SCbus	26 pin
CBLCTB68C4DROP	4 drop CT Bus	4 drop CT Bus	CT Bus	68 pin
CBLCTB68C8DROP	8 drop CT Bus	8 drop CT Bus	CT Bus	68 pin
CBLCTB68C12DROP	12 drop CT Bus	12 drop CT Bus	CT Bus	68 pin
CBLCTB68C16DROP	16 drop CT Bus	16 drop CT Bus	CT Bus	68 pin
CBLD120PCI25PP	D/120 Adapter Cable	Adapter cable, 1 per board required	N/A	N/A
CLD41EUK	UK Telco Cable	UK telco cable for D/41ESC	N/A	N/A
BOB25POSJ11	Breakout Box	Breakout box	N/A	N/A
CTBUSTOSCBUSADP	CT Bus Device to SCbus Adapter	CT Bus device to SCbus adapter. H.100 or SCbus cable not included and may be required.	N/A	NA
FM10GERMANY	FM 10, Filter Module - Germany	German FM 10 filter module	N/A	NA
FM10SWISS	FM 10 - Switzerland	Swiss FM 10 filter module	N/A	NA
<b>Station Adapter</b>				
SA160CONNKIT	SA-160 Adapter	16 resources, includes cable and mini patch panel	N/A	16-RJ11
SA240CONNKIT	SA-240 Adapter	24 resources, includes cable and mini patch panel	N/A	24-RJ21
LSI160TOLSI1459	LS/1459 Kit	24 resources, connects mini patch panel and board on systems that connect directly to PSTN.	N/A	24-RJ11

Current as of System Release 5.1.1 for Windows NT\*, Windows 2000\*, and Linux\* operating systems.

Item Market Name	Description	Notes
<b>Spare Parts for Septel Signaling Interface Unit (SIU)</b>		
SIUKE08 SS7SIUKE30	SIU Spares CPU Card	See Boards and Platforms Tabs
SIUPMC1	SIU Monitor Card	See Boards and Platforms Tabs
SIUKE03	SIU Floppy Disk Drive	See Boards and Platforms Tabs
SIUKE25	SIU Solid State Disk	See Boards and Platforms Tabs
SIUKE09	SIU131 Ethernet Card	See Boards and Platforms Tabs
SIUKE40	SIU231 Ethernet Card	See Boards and Platforms Tabs
SIUKE05	SIU231 Spare Fan	See Boards and Platforms Tabs
SIUKE15	SIU131 Spare Fan	See Boards and Platforms Tabs
SIUKE16	SIU131 AC PSU	See Boards and Platforms Tabs
SIUKE17	SIU131 DC PSU	See Boards and Platforms Tabs
DKL26	DKL26-SIU Dual V.11(V.35)-Dual DB15	See Boards and Platforms Tabs
DKL25	DKL25 Back-Back V.11(V.35) Cable	See Boards and Platforms Tabs
DKL16	DKL16 RJ45 Back-Back Crossover Cable	See Boards and Platforms Tabs
<b>Spare Parts for Digital Signaling Converter (DSC) 110 and Digital Signaling Converter (DSC) 210</b>		
DSCKE23	DSC110 Spare PCM Ribbon Cable	See Boards and Platforms Tabs
DSCKE05	DSC110/210 Spare DSC210 Fan	See Boards and Platforms Tabs
DSCKE22	DSC210 Spare PCM Ribbon Cable	See Boards and Platforms Tabs
DSCKE02	DSC210 Spare 48V DC PSU	See Boards and Platforms Tabs
DSCKE30	DSC110/210 Spare CPU Card	See Boards and Platforms Tabs
DSCKE38	DSC110/210 Spare Solid State Disk	See Boards and Platforms Tabs
DSCPMC1	DSC110/210 Spare Monitor Card	See Boards and Platforms Tabs
DSCKE03	DSC03	See Boards and Platforms Tabs
DSCKE09	DSC09	See Boards and Platforms Tabs
DSCKE15	DSC15	See Boards and Platforms Tabs
DSCKE16	DSC16	See Boards and Platforms Tabs
DSCKE17	DSC17	See Boards and Platforms Tabs
DSCKE37	DSC37	See Boards and Platforms Tabs
DSCKE44	DSC44	See Boards and Platforms Tabs

Item Market Name	Description	Notes
<b>Technical Support</b>		
DSVTS24BY7YEAR	7x24 Yearly Contract	
DSVTSELITE	Elite Support Plan	Signed contract required
DSVTSPREMIUM	Premium Support Plan	Signed contract required
DSVTSTMPREM	Premium Support Plan for CT Media Software	Signed contract required
DSVTSTMELITE	Elite Support Plan for CT Media Software	Signed contract required
DSVTSTESTBED	In Lab Test Bed	Prior approval required
DSVTSPREMSEL	Premium Select for ISV Plan	Signed contract required
DSVTSPREMSELCTM	Premium Select with CT Media Software for ISV Plan	Signed contract required
PERINCDT10PKPT2	Per Incident Support - 10 Pack	CBA will walk you through order process
PERINCDT5PKPT2	Per Incident Support - 5 Pack	CBA will walk you through order process
DSVTSTCTPREM	Premium Support Plan for CT Connect Software	Signed contract required

Item Market Name	Description	
------------------	-------------	--

<b>Educational</b>		
DSVESCUSTOM	Custom Training Class	Class
DSVESCTMAPPDEV	CT Media Application Development Training	Class
DSVESCTMADMIN	CT Media Administration Training	Class
DSVESR4DEV	R4 Developer Training	Class
DSVESIPLINKAPP	IP Link Application Development	Class
DSVESCTMDEVONST	CT Media Developer Training	At customer site
DSVESCTMADMNST	CT Media Administration Training	At customer site
DSVESCTMAPADONS	CT Media Administration and Application Development Training	At customer site
DSVESR4DEVONSIT	R4 Developer Training	At customer site
DSVESPCHWKVPP	Voice Portal Platform with SpeechWorks* Training	Class
DSVESNUANCEVPP	Voice Portal Platform with Nuance* Training	Class
DSVESHWSOLONSIT	Converged Communications Hardware and Solutions Training	At customer site
DSVESHWSOLCBT	Converged Communications Hardware and Solutions Training	Computer-based training
DSVESCCTRAIN	Converged Communications Hardware and Solutions Training	Class
DSVESCCTINST	CT Connect Installation and Configuration Training	Class
DSVESCCTPRGM	CT Connect Programming Training	Class
DSVESICPADMIN	Intel® Converged Communications Platform Administration and Configuration Training	Class

Current as of System Release 5.1.1 for Windows NT\*, Windows 2000\*, and Linux\* operating systems.

Item Market Name	Name/Description	Notes
<b>Educational (continued)</b>		
DSVESPXBIPMGCBT	PBX-IP Media Gateway	Computer-based training
DSVESCTADEILT	CT ADE Programming Training	Class
DSVESS7DEVILT	SS7 Developer Training	Class
DSVEEXPENSE	Educational Services Expenses	
DSVESCTADECSILT	CT Application Development Environment Programming Training	Class
<b>Consulting</b>		
Contact your Intel sales representative for more information.	Project Discovery Workshop	
	CT Media JumpStart Services	
	CT Media RDK JumpStart Services	
	CT Connect ESDK JumpStart Services	
	CT Connect Visual Basic JumpStart Services	
	CT Connect Call Information Manager JumpStart Services	
	Screen Pop JumpStart Services	ESDK, Call Information Manager
	Screen Pop JumpStart Services	Visual Basic, Call Information Manager
	IVR Jumpstart	CT Connect, Call Information Manager
	H.323 Gatekeeper JumpStart Services	CT Connect
	CT Application Development Environment JumpStart	
	Intel® Internet Phone JumpStart Services	
	CT Connect Site Implementation Service	
	CT Connect Call Information Manager Site Implementation Services	
	CT Connect and Call Information Manager Site Implementation Services	
	CT Connect Remote Implementation Support	
	CT Connect and Call Information Manager Remote Implementation Services	
	CT Connect Lab Services	
	Intel® Converged Communications Platform (ICCP) JumpStart Services	
	SS7 ISUP JumpStart Services	
	InSwitch Services	
	Custom Services	
	Travel and Expense (where applicable)	



## Abbreviations Used In This Guide

2000 = Windows 2000\* operating system

cPCI = CompactPCI

CSP = Continuous Speech Processing

FF = Form Factor

NT = Windows\* NT operating system

O/S = Operating System

Solaris = Solaris operating system

Information in this document is provided in connection with Intel® products. No license, express or implied, by estoppel or otherwise, to any intellectual property rights is granted by this document. Except as provided in Intel's Terms and Conditions of Sale for such products, Intel assumes no liability whatsoever, and Intel disclaims any express or implied warranty, relating to sale and/or use of Intel® products including liability or warranties relating to fitness for a particular purpose, merchantability, or infringement of any patent, copyright or other intellectual property right. Intel® products are not intended for use in medical, life saving, or life sustaining applications. Intel may make changes to specifications and product descriptions at any time, without notice.

1515 Route Ten  
Parsippany, NJ 07054  
Phone: 1-973-993-3000  
Fax: 1-973-993-3093

#### **For more information**

To learn more, visit our site on the  
World Wide Web at [www.intel.com](http://www.intel.com)

Intel, NetStructure, NetMerge, CT Connect, CT Media, and the Intel logo are  
trademarks or registered trademarks of  
Intel Corporation or its subsidiaries in the United States and other countries.

\*Other names and brands may be claimed as the property of others.

Printed in the USA  
Copyright © 2002 Intel Corporation  
All rights reserved.

00-8010-001 05/02

 Printed on recycled paper.

**intel**®