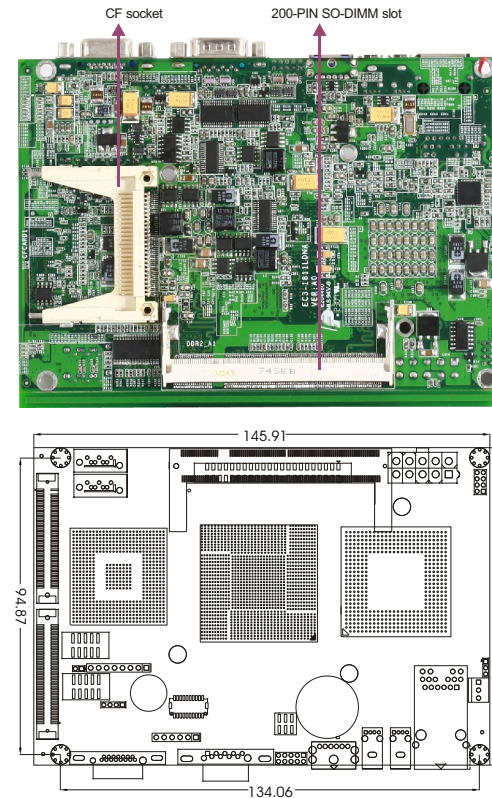
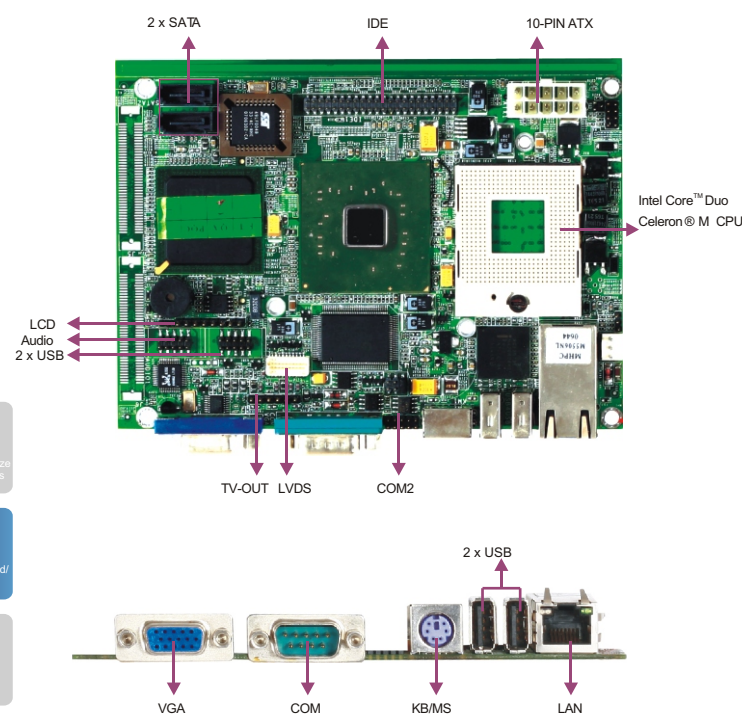


# EC3-1811LDNA

3.5" Dual-Core Processor with LVDS/VGA/CF/LAN/Audio



## Features

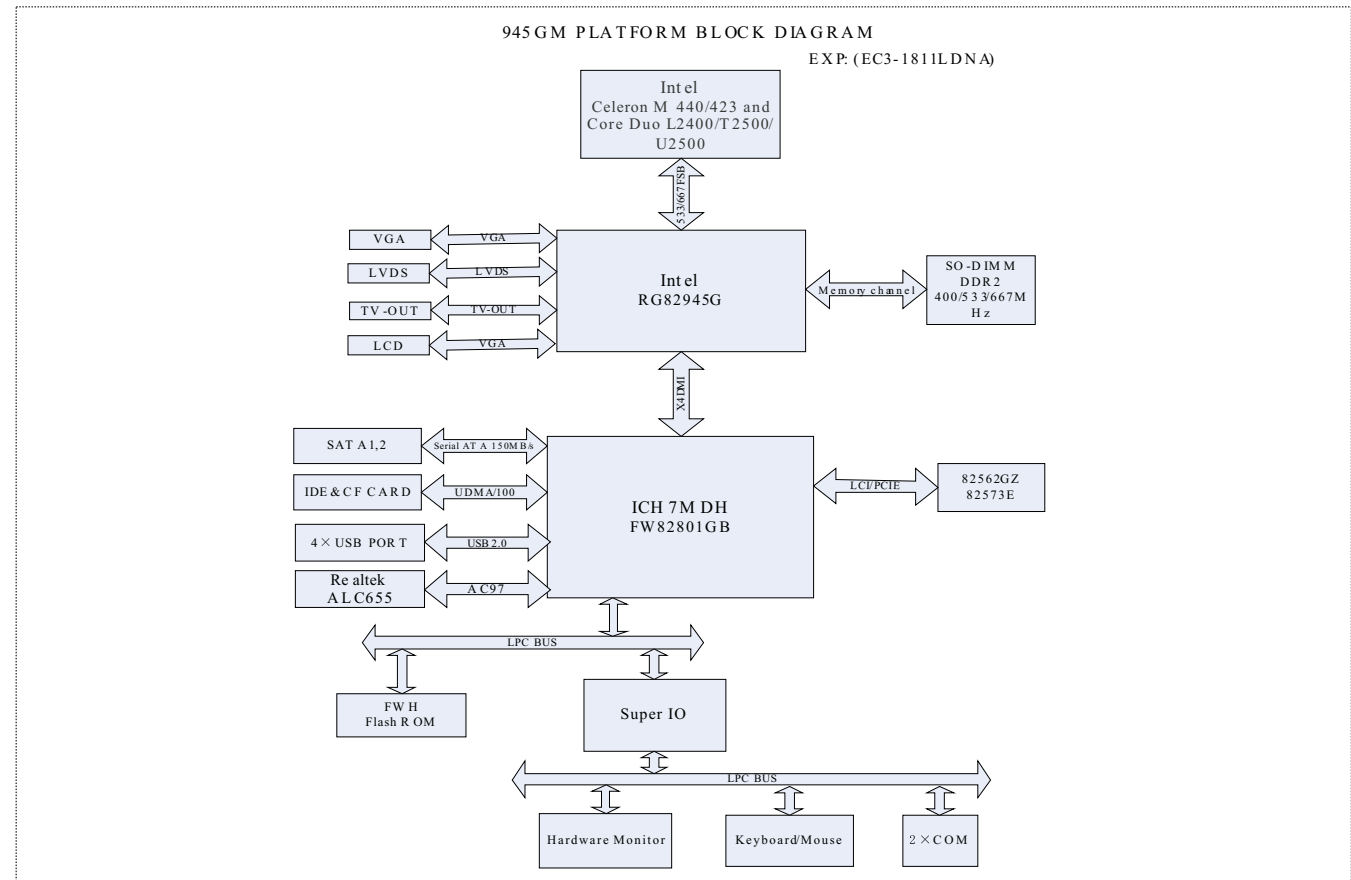
- Supports Intel® Celeron® M 420/440 and Core™ Duo L2400/T2500/U2500 series CPU
- Supports up to SO-DIMM 2GB DDR2 memory
- One 10/100/1000Mbps Ethernet controller
- Supports VGA18/24-bit TFT LVDS/TV-OUT independent dual display
- Supports 4 x USB2.0, 2 x COM, 2 x SATA, 1 x IDE, 1 x VGA, 1 x LCD, 1 x LVDS, 1 x TV-OUT, 1 x CF

## Specifications

System	
Processor	Supports Intel® Celeron® M 420/440 and Core™ Duo L2400/T2500/U2500 series 533/667 FSB CPU
Chipset	Mobile Intel® 945GME+ICH7M
Memory	1 x 200-pin SO-DIMM slot, supporting up to 2GB of DDR2 533/667 memory
Hardware Monitor	Monitors system status, voltage, temperature and fan speed, etc.
Watchdog Timer	Supports 1~255 sec./min. timer system reset/interrupt, setup by software
Expansion Interface	EVOG multi-functional expansion bus
Storage	
IDE	1 x Ultra ATA33/66/100 interface
Serial ATA	2 x Serial ATA 150MB/s interface
Floppy	N/A
CF	1 x CompactFlash Socket Type I/II
DOC/DOM	N/A
I/O Interface	
USB	4 x USB2.0
Serial Port	1 x RS-232/422/485, 1 x RS-232, available interfaces of 1 x DB9 and 1 x 10-pin header onboard
Parallel Port	N/A
IrDA	N/A
GPIO	N/A
Audio	AC'97, onboard Realtek ALC655, available interfaces of Speaker-out, Line-in and Mic-in

Display	
Chipset	Intel® 945GME integrated graphics acceleration controller
Memory	Up to 244MB of shared memory
Resolution	VGA mode up to 2048 x 1536@75Hz LVDS mode up to 1600 x 1200@18/24bit
Dual Display	Supports dual independent display CRT+TV-out/LVDS+TV-out
Ethernet	
Chipset	Intel® 82573E
Speed	10/100M/1000Mbps
Connector	1 x RJ 45
Mechanical and Environmental	
Dimensions	146mm x 102mm
Operating Temperature	-25°C~70°C
Storage Temperature	-40°C~85°C
Operating Humidity	5%-90%, non-condensing
Power	
Power Supply	Supports AT/ATX power supply
Power Consumption	Typical 16W (Intel Celeron-M 400/423MHz CPU, 2GB memory)
Operating System	
Windows OS	Windows 2000/ Windows XP
Embedded OS	Linux/XP Embedded/WinCE/Vx Works

## Board Diagram



## Available Accessories

Part Number	Name	Description	Qty.
—	Driver CD/Protective film/RoHS	EC3-1811LDNA	1
—	Setup Guide/RoHS	AMI/BIOS Setup Guide (for CORE8)	1
—	User's Manual/RoHS	EC3-1811LDNA	1
2330-000011	Jumper/RoHS	2.0mm pitch	2
2360-005031	Y-cable for keyboard and mouse/RoHS	One minDIN port to two PS/2 ports, length: 250mm/RoHS	1
2360-009091	HDD flat cable/RoHS	44 Pin (2.0) HDD cable, length: 400	1
2360-011211	Audio cable with bracket/RoHS	Three audio jacks to one 2x5 Pin connector (2.0mm pitch), length: 300mm/RoHS	1
2360-011231	Serial port cable/RoHS	DB9 connector to 2x5 Pin connector (2.0mm pitch), length: 300mm/RoHS	1
2360-014781	Dual USB ports with bracket/RoHS	Two USB ports to one 2x5 Pin connector (2.0mm pitch), length: 550mm/RoHS	1
2360-014891	Power cable/RoHS	One male 20 Pin (2x10) port to female 2x5 Pin connector (4.2mm pitch), length: 150mm/RoHS	1
2360-017241	Power supply output cable/RoHS	TJC10 4 Pin connector (male) to TJC16-10P 4.2 connector(female), length: 150mm	1
2360-017961	SATAHDD cable/RoHS	SATA7 Pin to SATA7 Pin with elbow connector, length: 550mm/RoHS	1
1030-100181	Motherboard (with cooler)/RoHS	EC3-1811LDNA/PGA	1

## Related Product

Item	Typical Recommendation
Power Supply	AT or ATX

## Ordering Information

Part Number	Model Number	Description
0030-002421	EC3-1811LDNA	Motherboard/RoHS
0030-002420	EC3-1811LDNA	Motherboard
0030-002440	EC3-1811LDNA/L2400	Motherboard/L2400 CPU
0030-002430	EC3-1811LDNA/M423	Motherboard/Celeron® M 423 CPU
0030-002450	EC3-1811LDNA/U2500	Motherboard/U2500 CPU
0030-007320	EC3-1811LDNA/Conformal coating	Motherboard/comformal coating