

# BPC-500-6250

Intel Ultra Low Voltage Celeron / Low Voltage Pentium III Box PC with CRT and Fast Ethernet.



## Features



- ★ Embedded Intel ULV Celeron / LV PIII CPU
- ★ 128MB SO-DIMM soldered on-board and one SODIMM support up to 512MB
- ★ Triple LAN ports 10/100Mbps Realtek 8100BL
- ★ Mini PCI Expansion slot
- ★ CompactFlash Type I/II
- ★ Easy accessible 2.5" HDD tray from top cover

## Specifications

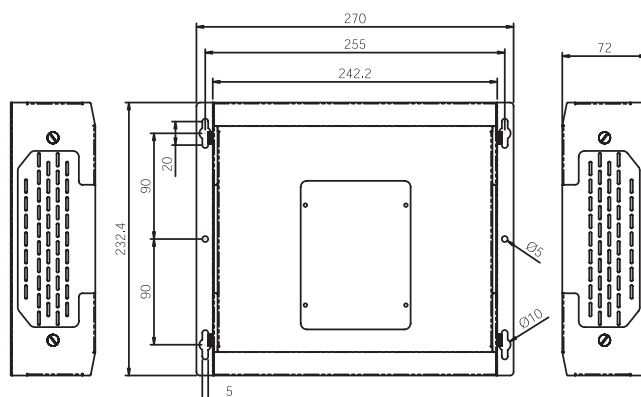
### System Board

- **CPU:** Intel Ultra Low Power Celeron 400MHz CPU(w/ 100MHzFSB and 256KB Cache)
- **System Memory:** 128MB On-Board (Optional 256MB On-Board)One 144-pin SODIMM supports up to 512MB SDRAM
- **System Chipset:** VIA VT8606 Twister-T™ NorthBridge & VIA VT82C686B super SouthBridge
- **BIOS:** Award Flash BIOS
- **Display:** UMA Savage 4 (VT8606T) AGP Video Controller with up to 32MB UMA Video RAM, supports TTL, LVDS, CRT, and TV-Out
- **Fast Ethernet:** Triple Realtek 8100BL
- **Watchdog Timer:** Timer generates RESET
- **Audio:** AC'97 v2.2 Compliant Interface
- **Flash Disk:** CompactFlash Type I/II
- **Expansion :** Mini PCI socket
- **Serial Ports:** 3 x RS232 COM Ports, 1 x RS 232C/422/485
- **Parallel Ports:** SPP, EPP, and ECP mode
- **USB:** 4 x USB Ports

### System External I/O

- **Serial Port:** 3 x RS232C COM Ports, 1 x RS 232C/422/485
- **Parallel Port:** 1 x DB-25
- **USB:** 4 x USB Ports
- **LAN:** 3 x RJ-45
- **Display:** 1 x DB-15
- **Mouse/Keyboard:** 1 x PS/2 mini DIN

### Dimension Diagram



Unit: mm

- **Driver bay:** 1 x 2.5" HDD driver bay
- **Audio:** Mic-in, Line-in, Line-out
- **Flash Disk:** CompactFlash Type I/II

### Power Adaptor

- **AC Power Input:** 85~264V / 47~63Hz 1.5A max.; 12V@ >3Am
- **DC Power Output:** V1: +5 Vdc +/- 5% @6A max. Load  
V2: +12 Vdc +/- 10% @2A max. Load, 50Watt.

### Mechanical & Environment

- **Operating Temperature:** 0 ~ 40°C
- **Storage Temperature:** -20 ~ 75°C
- **Dimension (W x H x D):** 242 x 232x 72mm (9.6" x 9.2" x 2.8" )
- **Weight:** 2.2kg (4.84 lb)
- **Mounting:** Wallmount or Desktop

### OEM Options

**CPU:** Intel ULV Celeron 650MHz, LV PIII 800MHz, or LV PIII 933MHz.

**Fast Ethernet:** Intel 82551 for 10/100 or Intel 82540 for Gigabit LAN

**System Memory:** 256MB soldered On-Board

**External I/O:** TV-Output

### Ordering Information

#### BPC-500-6250

BPC with EmCORE-i625VL3R/C400

#### PAD-SPD-050-D1

AC power adaptor 12V@2A; 5V@6A

