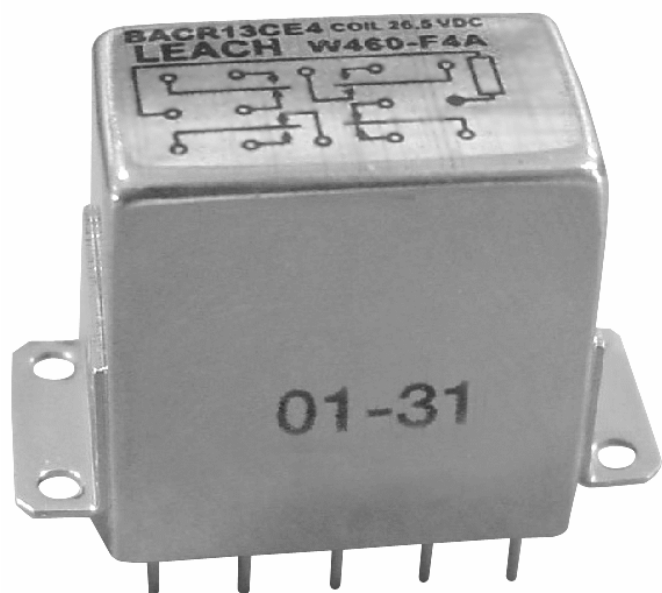


ENGINEERING DATA SHEET

WN460

RELAY - NONLATCH
4 PDT, 2 AMP



Non polarized, non latching hermetically sealed relay.

Contact arrangement **4 PDT**
Coil supply **Direct current**
Compatible with **MIL-R-39016/39**

PRINCIPLE TECHNICAL CHARACTERISTICS

Contacts rated at **2 Amp / 28Vdc**
Weight **34 grams max**
Dimensions of case **25.65mm x 15.5m x 25.4mm max**
without mounting brackets
Hermetically sealed corrosion protected metal can.

APPLICATION NOTE:

[001](#)

APPLICABLE SOCKETS:

[HRCC](#)

CONTACT ELECTRICAL CHARACTERISTICS

Minimum operating cycles	Contact rating per pole and load type	Load Current in Amps	
		@28Vdc	@115Vac/60-400Hz
100,000 cycles	Relay case grounded: resistive load inductive load (0.2H)	2	0.25
100,000 cycles		0.25	-
100,000 cycles	Relay case not grounded: resistive load inductive load (0.2H) lamp load	-	1
100,000 cycles		0.5	-
100,000 cycles		0.25	-
1,000,000 cycles	low level (50µA/50mV max)	-	-
100 cycles	resistive overload	4	-



Featuring **LEACH**® power and control solutions
www.esterline.com

AMERICAS
6900 Orangethorpe Ave.
P.O. Box 5032
Buena Park, CA 90622

Tel: (01) 714-736-7599
Fax: (01) 714-670-1145

EUROPE
2 Rue Goethe
57430 Sarralbe
France

Tel: (33) 3 87 97 31 01
Fax: (33) 3 87 97 96 86

ASIA
Units 602-603 6/F Lakeside 1
No.8 Science Park West Avenue
Phase Two, Hong Kong Science Park
Pak Shek Kok, Tai Po, N.T.
Hong Kong
Tel: (852) 2 191 3830
Fax: (852) 2 389 5803

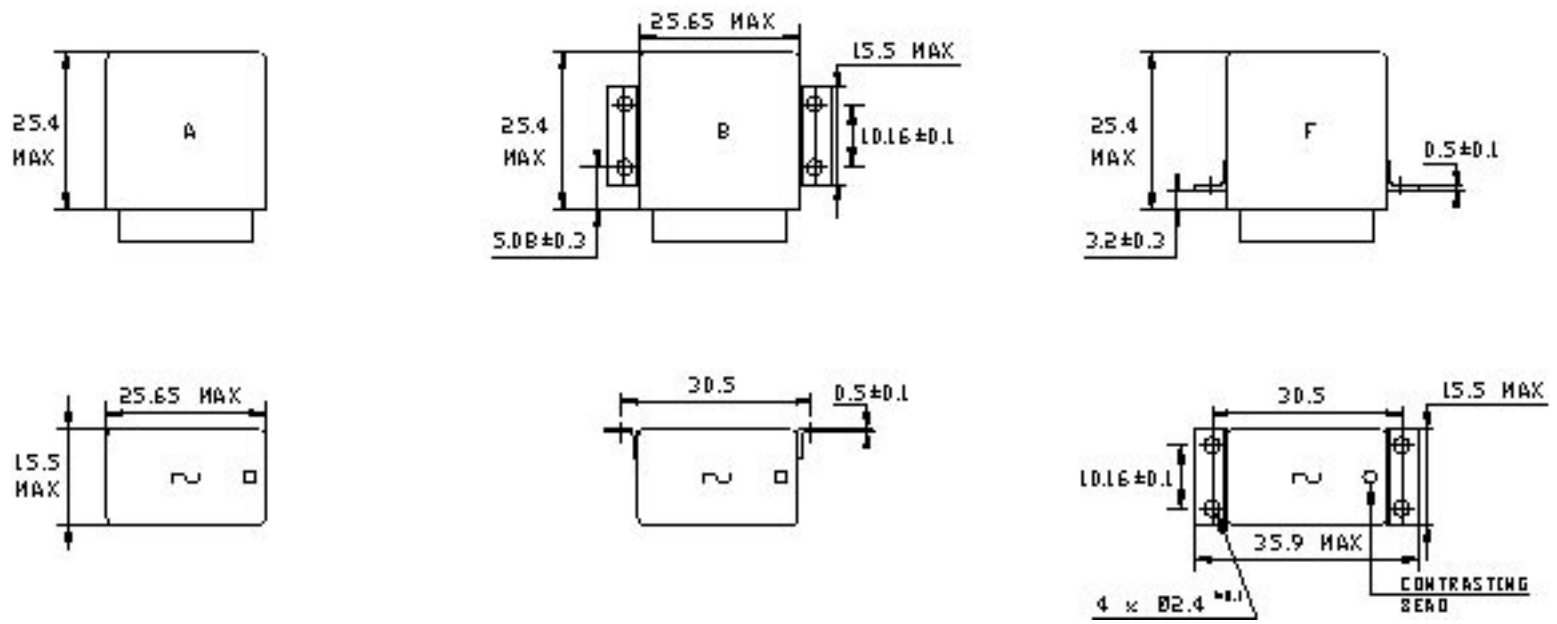
Data sheets are for initial product selection and comparison. Contact Esterline Power Systems prior to choosing a component.

COIL CHARACTERISTICS (Vdc)**WN460**

CODE	A	B	C
Nominal operating voltage	26.5	12	6
Maximum operating voltage	32	16.5	8.5
Maximum pickup voltage at +125° C	18	8.8	4.55
Guaranteed drop-out voltage at -65° C	1	0.5	0.25
Coil resistance in $\Omega \pm 10\%$ at +25° C	500	117	32

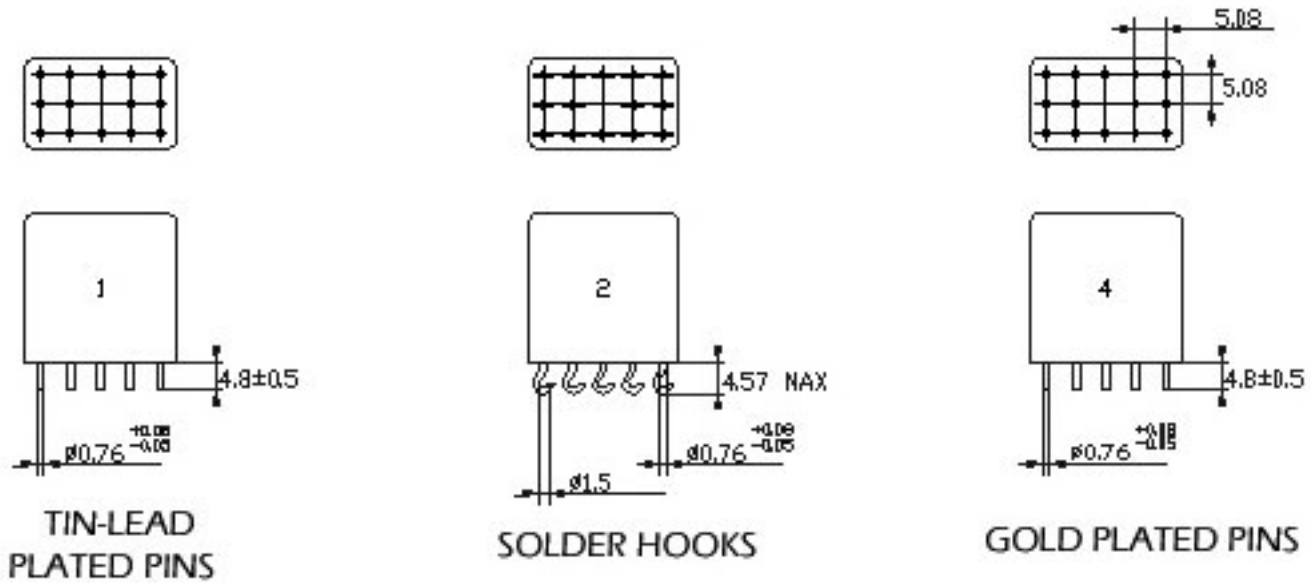
GENERAL CHARACTERISTICS

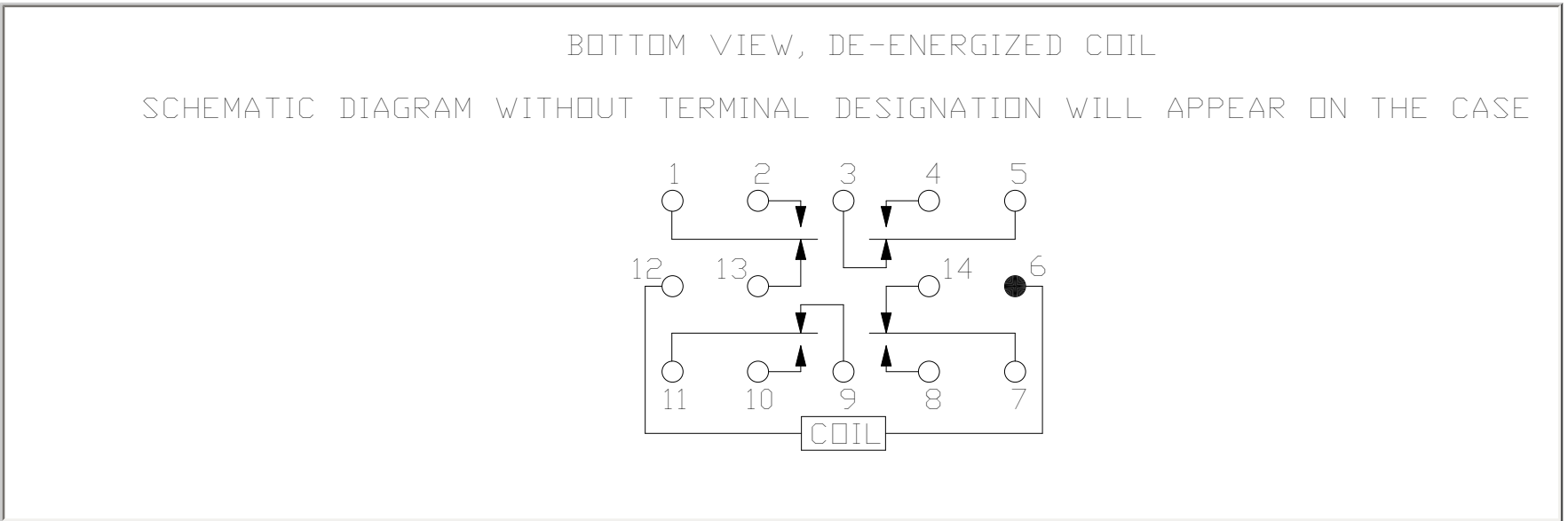
Temperature range	-65°C to +125°C
Dielectric strength at sea level -between case, frame or enclosure and coil -between open contacts -others	500 Vrms / 50 Hz 500 Vrms / 50 Hz 1000 Vrms / 50 Hz
Dielectric strength at altitude 25,000 m, all terminals to ground	350 Vrms / 50 Hz
Initial insulation resistance at 100 Vdc	>1000 M Ω
Sinusoidal vibration	30 G / 10 to 3000 Hz
Shock	50 G / 11 ms
Maximum contact opening time under vibration and shock	10 μ s
Operate time at nominal voltage	6 ms max
Release time	5 ms max
Bounce time	2 ms max
Contact resistance at nominal current -initial value -after life	50 m Ω max 100 m Ω max



Dimensions in mm
Tolerances unless otherwise specified $\pm 0.25\text{mm}$

TERMINAL TYPES





NUMBERING SYSTEM

	WN460 - *	*	*
Basic series designation _____			
1-Mounting Style (A,B,F) _____			
2-Terminal Types (1,2,4) _____			
3-Coil Voltage (A,B,C, _____)			

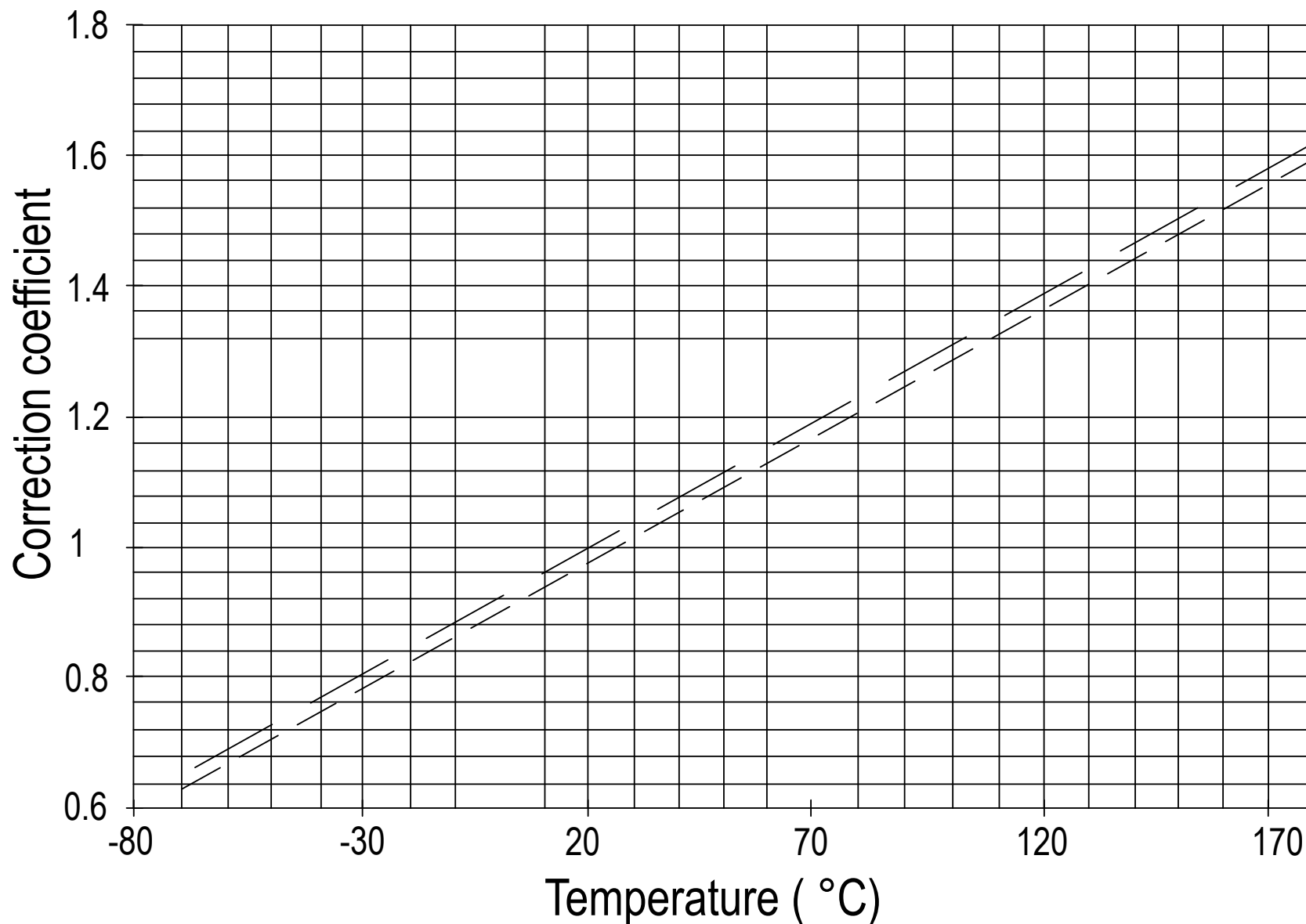
NOTES

1. Ultra sonic cleaning may adversely effect the normally closed contacts

TYPICAL CHARACTERISTICS

- Coil L/R ratio for all coil = 1.5 ms
- Coil resistance/temperature change: See application note no. 001

**CORRECTION DUE TO COIL COPPER WIRE RESISTANCE
CHANGE IN TEMPERATURE**



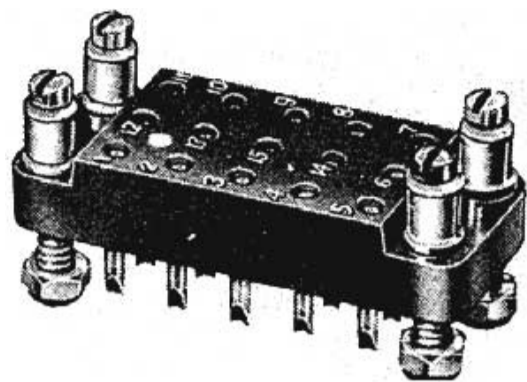
— — Nominal Resistance at 25°C

———— Nominal Resistance at 20°C

Example: Coil resistance at 25°C: 935 ohms. What is it at 125°C?

Correction coefficient on diagram is: 1.39 at 125°C. R becomes: $935 \times 1.39 = 1299$ Ohms

Correction also applies to operating voltages



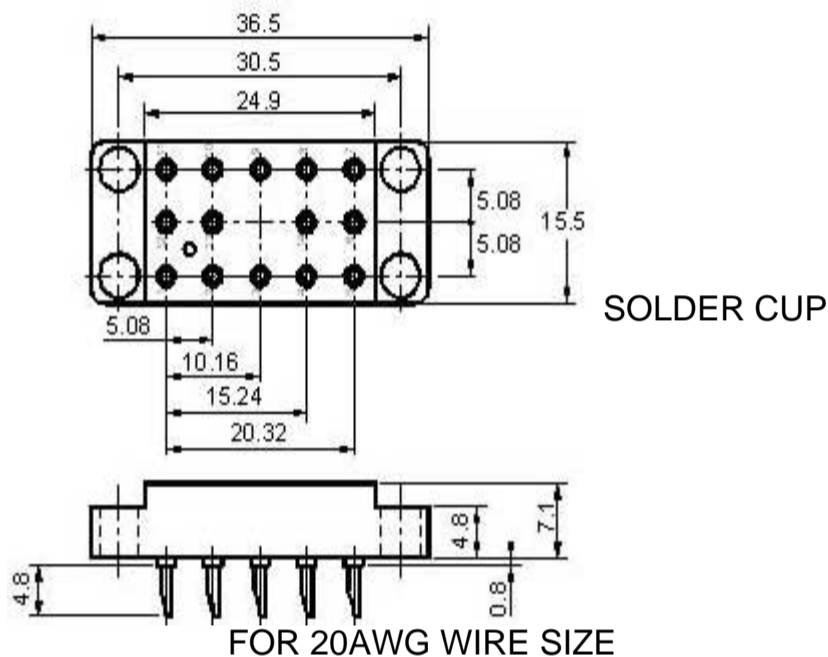
BASIC SOCKET SERIES DESIGNATION FOR:

SERIES WN460

MEETS THE REQUIREMENTS OF:

MIL-S-12883

DIMENSIONS



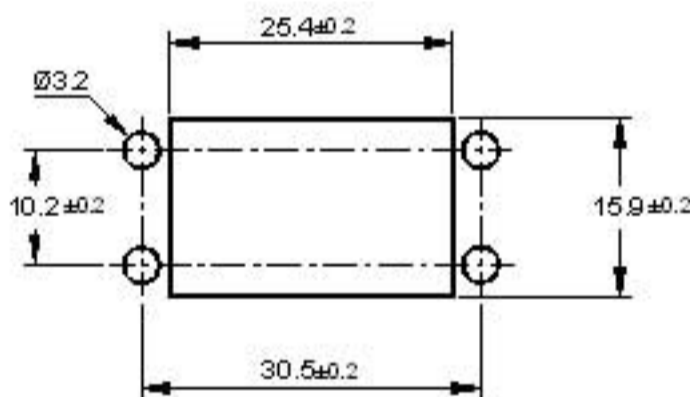
HRCC-1JV2
 BOTTOM MOUNT



HRCC-2JV2
 TOP MOUNT



PANEL THICKNESS: 1.6mm



GENERAL CHARACTERISTICS

Supplied with mounting hardware.

Temperature range	-65°C to +125°C
Weight	16 grams
Dielectric Strength at sea level	1500 Vrms / 50 Hz Minimum
Gold plated contact per MIL-G-45204	
Dallyl phthalate, glass-fiber filled per MIL-M-14	

Esterline Power Systems
 Featuring **LEACH**® power and control solutions
www.esterline.com

AMERICAS
 6900 Orangethorpe Ave.
 P.O. Box 5032
 Buena Park, CA 90622
 Tel: (01) 714-736-7599
 Fax: (01) 714-670-1145

EUROPE
 2 Rue Goethe
 57430 Sarralbe
 France
 Tel: (33) 3 87 97 31 01
 Fax: (33) 3 87 97 96 86

ASIA
 Units 602-603 6/F Lakeside 1
 No.8 Science Park West Avenue
 Phase Two, Hong Kong Science Park
 Pak Shek Kok, Tai Po, N.T.
 Hong Kong
 Tel: (852) 2 191 3830
 Fax: (852) 2 389 5803

Data sheets are for initial product selection and comparison. Contact Esterline Power Systems prior to choosing a component.