

# Tellabs® 8000 Intelligent Network Manager

A powerful element, network and service management system.

## Overview

The Tellabs® 8000 Intelligent Network Manager is a powerful element, network and service management system supporting Tellabs' mobile, optical and business solutions.

The Tellabs 8000 intelligent manager includes support for the following Tellabs solutions and product families:

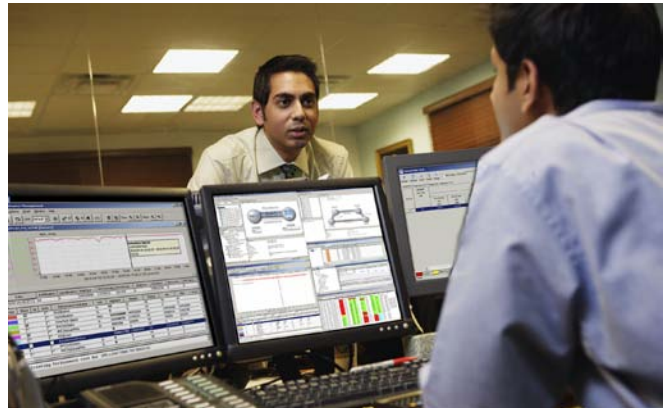
- Tellabs® Mobile Solutions
- Tellabs® Optical Solutions
- Tellabs® Business Solutions
- Tellabs® 3700 Multimedia Controller
- Tellabs® 5500 Digital Cross-Connect System
- Tellabs® 5320 L Digital Cross-Connect System
- Tellabs® 6300 Managed Transport System
- Tellabs® 7100 Optical Transport System
- Tellabs® 7300 Metro Ethernet Switching Series
- Tellabs® 8100 Managed Access System
- Tellabs® 8600 Managed Edge System
- Tellabs® 8800 Multiservice Router Series
- Tellabs® SmartCore® 9000 Series

It provides a complete network management feature set, from deep node level troubleshooting to end-to-end service management.

The Tellabs 8000 intelligent manager offers outstanding capacity, scalability and availability features.

Service providers can offer managed TDM and Ethernet services over SDH, PDH, Ethernet and DWDM networks. They can also deploy IP/VPN, Ethernet, ATM, Frame Relay, TDM and HDLC connectivity services in MPLS networks with capacities from n x 64 kbps up to 40 Gbps.

The Tellabs 8000 intelligent manager provides end-to-end management for 2G, 3G and 4G/LTE mobile transport applications, voice and data transport applications, carrier-class intranet and extranet services for corporate customers. Service providers can also manage business broadband Internet access and corporate voice services using the same management system.



Provision service up to five times faster than other systems.

## Benefits

- The Tellabs 8000 intelligent manager offers fast time-to-revenue with efficient service provisioning and quick troubleshooting capabilities.
- The management system is easy to learn and use with its advanced GUI, templates and well-defined installation instructions. The centralized database keeps the integrated system tools updated, enabling all users to see the network status in real-time.
- True end-to-end service provisioning from WDM layer up to IP/VPNs provides an easier and more efficient way to manage complex networks.
- The remote configuration tools, automated processes and templates reduce the need for site visits and the time to deliver services.
- Single, scalable management platform for multiple technologies, efficient management procedures and fast troubleshooting can produce significant cost savings.
- Regardless of the network technologies, the same management infrastructure and personnel can be used to manage the entire network.

## Key Features

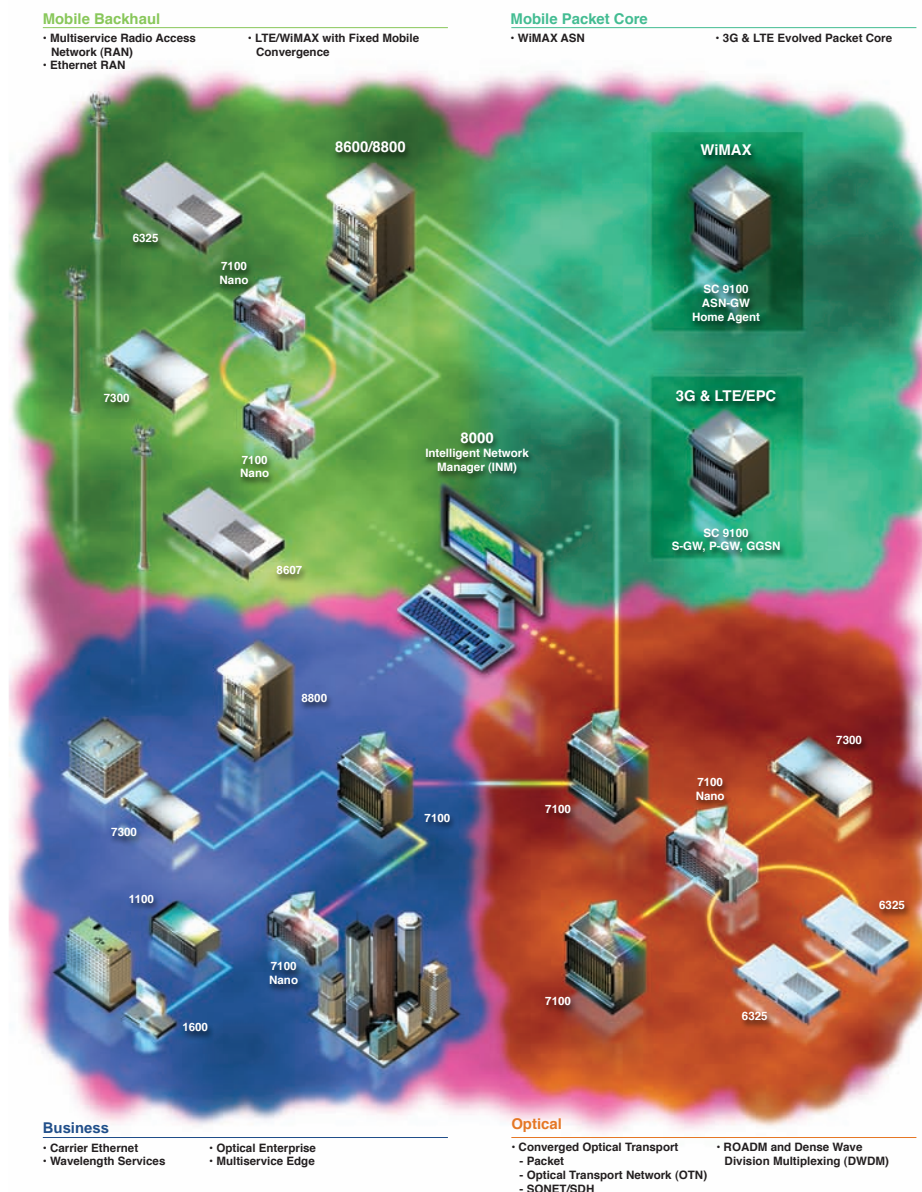
In addition to the full traditional EMS/NMS FCAPS functionality, the Tellabs 8000 intelligent manager provides advanced features to help manage networks more efficiently.

### Pre-planning capabilities

The Tellabs 8000 intelligent manager enables the network operator to pre-plan and pre-provision the network even before the equipment is installed or remotely accessible. This powerful capability enables the network operator to efficiently manage available resources.

### Node Configuration Wizards and Templates

The Tellabs 8000 intelligent manager provides powerful node configuration wizards and advanced templates to minimize the effort and time to deploy large number of nodes. This key functionality may significantly reduce common costly errors when turning on new nodes.



The Tellabs 8000 INM provides a single, overarching network management solution for multiple product families.

### Packet Loop Test

The Tellabs 8000 intelligent manager includes an easy-to-use end-to-end Packet Loop Test tool. This advanced feature allows node-to-node connectivity, throughput or QoS validation directly from the GUI. The Packet Loop Test tool greatly simplifies node turn-up validation and is extremely useful for troubleshooting network issues.

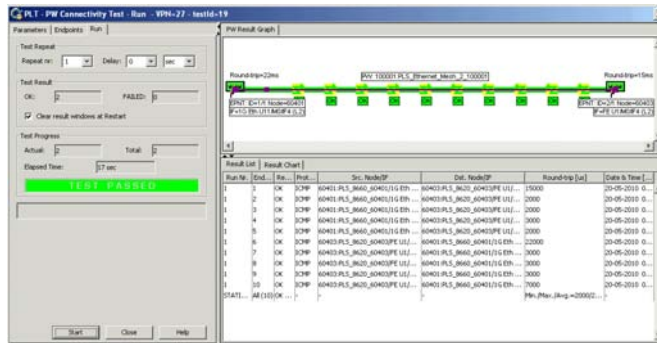


Figure 1. Packet Loop Test

### Pseudowire Wizards

The Tellabs 8000 intelligent manager offers easy-to-use wizards for provisioning end-to-end pseudowires. These powerful wizards include configurable templates to help optimize and prevent costly configuration mistakes, as well as a function to automate re-parenting cell sites to a new Radio Network Controller (RNC).

### Graphical Pseudowire View

The Graphical Pseudowire View displays the resources used by each pseudowire, including RSVP-TE tunnels, IP/MPLS links and network resource status information, which enables faster and simplified troubleshooting.

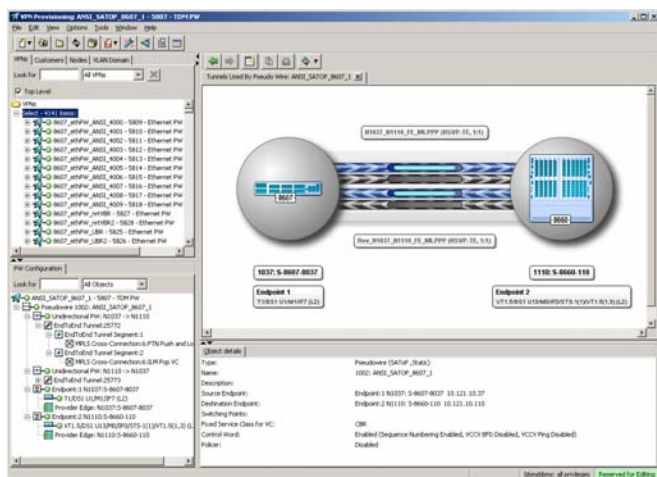


Figure 2. Graphical Pseudowire View

### Optical Power Diagnostics Tool

The Optical Power Diagnostics Tool characterizes optical networks, diagnoses problems, and manages baseline and threshold power settings on per wavelength basis. This tool helps quickly identify span loss issues in the optical network.

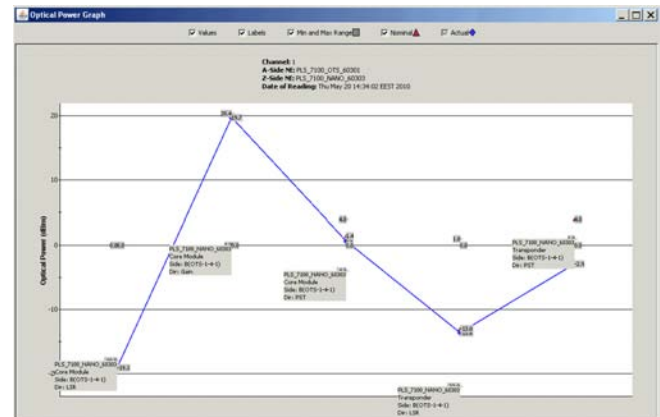


Figure 3. Optical Power Diagnostics Tool

### Cell Site Wizard

The Tellabs 8000 intelligent manager provides an easy-to-use cell site wizard to automate the provisioning of cell site nodes and the pseudowire connections between the Node B and RNC.

### Micro-Topology Tool

The Micro-Topology Tool provides deep graphical troubleshooting across multiple layers, enabling much faster and efficient troubleshooting.

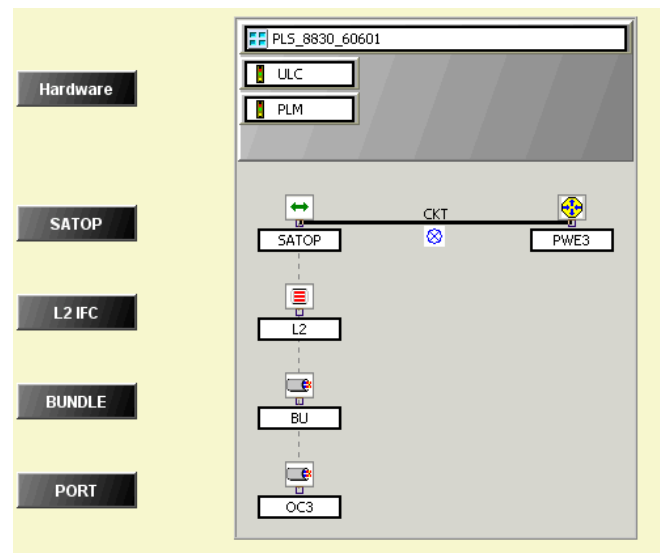


Figure 4. Micro-Topology Tool

### Service Fault Monitoring

Service Fault Monitoring enables real-time monitoring of end-to-end services like pseudowires and IP/VPNs as well as PDH and SDH circuits.

### Web Reporter Tool

The Web Reporter Tool provides statistics from the network in the form of predefined HTML reports. The reports include information on faults, configuration and capacity in an easy-to-read format.

### Performance Management Tools

The Performance Management Tools monitor and report the performance data for the managed network. The performance data can be viewed on-line or as historical reports. It also includes trend analysis capabilities for interfaces and link utilization.

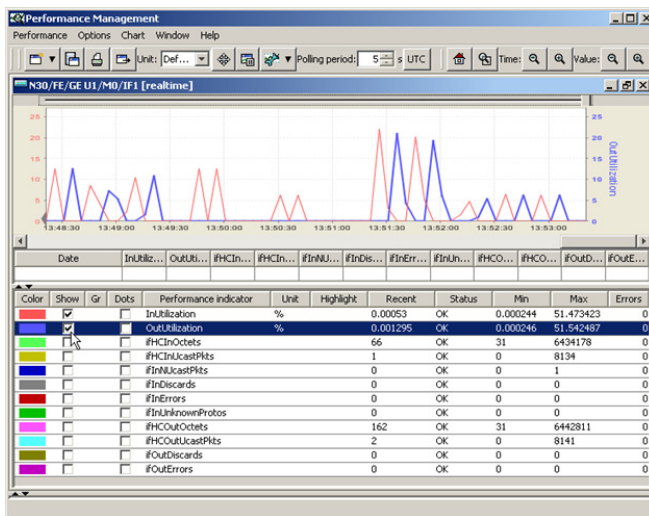


Figure 5. Performance Manager Tool

### Unit Software Management Tool

The Unit Software Management Tool provides reports on the installed software and hardware versions in the nodes and enables new software to be downloaded to a select set of nodes.

### OSS Integration

The Tellabs 8000 intelligent manager offers a wide variety of integration methods to common OSS.

It is easy to integrate additional or proprietary OSS with specifically designed northbound interfaces. Please contact Tellabs Professional Services for additional information on OSS integration.

### Flexible and Scalable Deployments

The Tellabs 8000 intelligent manager is highly configurable and is available in configuration to fit the various needs of different network operators.

From small networks to very large deployments, the Tellabs 8000 intelligent manager is designed to match the scalability requirements of your network and can support up to 30,000 nodes.

The Tellabs 8000 intelligent manager can also be configured as an EMS-focused solution with deep troubleshooting capabilities and strong OSS integration functionality.

### Third Party Hardware and Software

#### Operating System

- Windows Server 2003
- Windows Server 2008
- Windows XP
- Solaris

#### Supported Database

- Sybase
- Oracle

#### North America

Tellabs  
One Tellabs Center  
1415 West Diehl Road  
Naperville, IL 60563  
U.S.A.  
+1 630 798 8800  
Fax: +1 630 798 2000

#### Asia Pacific

Tellabs  
3 Anson Road  
#14-01 Springleaf Tower  
Singapore 079909  
Republic of Singapore  
+65 6215 6411  
Fax: +65 6215 6422

#### Europe, Middle East & Africa

Tellabs  
Abbey Place  
24-28 Easton Street  
High Wycombe, Bucks  
HP11 1NT  
United Kingdom  
+44 871 574 7000  
Fax: +44 871 574 7151

#### Latin America & Caribbean

Tellabs  
Rua James Joule No. 92  
EDIFÍCIO PLAZA I  
São Paulo – SP  
04576-080  
Brasil  
+55 11 3572 6200  
Fax: +55 11 3572 6225