

# BPS-250RD

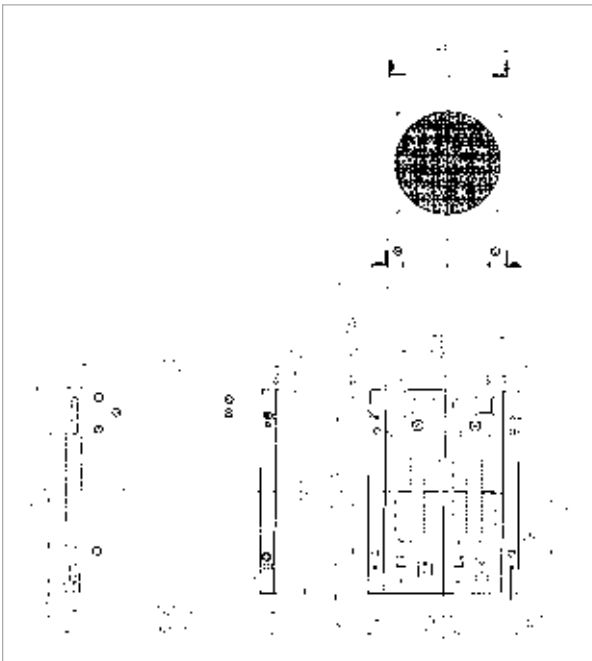
## 230W PS/2 Size Hot-Swap Redundant Power Supply



### FEATURES

- Designed for fault-tolerant applications
- The most compact design which conforms to PS/2 type power supply dimensions
- Minimum efficiency is 75%
- 10 to 50% operating temperature; 20 to 90% RH humidity
- 50,000 hrs at 25°C MTBF calculated by MIL217E
- Safety Standards meet UL, CSA, TUV, CE
- EMI Standards meet FCC Class B, VDE

### Mechanical Drawing



### INPUT CHARACTERISTICS

- **Input Voltage:** 95V~132V AC (115V) to 180V~264V AC (230V)
- **Input Frequency:** 47Hz to 63Hz
- **Input Current:** 6A for 115V AC

### OUTPUT CHARACTERISTICS

Model	Output Voltage	Load Current			Tolerance
		Min	Max	Total	
BPS-250RD	+5V	3A	30A	200W	±5%
	+12V	1A	14A		±5%
	+3.3V*	0A	20A		±5%
BPS-250RDX	-12V	0A	0.5A	10W	±10%
	-5V	0A	0.5A		±10%
	+5V <sub>SB</sub> *	0.1A	1A		3.5W

\*+3.3V & +5Vsb is for BPS-250RDX

### SPECIFICATION

- **Protection Type**
  - Over power: Shutdown all DC outputs when +5V and +12V outputs are overload to the limit 120%, under condition of 90/180V input
  - Over voltage: Latch off if the +5V or +12V maximum voltage exceeds the limit 5.8V±0.65V for +5V, 12.6~15.6V for +12V, under condition of all operating
  - Short circuit : A short circuit placed on any output shall cause no damage to this unit
- **Overshoot**
  - Any output overshoot at turn-on shall not exceed 10% of nominal voltage value
- **Hold Up Time**
  - Minimum 16ms

### ORDERING INFORMATION

Model	Description
BPS-250RD	230W PS/2 Size Hot-Swap Redundant Power Supply
BPS-250RDX	230W ATX Hot-Swap Redundant Power Supply