

d¹

design.

d²

develop.

d³

deploy.

Embedded Planet EP50120M



Features:

- **Processor:** Freescale MPC8248 and Zarlink ZL50120 CeSoP Processor
- **RAM:** Up to 128MB of SDRAM
- **Flash:** Up to 128MB
- **Ethernet:** 2 x 10/100 and 1 x 10/100/1000
- **T1/E1:** 4 T1/E1 to RJ45 connectors or via PMC connectors
- **Serial Ports:** Two RS-232 to front panel
- **I2C Devices:** Temperature Sensor, EEPROM
- **Power Supply:** 5V wall cube in stand-alone mode
- or via PMC connectors when in PMC mode.
- **Form Factor:** PrPMC with PT2MC support (PICMG 2.15, Configuration 2)
- **Debug:** JTAG/COP via an onboard connector
- **Software:** U-Boot bootloader and VxWorks BSP available now with Linux upon request

PowerPC CESoP PMC Card

The EP50120M is a PrPMC/PT2MC board featuring a PowerPC MPC8248 control processor and a Zarlink ZL50120 CESoP processor. The EP50120M board can operate as PMC module within CompactPCI system when or as a stand-alone module for software development and rapid prototype development. The board comes complete with a U-Boot bootloader and VxWorks Board Support Package to speed application development.

As a Circuit Emulation Service over Packet (CESoP) processing module the EP50120M is designed to allow telecommunication providers a simple and cost effective method for transitioning between legacy circuit switched networks and newer IP based networks. The board acts as the bridging of the two network types and allows operators the chance to safely and effectively migrate their legacy circuit switched networks.

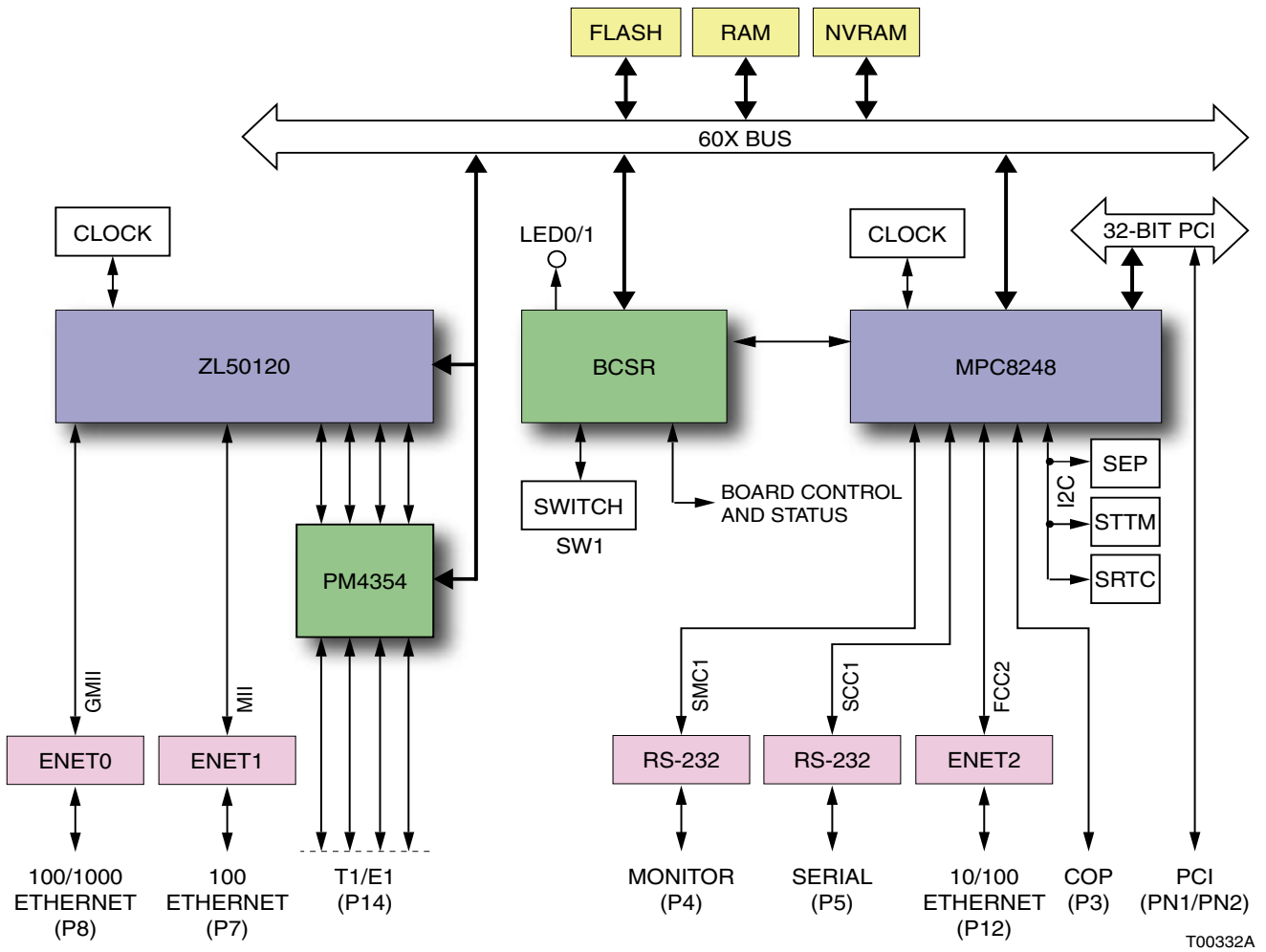
The EP50120M uses a Freescale MPC8248 as the control processor and the Zarlink ZL50120 for CESoP processing. The ZL50120 is capable of supporting both structured and unstructured TDM data. It includes a 10/100 customer side Ethernet port that can be used to aggregate data traffic with voice traffic and then back hauled using the 10/100/1000 provider side port.

design.
The next
generation of
connected devices.

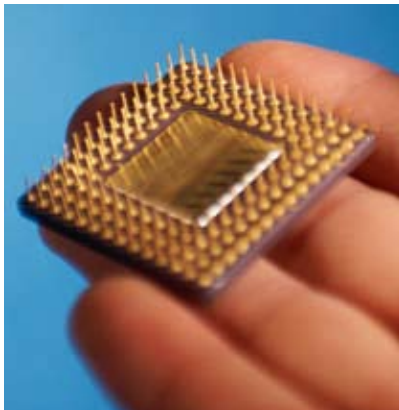
develop.
Your products
based on our
platform.

deploy.
Your solution
faster.

Block Diagram



Let Us Do The Heavy Lifting



- Embedded Planet offers a complete set of software and hardware training and customization services to go along with our Off-the-Shelf solutions.
- Our training classes in Linux and Eclipse can help your engineering team shrink their time-to-productivity and help ensure higher quality products.
- Our custom diagnostics tools, Eclipse applications, U-Boot porting, Linux, Green Hills INTEGRITY, and VxWorks BSPs and applications can extend your engineering team and shrink your time to market.
- Contact Embedded Planet to find out how our Professional Services Division can accelerate your project.

This material is the copyright of Embedded Planet 1997-2007. Embedded Planet is a registered Trademark. Other company and product names may be trademarks of their respective owners. Product specifications subject to change without notice.

Contact Embedded Planet sales:
www.embeddedplanet.com
 or email info@embeddedplanet.com
 phone (216) 245-4180