

### Features

- Marvell® PXA270 Processor
- Onboard 128 MB SDRAM
- 10/100Base-TX Ethernet
- VGA/ TTL LCD
- 2CH AC97 Audio
- Onboard 128 MB SanDisk® mDOC
- CompactFlash™, SDIO
- COM Port x 2, USB1.1 Host x 4, USB1.1 Client x 1
- Windows® CE 5.0/ Linux
- +9V to +24V DC Input

### Specifications

System	
Form Factor	3.5"
Processor	Marvell® PXA270 520 MHz Processor
System Memory	Onboard 128 MB SDRAM
Ethernet	Davicom® DM9000AEP, 10/100Base-TX, RJ-45 x 1
Boot Loader	Microsoft® Windows® CE or Linux
Watchdog Timer	Generates a time-out system reset, setting via software
Expansion Interface	SDIO, Type 2 CompactFlash™
OS Support	Windows® CE 5.0/ Linux
Power Requirement	+9V ~ +24V DC
Power Consumption (Typical)	520 MHz, 128 MB SDRAM +12V @ 0.29A
Operating Temperature	32°F ~ 158°F (0°C ~ 70°C)
Board Size	5.75" (L) x 4" (W) (146 mm x 101.6 mm)
Gross Weight	0.88 lb (0.4 Kg)
Storage Temperature	-40°F ~ 176°F (-40°C ~ 80°C)
Operating Humidity	0% ~ 90% relative humidity, non-condensing
MTBF (Hours)	100,000
Display	
Chipset	PXA270
Resolutions	Up to 640 x 480@16bpp colors
LCD Interface	TTL TFT LCD
I/O	
Storage	SanDisk® mDOC 128 MB, EIDE x 1
Serial Port	RS-232 x 1, RS-232/485 x 1
USB	USB1.1 host x 4, USB1.1 client x 1
Digital I/O	Supports 10-bit (Programmable)
Audio	Line-out, Stereo Amplifier included
Touch Screen	Supports 4-wire resistive touchscreen



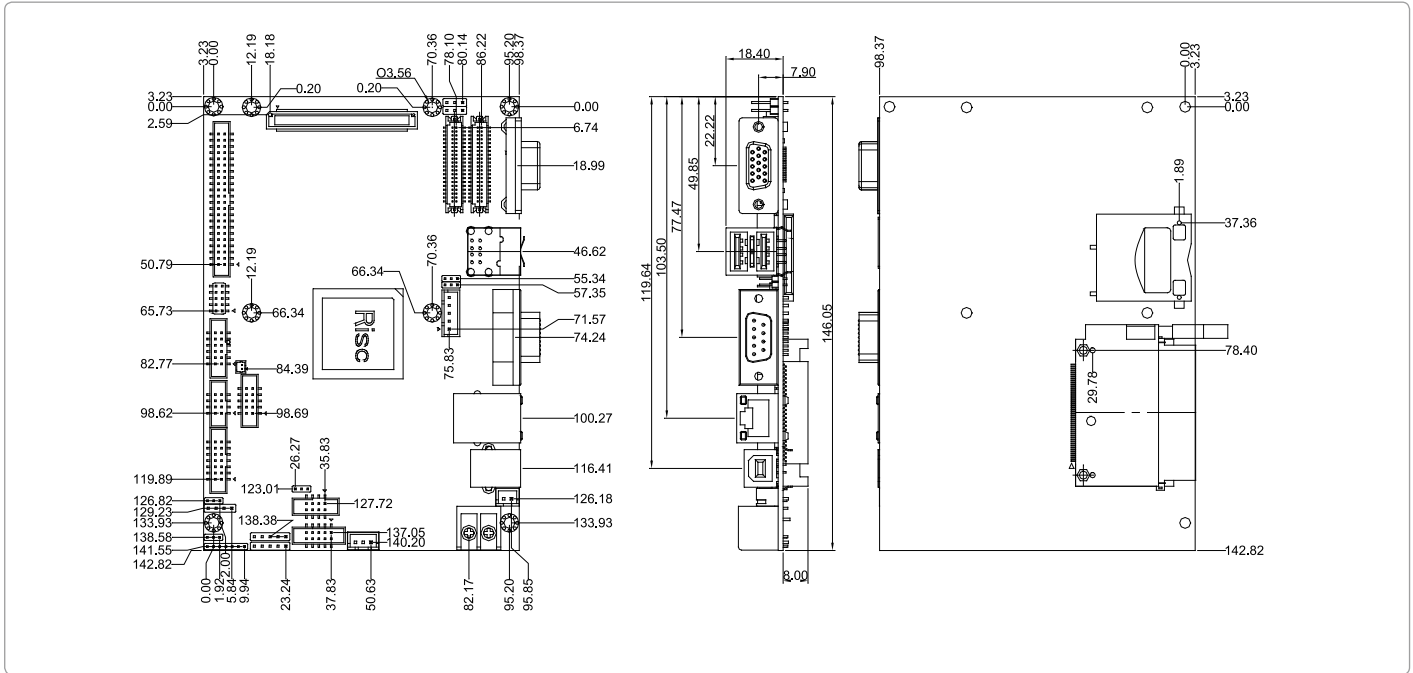
### Packing List

- Product CD
- GENE-1270

# GENE-1270

## Dimension

Unit: mm



## Ordering Information

Part Number	CPU	Memory	Storage	OS	Display	LVDS	LAN	USB2.0	COM	Touch	Expansion Slot	Power	Temp
TF-GENE-1270-B10	Marvell® PXA270 520 MHz	128MB	128MB	WinCE5.0	TTL, LVDS, CRT	18-bit Single Channel	FE x 1	USB1.1 Host x 4, USB1.1 Client x 1	RS-232 x 1 RS-232/422/485 x 1	4-wire resistive	Proprietary Expansion slot x 1 CompactFlash™ Type 1/2 x 1 SDIO x 1	9V-24V	0°C ~ 70°C
TF-GENE-1270-B10-02	Marvell® PXA270 520 MHz	128MB	128MB	Linux	TTL, LVDS, CRT	18-bit Single Channel	FE x 1	USB1.1 Host x 4, USB1.1 Client x 1	RS-232 x 1 RS-232/422/485 x 1	4-wire resistive	Proprietary Expansion slot x 1 CompactFlash™ Type 1/2 x 1 SDIO x 1	9V-24V	0°C ~ 70°C

## Optional Accessories

- AP-LN968666660**  
 SDIO, 802.11 b/g, Wireless LAN Card (For TF-GENE-1270-B10)
- TF-PER-P09D-A10**  
 Power over Ethernet Module, +12V DC output