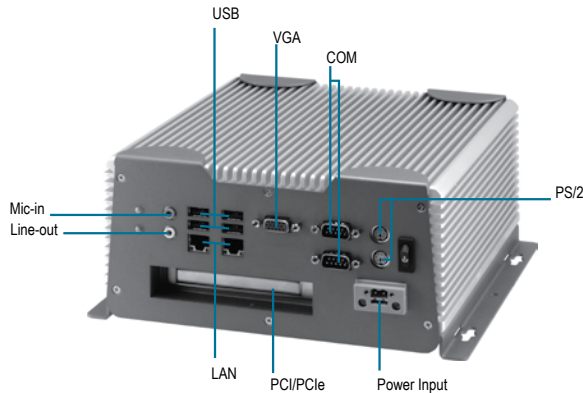
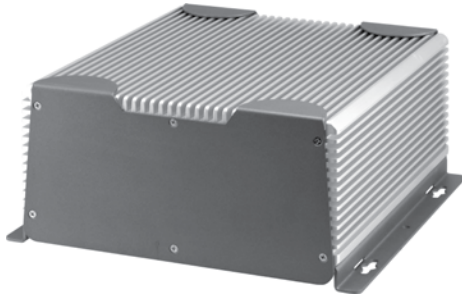


AEC-6872

Mini Fanless Embedded Controller With Intel® Atom™ D510 Processor



Features

- Fanless Design
- Intel® Atom™ D510 Processor
- PCI-Express [x1] Slot x 1 Or PCI Slot x 1
- Wide DC Power Input
- Gigabit Ethernet x 2, RJ-45 x 2
- COM x 10
- ATX Power Function



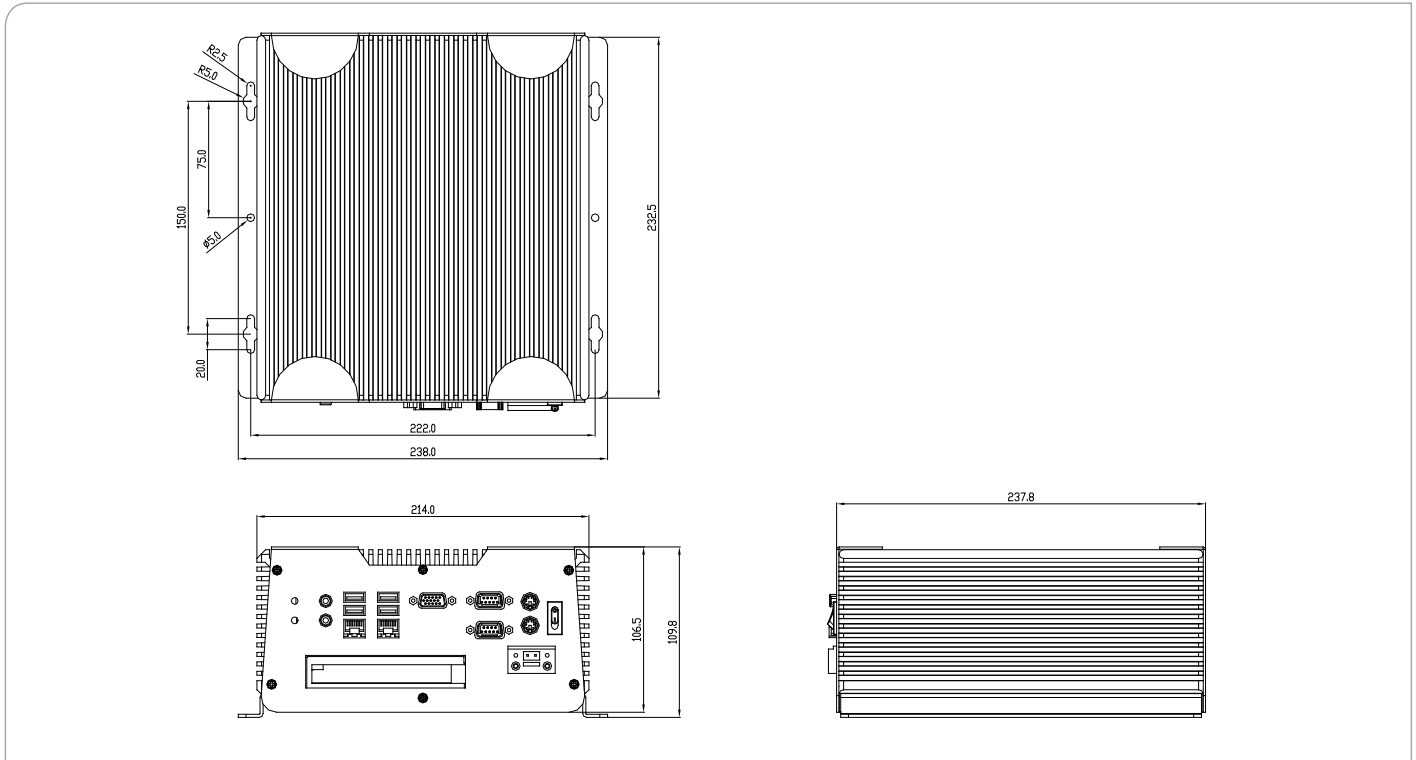
Specifications

CPU	Intel® Atom™ D510 1.6GHz	
Chipset	Intel® ICH8M	
System Memory	200-pin DDR2 SODIMM x 2, Max. 4GB	
Display Interface	VGA	DB-15 x 1, shared system memory up to 384MB/ DVMT 4.0
	DVI	—
	Others	—
Storage Device	SSD	Type 2 CompactFlash™ Slot x 1 (Inside)
	HDD	SATA 1.5Gb/s HDD bay x 1
Network	LAN	Gigabit Ethernet
	Wireless	—
Front I/O	USB Host	—
	LAN	—
	Serial Port	RS-232 x 8
	DIO	—
	Audio	—
	KB/MS	—
	Others	—
Rear I/O	USB Host	USB2.0 x 4
	LAN	RJ-45 x 2
	Serial Port	RS-232 x 1, RS-232/422/485 x 1
	DIO	—
	Audio	Line-out x 1, Mic-in x 1
Expansion	KB/MS	1
	Others	DB-15 x 1, Power button x 1, Power inlet x 1, SYS LED x 1, HDD LED x 1
	PCIe [x1]	1 (Version A)
	PCI	1 (Version B)
	Mini Card	1
Indicator	Mini PCI	1
	Others	—
	Front	System LED x 1, HDD LED x 1
	Rear	—
Power Requirement	DC 9-30V	
Power Consumption	—	
System Cooling	Passive Cooling	
Mounting	Wallmount	
Operating Temperature	Ambient with Airflow	
	14°F ~ 131°F (-10°C ~ 55°C) (W/, WT CFD) 14°F ~ 122°F (-10°C ~ 50°C) (W/ N270, WT HDD)	
Storage Temperature	-4°F ~ 158°F (-20°C ~ 70°C)	
Anti-Vibration	5 g rms / 5 ~ 500Hz / operation – CFD, 1 g rms / 5 ~ 500Hz / operation – HDD	
Anti-Shock	50 G peak acceleration (11 msec. duration) – CFD	
MTBF	—	
Certification	EMC	CE/FCC class A
	Safety	—
Dimension (W x H x D)	8.4"(W) x 3.7"(H) x 9.4"(D) (214mm x 94.8mm x 237.8mm)	
Gross Weight	12.76 lb (5.8 Kg)	

AEC-6872

Dimension

Unit: mm



Ordering Information

- **TF-AEC-6872-A1-1010**
Embedded Controller, Intel® Atom™ D510, 1 PCI-Express [x1], DC9-30V/ATX, 10 C, 4 U, VGA, 2 LAN
- **TF-AEC-6872-B1-1010**
Embedded Controller, Intel® Atom™ D510, 1 PCI, DC9-30V/ATX, 10 C, 4 U, VGA, 2 LAN