



## General Specifications

### Motor Protection:

Auto Restart/Polarity Protection

### Insulation Resistance:

10M Ω or over with a DC500V Megger

### Dielectric Withstand Voltage: AC 700V 1s

### Allowable Ambient Temperature Range:

-10°C ~ +70°C (Operating)

-40°C ~ +70°C (Storage)

(non-condensing environment)

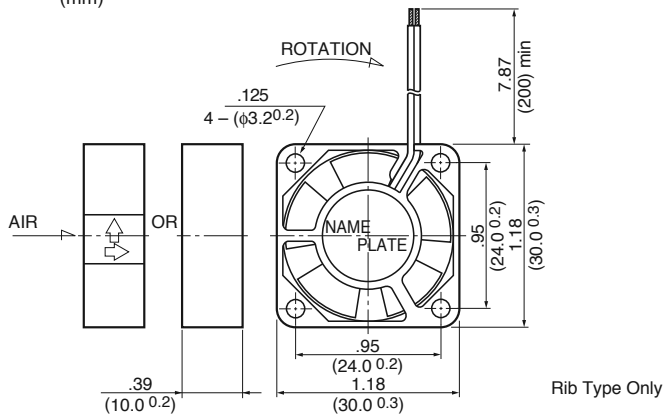
## Expected Life

### Failure Rate: 10%

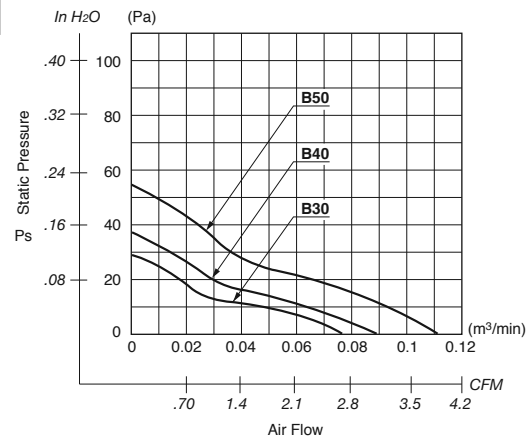
25°C 50,000 Hours (B00)

## Outline

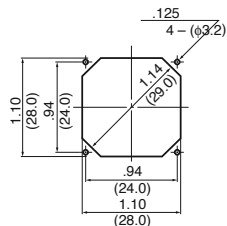
Units:  $\frac{\text{inch}}{\text{mm}}$



## Characteristic Curves



## Panel Cut-outs



INLET SIDE / OUTLET SIDE

## Material

Casing : Plastic (Black) 94V-0

Impeller : Plastic (Black) 94V-0

Bearing : Ball Bearing

Lead Wire: UL1061, AWG26, +Red, -Black

## Specifications

MODEL	Product No.	Rated Voltage	Operating Voltage	Current	Input Power	Speed	Max. Air Flow		Max. Static Pressure		Noise	Mass
		(V)	(V)	(A) <sup>*1</sup>	(W) <sup>*1</sup>	(min <sup>-1</sup> ) <sup>*1</sup>	CFM <sup>*1</sup>	(m <sup>3</sup> /min) <sup>*1</sup>	in H <sub>2</sub> O	(Pa) <sup>*1</sup>	(dB) <sup>*1</sup>	(g)
1204KL-01W-B30-	X00	5	4.5 ~ 5.5	0.10	0.50	7500	2.7	0.078	.116	29.0	21.0	8.5
1204KL-01W-B40-	X00	5	4.5 ~ 5.5	0.14	0.70	9000	3.2	0.091	.148	37.0	23.0	8.5
1204KL-01W-B50-	X00	5	4.5 ~ 5.5	0.18	0.90	10500	3.8	0.110	.216	54.0	27.0	8.5
1204KL-04W-B30-	X00	12	6 ~ 13.8	0.06	0.72	7500	2.7	0.078	.116	29.0	21.0	8.5
1204KL-04W-B40-	X00	12	6 ~ 13.8	0.07	0.84	9000	3.2	0.091	.148	37.0	23.0	8.5
1204KL-04W-B50-	X00	12	6 ~ 13.8	0.08	0.96	10500	3.8	0.110	.216	54.0	27.0	8.5

Rotation: Clockwise

Airflow Outlet: Air Out Over Struts

\*1: Average Values in Free Air