

Phase Control

PHS Series

AC Phase Control



- External Adjustment - 230 V AC Rated Potentiometer
- 120 or 230 V AC Input Voltages Available
- Up to 20 A Steady State - 200 A Inrush
- Single Hole Surface Mounting

Approvals:

Accessories

Female quick connect
 P/Ns:
P1015-13 (AWG 10/12)
P1015-64 (AWG 14/16)
P1015-14 (AWG 18/22)

Quick connect to screw adaptor
 P/N: **P1015-18**

Versa-knob
 P/N: **P0700-7**

See accessory pages for specifications.

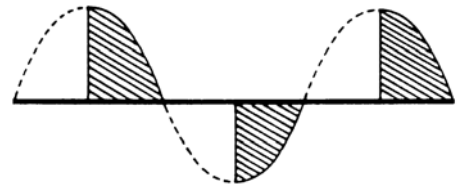
Description

The PHS Series is an ideal method of changing lamp intensity, varying the speed of a fan/motor, or controlling the temperature of a heater. The effective output voltage is adjusted with an accessory external potentiometer suitable for line voltage applications.

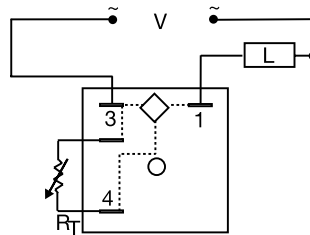
Operation

Upon application of input voltage, effective output voltage can be varied by changing the external resistance value. As the external resistance increases, the effective output voltage decreases. The inverse is also true.

Typical Output Waveform



Connection



Triac Output Device

V = Voltage L = Load R_T = External Adjustment
 Dashed lines are internal connections.

Available Models-

- | | | |
|------------|------------|------------|
| PHS120A1 | •PHS120A10 | •PHS120A20 |
| •PHS120A6 | PHS230A1 | •PHS230A10 |
| •PHS230A20 | PHS230A6 | |

Don't see what you need? Call us for a minimum quantity and price quote!

Ordering Table

<u>PHS</u>	<u>X</u>	<u>X</u>
Series	Input	Rating
	-120A - 120 V AC	- 1 A
	-230A - 230 V AC	- 6 A
		-10 A
		-20 A

Example P/N: **PHS120A10, PHS230A6**

