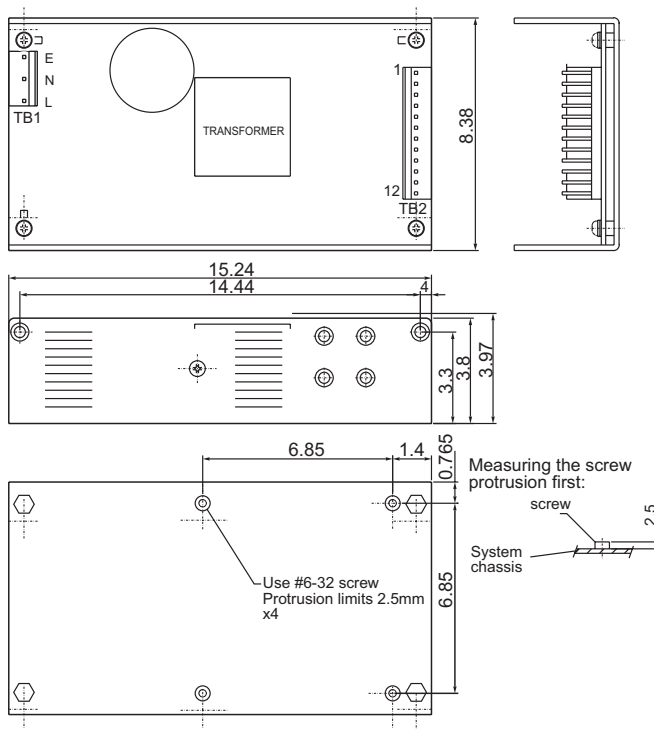


Power Supply

MPI-8080

80W AC-DC Open Frame Power Supply
Output 100W with Fan Required



★ Specifications

- * **Input Voltage:** 85~264VAC
- * **Input Frequency:** 47~63Hz
- * **Input Current:** 3A at 115VAC or 1.5A at 230VAC max. capacitors
- * **Inrush Current:** Does not exceed 30A at 115VAC input or 60A at 230VAC input, cold start at 25°C
- * **Load Regulation:** With +5V output set between 4.95~5.05V and all output at 60% rated load, and all other outputs in the accuracy range, max. load can not > 80W convection cooling and > 100W forced air cooling
- * **Ripple And Noise:** Peak to peak ripple and noise for each output is < 1% of each output voltage at rated load
- * **Line Regulation:** < +/-1% at rated load with +/-10% change in input voltage
- * **Load Regulation:** < +/-1% for +5V, < +/-5% for other outputs with +/-40% change in measured output loading from 60% rated load and other outputs at 60% rated load
- * **Hold Up Time:** > 16ms at 115VAC input and rated load
- * **Efficiency:** > 70% at nominal line and rated load
- * **Altitude:** 10,000 feet
- * **Protection:**
Short Circuit: Hiccup mode against short circuit or over load conditions auto recovery to normal after wrong conditions are removed
Output: Built-in crowbar circuit shuts down outputs to avoid damage. Trip point of over voltage protection is between 5.7~7.0V AC line ON/OFF restarts and recovers the unit from over voltage protection
- * **Temperature:** 0~50°C, requires forced air of 30CFM for outputs > 80W (operating); -20~+70°C (storage)
- * **Humidity:** 5~95%; non-condensing at 40°C (operating)
- * **Dimensions:** 15.24 x 8.38 x 3.8 cm within +/-0.4mm tolerance
- * **MTBF:** 283,179 hrs.

Pin	Input	Pin	Output
1	AC Line-1	1~3	+5V
2	AC Line-2	4~7	GND
3	GND	8~9	+12V
		10	-12V
		11	-5V
		12	N/C

Output	Min. Load	Rated Load	Max. Load	Tolerance
+5V	1A	6A	10A	+/-0.05V
+12V	0A	3.5A	6A	+/-0.75V
-12V	0A	0.5A	1A	+/-0.75V
+5V	0A	0.5A	1A	+/-0.25V

Safety Standards

- * **Safety:** UL 1950, CSA 22.2 No.234, VDE EN 60 950
- * **EMI:** FCC Class B, EN55022B
- * **EMS:** Level 3 of IEC-801, 802, 803, 804

The Industrial PC Authority



BOSER Technology Co., Ltd.

15F-6, No. 77, Hsin Tai Wu Road, Sec. 1, Hsichih, Taipei Hsien 221 Taiwan TEL : 886-2-26983333 FAX : 886-2-26983300
<http://www.boser.com.tw> <http://www.isb.com.tw> <http://www.ipc.com.tw> E-Mail: webmaster@boser.com.tw

U.S.A. TEL : +1 650 4280868 FAX : +1 650 4281172	U.K. TEL : +44 1543 466552 FAX : +44 1543 466553	KOREA TEL : +82 2 34737862 FAX : +82 2 34743120	FRANCE TEL : +33 1 69061790 FAX : +33 1 69433732	SHANGHAI TEL : 021 63676295-7 FAX : 021 63676286
GERMANY TEL : +49 221 954790 FAX : +49 221 9547988	ITALY TEL : +39 051 452042 FAX : +39 051 455046	ISRAEL TEL : +972 3 9203456 FAX : +972 3 9203535	FINLAND TEL : +358 2 6203753 FAX : +358 2 6203770	