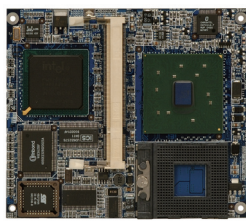


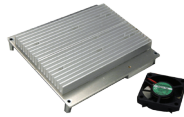
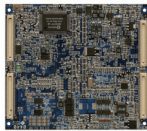
# IEM-PM *Pentium® M Highly Integrated ETX Module*

# IEM-LX *AMD LX800 Highly Integrated ETX Module*



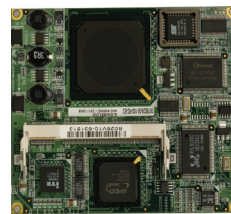
ETX CPU Module with Intel® Pentium® M / Celeron® M CPU, USB 2.0, LAN & Audio

### Solder Side



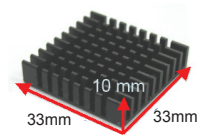
Heatsink/CPU cooler for various applications

**FSB 400** **DDR266**



ETX CPU Module with AMD® LX800 CPU on-board, USB 2.0, LAN & Audio

### Solder Side



**DDR400**



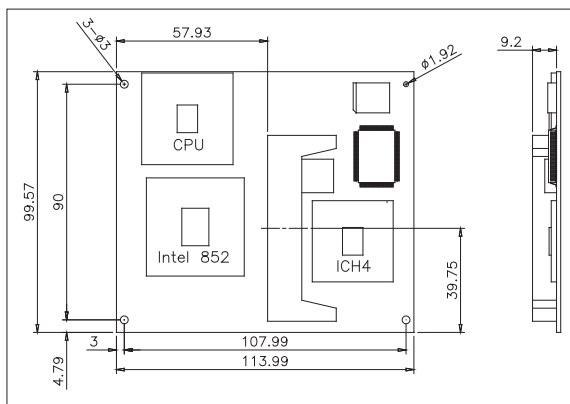
## Specifications

- ◆ **CPU**  
Intel® Celeron® M 600MHz (IEM-PM-600E)
- ◆ **System Chipset**  
Intel® 852GM + ICH4
- ◆ **BIOS**  
AMI BIOS
- ◆ **System Memory**  
1 x SO-DIMM 266MHz SDRAM up to 1GB
- ◆ **Ethernet**  
10/100Mbps Intel® 82562ET Ethernet chipset
- ◆ **I/O Interface**  
2 x IDE  
1 x LPT/FDD  
2 x RS-232  
4 x USB 2.0  
1 x PS/2
- ◆ **Expansions**  
4 x PCI bus master  
ISA support by Winbond W83629G / W83628G
- ◆ **Audio**  
AC'97 CODEC
- ◆ **Super I/O**  
W83627HG
- ◆ **Display Interface**  
VGA integrated in Intel® 852GM  
18-bit dual channel LVDS
- ◆ **Watchdog Timer**  
Software programmable supports 1-255 sec. system reset
- ◆ **Power Supply**  
AT/ATX support
- ◆ **Power Consumption**  
5V@3.8A  
(Celeron® M 1.5G, DDR266/256MB RAM)
- ◆ **Temperature**  
Operation: 0°C ~ 60°C (32 ~ 140° F)
- ◆ **Humidity**  
Operation: 5% ~ 95%, non-condensing
- ◆ **Dimensions**  
99.57 mm x 114 mm
- ◆ **Weight**  
GW: 650g; NW: 250g

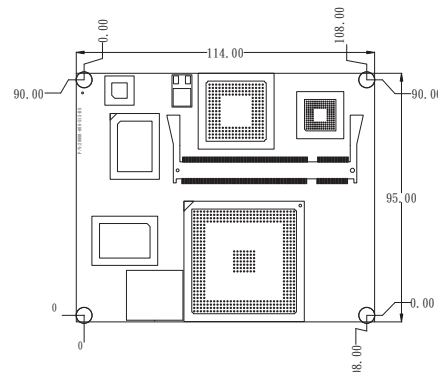
## Specifications

- ◆ **CPU**  
AMD® LX800 processor
- ◆ **System Chipset**  
AMD® LX800 + AMD® CS5536
- ◆ **BIOS**  
Award BIOS
- ◆ **System Memory**  
1 x 200-pin DDR 400/333MHz SO-DIMM SDRAM up to 1GB
- ◆ **Ethernet**  
10/100Mbps RTL8100C Ethernet chipset
- ◆ **I/O Interface**  
4 x USB 2.0  
1 x LPT  
1 x CF Type II  
1 x IDE  
2 x RS-232  
1 x PS/2 KB/MS
- ◆ **Expansions**  
4 x PCI bus master  
ISA support by IT8888G
- ◆ **Audio**  
AC'97 Codec Realtek ALC203
- ◆ **Super I/O**  
W83627EHG
- ◆ **Display Interface**  
VGA integrated in AMD® LX800  
24-bit TTL  
18-bit single channel LVDS
- ◆ **Watchdog Timer**  
Software programmable supports 1-255 sec. system reset
- ◆ **Power Supply**  
AT/ATX support
- ◆ **Power Consumption**  
5V@0.92A (AMD LX-800 CPU with DDR 333MHz 256MB RAM)
- ◆ **Temperature**  
Operation: 0°C ~ 60°C (32 ~ 140° F)
- ◆ **Humidity**  
Operation: 5% ~ 95%, non-condensing
- ◆ **Dimensions**  
95 mm x 114 mm
- ◆ **Weight**  
GW: 650g; NW: 250g

## Dimensions



## Dimensions



## Packing List

- 1 x IEM-PM single board computer
- 1 x CF-IEM-02 Hetsink (IEM-600E)
- 1 x Utility CD
- 1 x QIG (quick installation guide)

## Packing List

- 1 x IEM-LX single board computer
- 1 x Mini jumper pack
- 1 x Utility CD
- 1 x QIG (quick installation guide)

## Ordering Information

Part No.	Description
IEM-PM-600E-R10	ULV Intel Celeron® M 600 MHz ETX CPU Module with LAN function

## Ordering Information

Part No.	Description
IEM-LX-800-R10	AMD LX800 500MHz processor, VGA/LVDS/TTL, LAN & Audio
IEM-LX-CE060	WindowsCE 6.0 Image & BSP S/W CD, Licensed Sticker (w/o CPU board)
IEM-LX-CE050	WindowsCE 5.0 Image & BSP S/W CD, Licensed Sticker (w/o CPU board)
IEM-LX-XPE	WindowsXP Embedded Image & SLD S/W CD, Licensed Sticker (w/o CPU board)

1  
Single Board Computer

2  
VIDEO CARD

3  
Xscale Solutions

4  
Open HMI

5  
VITO Universal Controller

6  
DINO BLADE

7  
LCD Product Series

8  
Embedded System

9  
Industrial Computer Chassis

10  
Power Supply

11  
Peripherals