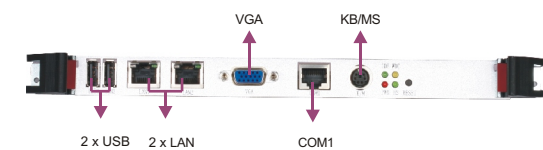
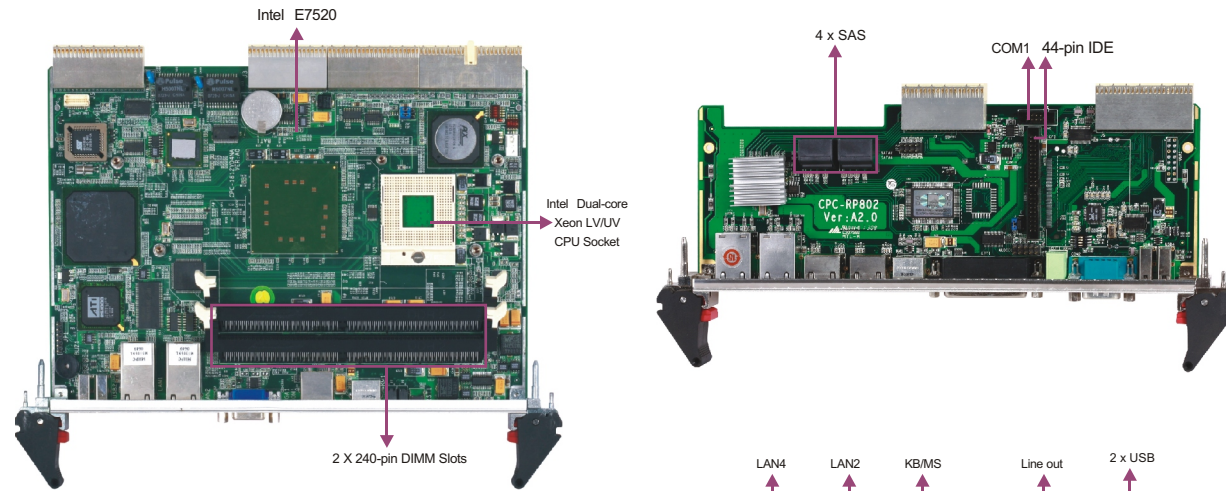


# CPC-1812VD4NA

Intel® Xeon® Dual-Core CompactPCI Boards with VGA/4GbE/Audio



## Features

- Supports Intel® Xeon® Dual-Core LV processor
- Supports 2 x 240-pin DIMMs, up to 4GB of DDR2 400 RECC memory
- Supports 4 x SAS storage interface (in rear I/O board), supporting RAID 0,1,10
- Supports 4 x Intel® Gigabit Ethernet Interface via PCI-E x4 bus
- Supports VGA+LVDS dual simultaneous display
- PICMG 2.16 Packet Switching specification compliant
- PICMG 2.5 R1.0 H.110 CompactPCI Computer Telephony Specification compliant
- PICMG 2.1 R2.0 Hot Swap specification compliant
- PICMG 2.0 R3.0 CompactPCI specification compliant
- Selectable 6U Rear I/O board: CPC-RP802

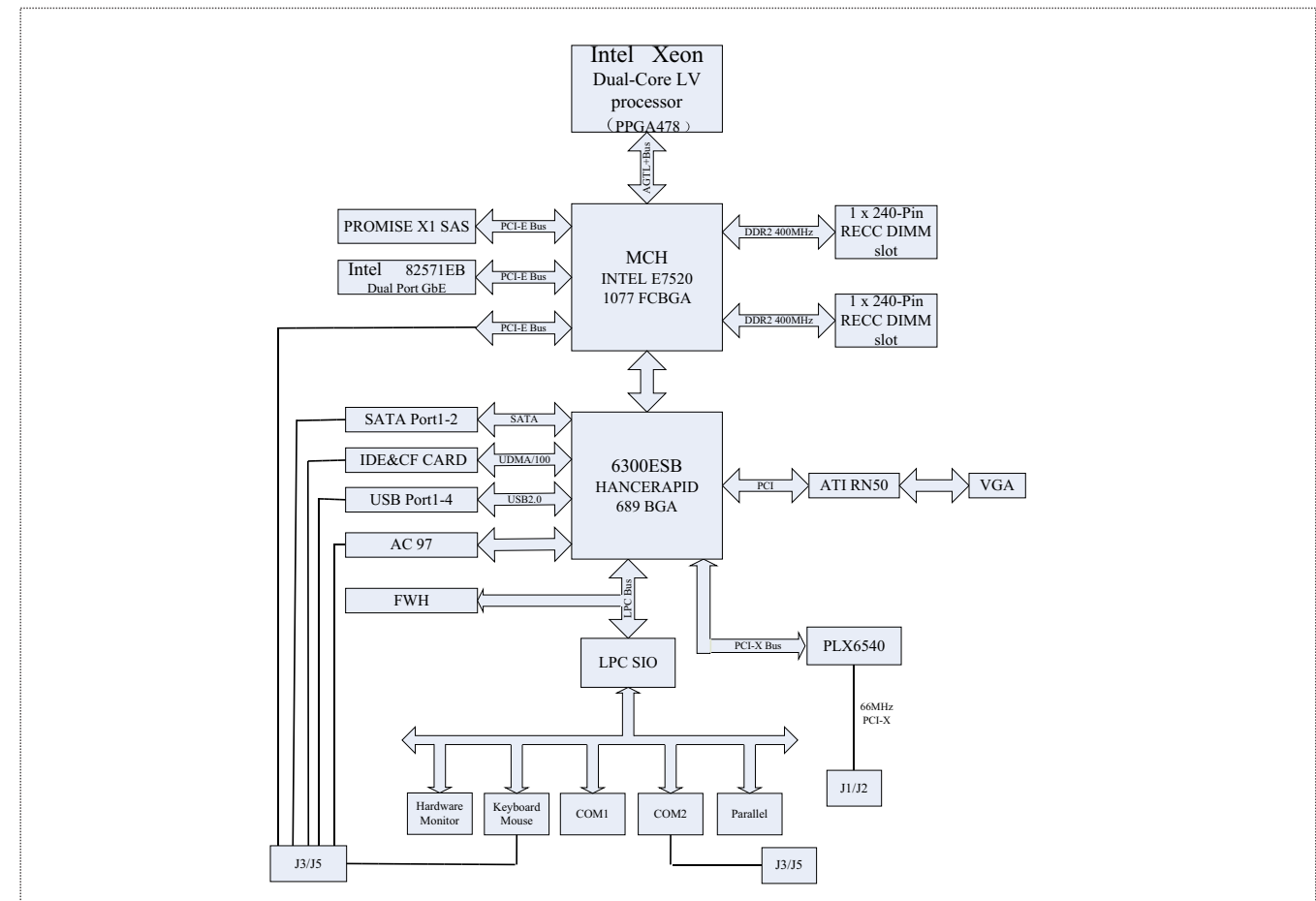


## Specifications

System		
Processor	Supports Intel® Xeon® Dual-Core LV 1.66GHz or 2.0GHz processor, with 667MHz FSB	
Chipset	Intel® E7520+6300ESB	
Memory	Supports 2 x 240-pin DIMMs, up to 4GB of DDR2 400 RECC memory	
Hardware Monitor	Monitors system status, voltage, temperature and fan speed etc.	
Watchdog Timer	1~255 sec./min. timer system reset or interrupt, setup by software	
Standard	PICMG2.0 R3.0, PICMG2.1 R2.0, PICMG2.5(R1.0 H.110), PICMG2.11 R1.0, PICMG2.16, IPVMI 1.5	
Storage Interface		
	<b>CPC-1812VD4NA</b>	<b>CPC-RP802</b>
SAS/SATA	N/A	4 x SAS interface, compatible with SATA hard disk, supporting RAID 0,1,10
IDE	N/A	1 x 44-pin Ultra ATA100/66 interface
CF	N/A	1 x CompactFlash socket
I/O Interface		
USB	2 x USB2.0 port	2 x USB2.0 port
Serial Port	1 x RS232(RJ45 port)	1 x RS232 (DB9 port)
PMC	N/A	N/A
Display Port	1 x VGA(DB9)	1 x VGA, 1 x LVDS
Audio	N/A	Onboard 1 x Realtek ALC655 Audio chip(Line-out)
KB/MS	1 x PS/2(KB/MS) port	N/A
Ethernet		
Chipset	2 x Intel® 82571EB Dual-Port Gigabit Ethernet Controller	1 x Intel® 82571EB Dual-Port Gigabit Ethernet Controller
Connector	2 x RJ45 Giga port	4 x RJ45 Giga port(2 x RJ45 port from system board)

Display	
Chipset	Onboard ATI ES1000 RN50 graphics controller
Memory	Onboard 16MB independent video memory
Resolution	VGA mode up to 1280x1024 @85Hz
	Supports 12-bit/18-bit or dual 12-bit LVDS display interface
Dual Display	Supports CRT+LVDS dual display
Mechanical and Environmental	
Dimensions	CPC-1812VD4NA: 233mm(6U) x 161.51mm x 4HP(1-slot width) CPC-RP802: 233.35mm(6U) x 81.5mm x 4HP(1-slot width)
Operating Temperature	-5°C~60°C
Storage Temperature	-20°C~75°C
Operating Humidity	5%-95%, non-condensing
Power	
Power Supply	Supports CPCI and ATX power supply
Power Consumption	Typical 113W(CPU: Intel® Xeon® Dual-Core LV 2.00GHz, Memory: 2GB DDR2 RECC400)
Operating System	
Windows OS	Windows XP/Windows 2003
Embedded OS	Linux

## Board Diagram



## Available Accessories

Part Number	Name	Description	Qty.
N/A	Setup Guide/RoHS	AMI/BIOS Setup Guide (for CORE/B)	1
N/A	User's Manual/RoHS	CPC-1812VD4NA	1
N/A	Driver CD/Protective film/RoHS	CPC-1812VD4NA	1
2330-000011	Jumper/RoHS	2.0mm pitch	4
2360-005031	Y-cable for KB/MS/RoHS	One mini-DIN port to two PS/2 ports, length: 250mm/RoHS	1
1030-100110	Motherboard (with cooler)	CPC-1812VD4NA	1

## Related Product

Item	Typical Recommendation
Intel® Xeon® Series	Intel® Xeon® Dual-Core Processor LV 1.66/2.00 GHz, 2M Cache, 667 MHz FSB
CPCI Chassis	CPC-8202, CPC-8203, CPC-8402, CPC-8403, CPC-8404
Rear I/O Board	CPC-RP802

## Ordering Information

Part Number	Model Number	Description
0030-003140	CPC-1812VD4NA	Motherboard
0030-007580	CPC-1812VD4NA/Conformal coating	Motherboard
0060-001110	CPC-RP802	Rear I/O Board
0060-002280	CPC-RP802/Conformal coating	Rear I/O Board